

Schlumberger

COMPANY: Lamont-Doherty Earth Observatory

WELL: ODP Leg 209, Site 1272A

FIELD: Mid Atlantic Ridge

Ocean: Atlantic

COUNTRY: USA

Date Processed: Date Logged: 11-Jun-2003

Job Number: Processed at:

Well Location: Rig- Joides Resolution

Latitude: 6.7365 N Longitude: 91.9343 W

Elevations: KB: 11.3m DF: 11m GL: -2571m

FOLD HERE The well name, location and borehole reference data were furnished by the customer.

All interpretations are opinions based on inferences from electrical or other measurements and we cannot, and do not guarantee the accuracy or correctness of any interpretation, and we shall not, except in the case of gross or willful negligence on our part, be liable or responsible for any loss, costs, damages or expenses incurred or sustained by anyone resulting from any interpretations made by any of our officers, agents or employees. These interpretations are also subject to Clause 4 of our General Terms and Conditions as set out in our current Price Schedule.

C2 .

8 in 18

C1

FMS\_DSI\_013LUP FMS4 .DYNA [C1165610]  
Horizontal Scale: 1 : 10.341  
Orientation North

FMS\_DSI\_013LUP FMS4 .STAT [C1165668]  
Horizontal Scale: 1 : 10.341  
Orientation North

8 (in 18)

MD  
1 : 20  
m

0 120 240 360

Resistive FMS4 Image Conductive

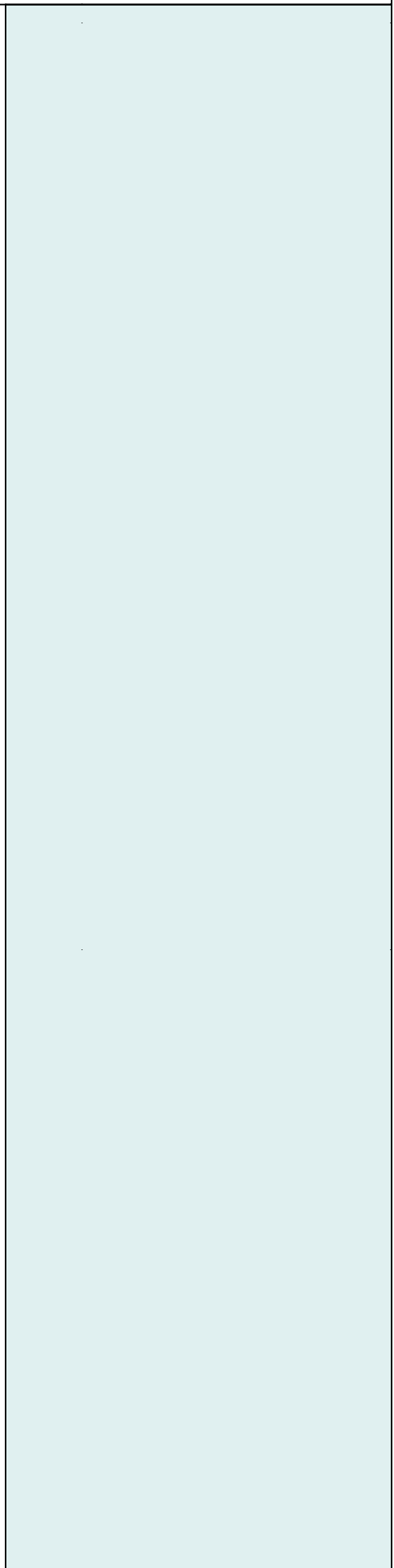
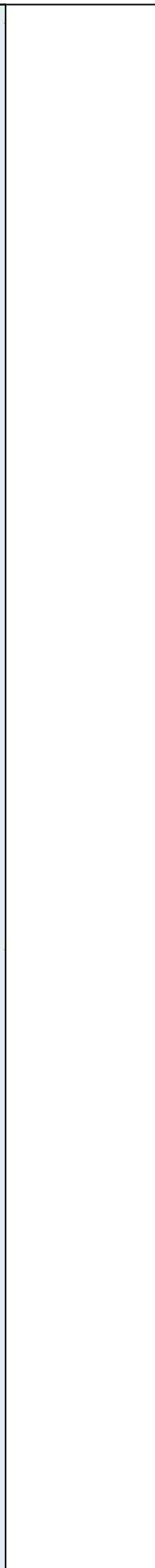
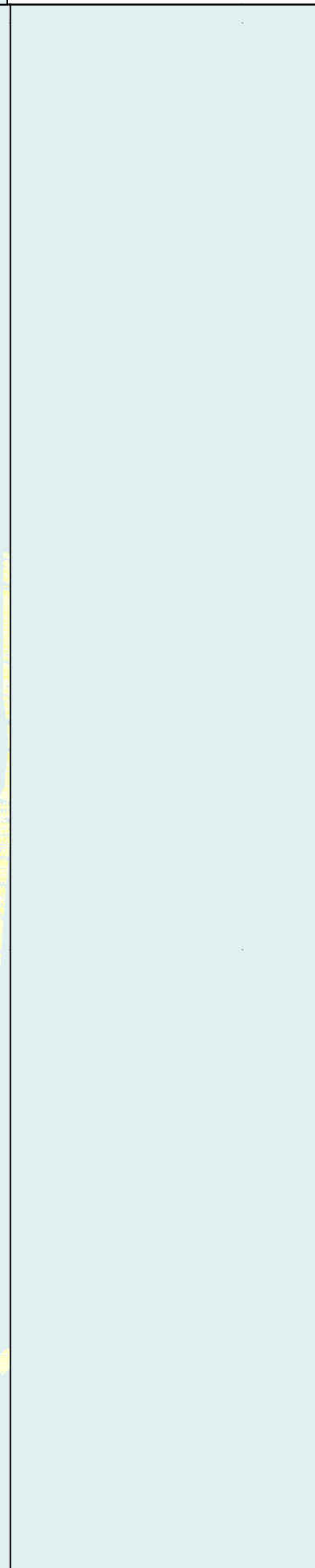


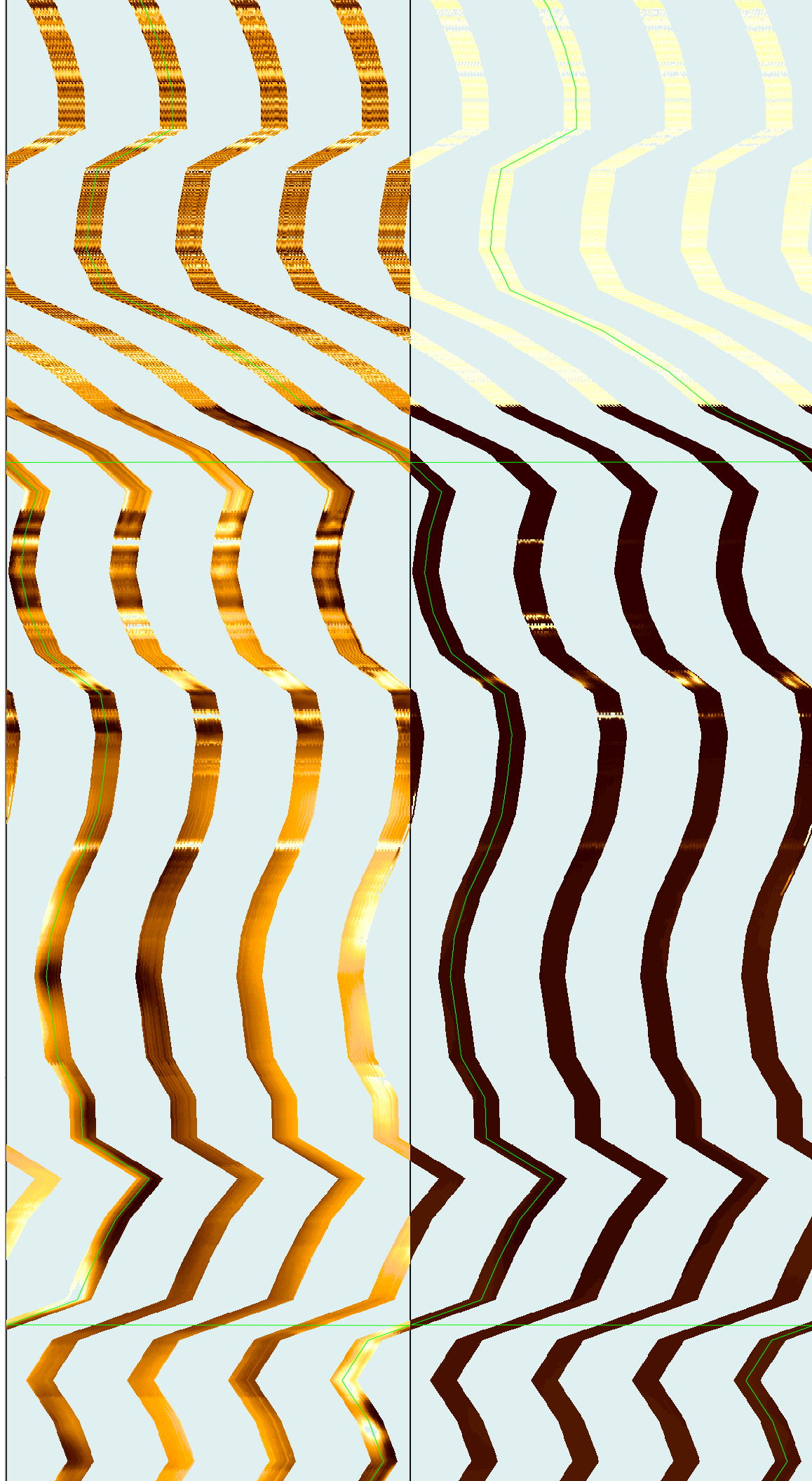
0 120 240 360

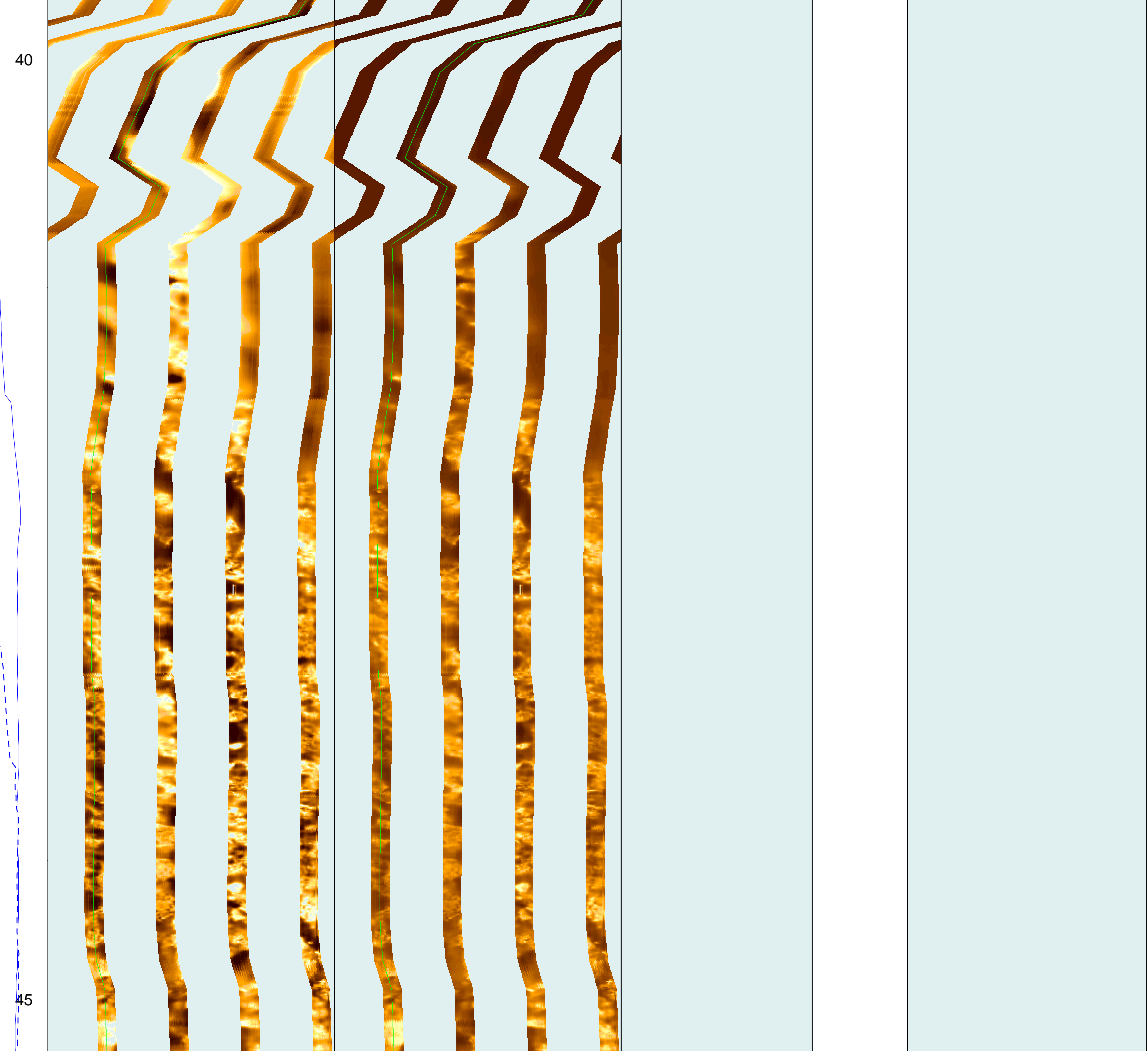
Resistive FMS4 Image Conductive

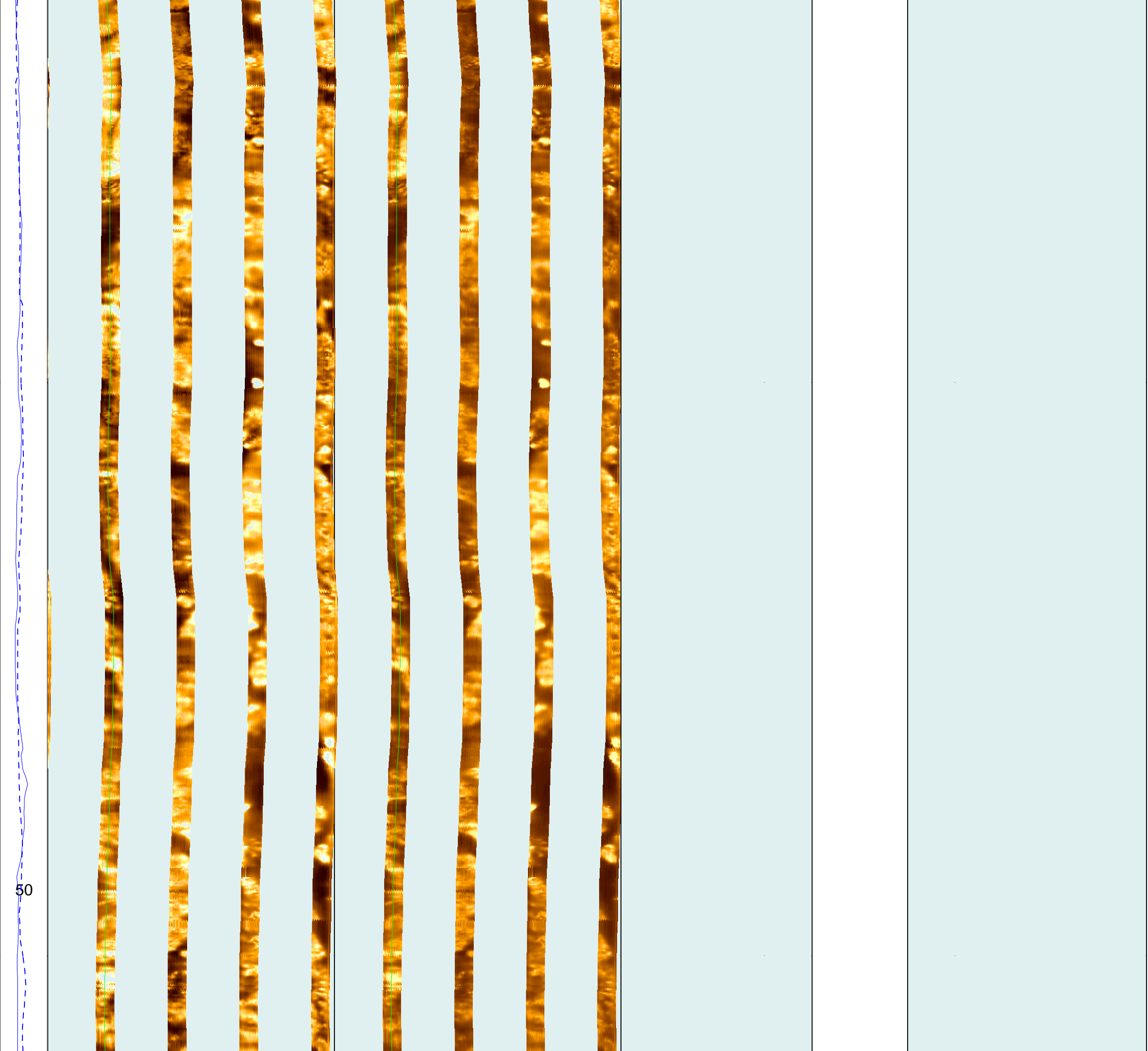


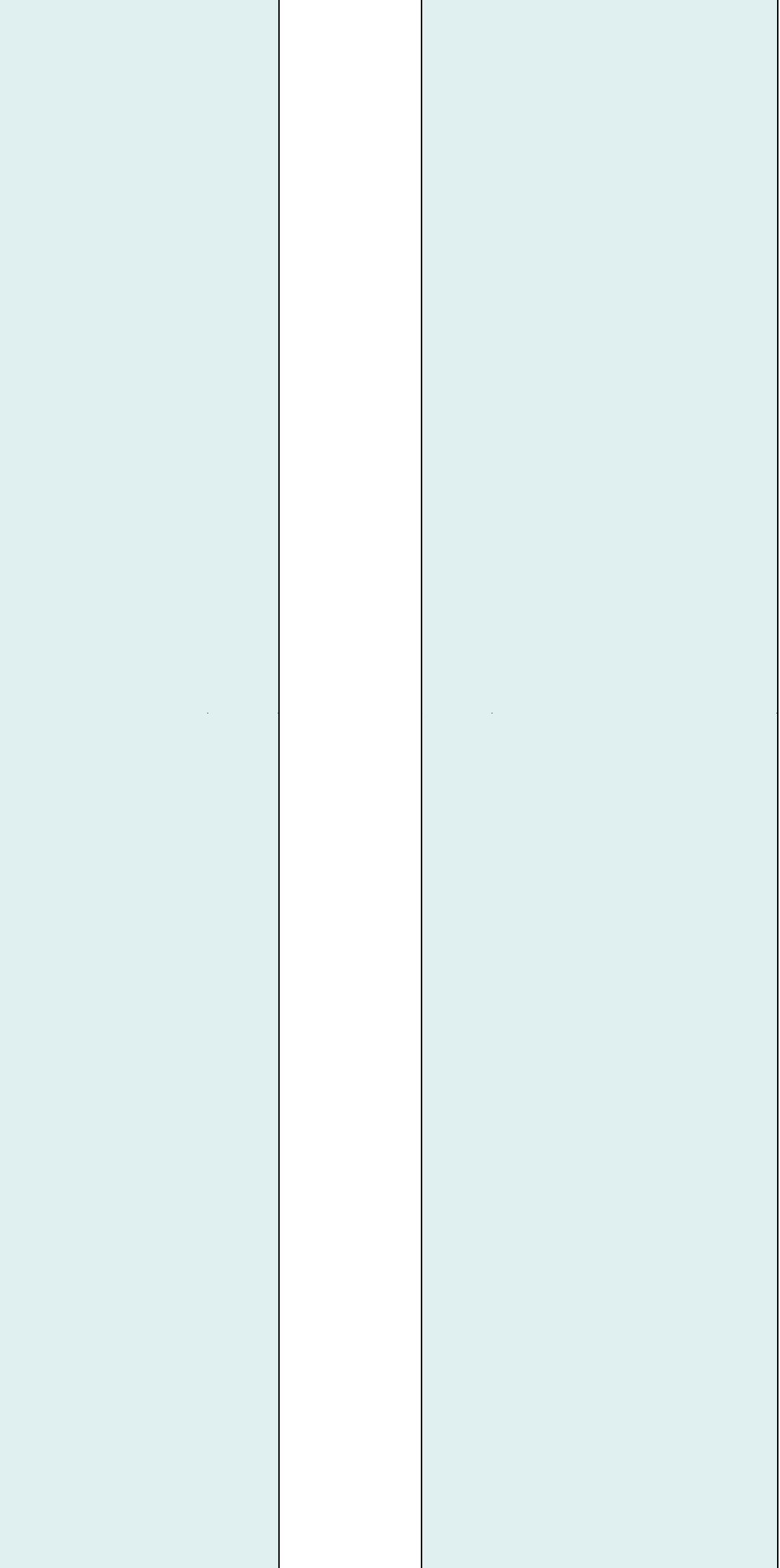
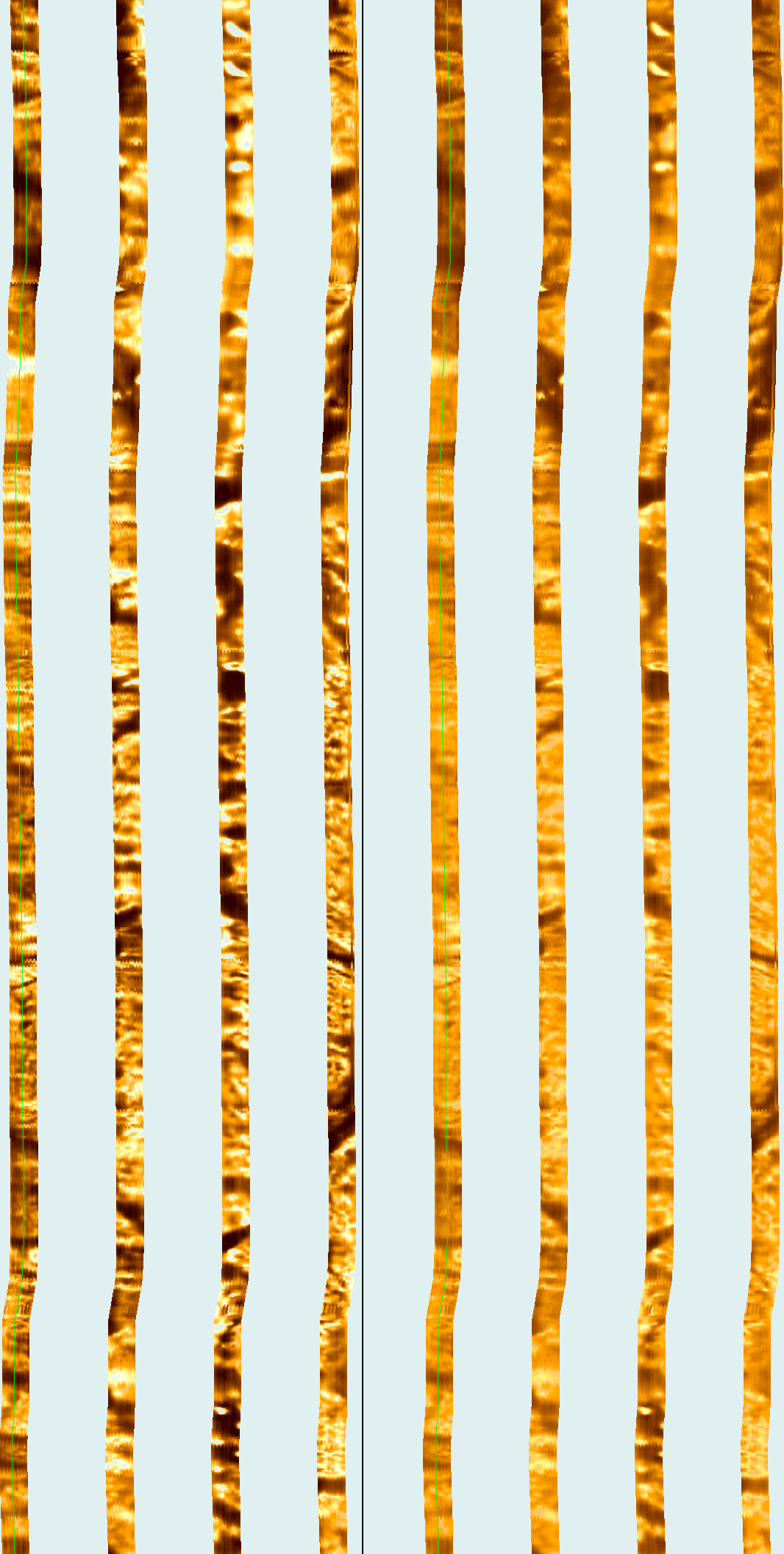
30

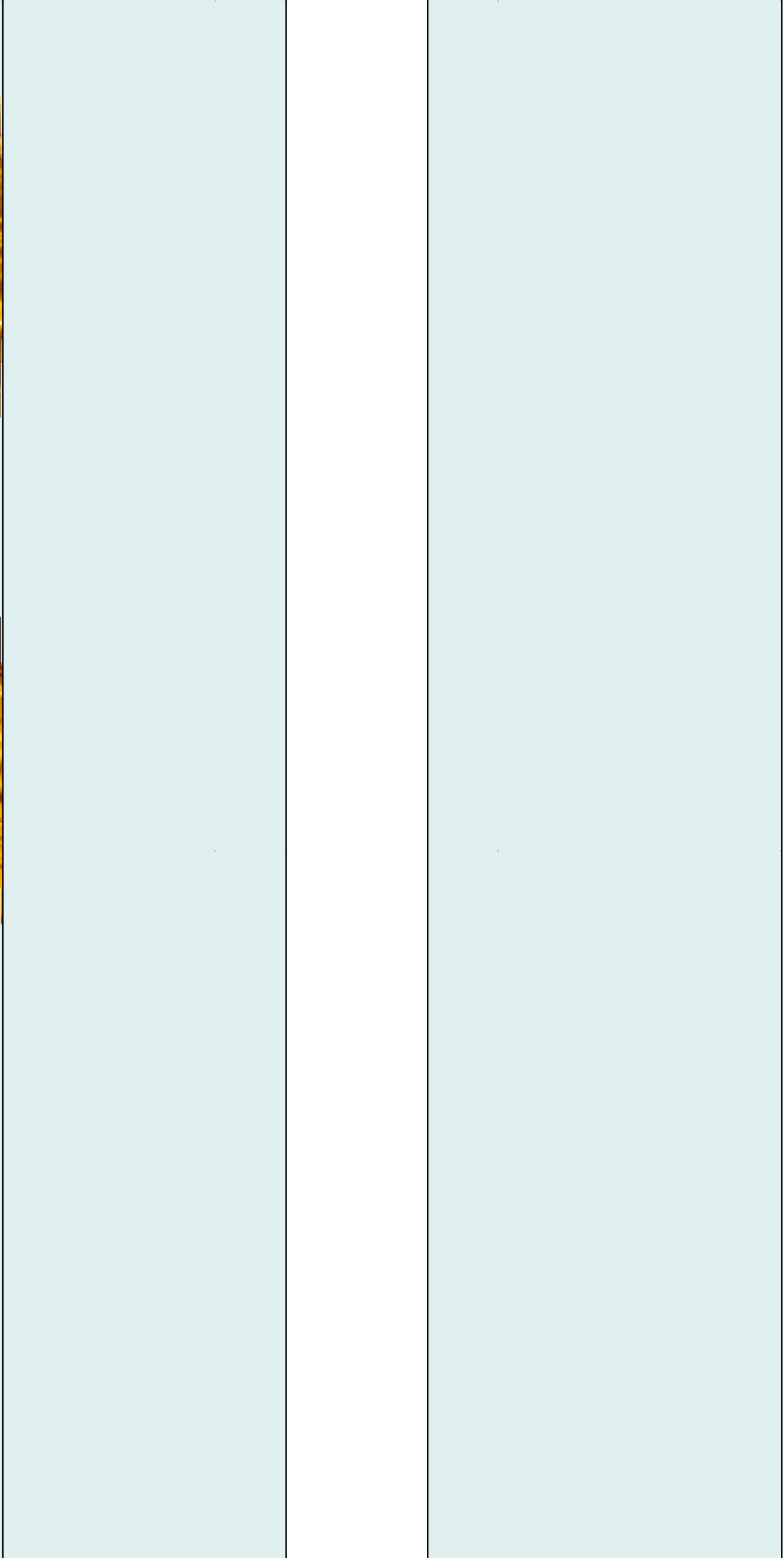


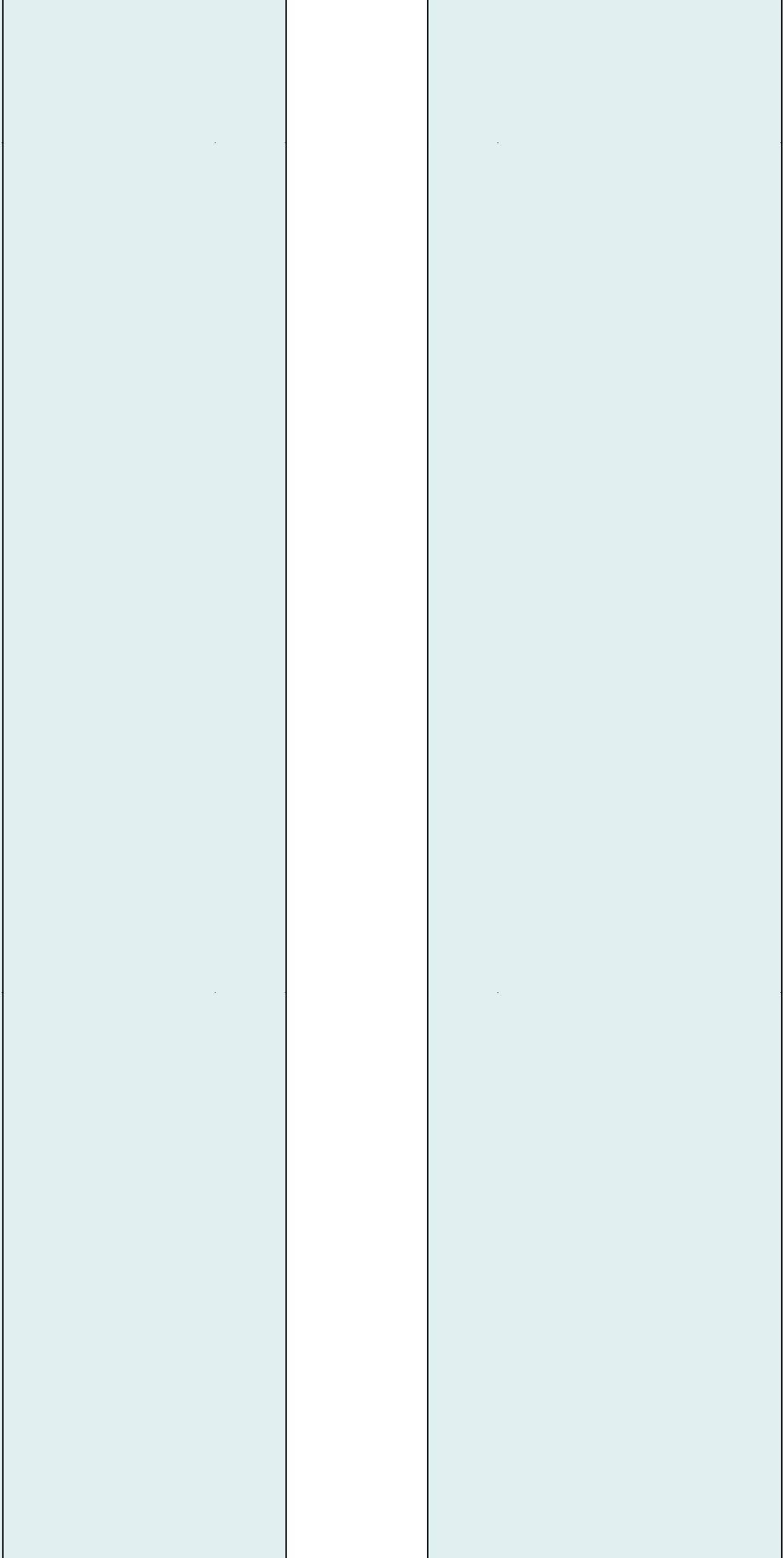




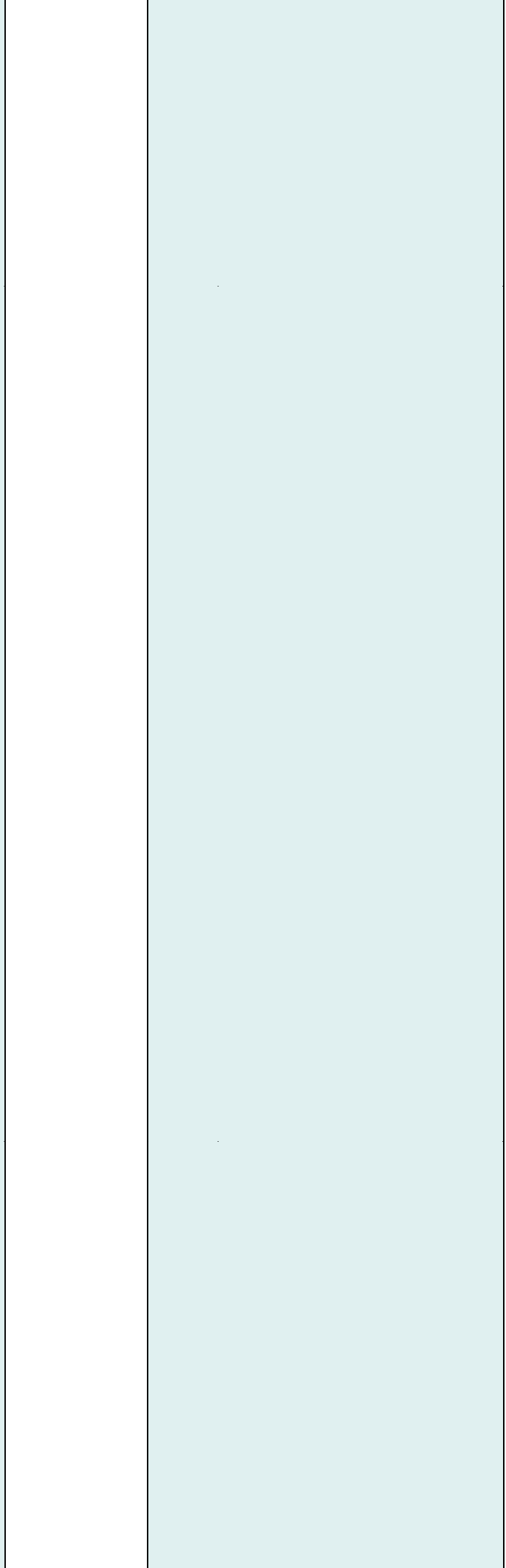
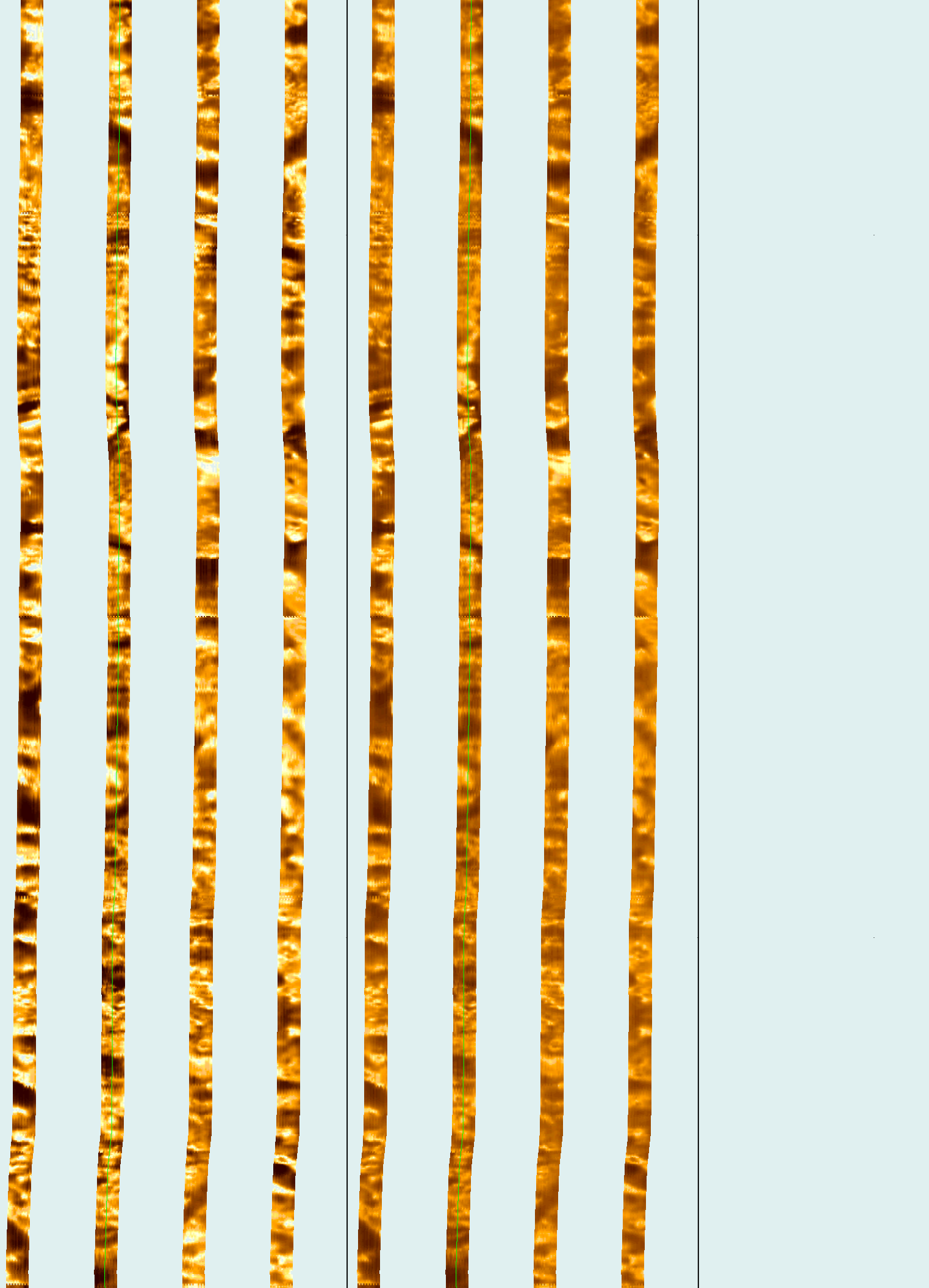


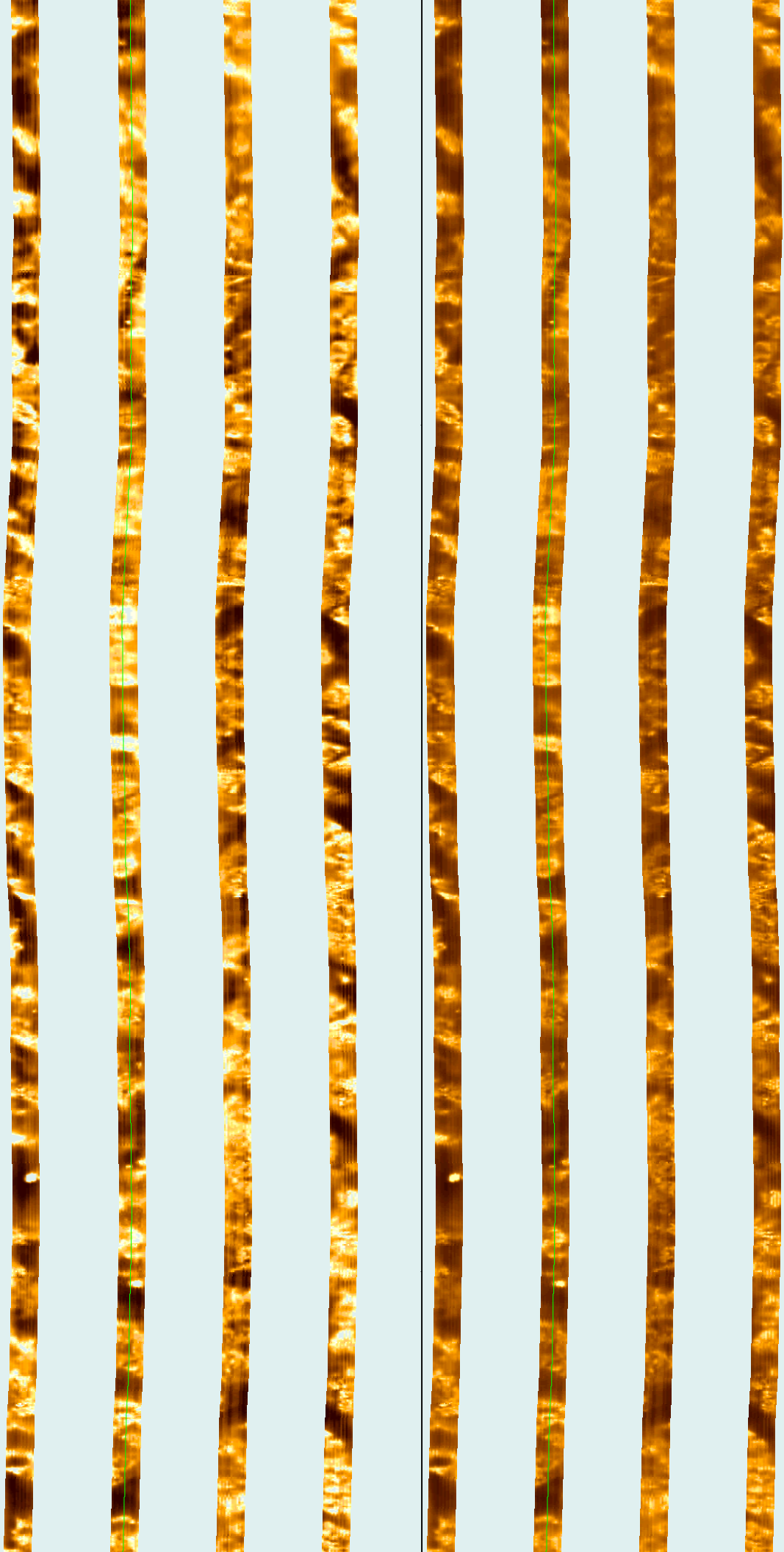


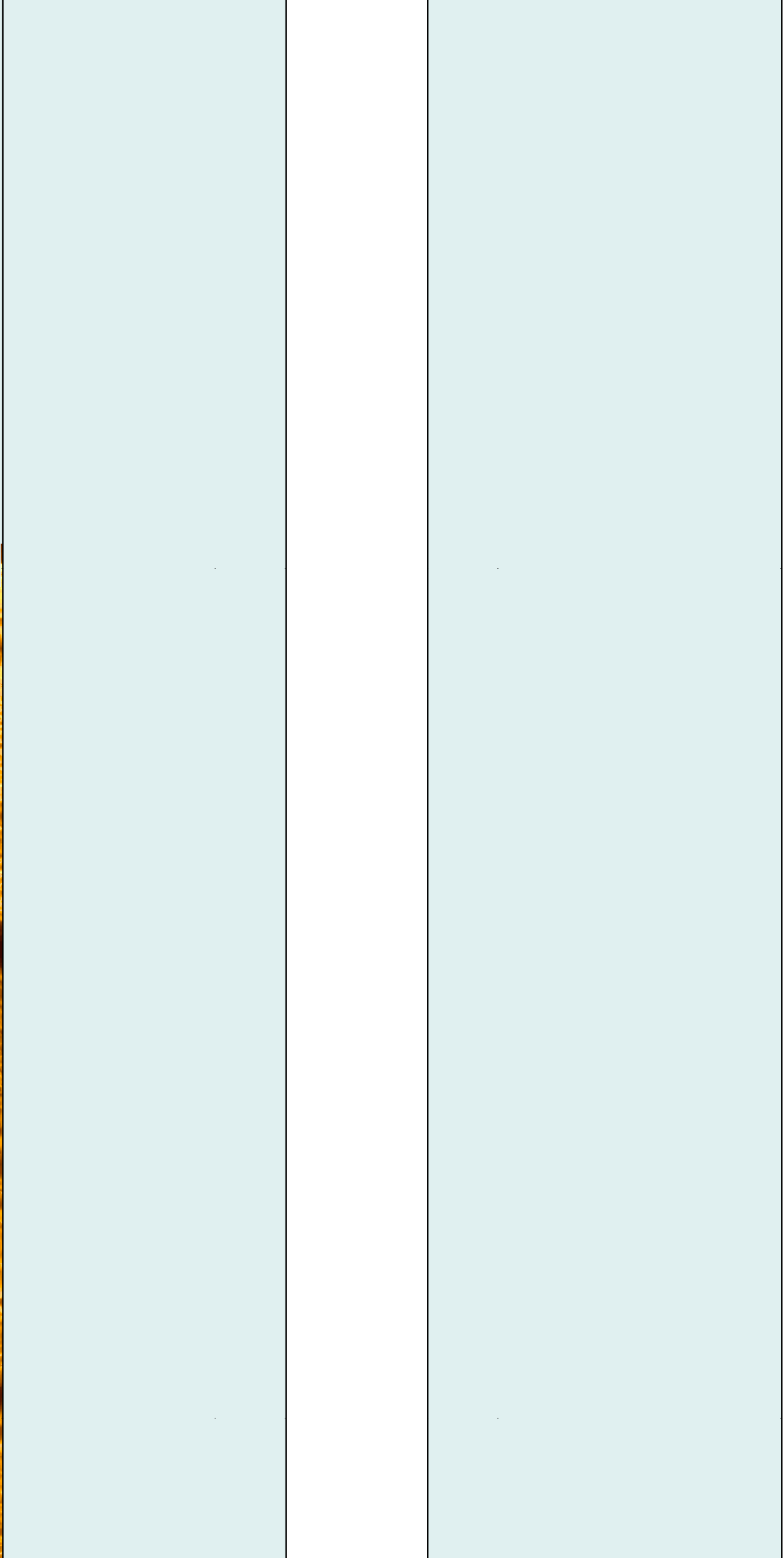
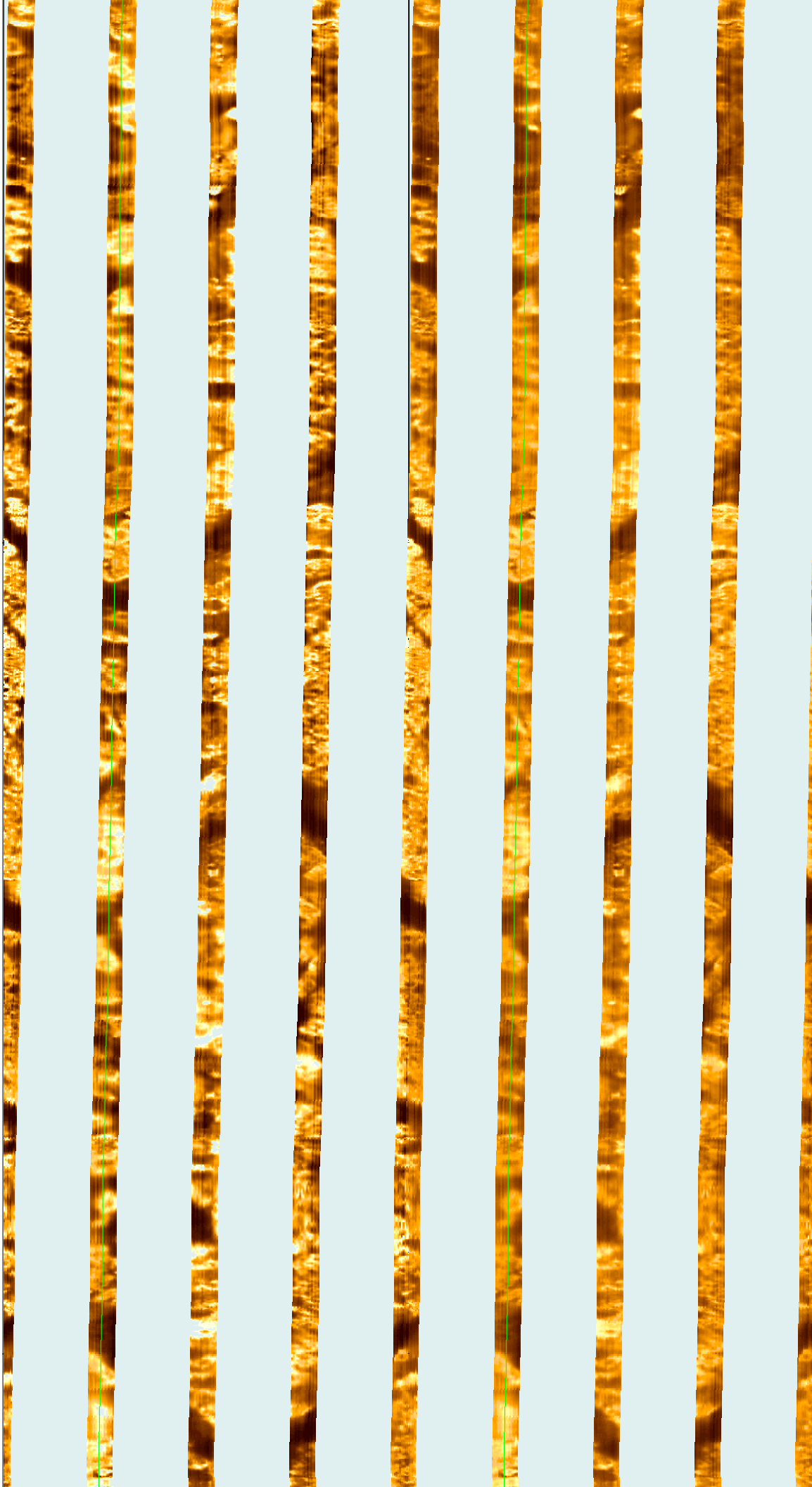


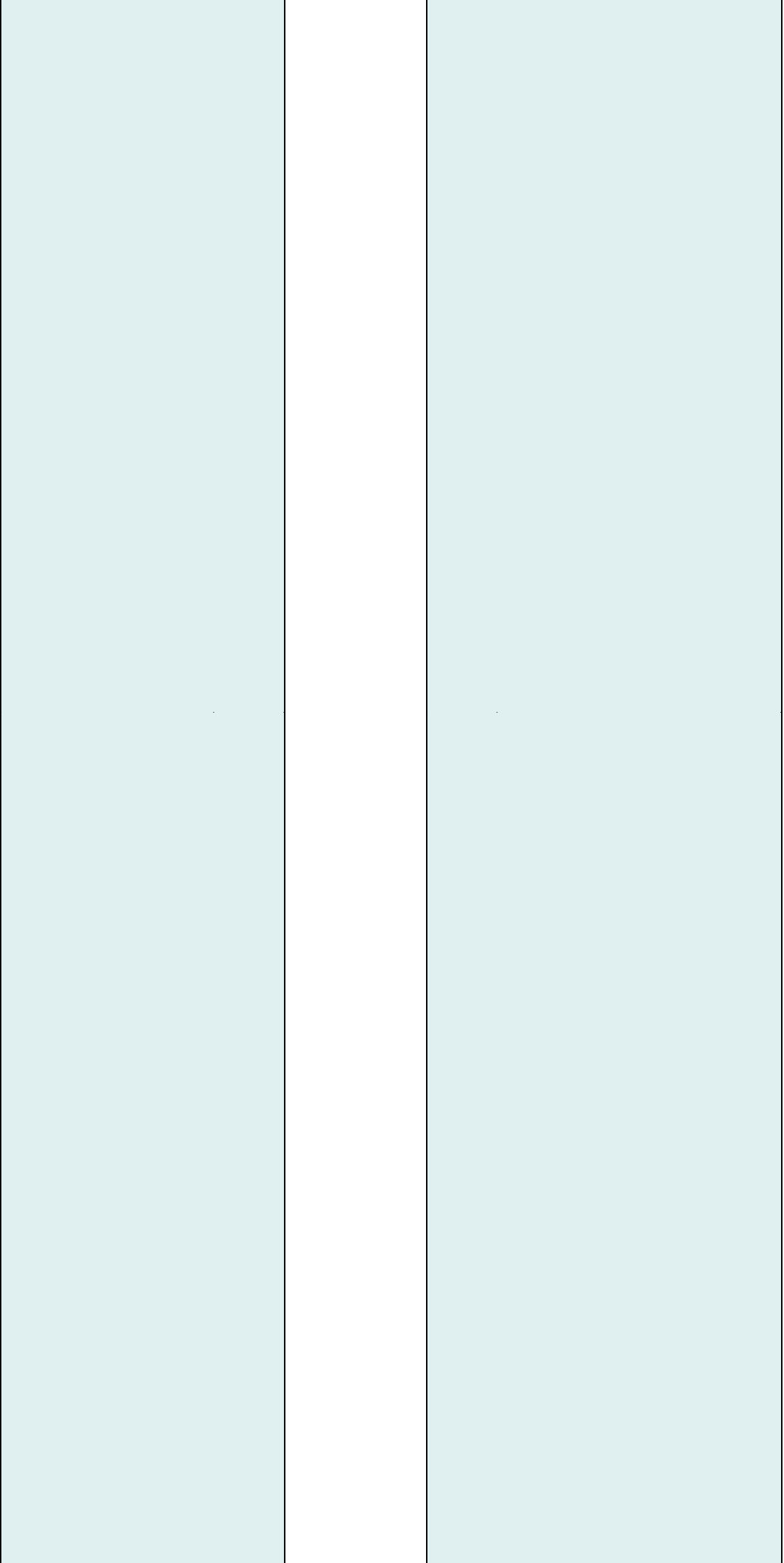


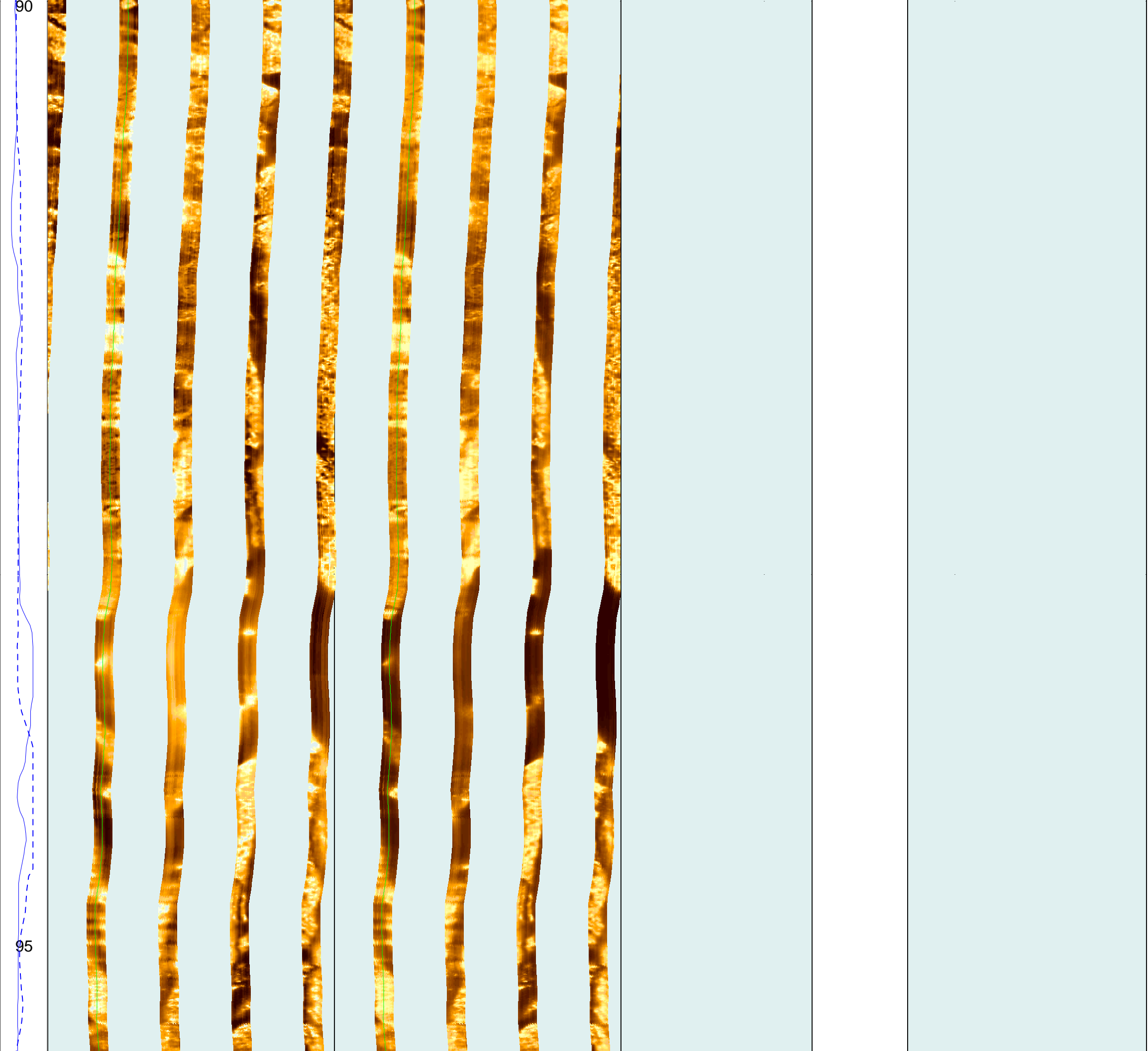






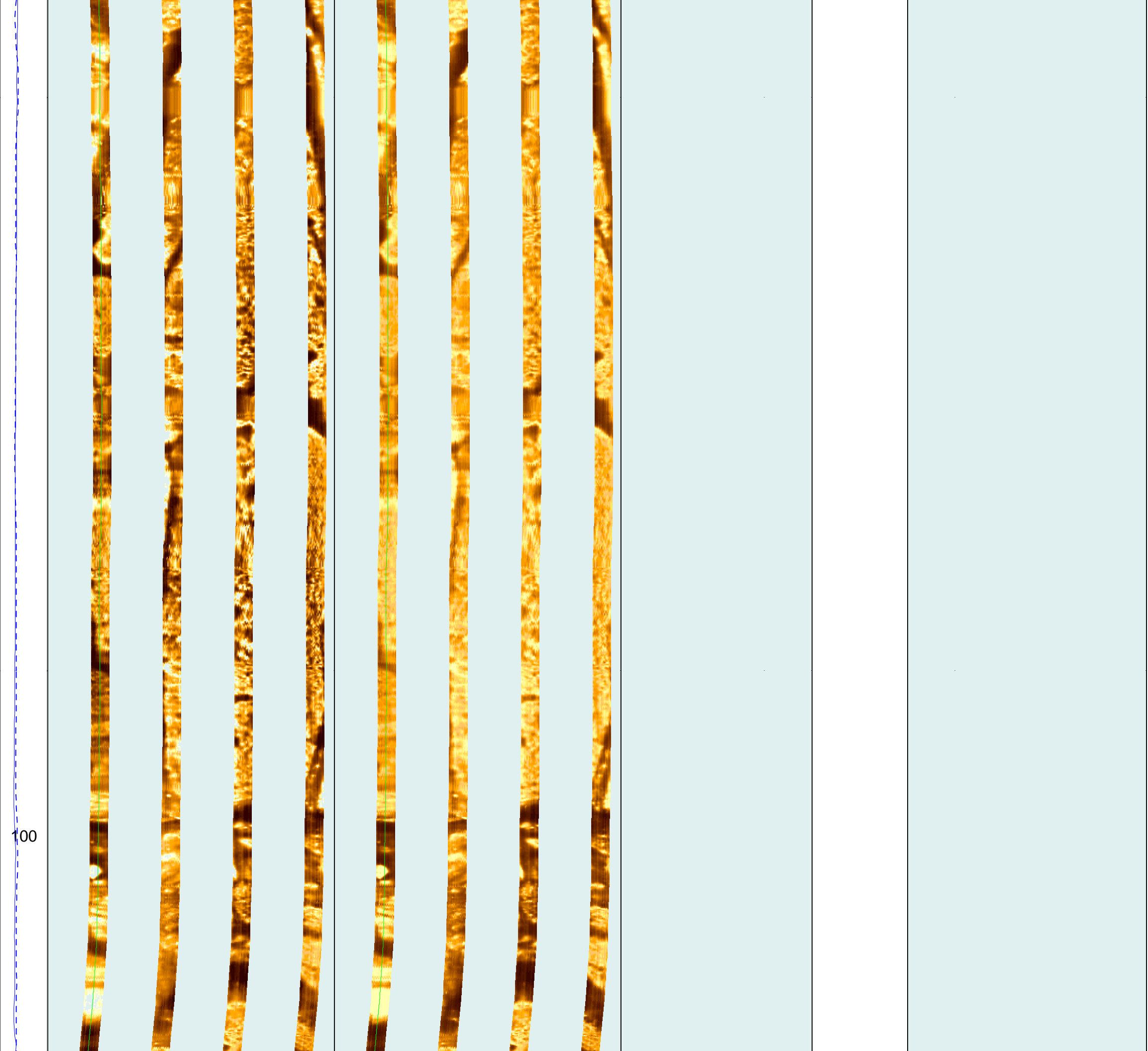




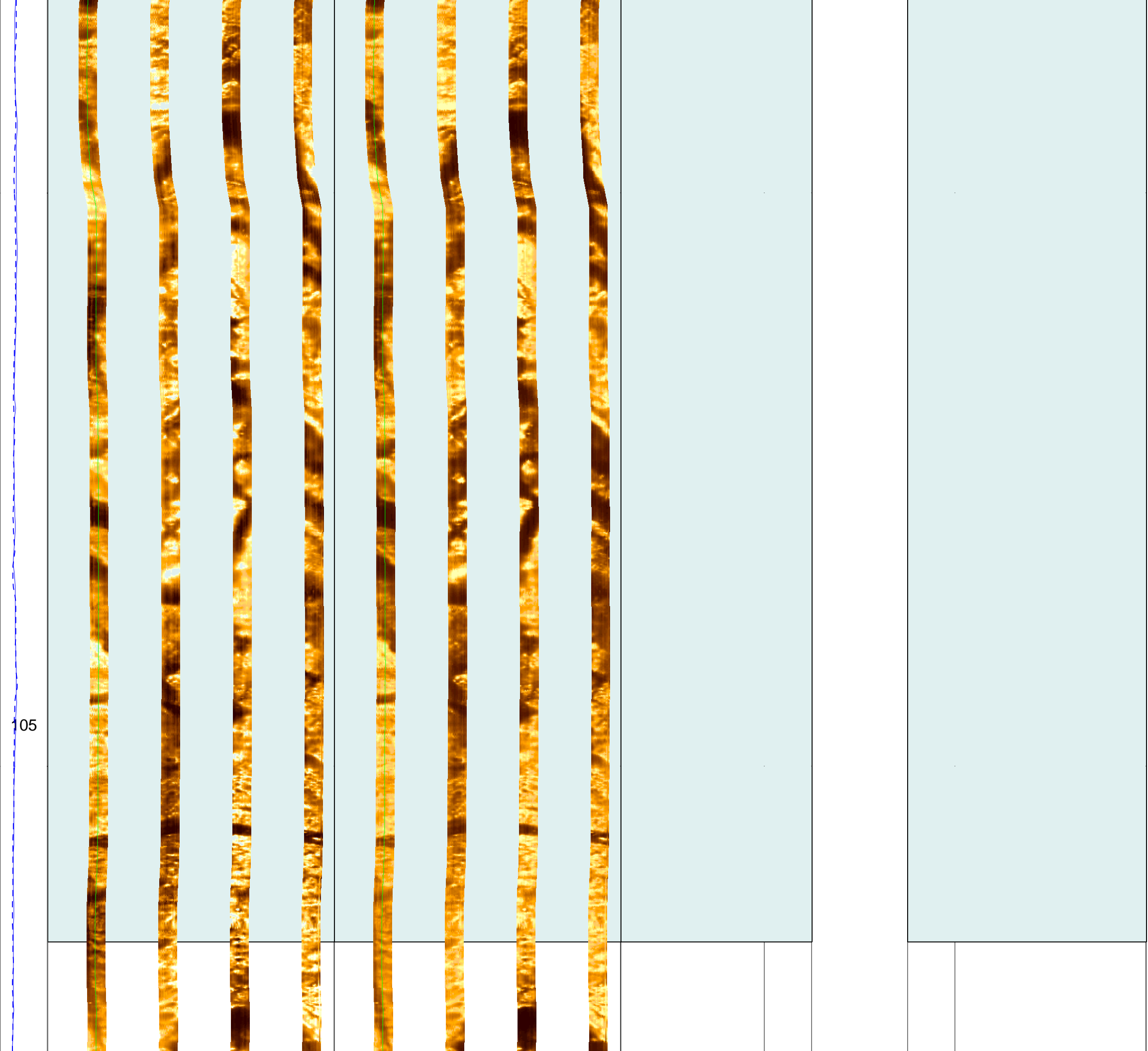


90

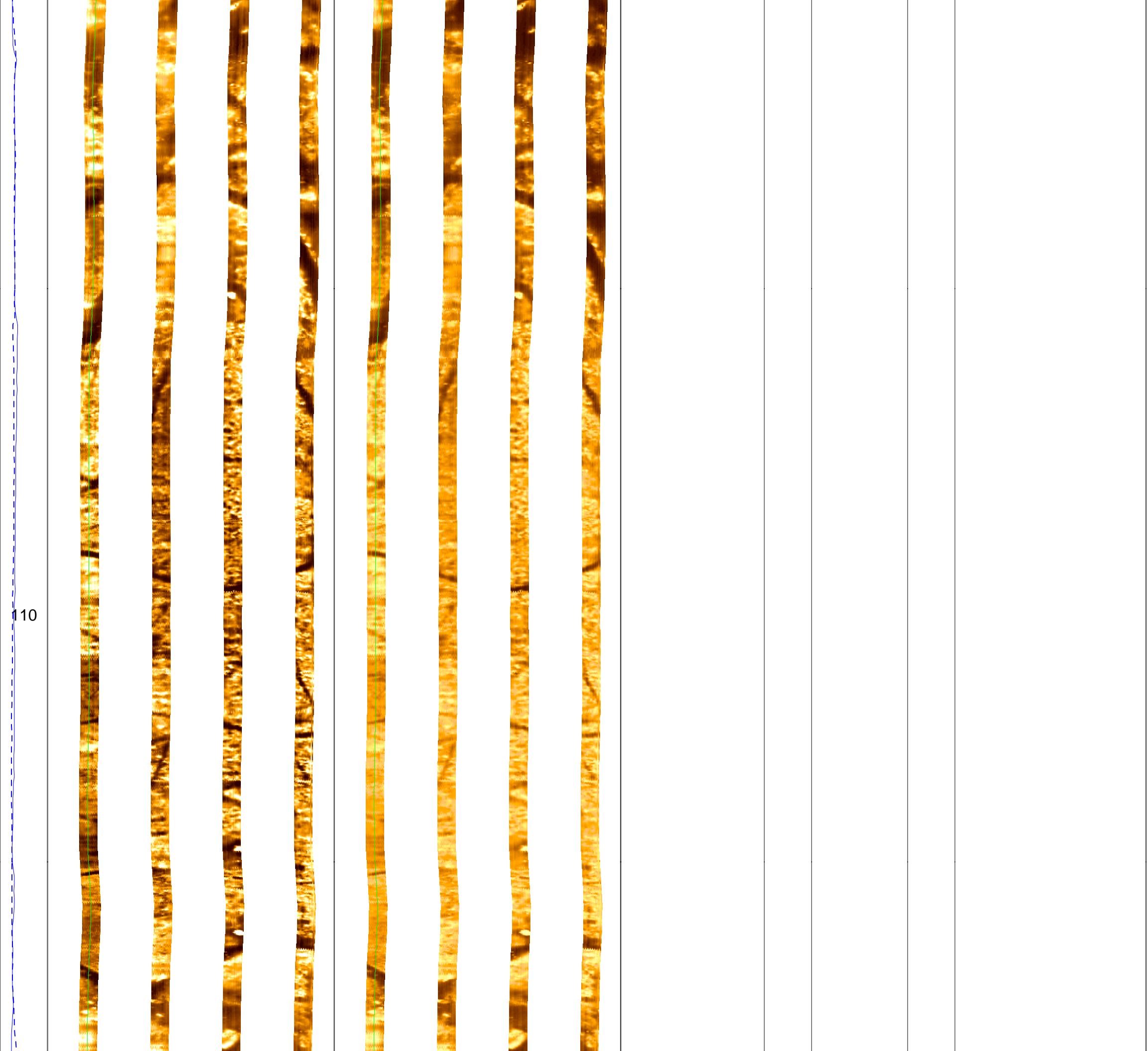
95



100

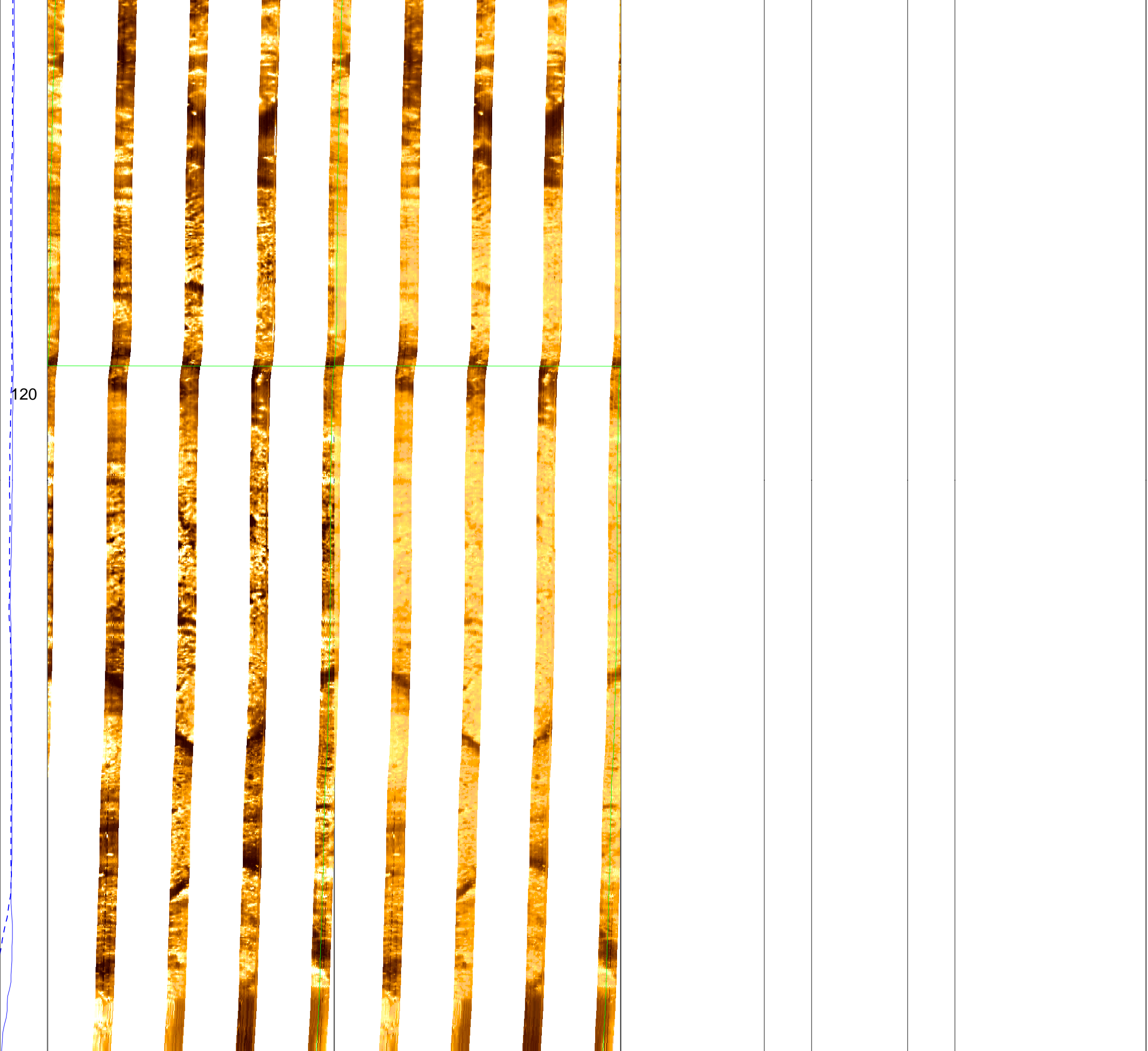


105









120





FMS\_DSI\_013LUP FMS4 .DYNA [C1165610]  
Horizontal Scale: 1 : 10.341  
Orientation North

FMS\_DSI\_013LUP FMS4 .STAT [C1165668]  
Horizontal Scale: 1 : 10.341  
Orientation North

