

Ocean: **Pacific** State: **Oregon**

Ocean:		Pacific	
Field:		Hydrate Ridge	
Location:		44.57041 E ; 125.14737 W	
Well:		ODP Leg 204 Site 1250B	
Company:		Lamont Doherty	

<div> <div>GeoVISION Resistivity - Image</div> <div>1 cm : 2 m</div> <div>Measured Depth</div> </div>			
<div> <div>Total depth:</div> <div>Spud date:</div> <div>Runs:</div> </div>		<div> <div>987.4 m</div> <div>23-Jul-02</div> <div>1 To 1</div> </div>	
<div> <div>Permanent datum:</div> <div>Log measured from:</div> <div>Depth reference:</div> </div>		<div> <div>Mean Sea Level</div> <div>Drill Floor</div> <div>Driller's Pipe Tally</div> </div>	
<div> <div>Elev.:</div> <div>0 m</div> </div>		<div> <div>K.B.</div> <div>G.L.</div> <div>D.F.</div> </div>	
<div> <div>11 m</div> <div>-795 m</div> <div>11 m</div> </div>		<div> <div>above Perm. datum</div> </div>	

Service Order no.	Longitude	Latitude
40007682	-125.14737	+44.57041

Depth logged:	806.0 m	To	986.1 m	Mag decl:	66.41 deg.	Other services:
Date logged:	23-Jul-02	To	24-Jul-02	Mag dip:	17.70 deg.	DWOB, DTOR, MWC
Bore hole record				Casing record		
Hole size	from	to	Size	Density	from	to
9.875 in.	806.0 m	987.4 m				
Type	Mud record from	to	Borehole deviation record			
Seawater	806.0 m	987.4 m	Min	Max	from	to
			0 deg.	0 deg.	806.0 m	987.4 m
Surface equipment			Software record			
Unit	Downhole Lab	IDEAL Wis	7.0_c2			
Depth system	PDE	SPM	7_0c_09			
		LWD	6.1, 8.0, 6.9			
		MWD	6.1			

IDEAL Version: ID7_0C_02
IDF

IDF

Graphics File Created: 13-Aug-2002 13:34

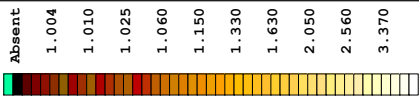
Vertical Scale: 1:200

Format: GEOVIS_RES_IMAGE

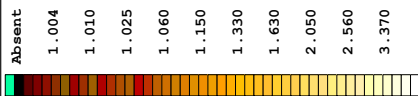
PIP SUMMARY

Ring Samples

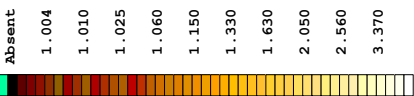
Gamma Ray Samples



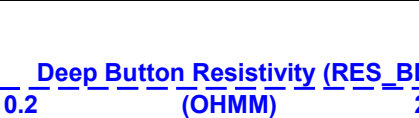
Deep Button Image (R3IM) (OHMM)



**Medium Button Image (R2IM)
(OHMM)**



Shallow Button Image (R1IM) (OHMM)



Deep Button Resistivity (RES_BD)
2 (OHMM) 20



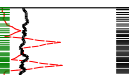
Medium Button Resistivity (RES_BM)
0.2 (OHMM) 200

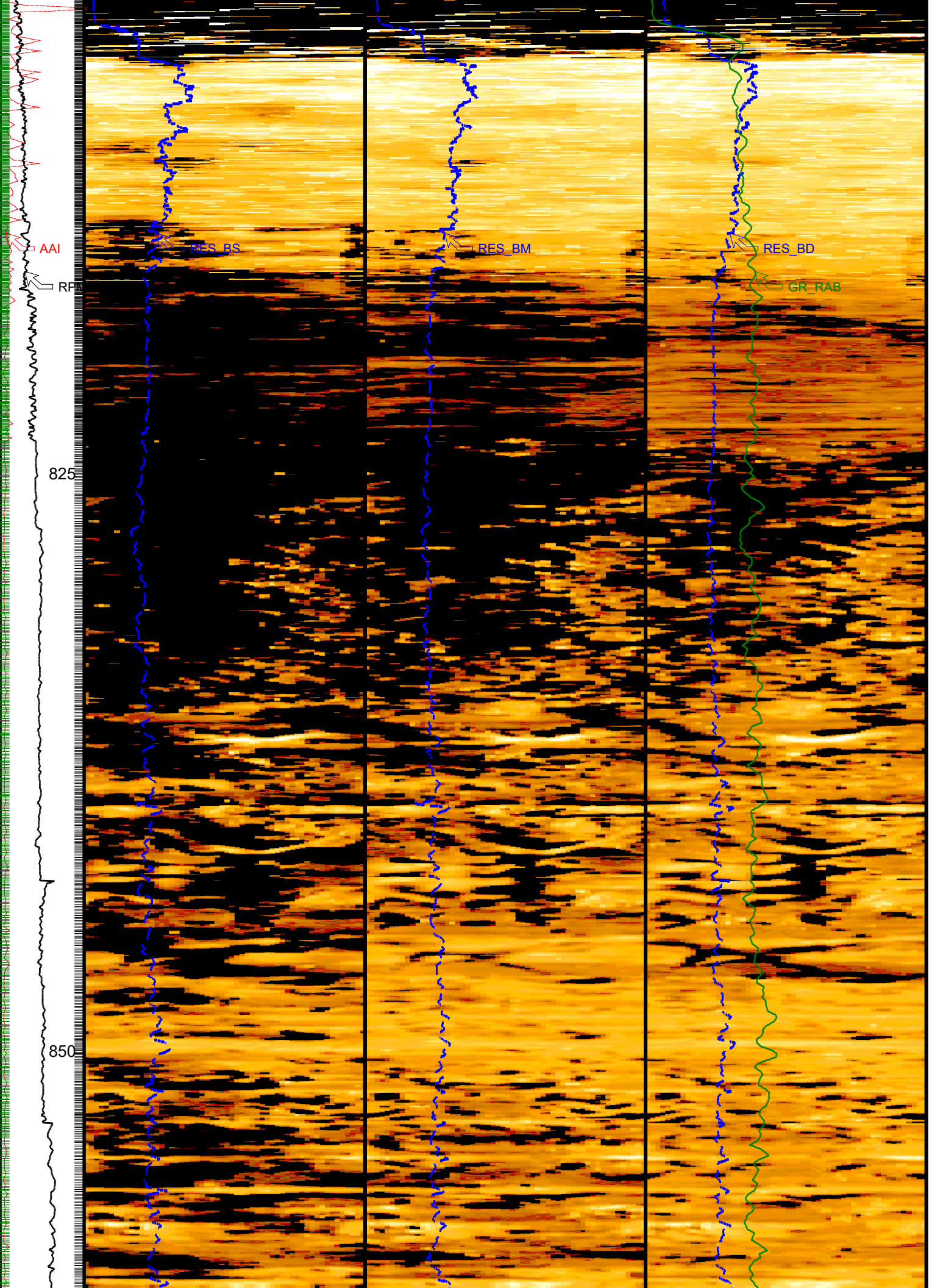


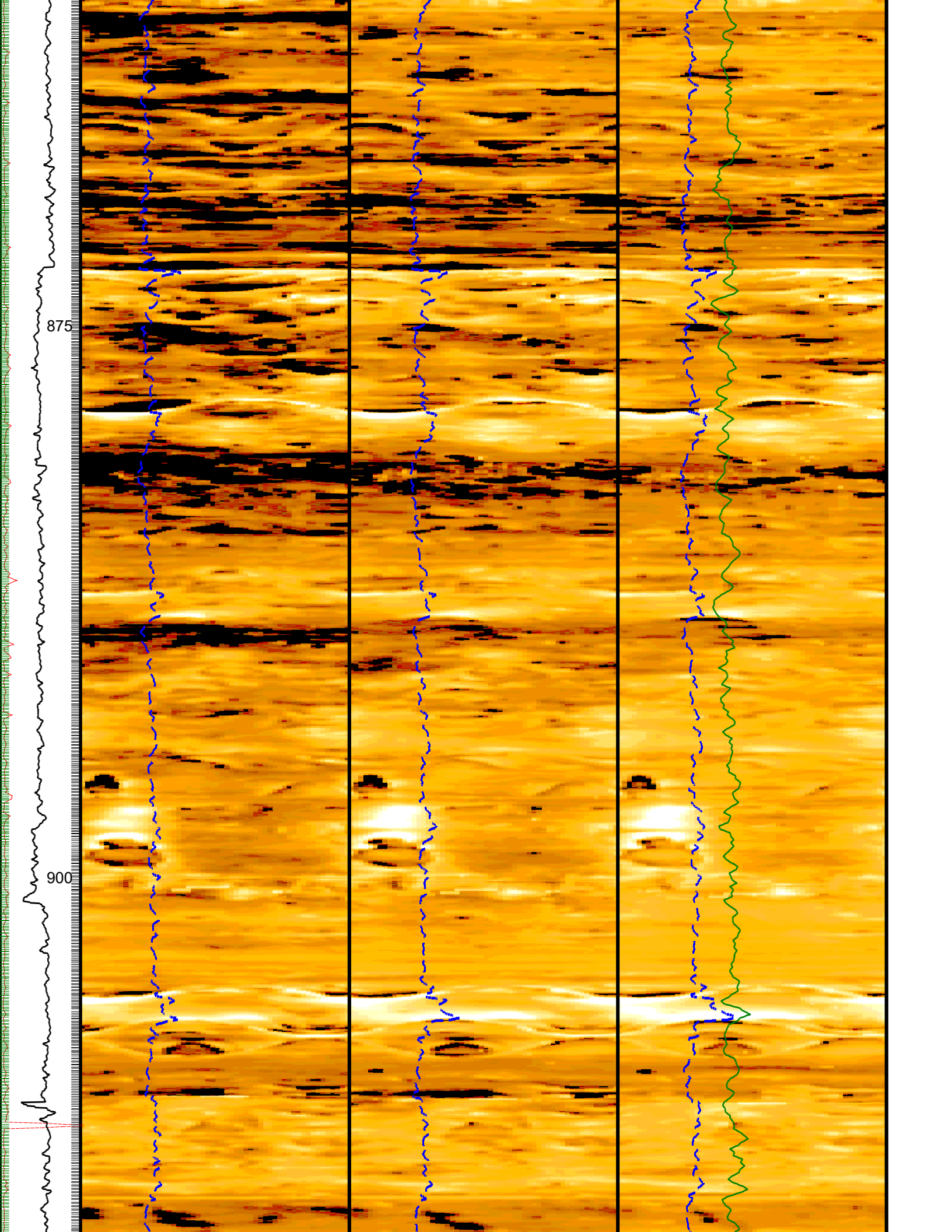
Shallow Button Resistivity (RES_BS)
0.2 (OHMM) 200

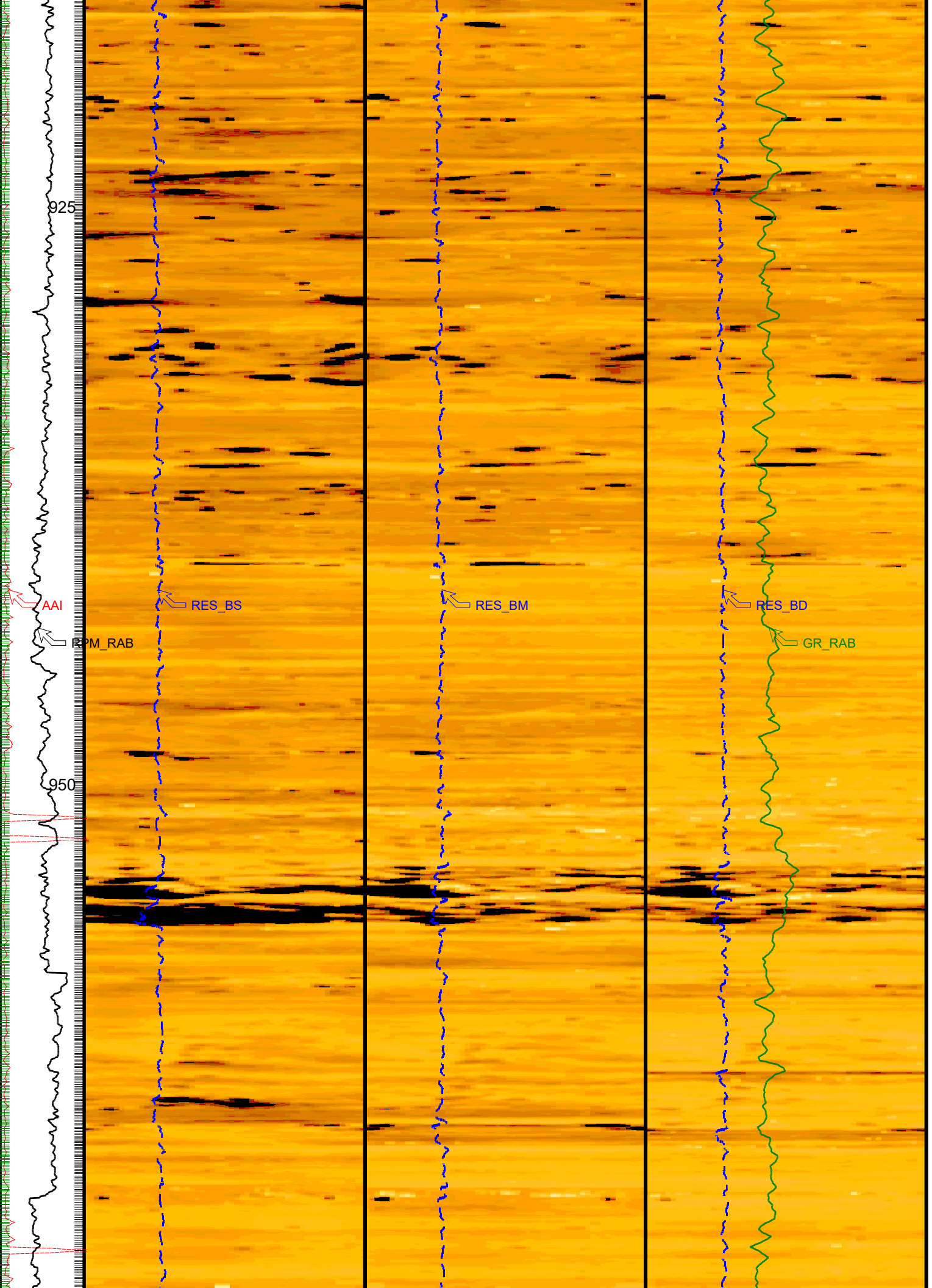
RAB Rotational Speed (RPM_RAB) (RPM)
0
100

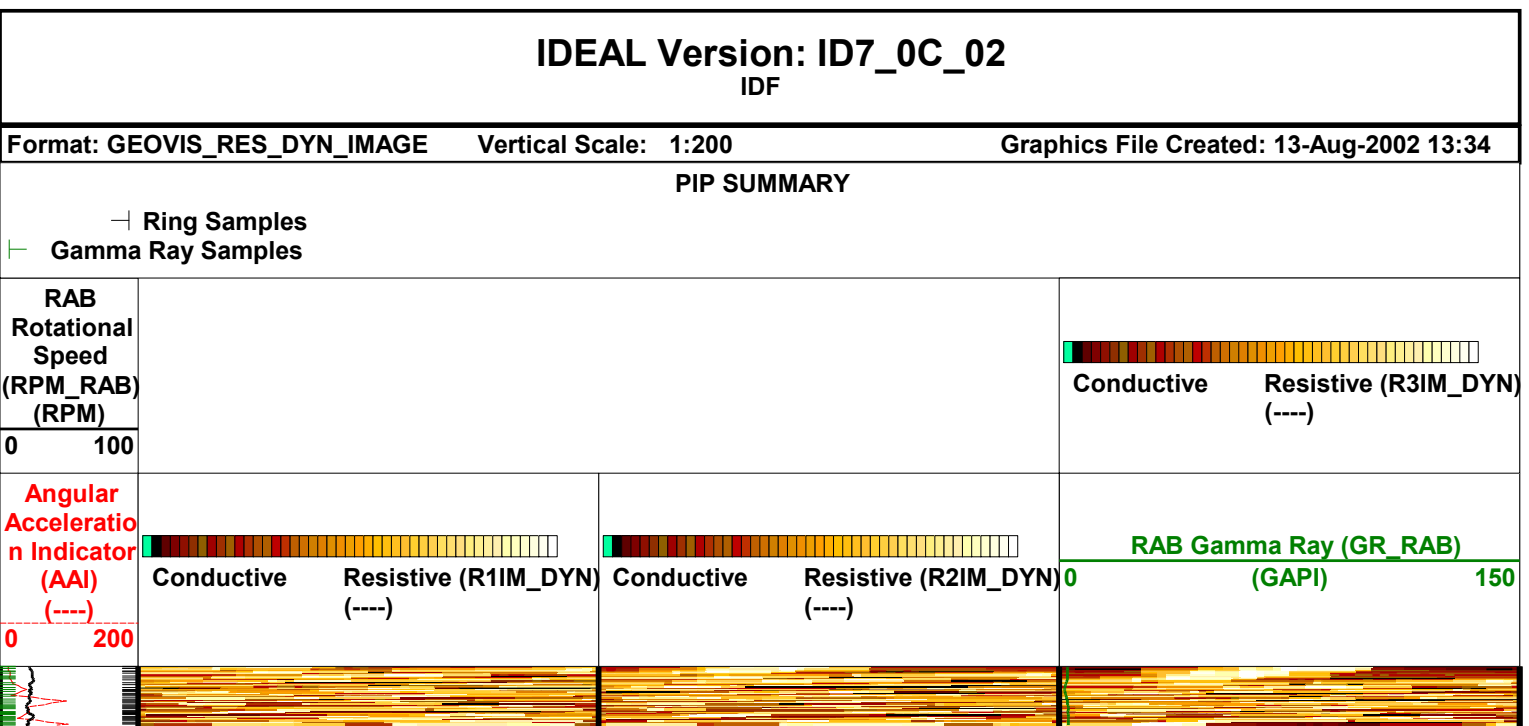
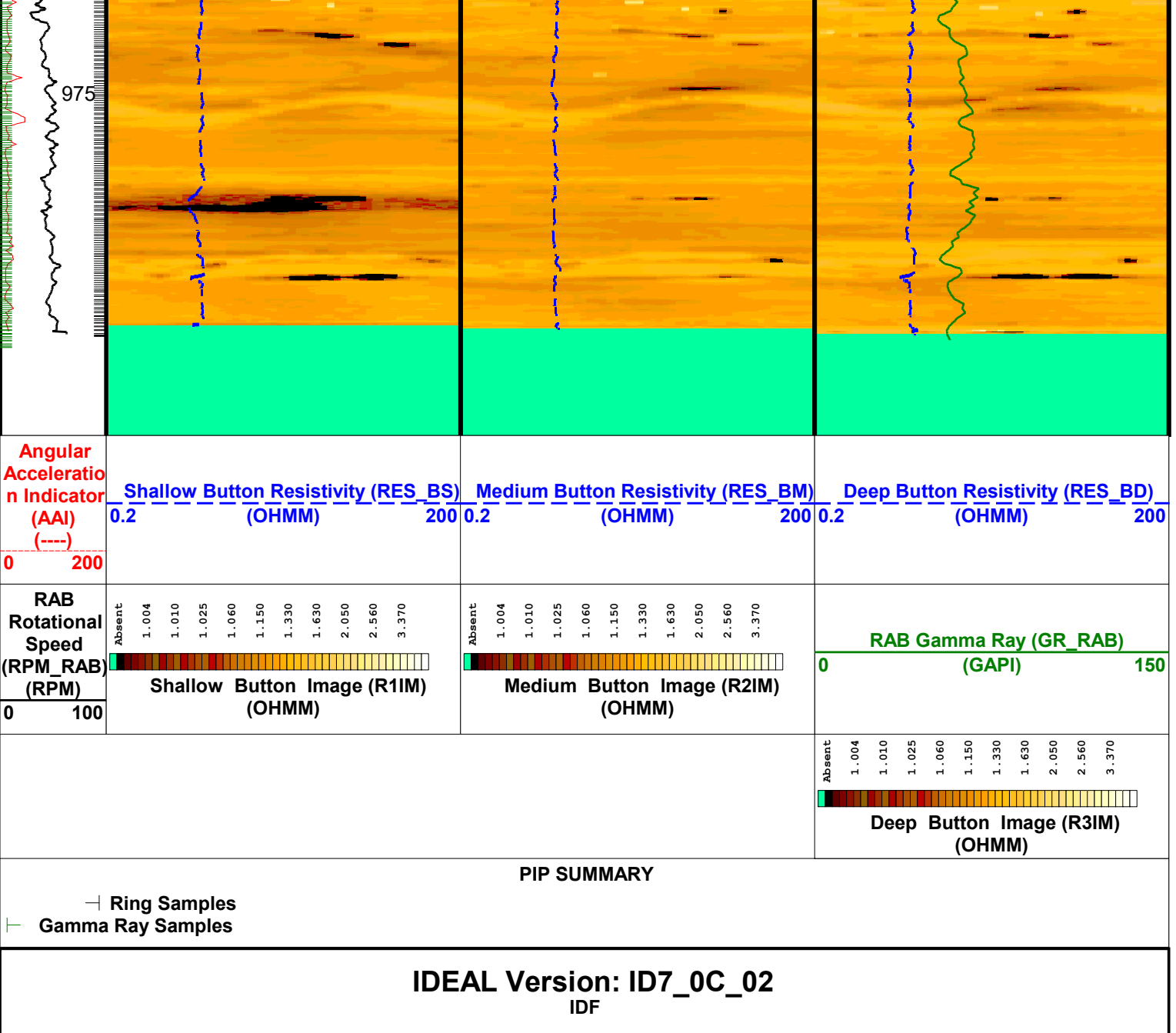
Angular Acceleration Indicator (AAI)

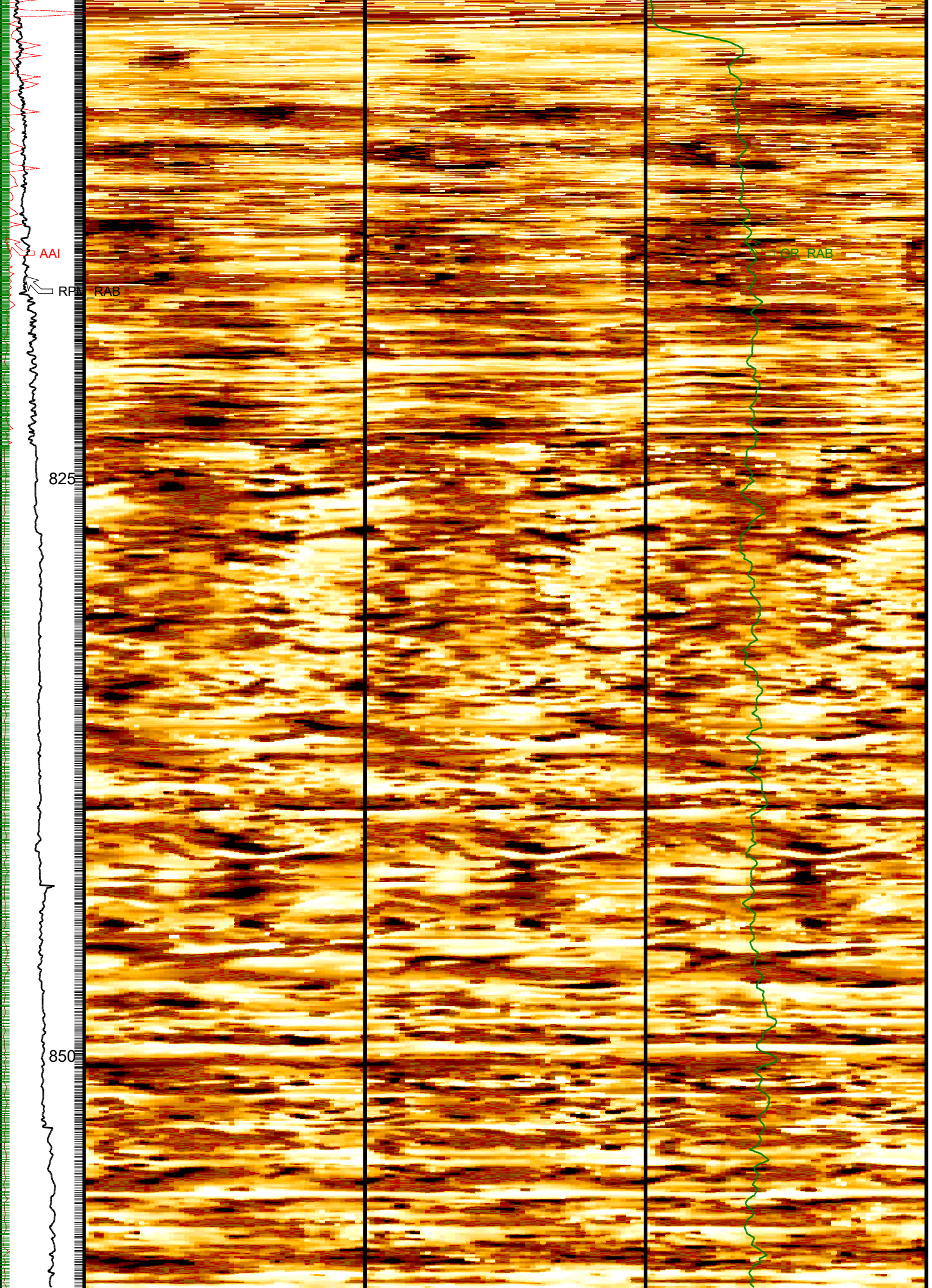


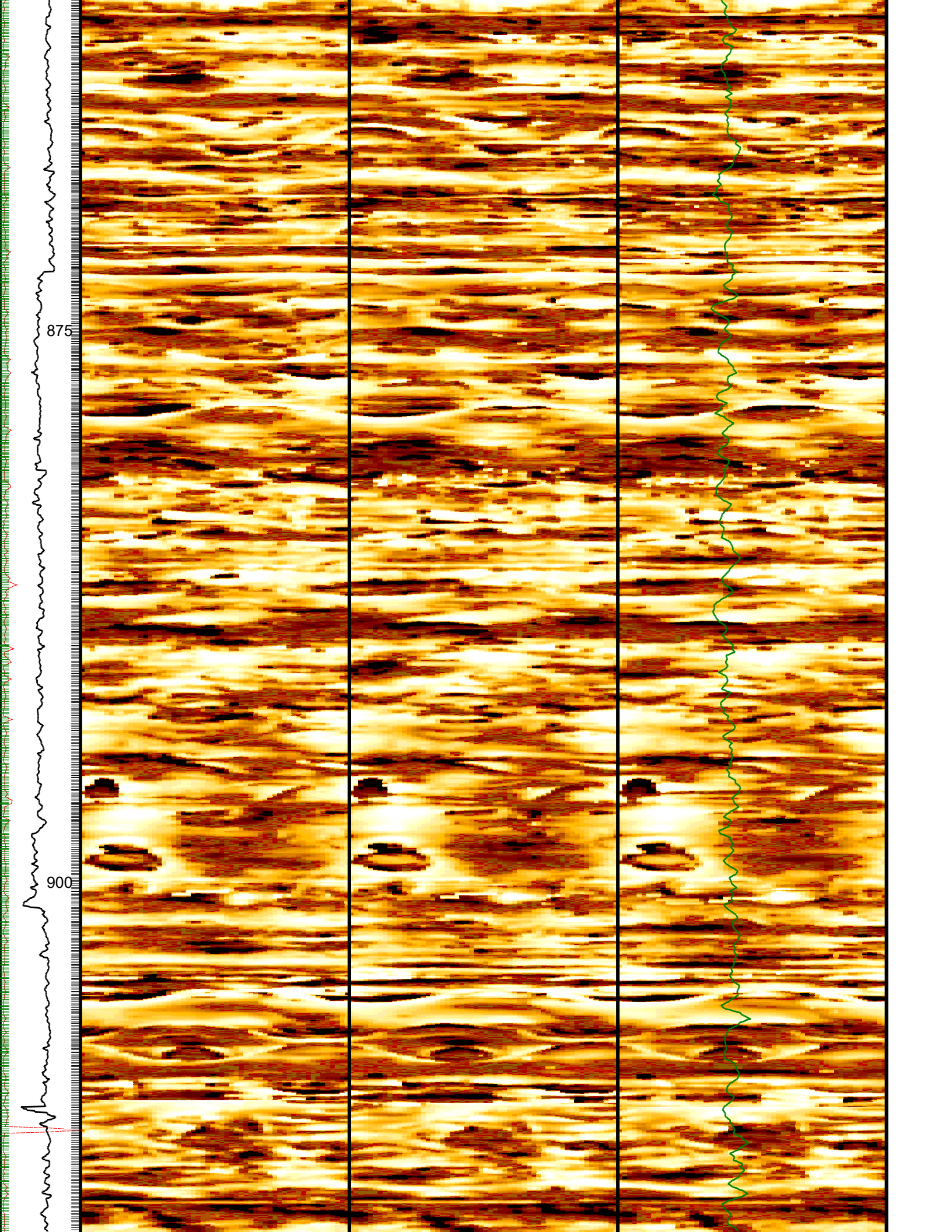


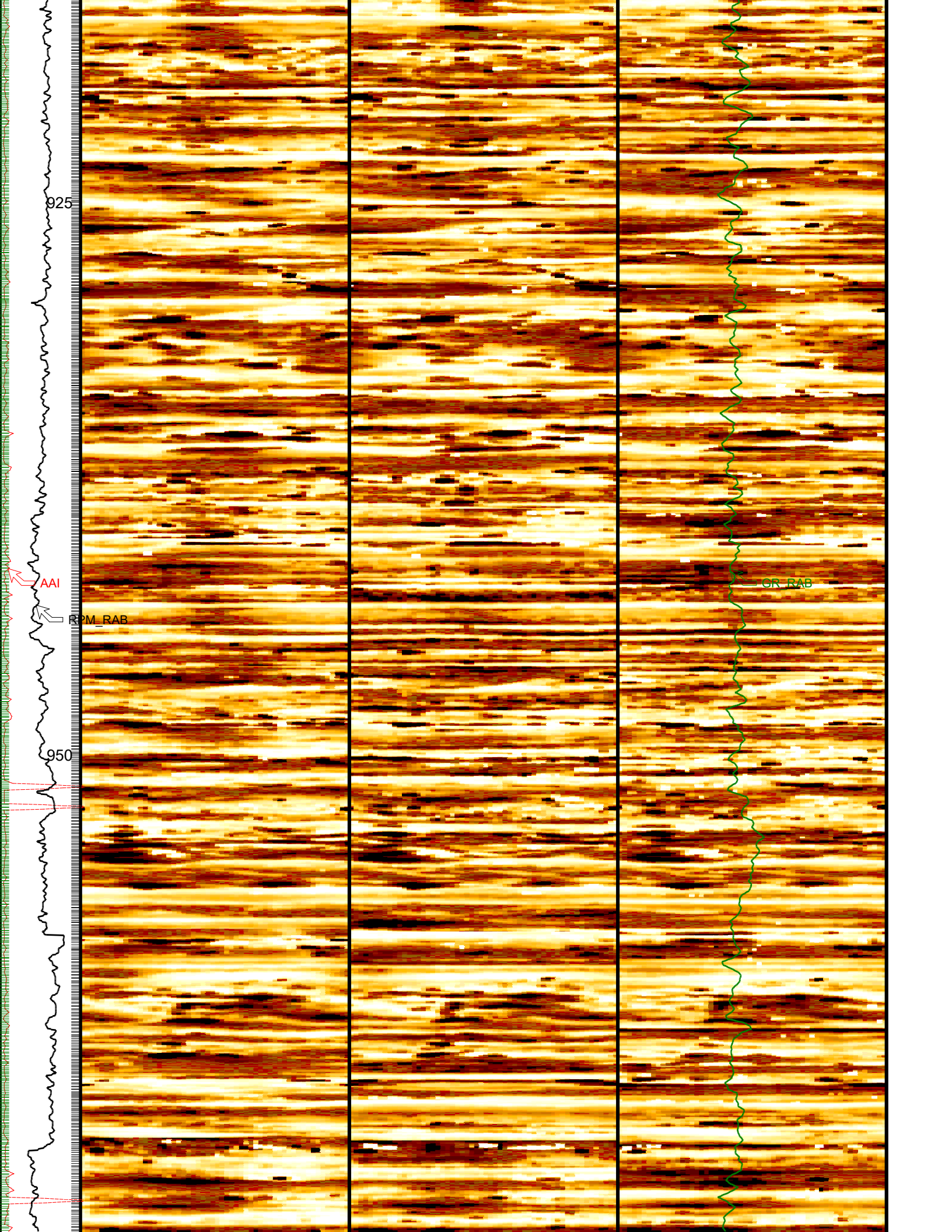


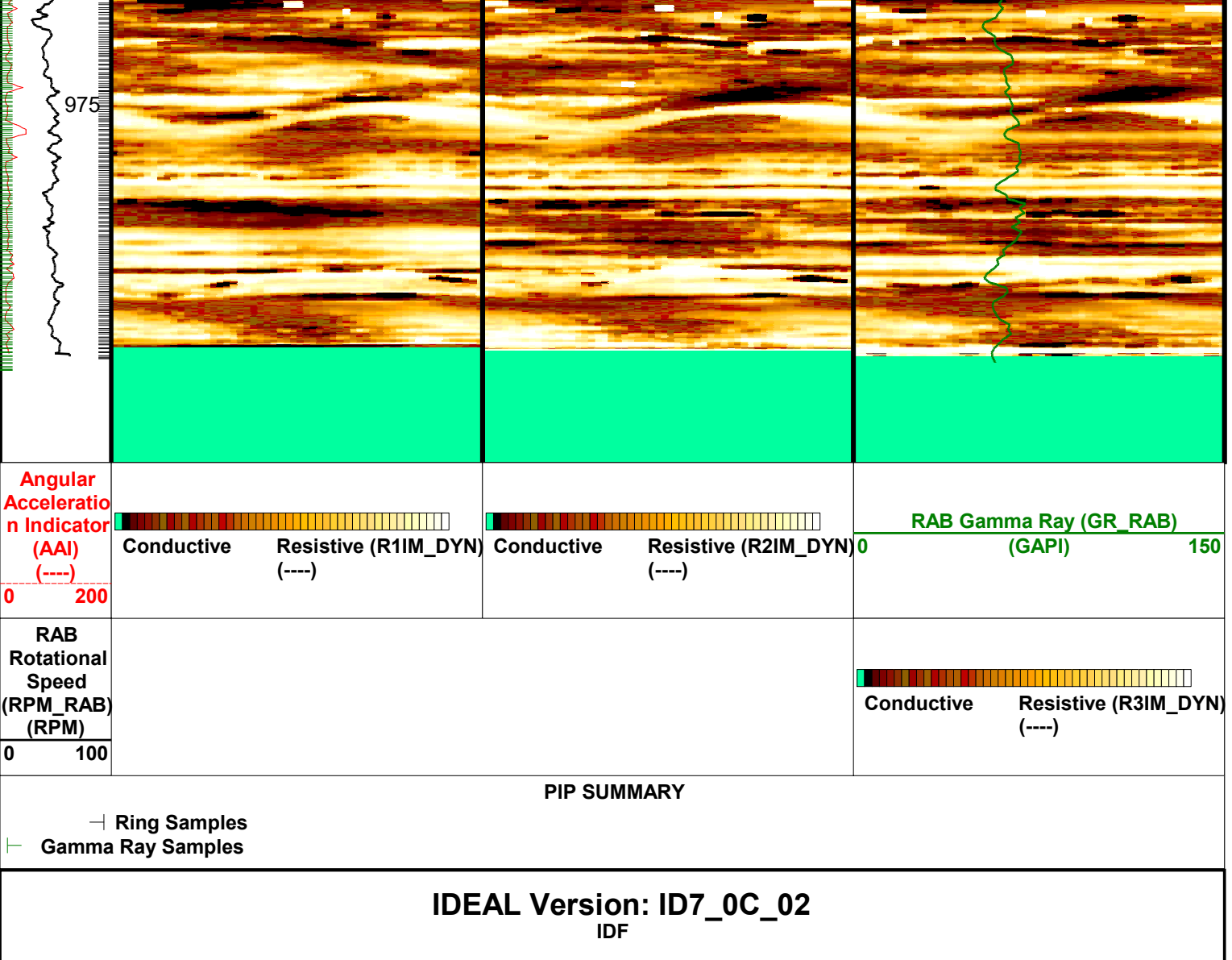












Company:	Lamont Doherty	
Well:	ODP Leg 204 Site 1250B	
Field:	Hydrate Ridge	
Ocean:	Pacific	
State:	Oregon	
<div>GeoVISION Resistivity - Image 1 cm : 2 m Measured Depth</div>		

