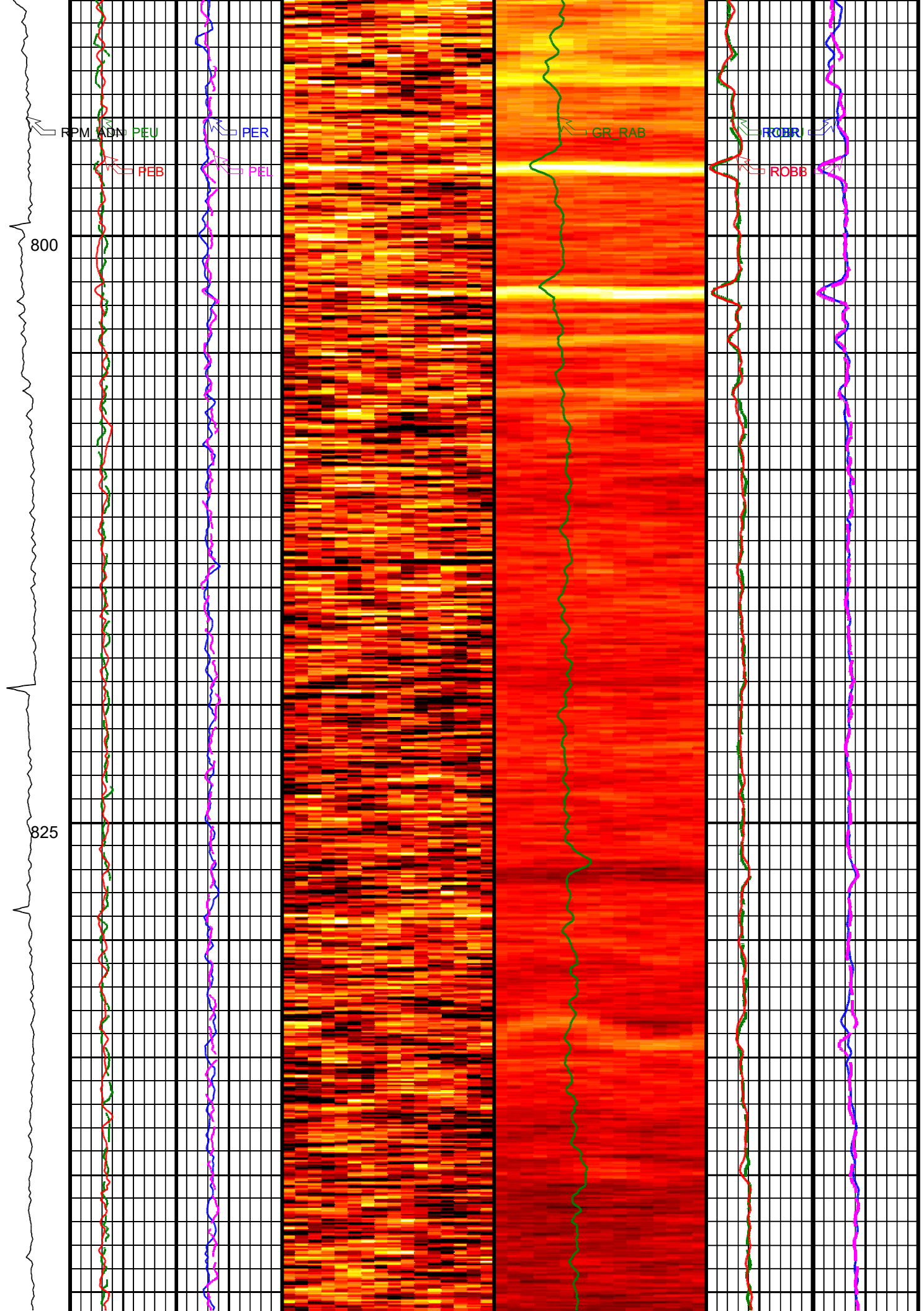
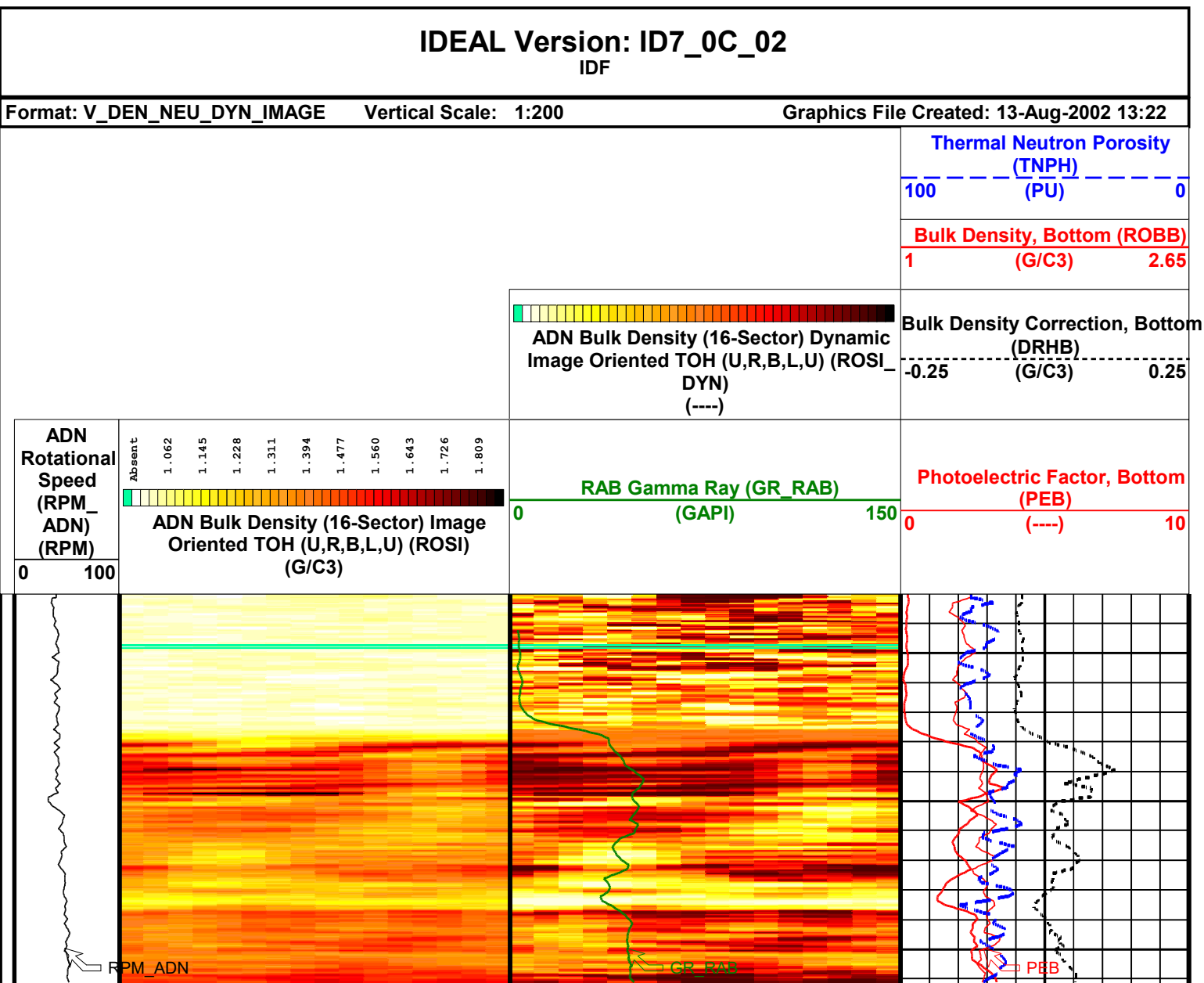
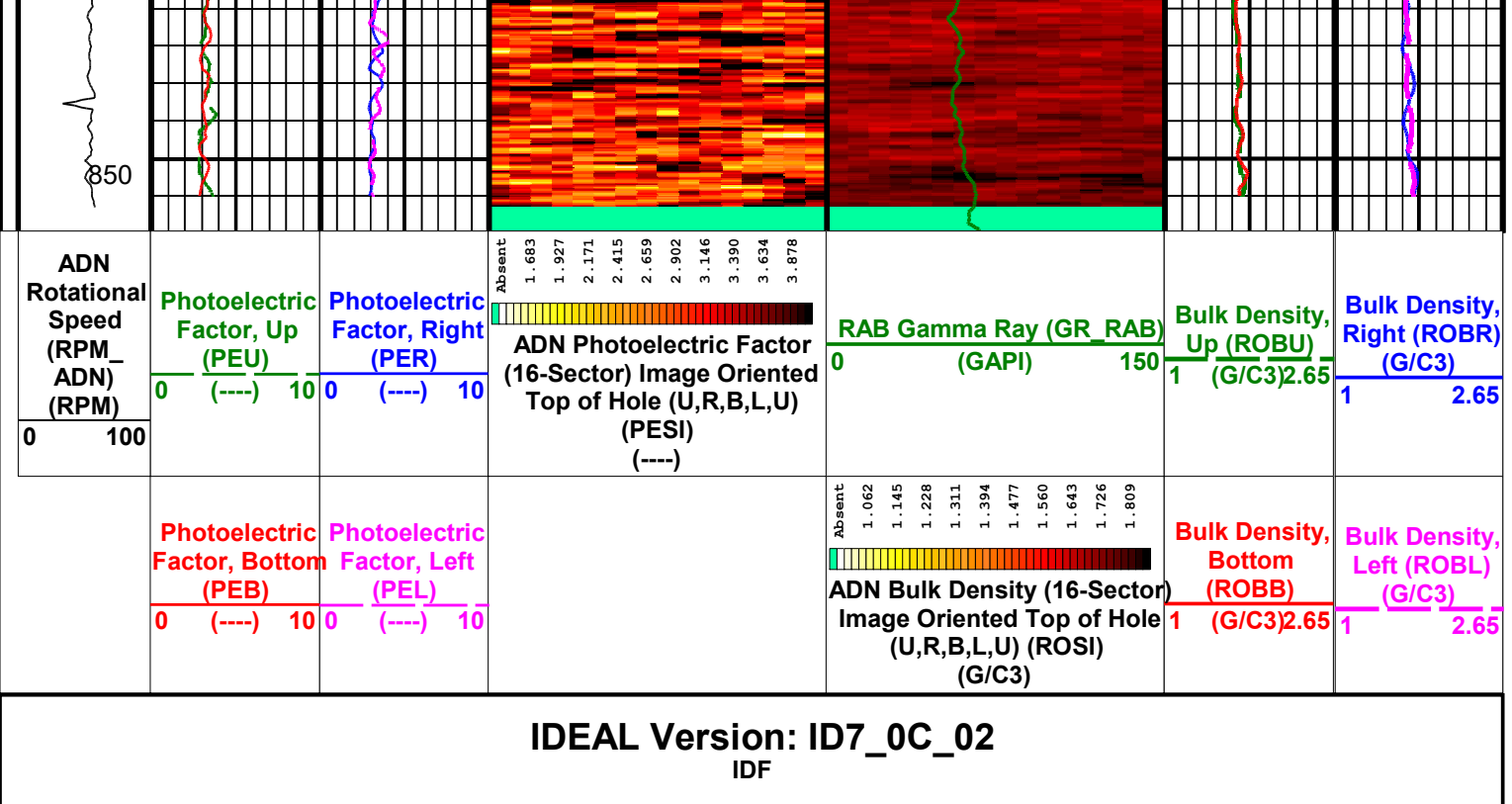
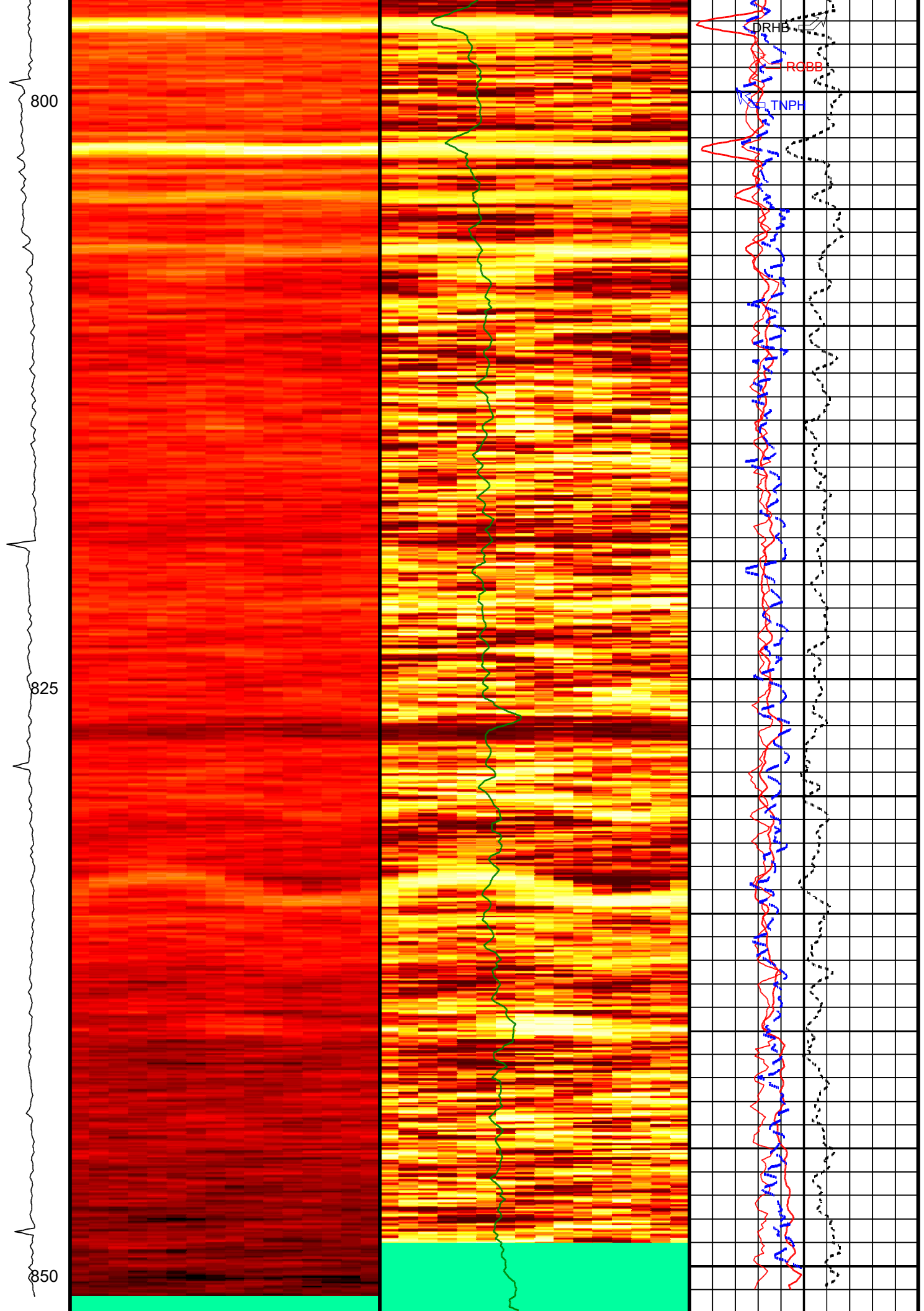


Company: **Lamont Doherty**  
Well: **ODP Leg 204 Site 1249A**  
Field: **Hydrate Ridge**  
Ocean: **Pacific** State: **Oregon**

IDEAL Version: ID7_0C_02 IDF						
Format: V_DEN_NEU_IMAGE		Vertical Scale: 1:200		Graphics File Created: 13-Aug-2002 13:22		
	<div>Photoelectric Factor, Bottom (PEB)</div> <div>0 (----) 10</div>	<div>Photoelectric Factor, Left (PEL)</div> <div>0 (----) 10</div>	<div><div><div>Absent</div><div>1.062</div><div>1.145</div><div>1.228</div><div>1.311</div><div>1.394</div><div>1.477</div><div>1.560</div><div>1.643</div><div>1.726</div><div>1.809</div></div><div>ADN Bulk Density (16-Sector)</div><div>Image Oriented Top of Hole (U,R,B,L,U) (ROSI) (G/C3)</div></div>	<div>Bulk Density, Bottom (ROBB)</div> <div>1 (G/C3)2.65</div>	<div>Bulk Density, Left (ROBL) (G/C3)</div> <div>1 2.65</div>	
<div>ADN Rotational Speed (RPM_ADN) (RPM)</div> <div>0 100</div>	<div>Photoelectric Factor, Up (PEU)</div> <div>0 (----) 10</div>	<div>Photoelectric Factor, Right (PER)</div> <div>0 (----) 10</div>	<div><div><div>Absent</div><div>1.683</div><div>1.927</div><div>2.171</div><div>2.415</div><div>2.659</div><div>2.902</div><div>3.146</div><div>3.390</div><div>3.634</div><div>3.878</div></div><div>ADN Photoelectric Factor (16-Sector) Image Oriented Top of Hole (U,R,B,L,U) (PESI) (----)</div></div>	<div>RAB Gamma Ray (GR_RAB) (GAPI)</div> <div>0 150</div>	<div>Bulk Density, Up (ROBU) (G/C3)</div> <div>1 (G/C3)2.65</div>	<div>Bulk Density, Right (ROBR) (G/C3)</div> <div>1 2.65</div>







<div>ADN Rotational Speed (RPM_ADN) (RPM)</div> <div>0100</div>	<div> <div>Absent</div> <div>1.0621.1451.2281.3111.3941.4771.5601.6431.7261.809</div> <div>ADN Bulk Density (16-Sector) Image Oriented TOH (U,R,B,L,U) (ROSI) (G/C3)</div> </div>	<div>RAB Gamma Ray (GR_RAB)</div> <div>0150</div> <div>(GAPI)</div>	<div>Photoelectric Factor, Bottom (PEB)</div> <div>010</div> <div>(----</div>
		<div>ADN Bulk Density (16-Sector) Dynamic Image Oriented TOH (U,R,B,L,U) (ROSI_DYN) (----)</div>	<div>Bulk Density Correction, Bottom (DRHB)</div> <div>-0.250.25</div> <div>(G/C3)</div>
			<div>Bulk Density, Bottom (ROBB)</div> <div>12.65</div> <div>(G/C3)</div>
			<div>Thermal Neutron Porosity (TNPH)</div> <div>1000</div> <div>(PU)</div>

**IDEAL Version: ID7\_0C\_02**  
IDF

**Company: Lamont Doherty**

# Schlumberger

Well: **ODP Leg 204 Site 1249A**

Field: **Hydrate Ridge**

Ocean: **Pacific**

**State:** Oregon

## VISION Azimuthal Density and Neutron - Image

**1 cm : 2 m**

## Measured Depth