

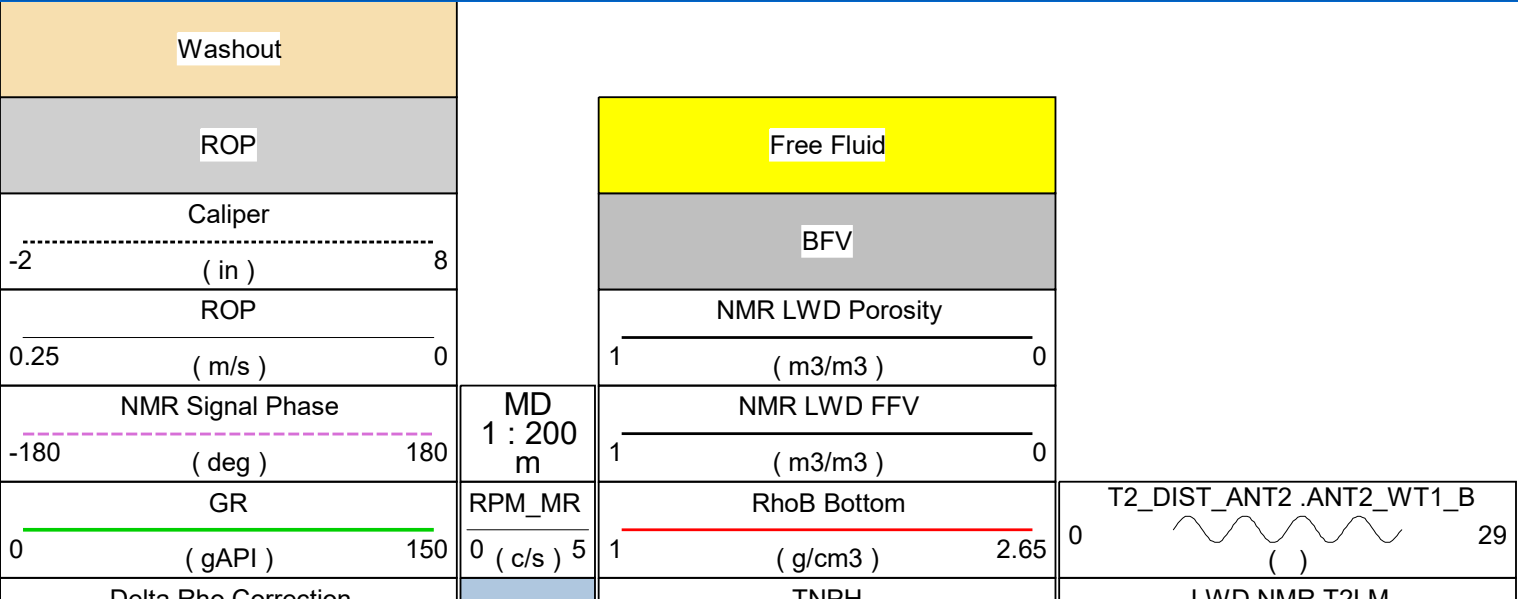


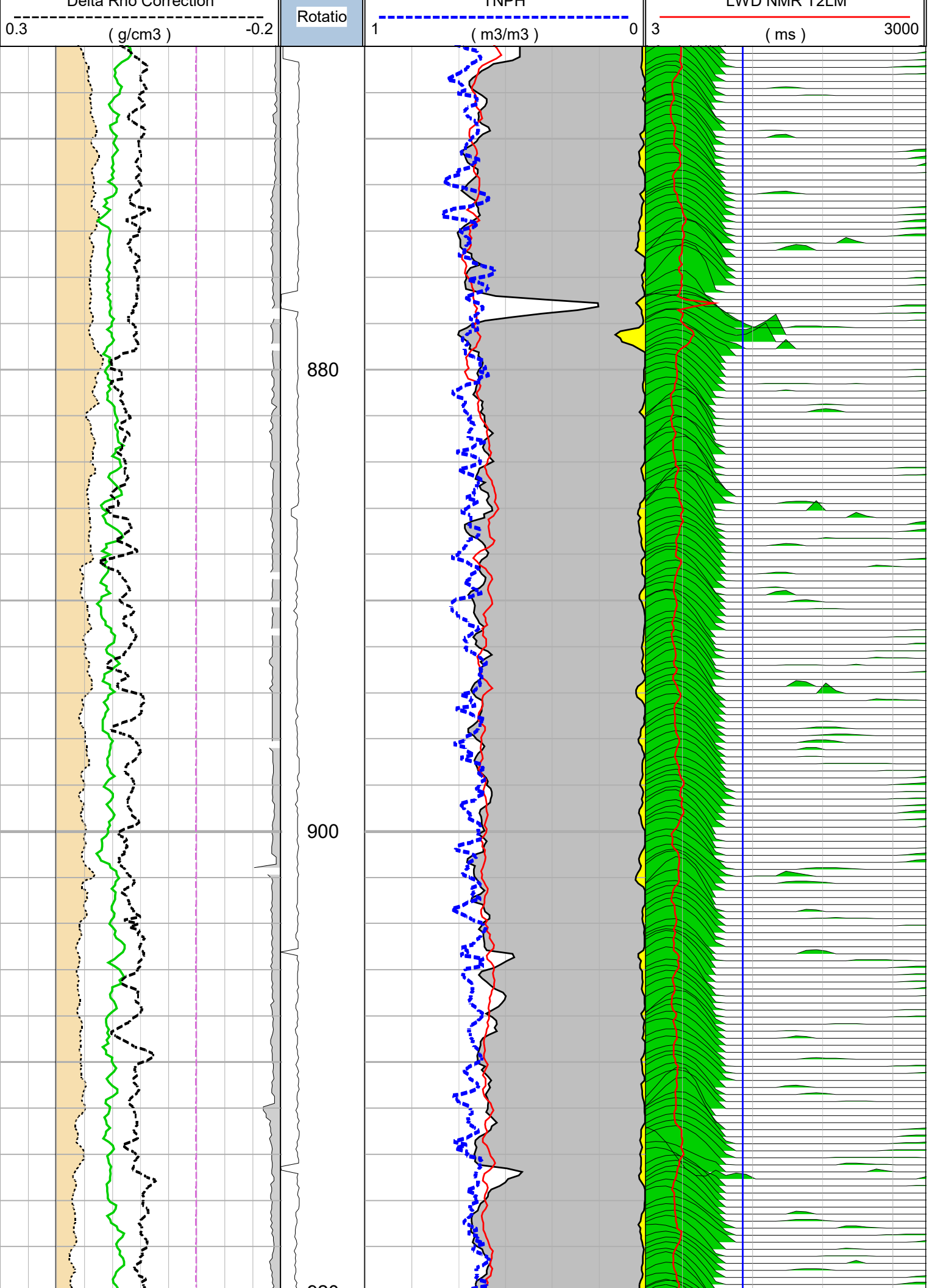
COMPANY: LAMONT DOHERTY
WELL: ODP 1248a
FIELD: HYDRATE RIDGE
STATE: OREGON
COUNTRY: U.S.A

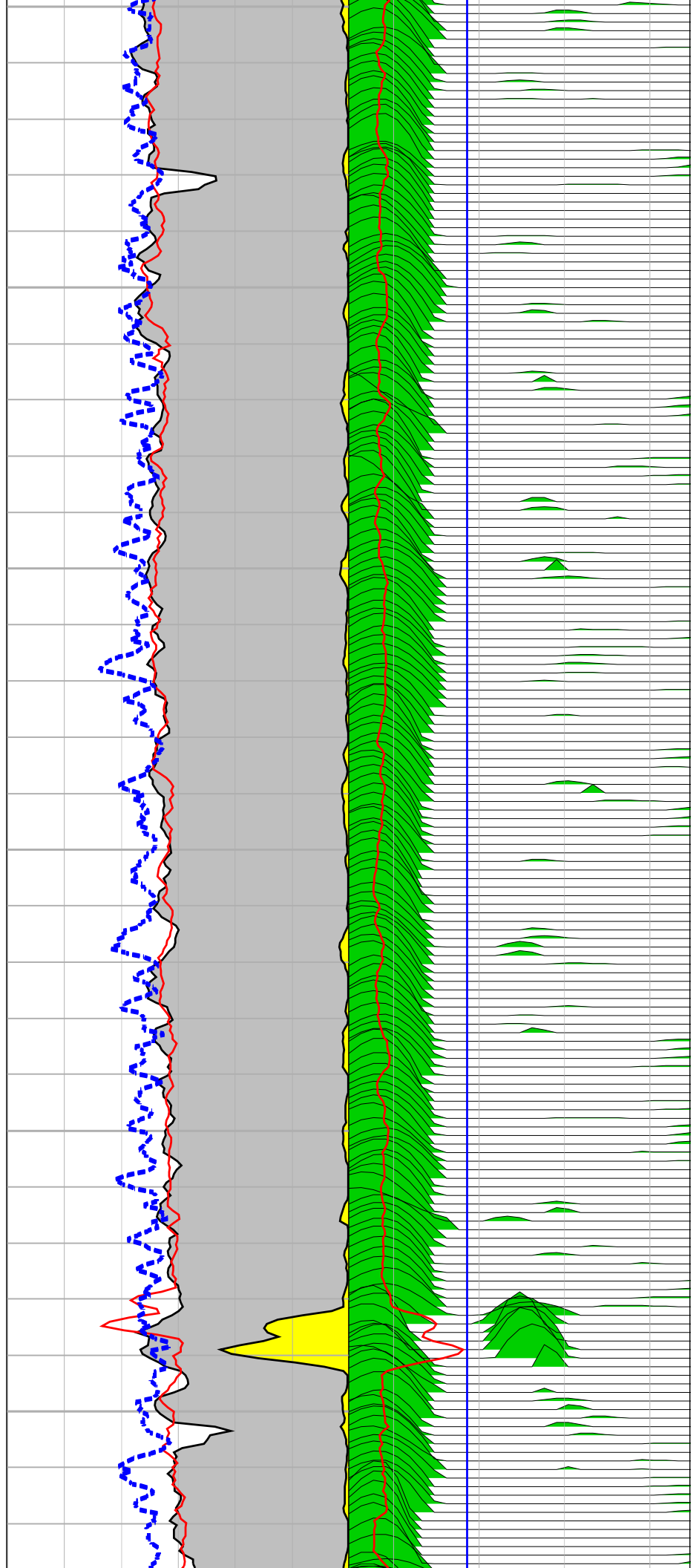
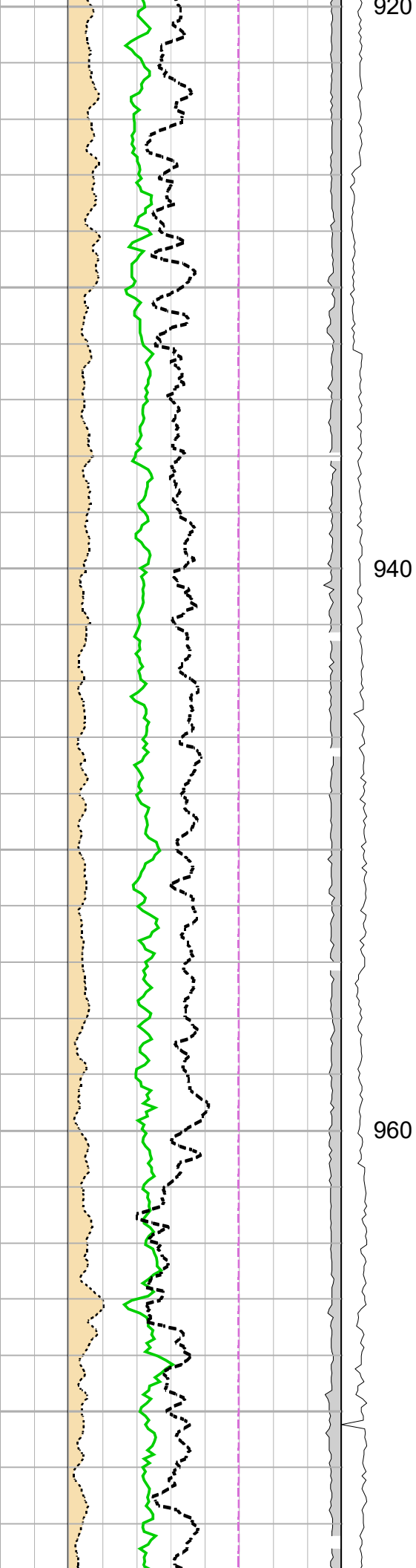
Date Processed: Aug 16/2002 Date Logged:
Job Number: Processed at:
Well Location:
Latitude: Longitude:
Elevations: KB: DF: GL:

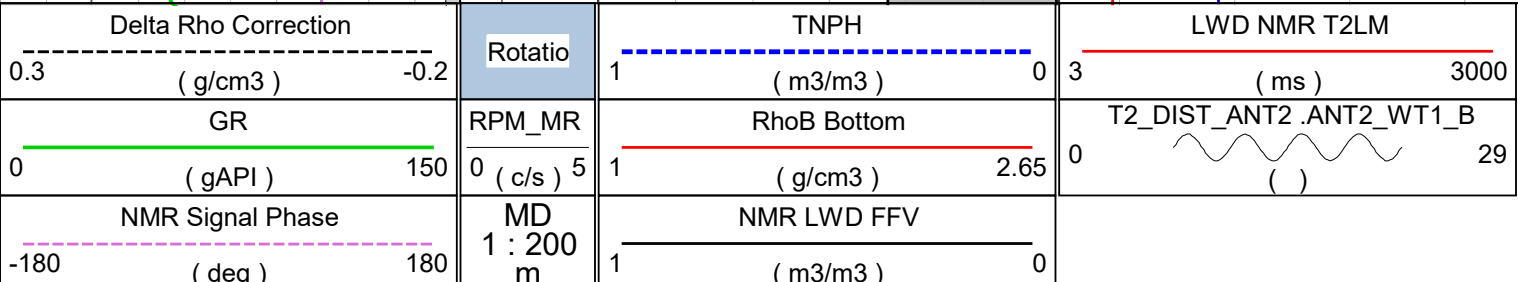
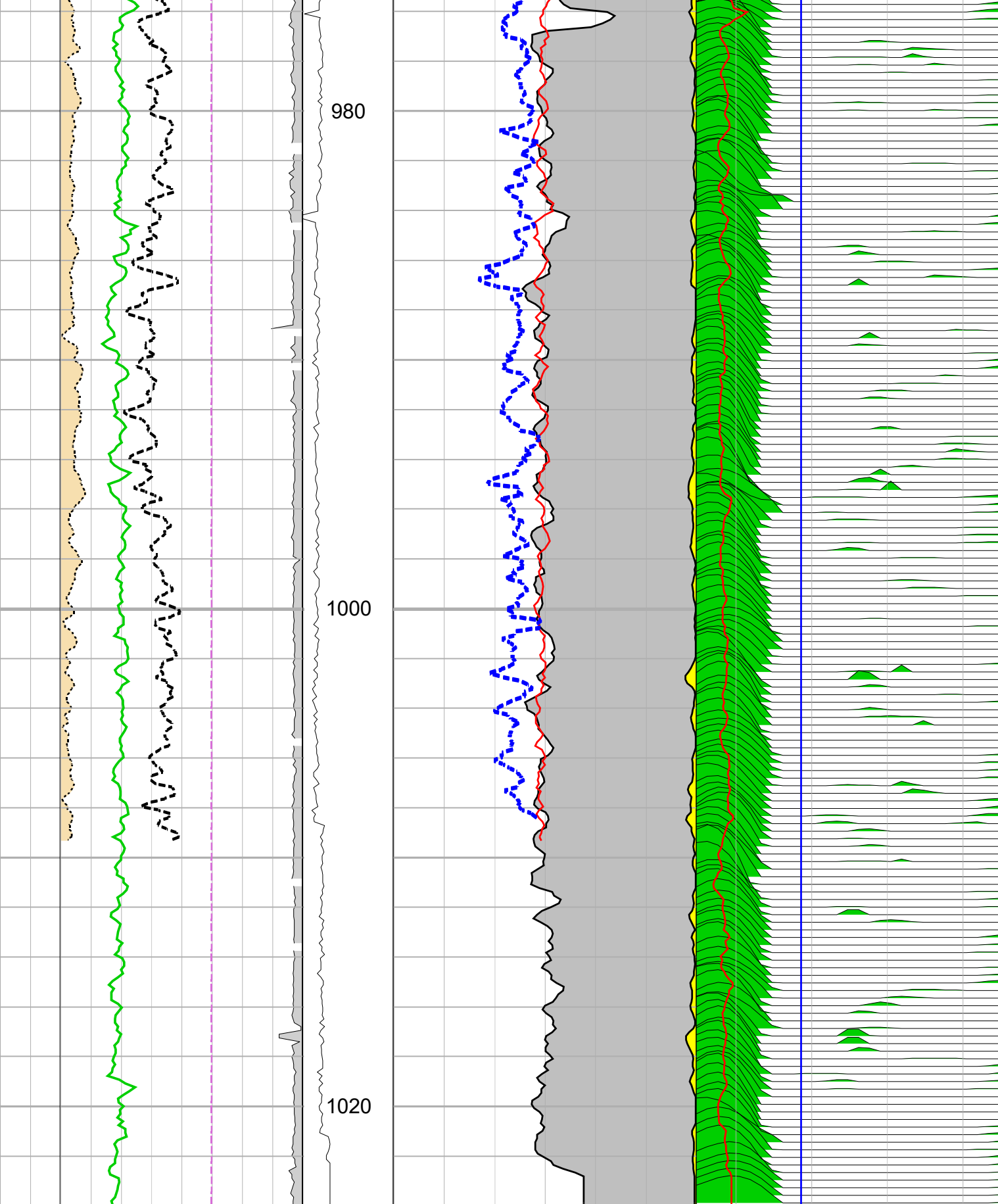
FOLD HERE The well name, location and borehole reference data were furnished by the customer.

All interpretations are opinions based on inferences from electrical or other measurements and we cannot, and do not guarantee the accuracy or correctness of any interpretation, and we shall not, except in the case of gross or willful negligence on our part, be liable or responsible for any loss, costs, damages or expenses incurred or sustained by anyone resulting from any interpretations made by any of our officers, agents or employees. These interpretations are also subject to Clause 4 of our General Terms and Conditions as set out in our current Price Schedule.









ROP		NMR LWD Porosity
0.25 (m/s) 0		1 (m3/m3) 0
Caliper		
-2 (in) 8		BFV
ROP		Free Fluid
Washout		