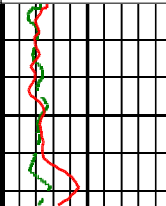
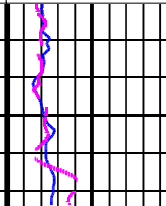
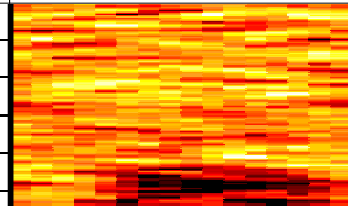
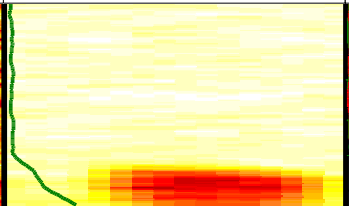
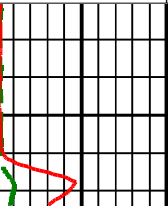
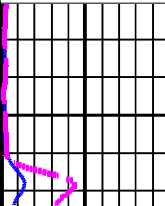
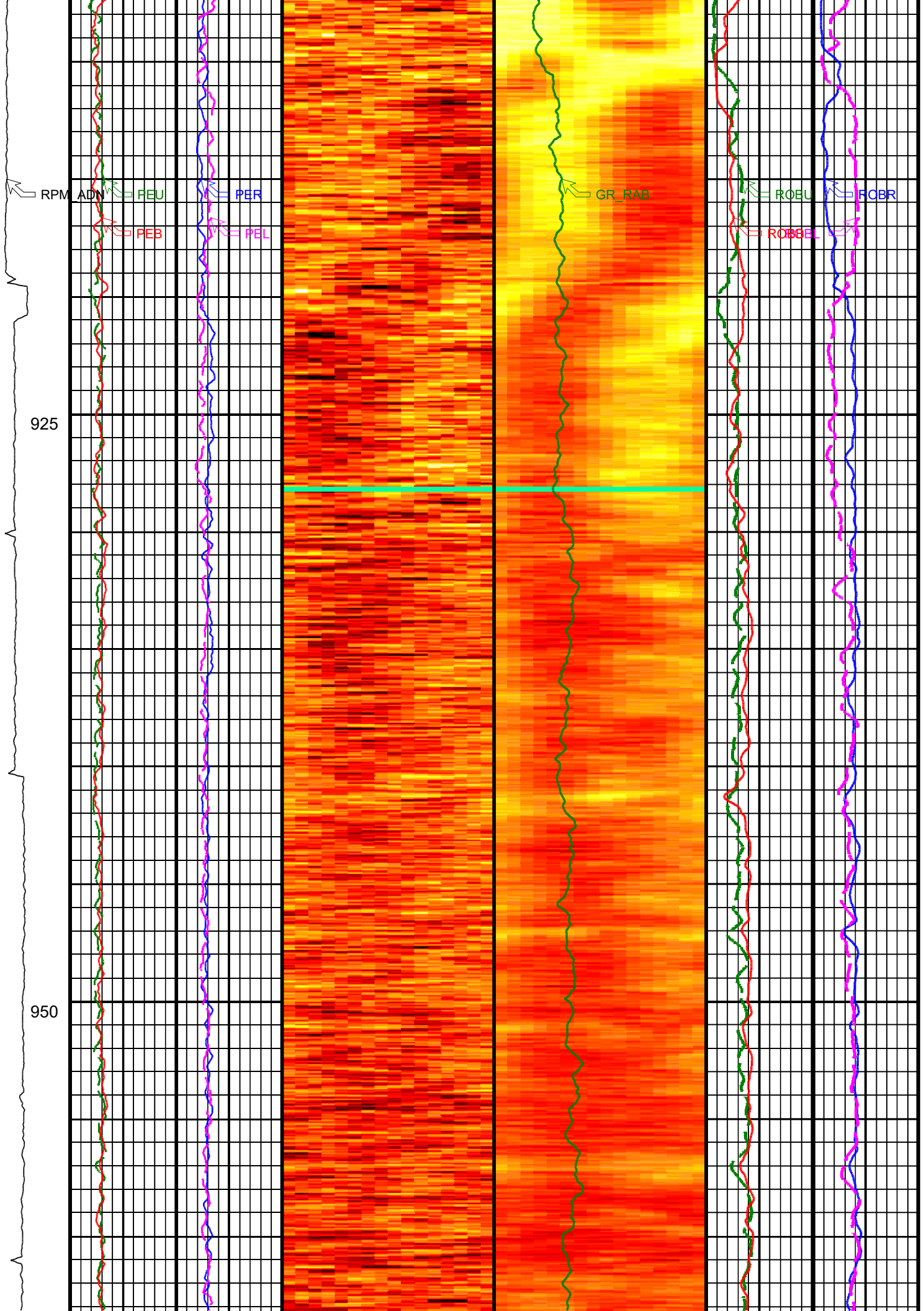
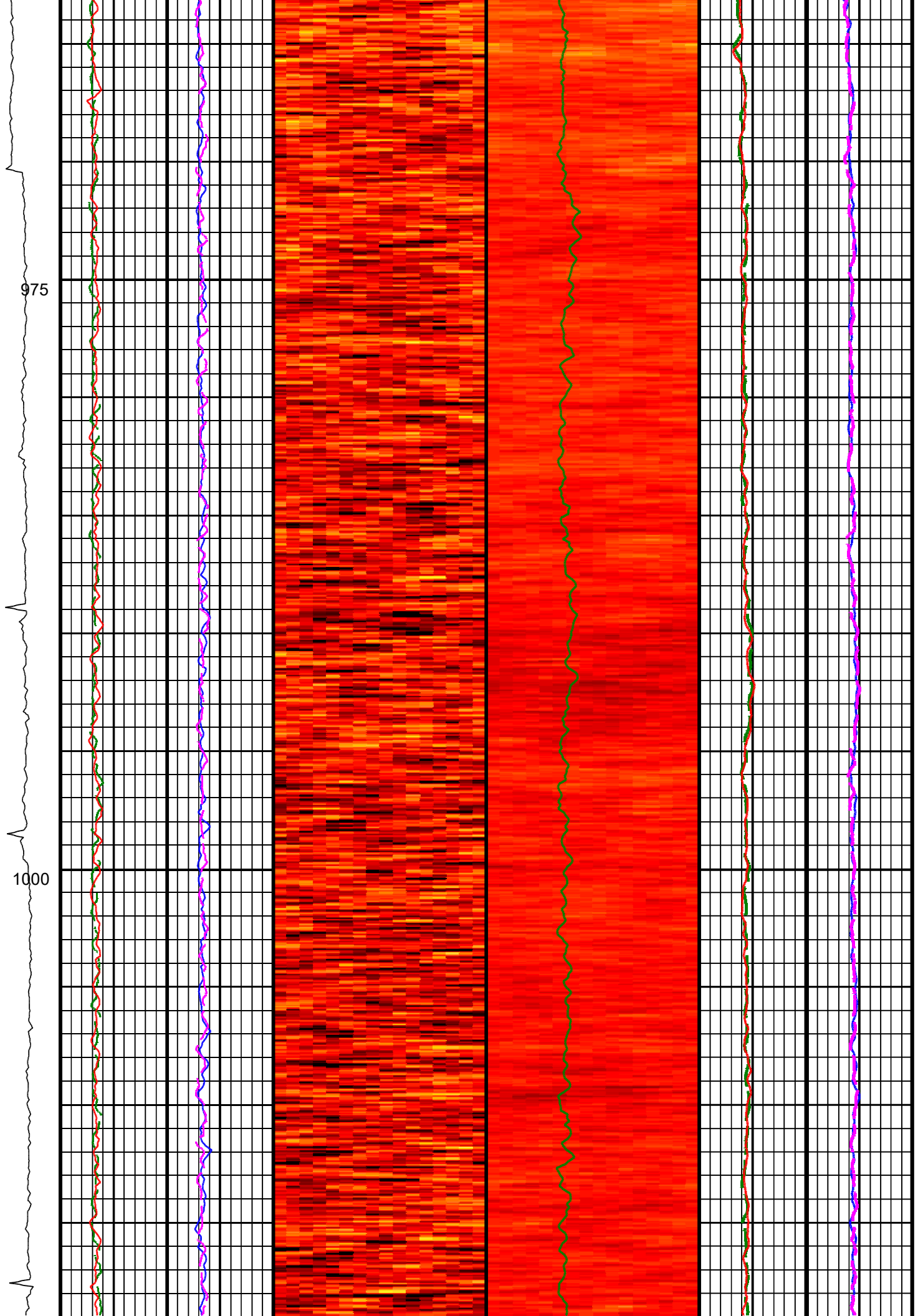
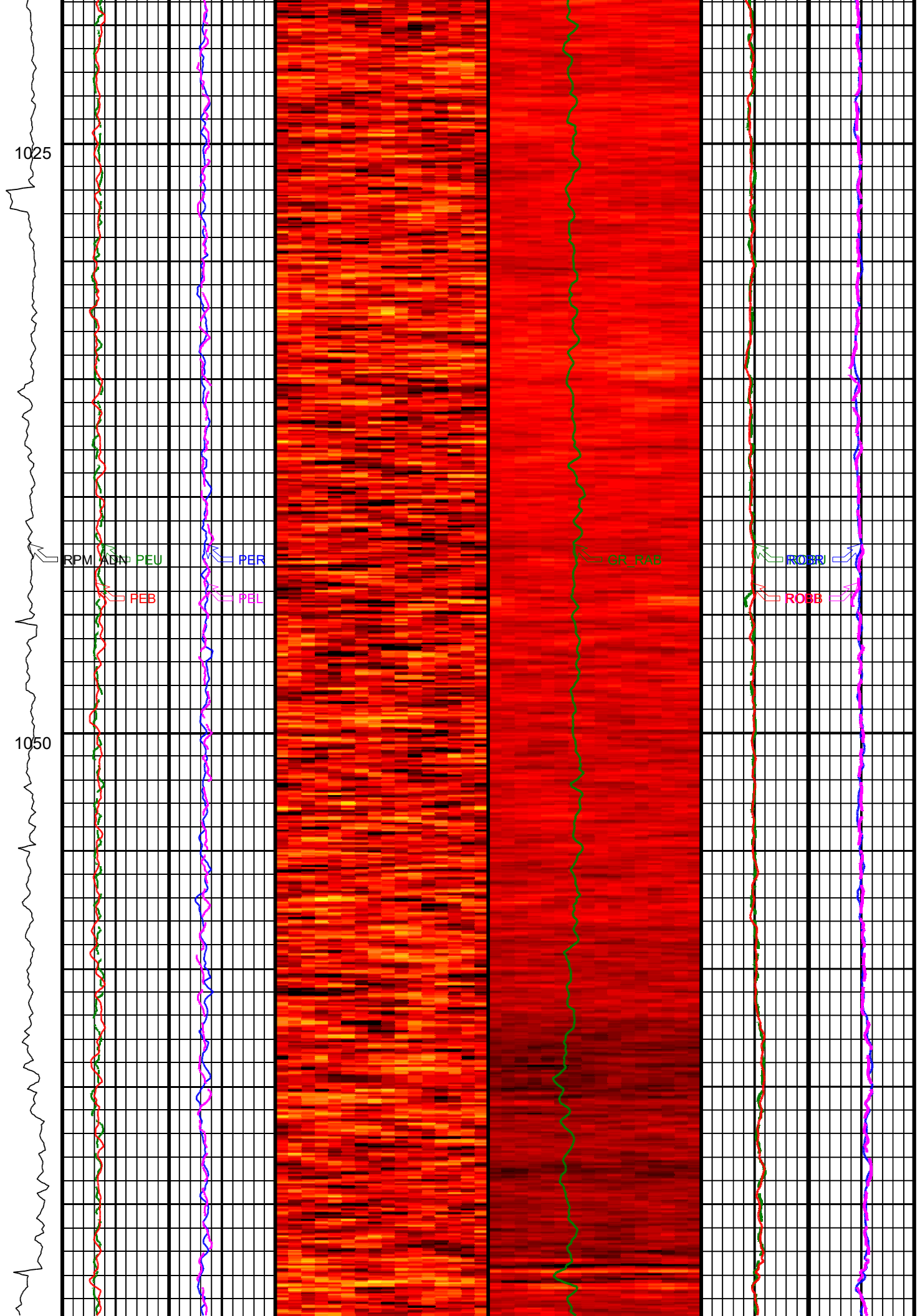


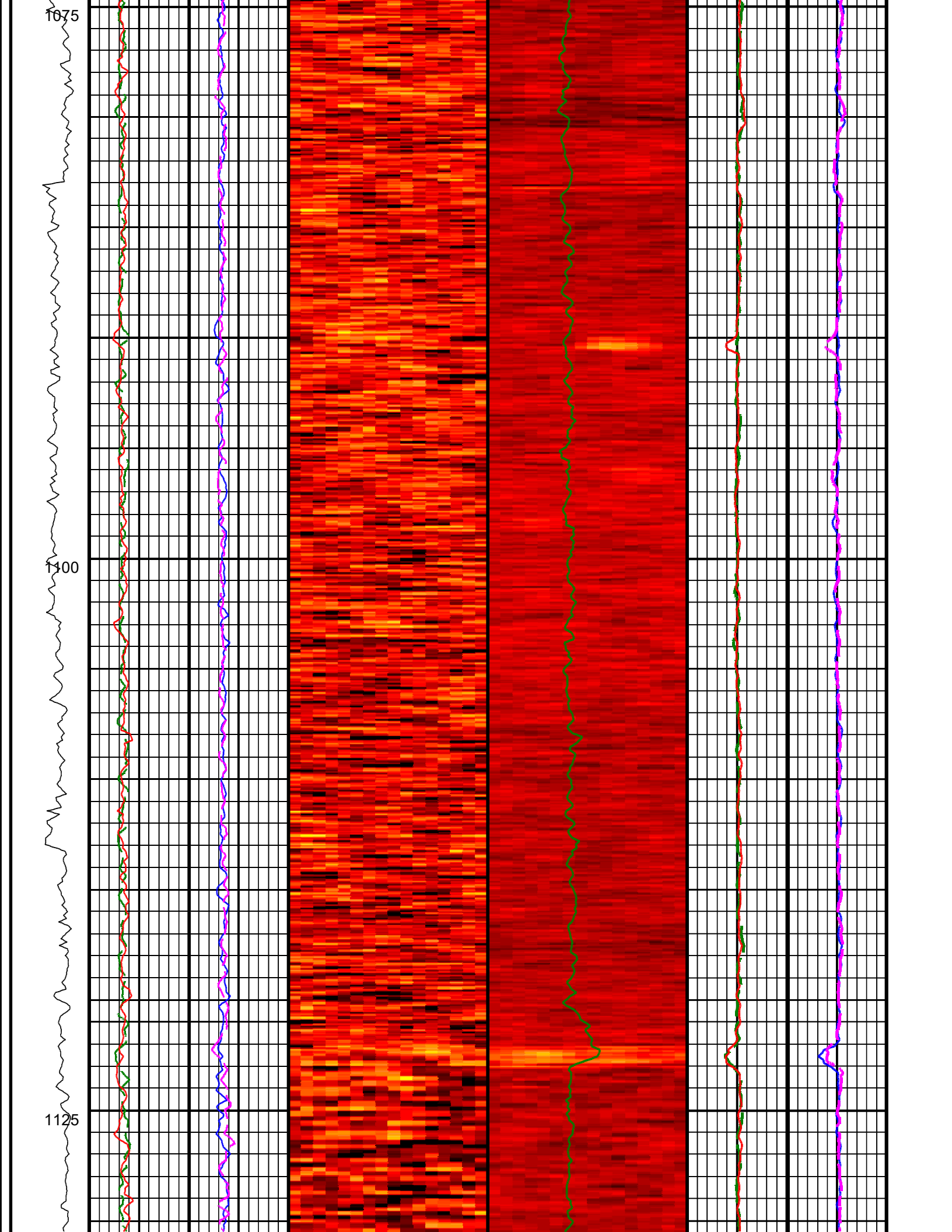
| | |
|--------|------------------------|
| Well: | ODP Leg 204 Site 1244D |
| Field: | Hydrate Ridge |
| Ocean: | Pacific |
| | State: Oregon |

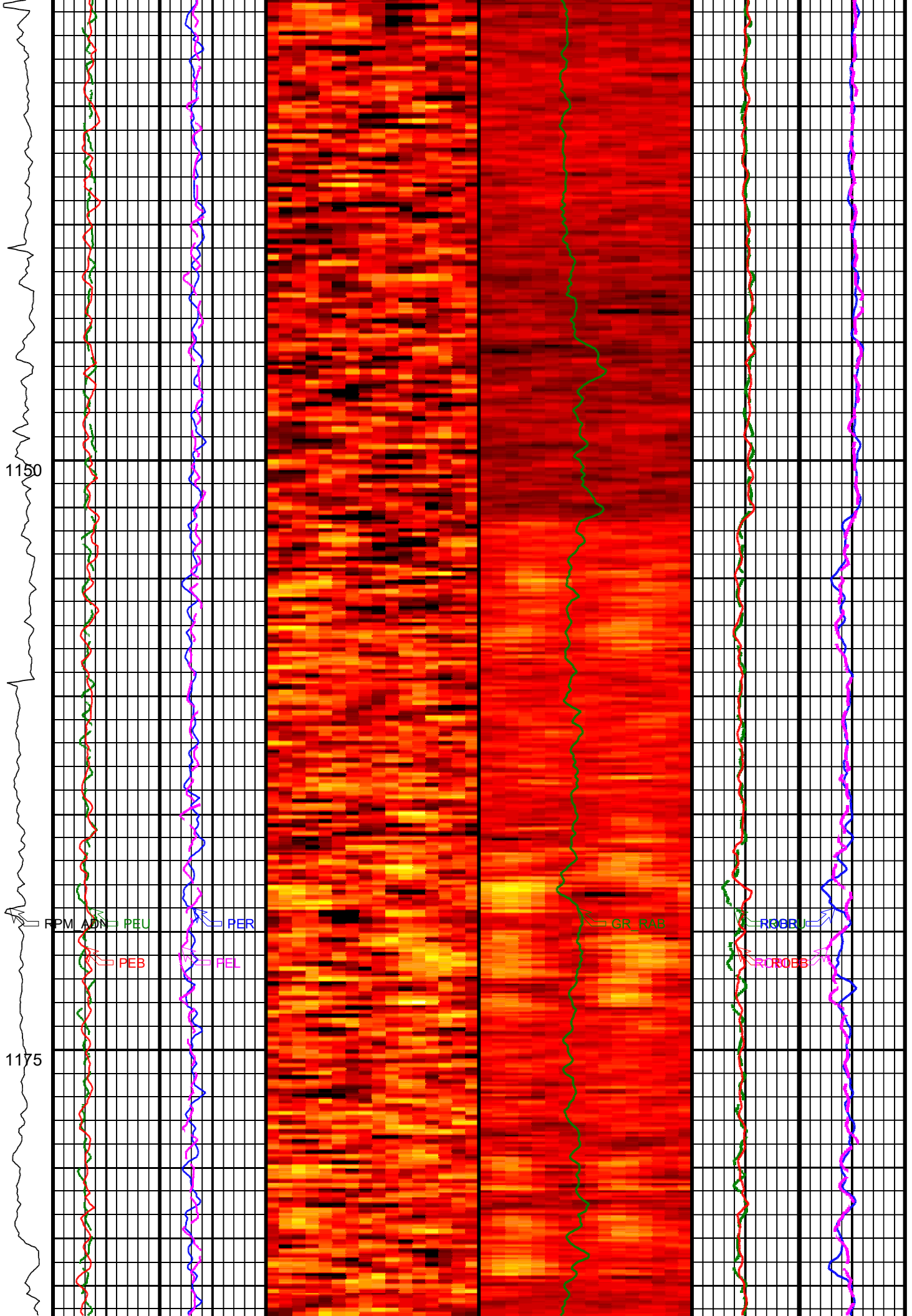
| IDEAL Version: ID7_0C_02 IDF | | | | | | | |
|--|---|---|--|--|---|---|--|
| RAB ADN | | IDEAL Version: ID7_0C_02 IDEAL Version: ID7_0C_02 | | MWD_10 | | IDEAL Version: ID7_0C_02 | |
| Format: V_DEN_NEU_IMAGE | | Vertical Scale: 1:200 | | Graphics File Created: 13-Aug-2002 12:40 | | | |
| | <div>Photoelectric Factor, Bottom (PEB)</div> <div>0 (----) 10</div> | <div>Photoelectric Factor, Left (PEL)</div> <div>0 (----) 10</div> | | <div>Absent 1.081 1.188 1.295 1.402 1.510 1.617 1.724 1.832 1.939 2.046</div> <div>ADN Bulk Density (16-Sector) Image Oriented Top of Hole (U,R,B,L,U) (ROSI) (G/C3)</div> | <div>Bulk Density, Bottom (ROBB)</div> <div>1 (G/C3) 2.65</div> | <div>Bulk Density, Left (ROBL) (G/C3)</div> <div>1 2.65</div> | |
| <div>ADN Rotational Speed (RPM-ADN) (RPM)</div> <div>0 100</div> | <div>Photoelectric Factor, Up (PEU)</div> <div>0 (----) 10</div> | <div>Photoelectric Factor, Right (PER)</div> <div>0 (----) 10</div> | <div>Absent 0.793 1.183 1.573 1.963 2.354 2.744 3.134 3.524 3.915 4.305</div> <div>ADN Photoelectric Factor (16-Sector) Image Oriented Top of Hole (U,R,B,L,U) (PESI) (----)</div> | <div>RAB Gamma Ray (GR_RAB) (GAPI)</div> <div>0 150</div> | <div>Bulk Density, Up (ROBU) (G/C3)</div> <div>1 2.65</div> | <div>Bulk Density, Right (ROBR) (G/C3)</div> <div>1 2.65</div> | |
| |  |  |  |  |  |  | |

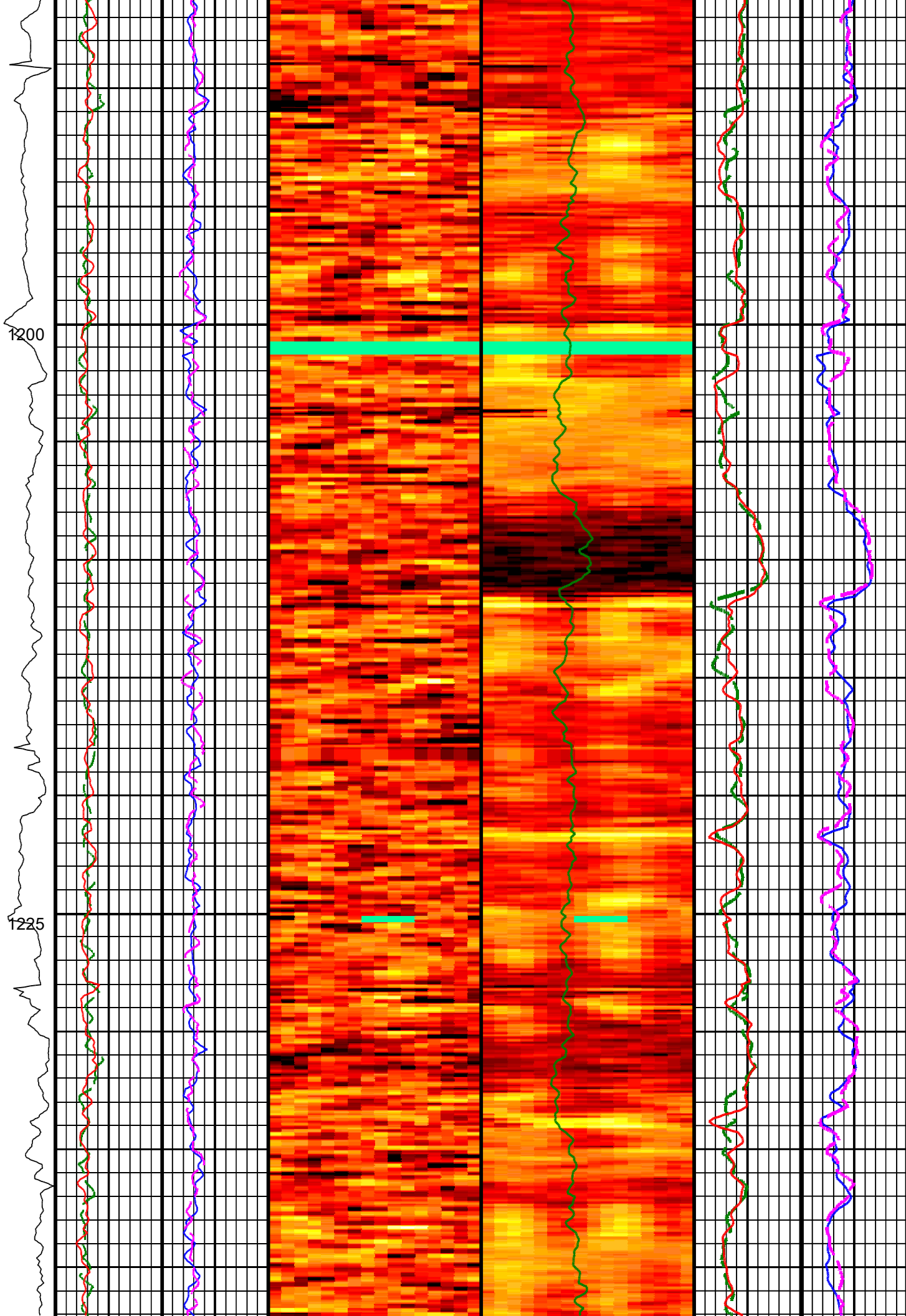


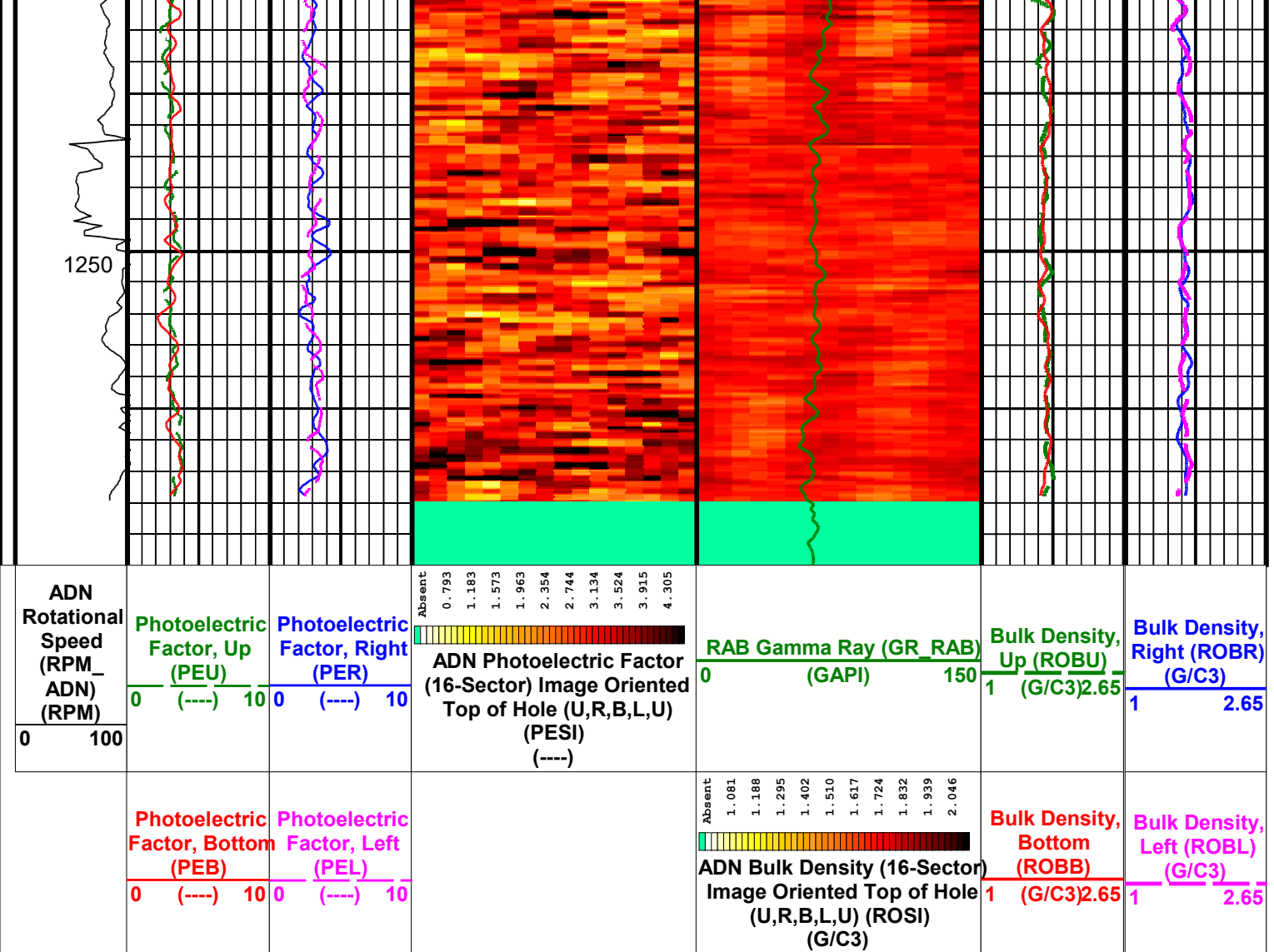












IDEAL Version: ID7_0C_02

IDF

RAB
ADN

IDEAL Version: ID7_0C_02
IDEAL Version: ID7_0C_02

MWD_10

IDEAL Version: ID7_0C_02

IDEAL Version: ID7_0C_02

IDF

RAB
ADN

IDEAL Version: ID7_0C_02
IDEAL Version: ID7_0C_02

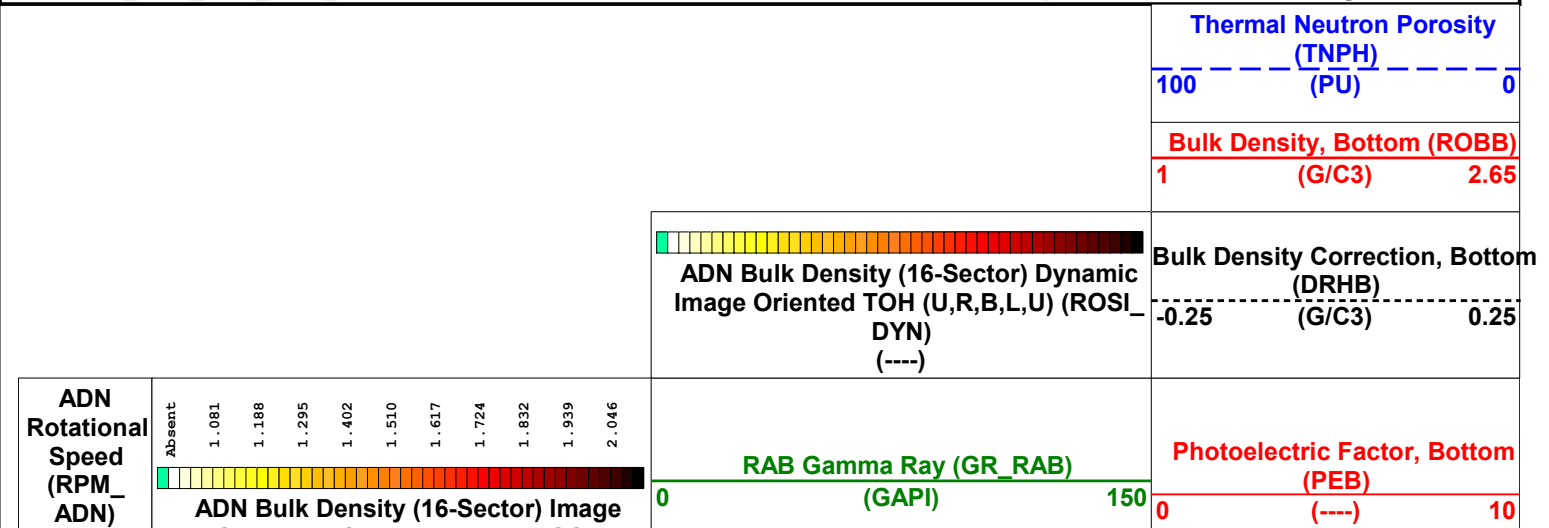
MWD_10

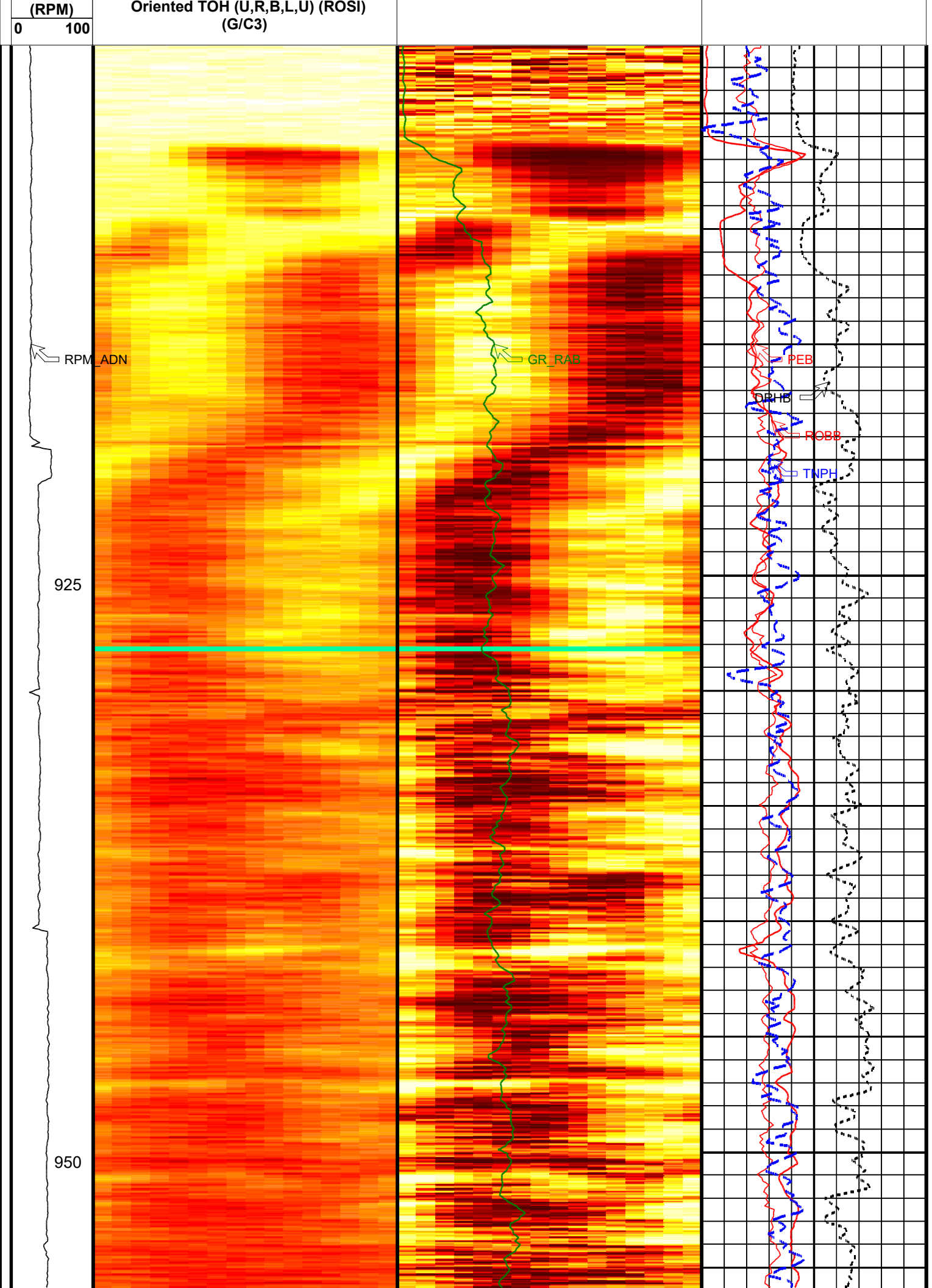
IDEAL Version: ID7_0C_02

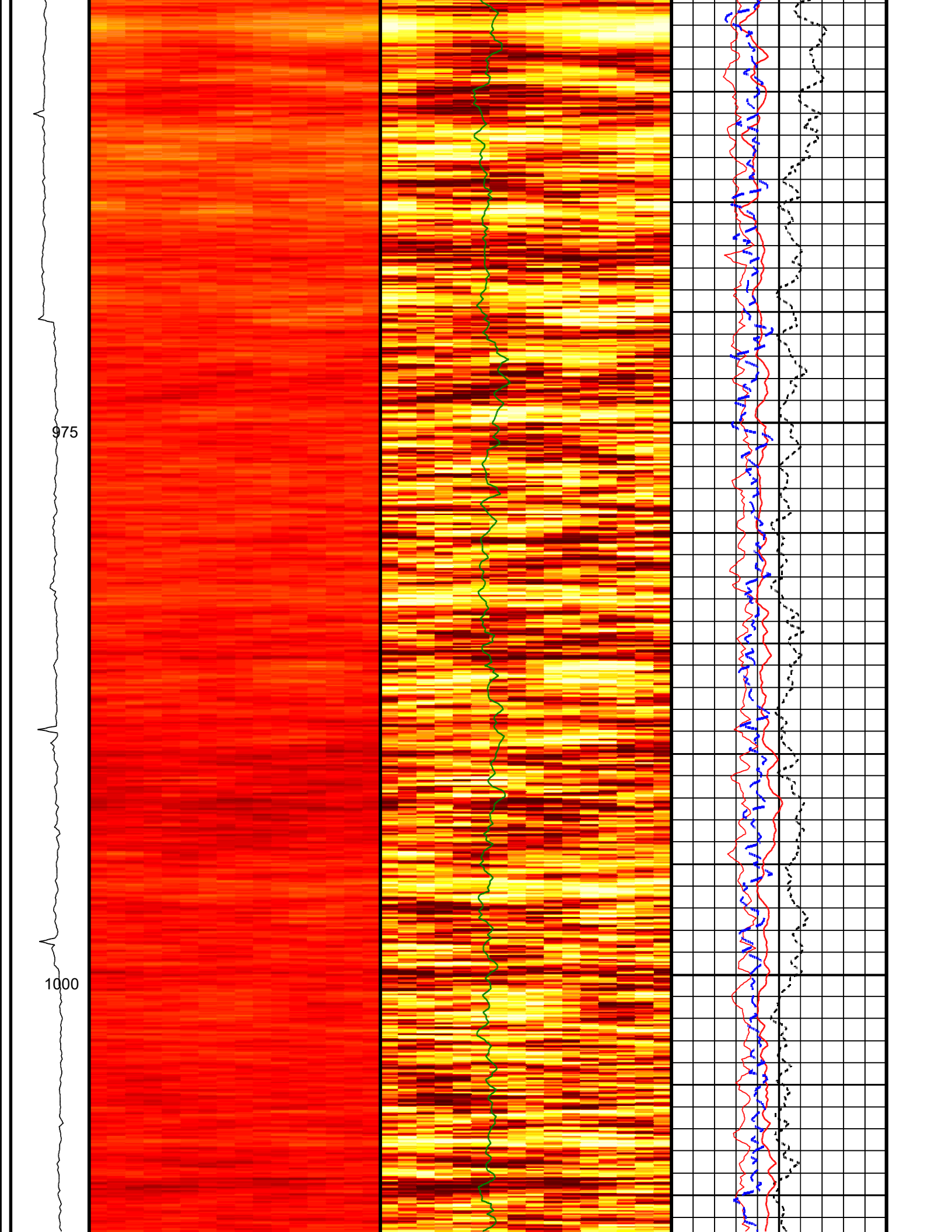
Format: V_DEN_NEU_DYN_IMAGE

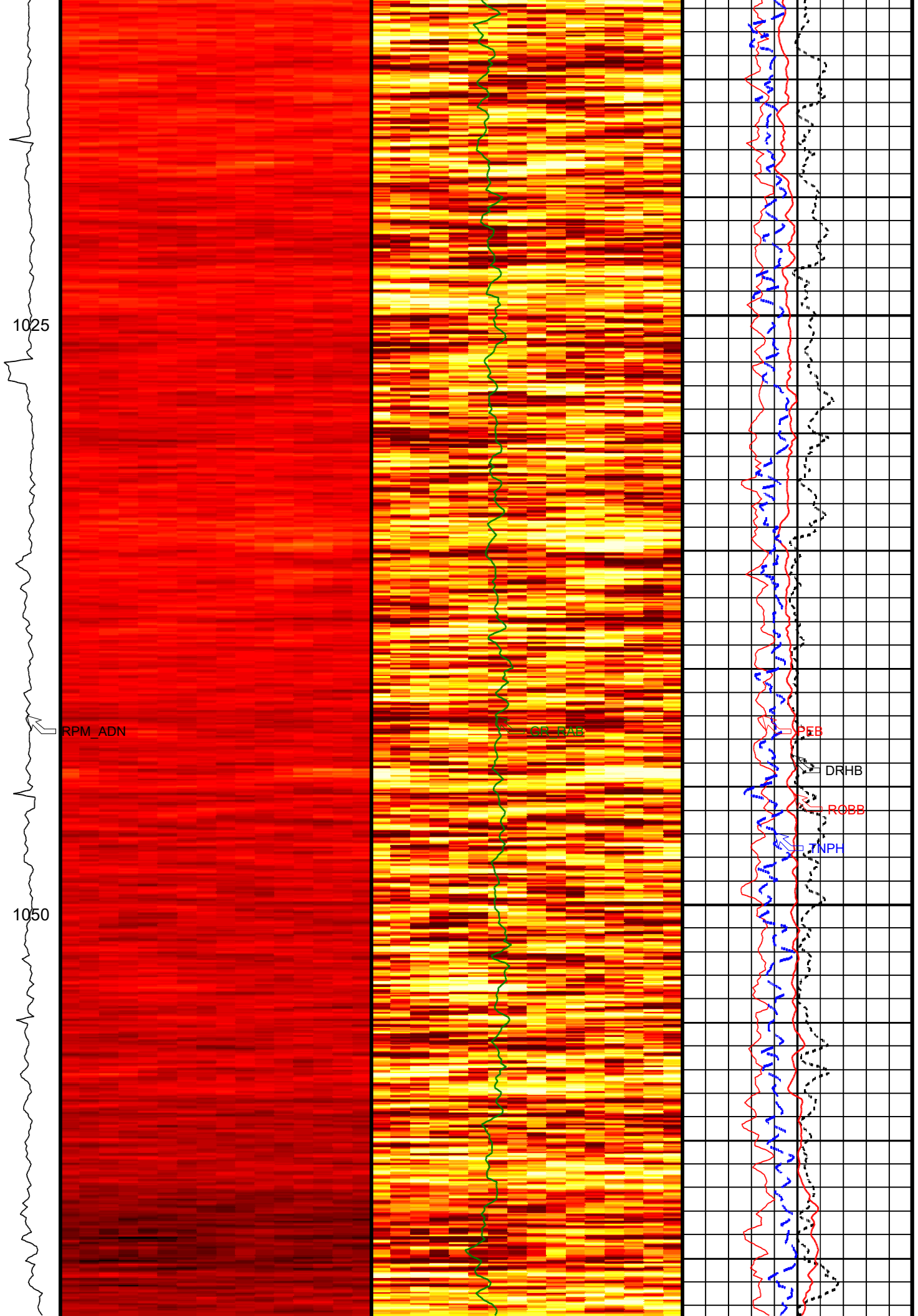
Vertical Scale: 1:200

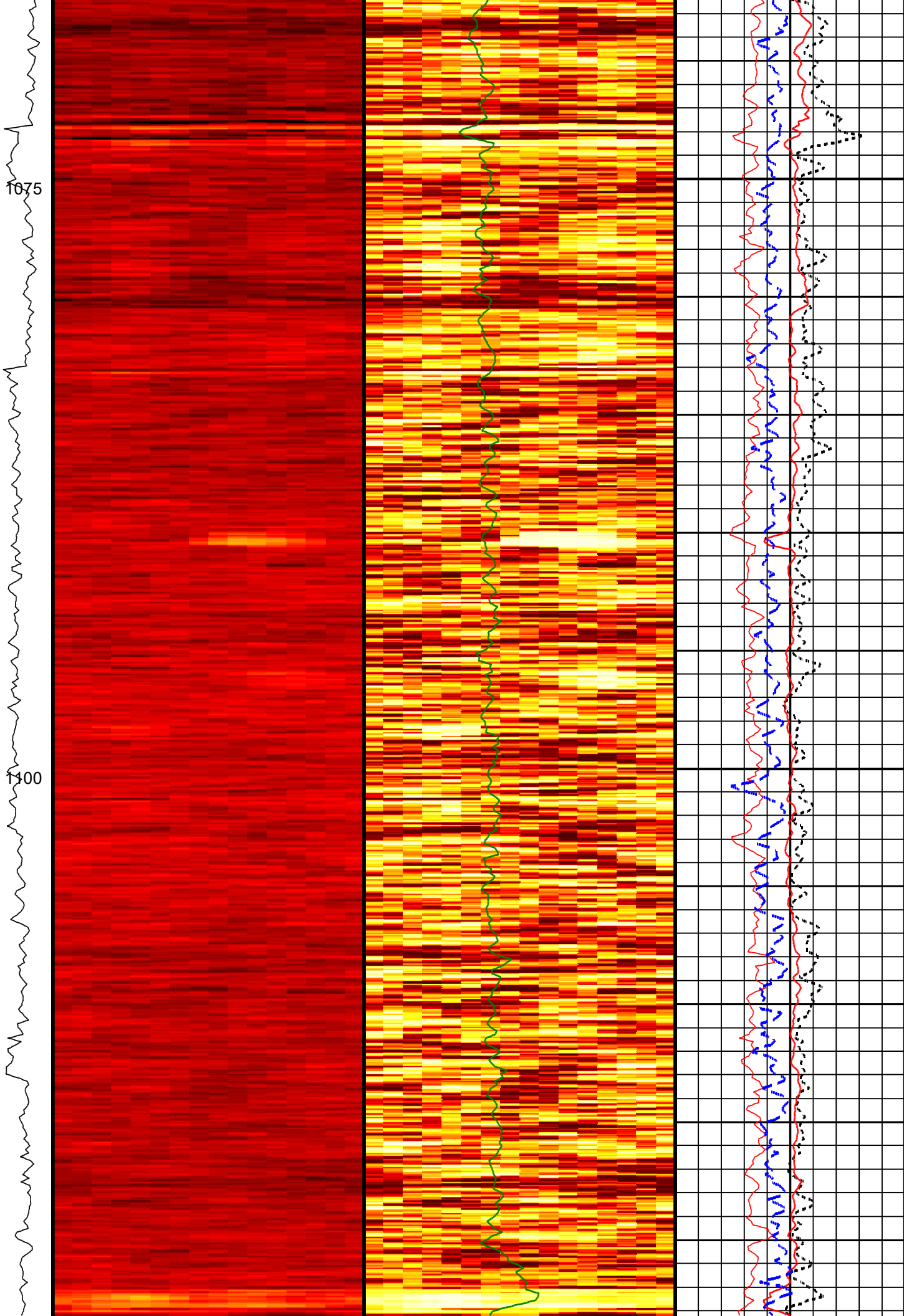
Graphics File Created: 13-Aug-2002 12:39











1125

1150

1175

RPM_ADN

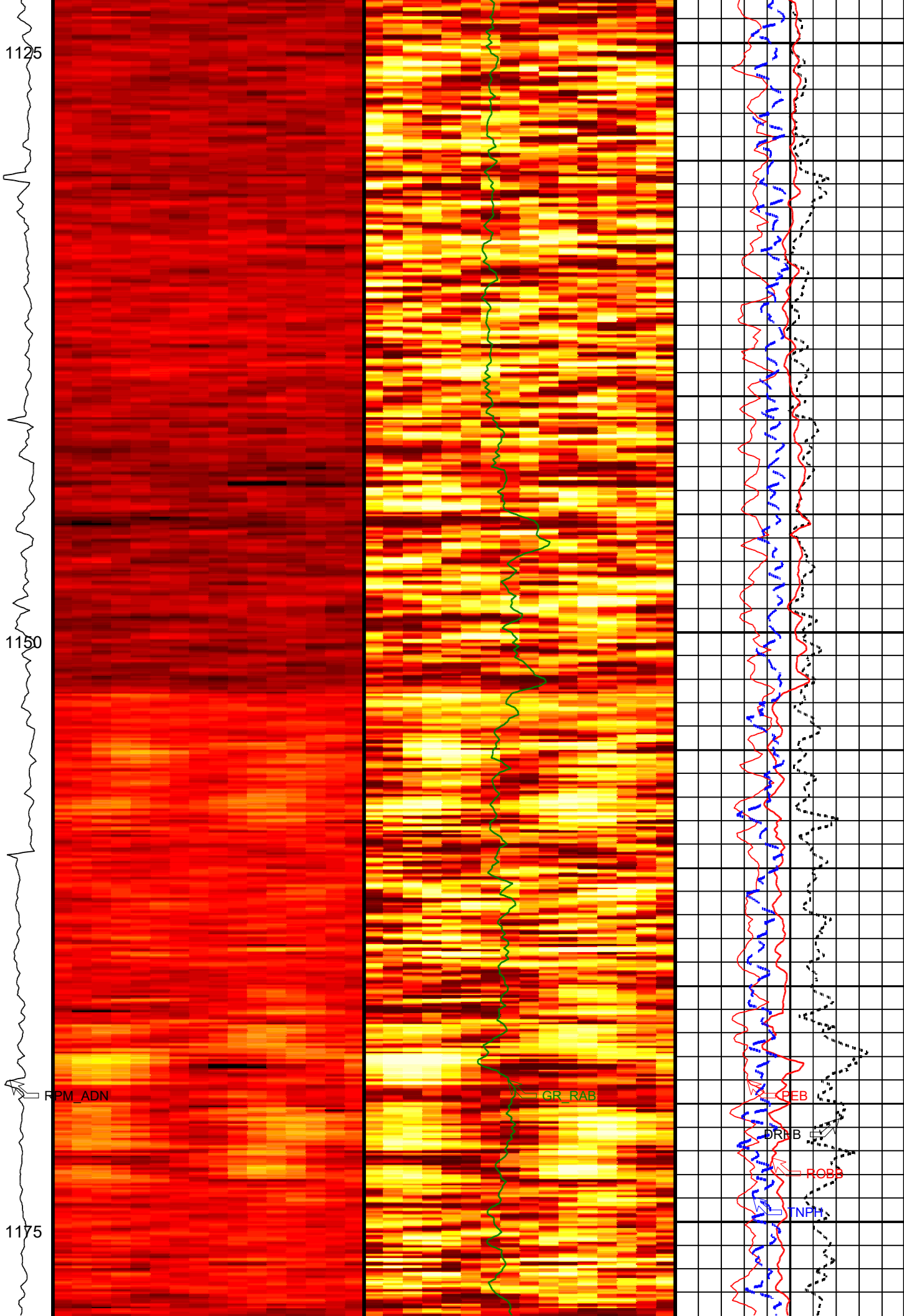
GR_RAB

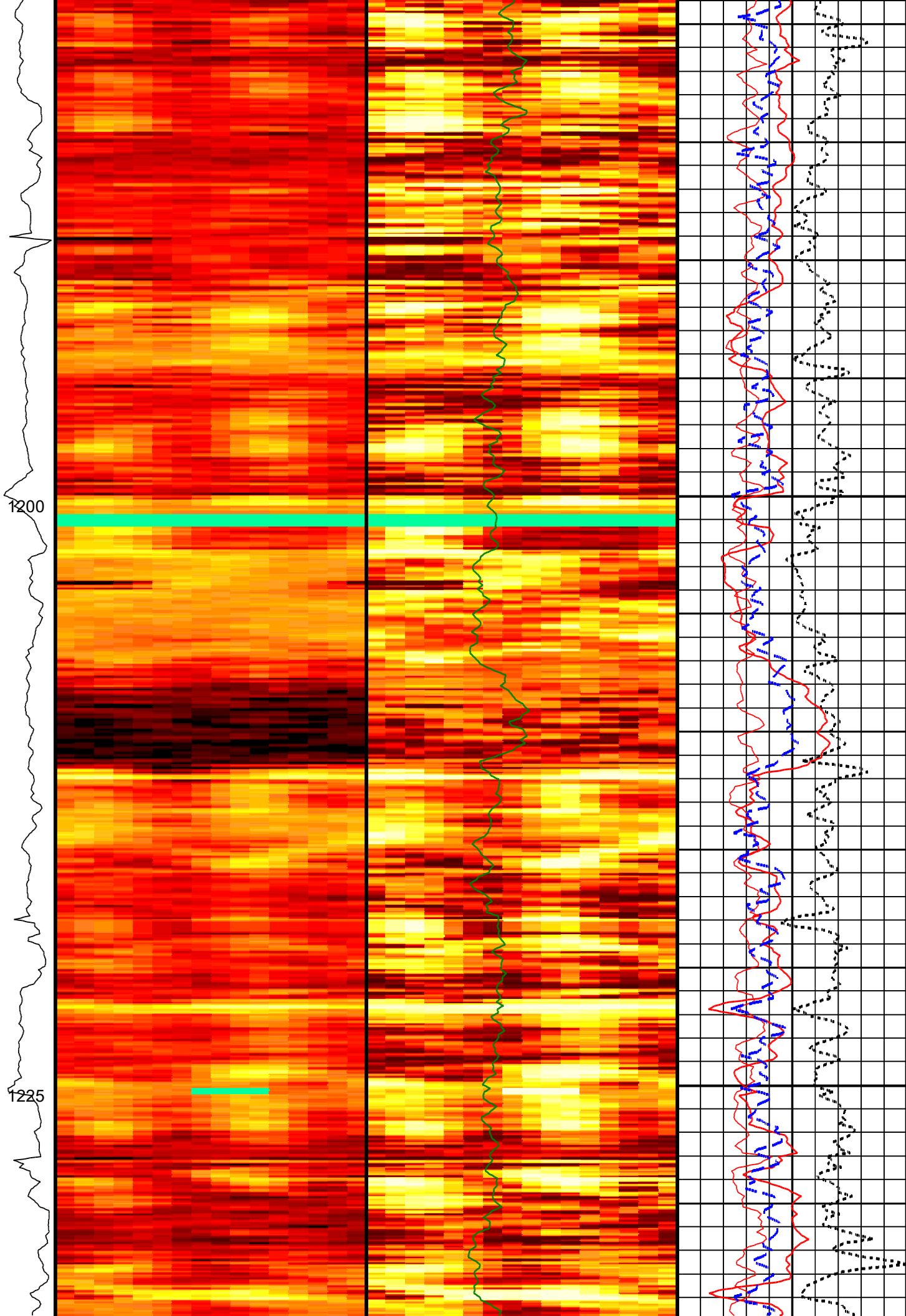
REB

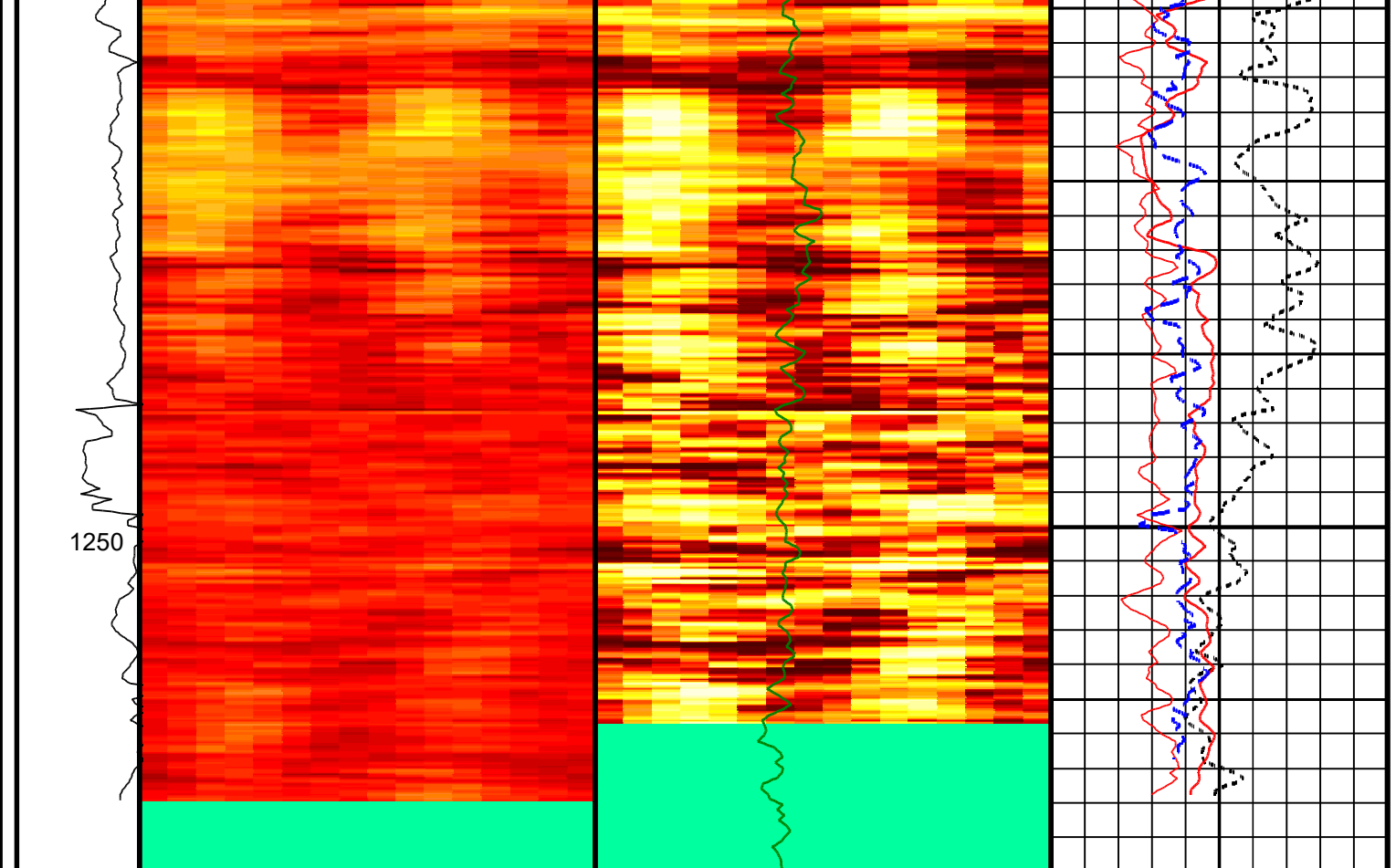
DRB

ROB

TNPH







| | | | |
|--|--|---|---|
| <div>ADN Rotational Speed (RPM_ ADN) (RPM)</div> <div>0100</div> | <div>Absent 1.081 1.188 1.295 1.402 1.510 1.617 1.724 1.832 1.939 2.046</div> <div>ADN Bulk Density (16-Sector) Image Oriented TOH (U,R,B,L,U) (ROSI) (G/C3)</div> | <div>RAB Gamma Ray (GR_RAB) (GAPI)</div> <div>0150</div> | <div>Photoelectric Factor, Bottom (PEB) (----)</div> <div>010</div> |
| | | <div>ADN Bulk Density (16-Sector) Dynamic Image Oriented TOH (U,R,B,L,U) (ROSI_ DYN) (----)</div> | <div>Bulk Density Correction, Bottom (DRHB) (G/C3)</div> <div>-0.250.25</div> |
| | | | <div>Bulk Density, Bottom (ROBB) (G/C3)</div> <div>12.65</div> |
| | | | <div>Thermal Neutron Porosity (TNPH) (PU)</div> <div>1000</div> |

IDEAL Version: ID7_OC_02
IDF

RAB
ADN

IDEAL Version: ID7_OC_02
IDEAL Version: ID7_OC_02

MWD_10

IDEAL Version: ID7_OC_02

Company: Lamont Doherty

Well: ODP Leg 204 Site 1244D

Field: Hydrate Ridge

Ocean: Pacific

State: Oregon

VISION Azimuthal Density and Neutron - Image

Schlumberger

1 cm : 2 m

Measured Depth