

COMPANY: Lamont Doherty

WELL: ODP Leg 200, Site 1224F

FIELD: H2O

COUNTY: Joides Resolution STATE: Pacific Ocean

Formation Micro-Scanner



COUNTY: Joides Resolution  
Field: H2O  
Location: Joides Resolution  
Well: ODP Leg 200, Site 1224F  
Company: Lamont Doherty

LOCATION		GROUND LEVEL	
H2O		Elev.: K.B. 11.3 m	
		G.L. -4978 m	
		D.F. 11 m	
Permanent Datum:		Elev.: 0 m	
Log Measured From:	DES		above Perm. Datum
Drilling Measured From:	DES		
API Serial No.	Max. Hole Devi.	Longitude 141 58.7580 W	Latitude 27 53.3630 N

Logging Date	Run 1	Run 2	Run
Run Number			
Depth Driller			
Schlumberger Depth			
Bottom Log Interval			
Top Log Interval			
Casing Driller Size @ Depth			
Casing Schlumberger			
Bit Size			
Type Fluid In Hole			
Density			
Fluid Loss			
PH			
Source Of Sample			
RM @ Measured Temperature			
RMF @ Measured Temperature			
RMC @ Measured Temperature			
Source RMF			
RM @ MRT			
RMF @ MRT			
Maximum Recorded Temperatures			
Circulation Stopped			
Time			
Logger On Bottom			
Time			
Unit Number			
Location			
Recorded By			
Witnessed By			

Run Number	1		
Depth Driller	5152.5 m		
Schlumberger Depth	5152 m		
Bottom Log Interval	5150 m		
Top Log Interval	4999.8 m		
Casing Driller Size @ Depth	0.000 in	@	5012.5 m
Casing Schlumberger	5011 m		
Bit Size	9.875 in		
Type Fluid In Hole	Sepiolite		
Density	1.066 g/cm3		
Fluid Loss			
PH			
Source Of Sample			
RM @ Measured Temperature		@	
RMF @ Measured Temperature		@	
RMC @ Measured Temperature		@	
Source RMF			
RM @ MRT		@	
RMF @ MRT		@	
Maximum Recorded Temperatures			
Circulation Stopped	1/20/02		0100
Time			
Logger On Bottom	1/21/02		See Log
Time			
Unit Number	99		Houston
Location			
Recorded By	Steve Kittredge		
Witnessed By	Yue-Feng Sun, Hartley Hoskins		

**DISCLAIMER**  
 THE USE OF AND RELIANCE UPON THIS RECORDED-DATA BY THE HEREIN NAMED COMPANY (AND ANY OF ITS AFFILIATES, PARTNERS, REPRESENTATIVES, AGENTS, CONSULTANTS AND EMPLOYEES) IS SUBJECT TO THE TERMS AND CONDITIONS AGREED UPON BETWEEN SCHLUMBERGER AND THE COMPANY, INCLUDING: (a) RESTRICTIONS ON USE OF THE RECORDED-DATA; (b) DISCLAIMERS AND WAIVERS OF WARRANTIES AND REPRESENTATIONS REGARDING COMPANY'S USE OF AND RELIANCE UPON THE RECORDED-DATA; AND (c) CUSTOMER'S FULL AND SOLE RESPONSIBILITY FOR ANY INFERENCE DRAWN OR DECISION MADE IN CONNECTION WITH THE USE OF THIS RECORDED-DATA.

**OTHER SERVICES1**  
 OS1: DITE/HLDT  
 OS2: APS/HNGS  
 OS3:  
 OS4:  
 OS5:

**OTHER SERVICES2**  
 OS1:  
 OS2:  
 OS3:  
 OS4:  
 OS5:

**REMARKS: RUN NUMBER 1**  
 Hole Core with RCB.  
 All depths in Meters Below Rig Floor (MBRF).  
 Seas were 8-10 ft.  
 WHC was run.  
 Sea Floor at 4978 MBRF.  
 Total Depth Driller- 5152.5 MBRF.  
 Total Depth Logger- 5152 MBRF.  
 Drill Pipe Driller- 5012.5 MBRF.  
 Drill Pipe Logger- 5011 MBRF.  
 Pass #1 DSI Modes- Lower Dipole and P&S.  
 Pass #2 DSI Modes- Cross Dipole only.  
 Pass #3 DSI Modes- Upper Dipole, Stonely, P&S Medium Frequency.

**REMARKS: RUN NUMBER 2**

**RUN 1**

SERVICE ORDER #:  
 PROGRAM VERSION: 9C2-303  
 FLUID LEVEL:

**RUN 2**

SERVICE ORDER #:  
 PROGRAM VERSION:  
 FLUID LEVEL:

LOGGED INTERVAL	START	STOP

LOGGED INTERVAL	START	STOP

## EQUIPMENT DESCRIPTION

**RUN 1**

**SURFACE EQUIPMENT**

GSR-U  
 WITM (DTS)-A

**RUN 2**

**DOWNHOLE EQUIPMENT**

LEH-QT 33.31  
 LEH-QT 1726  
 DTC-H 32.42  
 ECH-KC 9350  
 AH-MGT 31.51  
 AH-MGT

CTEM  
TelStatus  
ToolStatu

32.14  
31.51

DSST-B  
 SPAC-B 18  
 ECH-SD 18  
 SMDR-BD 8070  
 SSIJ-BA 65  
 SMDX-AA 8026

29.20

PWF — 13.65

AH-MCD  
AH-MCD

13.65

DTA-A  
ECH-KE 8455

11.52

NGT-C  
 NGD-A 1720  
 NGH-B 1721  
 NGC-C 1731  
 NGCH-A 1733

Detector

— 9.92

10.30

MEST-B  
 MEAH-B 701  
 MEAC-A 833  
 MEPH-A 701  
 GPIC-A 840  
 MEPC-AB 702  
 MEDS-B 702

7.68

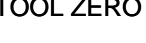
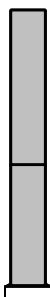
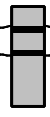
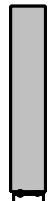
MEDR MEAC  
 MEPC MEDS-B  
 HV DF  
 Tension GPIT

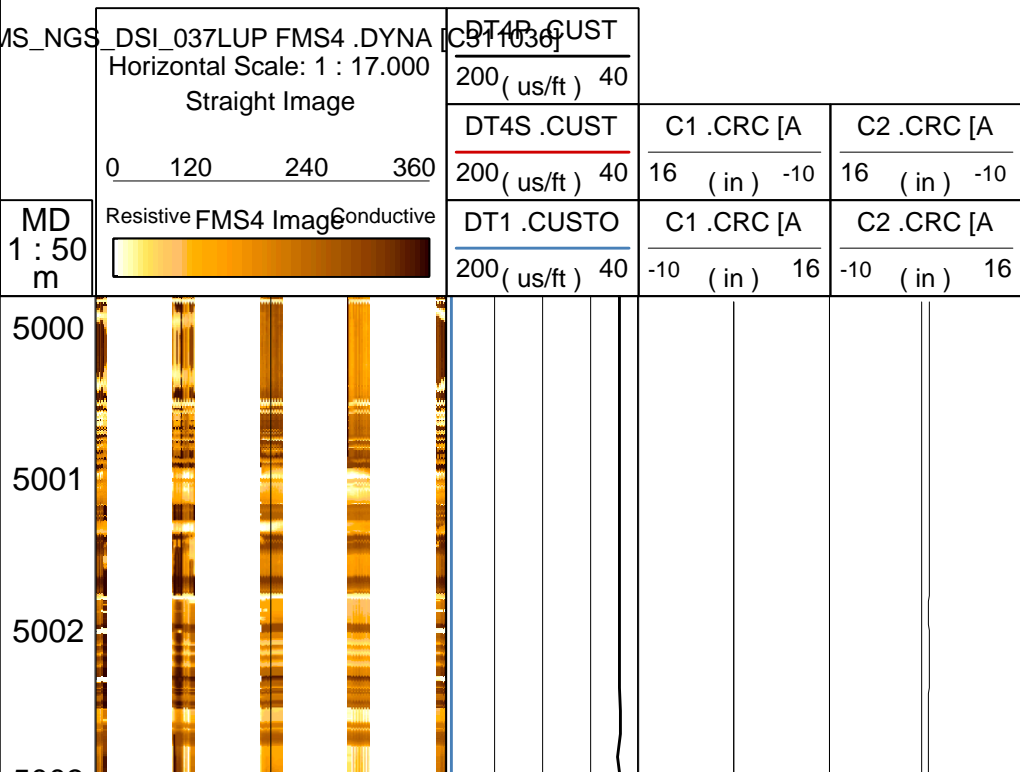
0.46

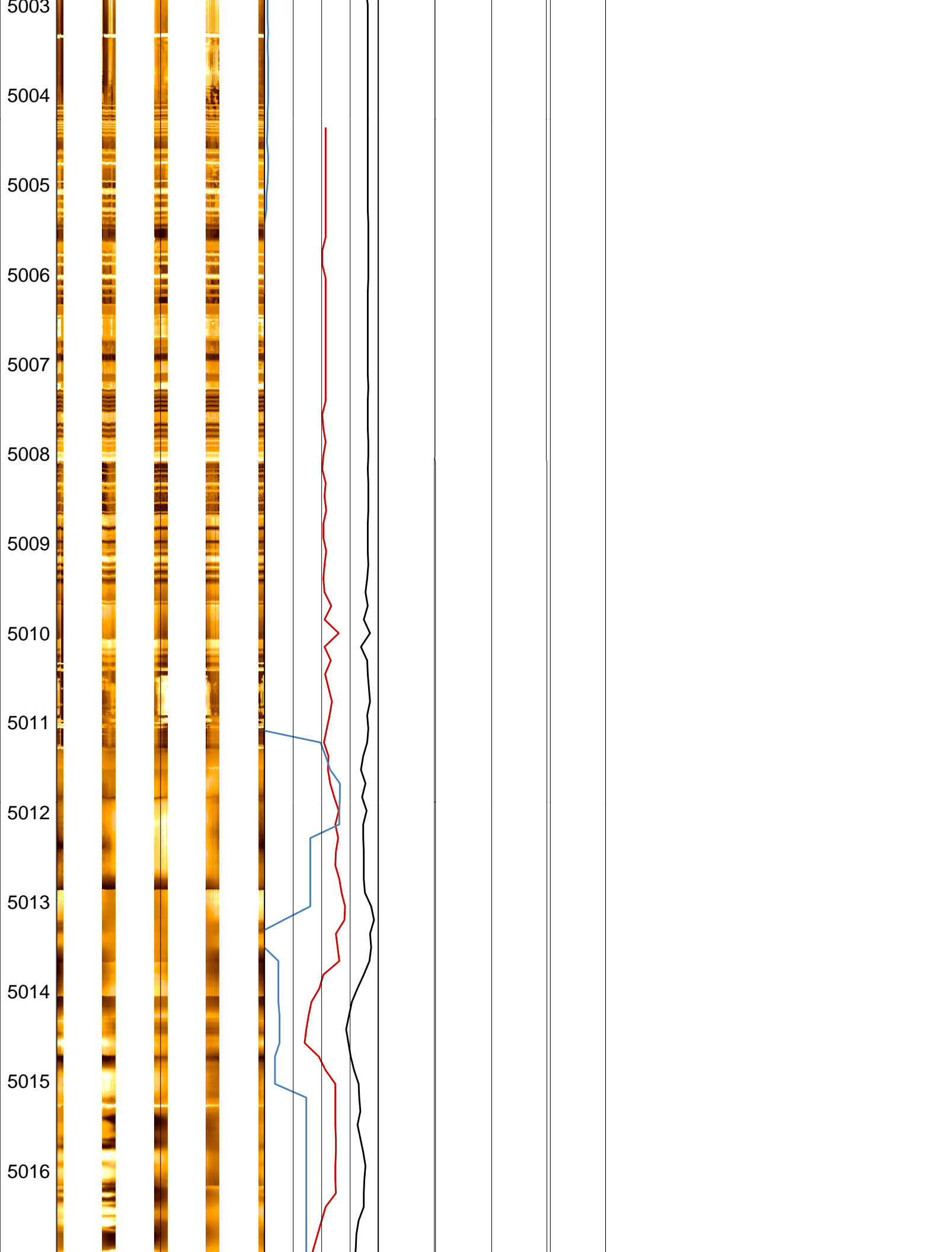
0.00

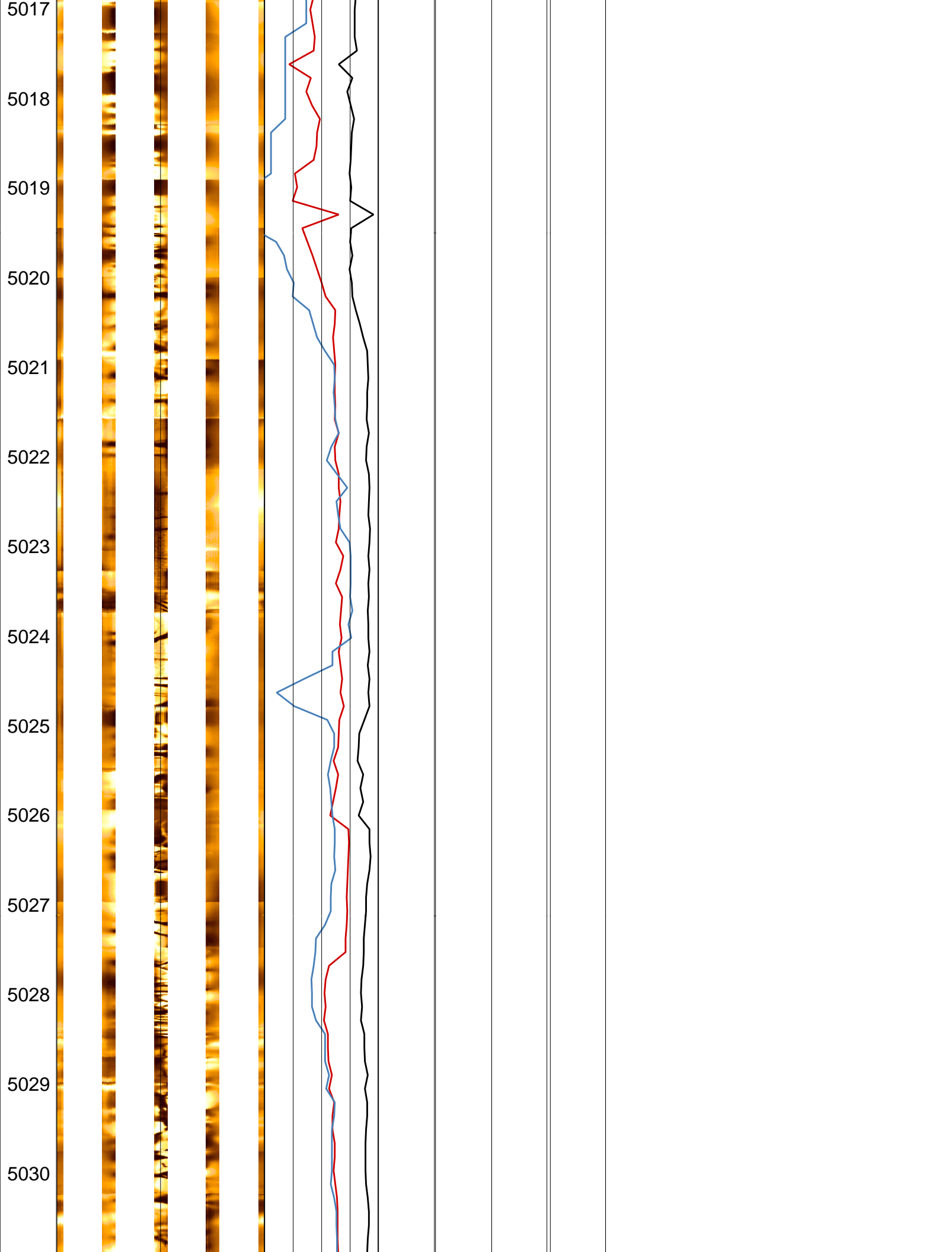
TOOL ZERO

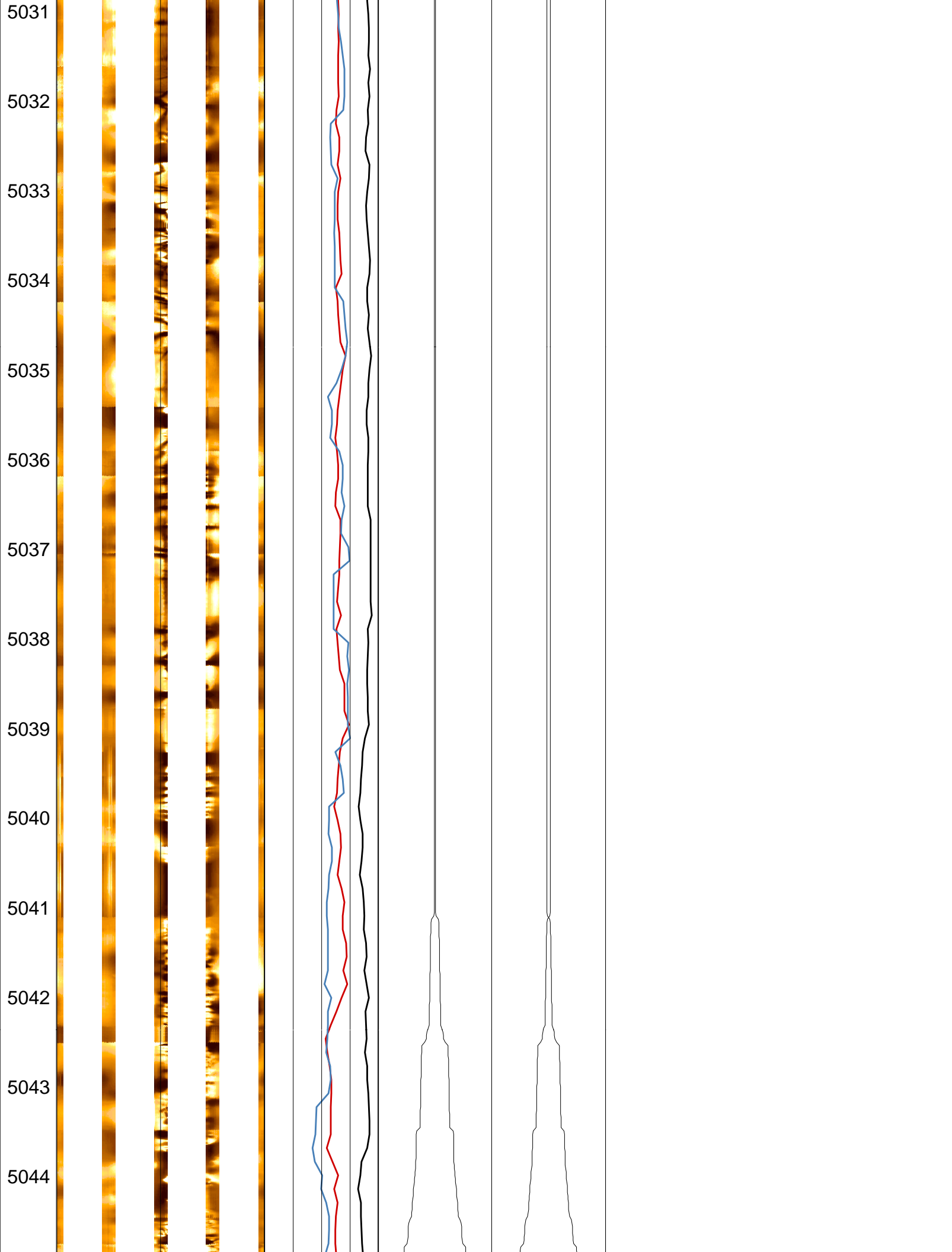
MAXIMUM STRING DIAMETER 4.50 IN  
 MEASUREMENTS RELATIVE TO TOOL ZERO  
 ALL LENGTHS IN METERS

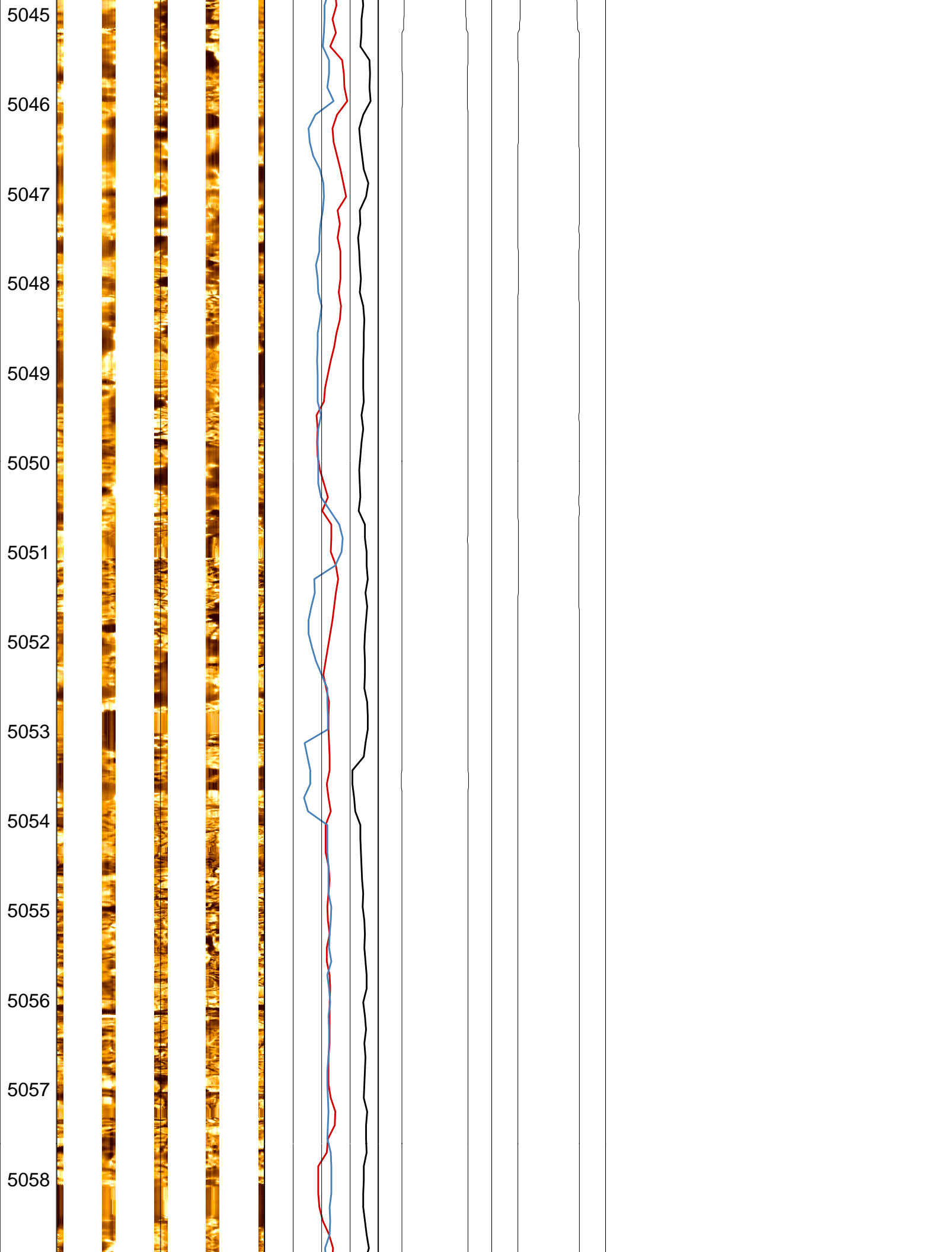




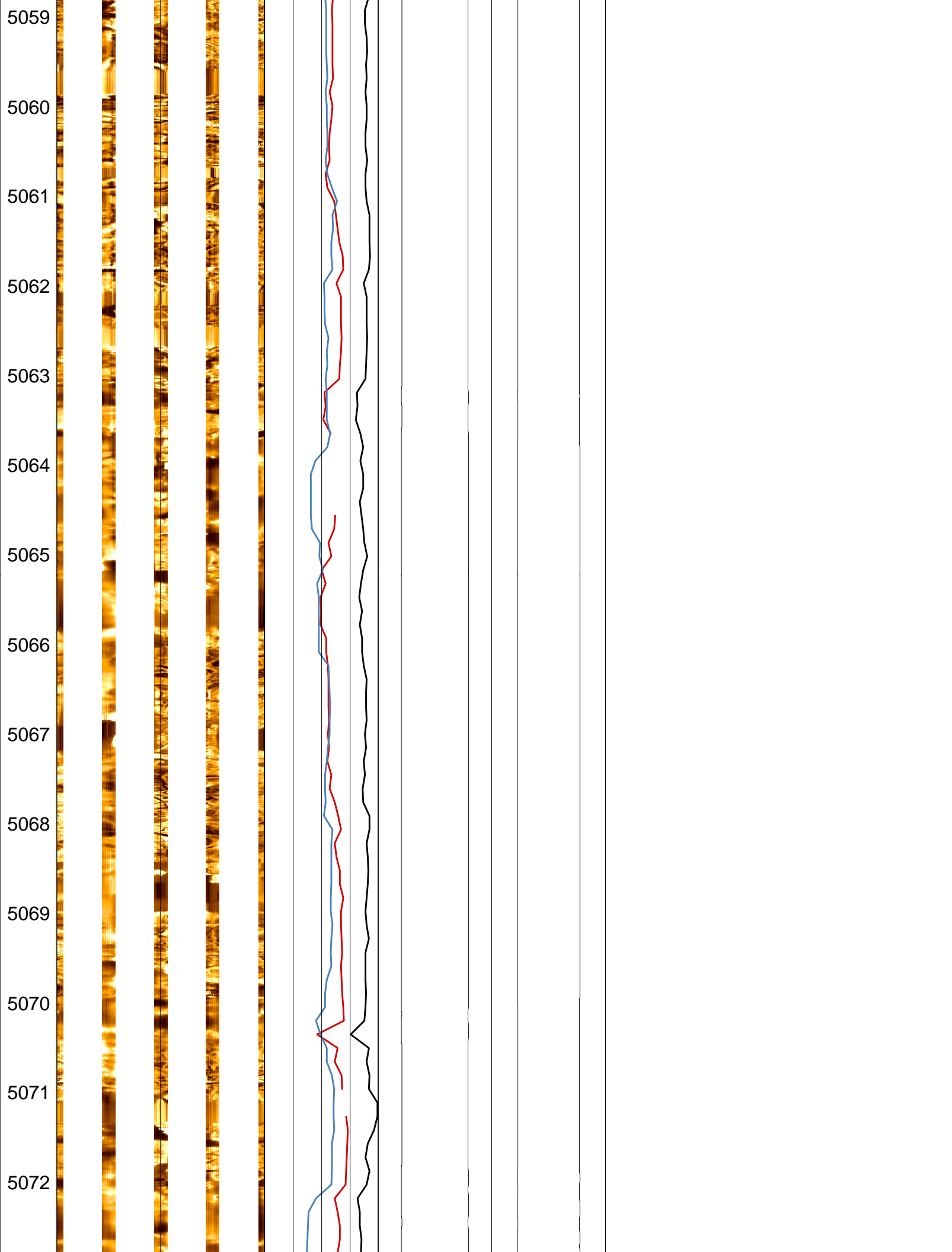


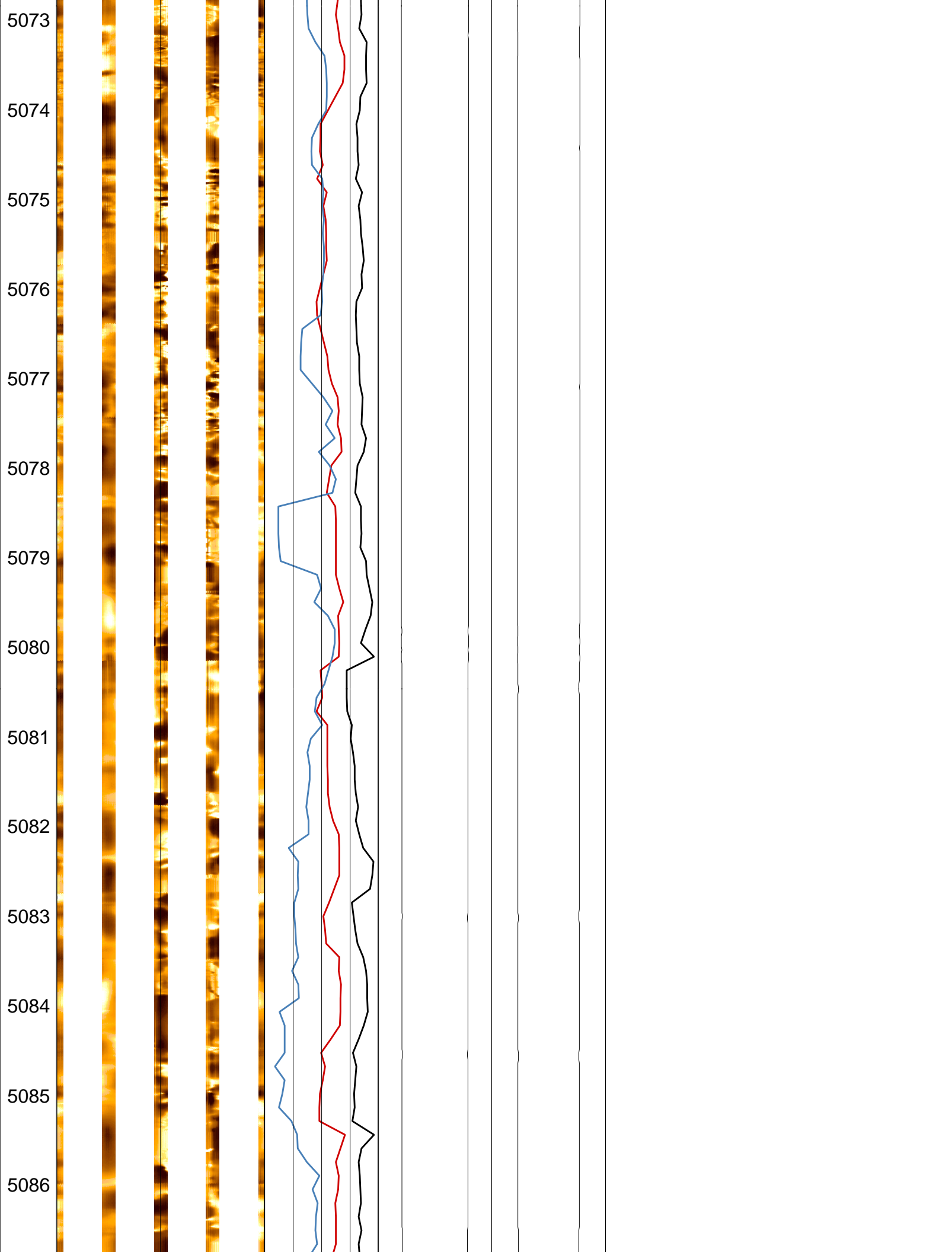


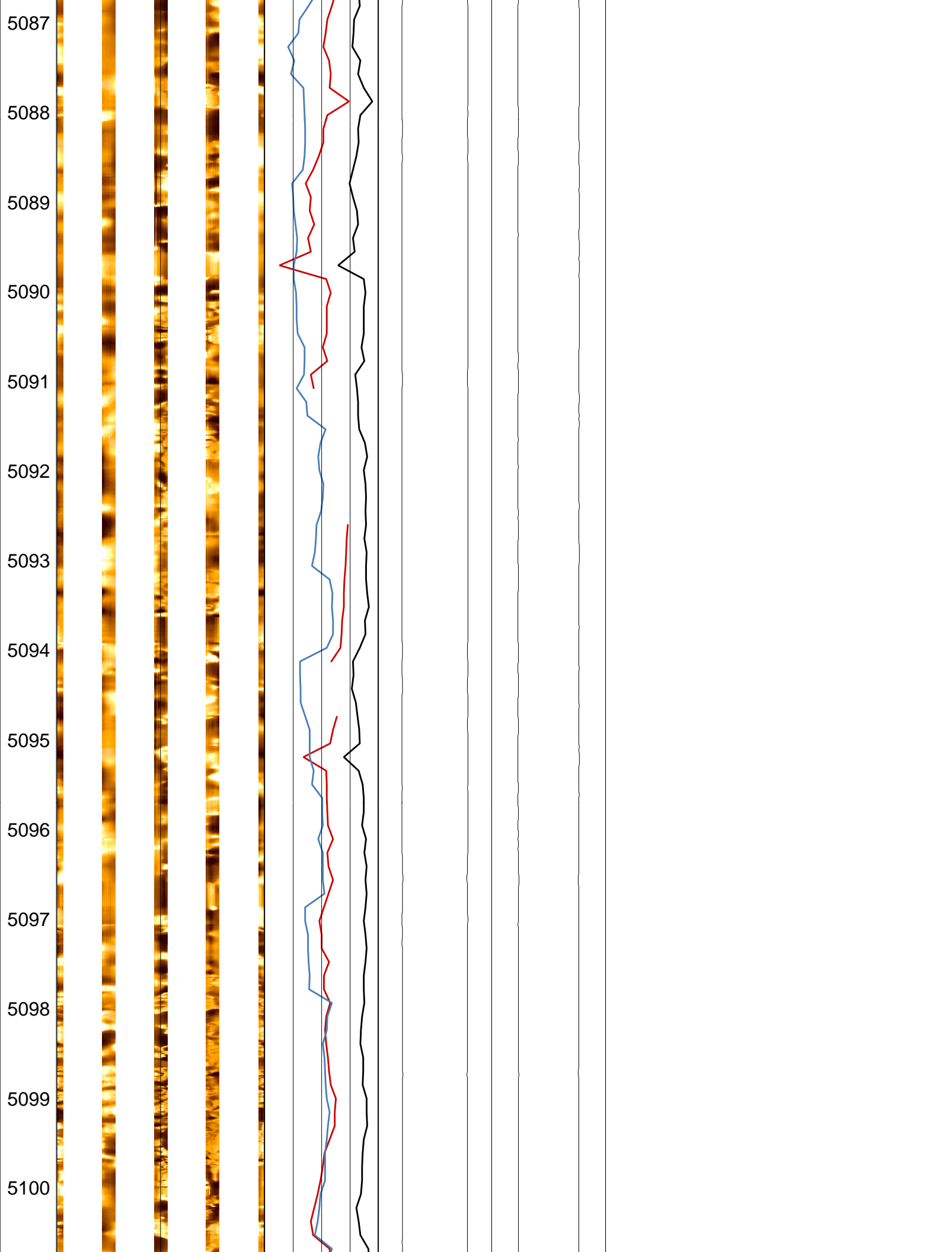


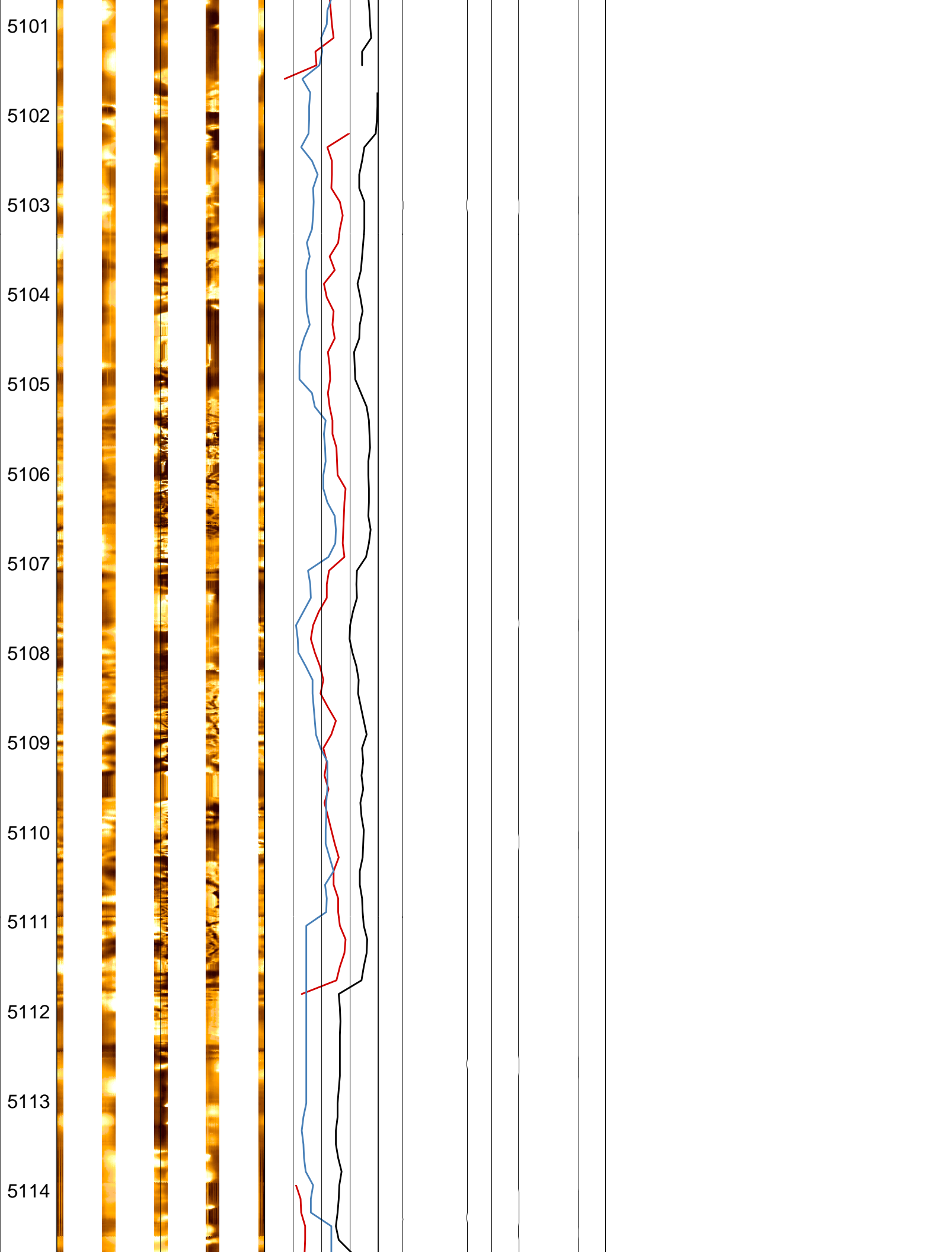


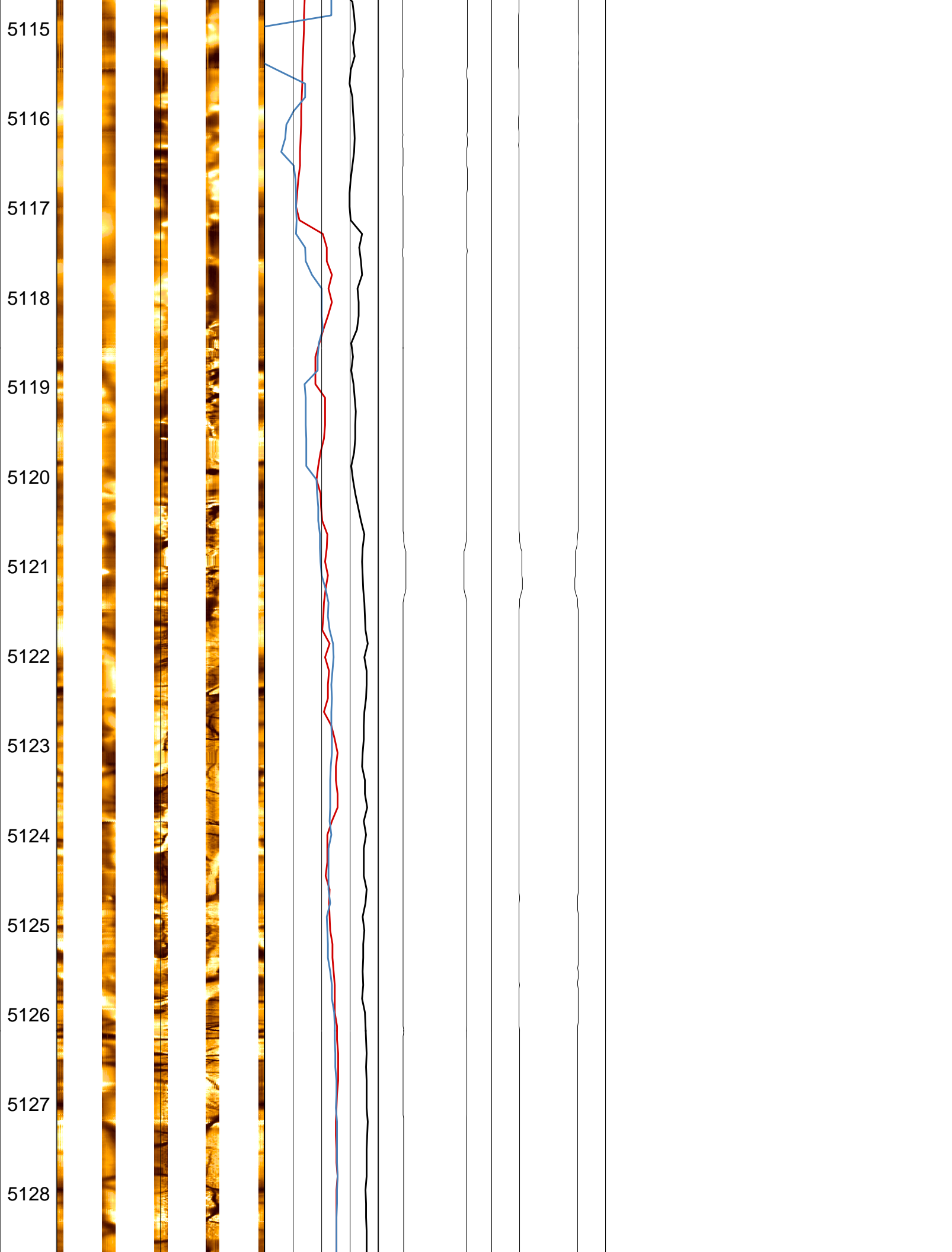












5129

5130

5131

5132

5133

5134

5135

5136

5137

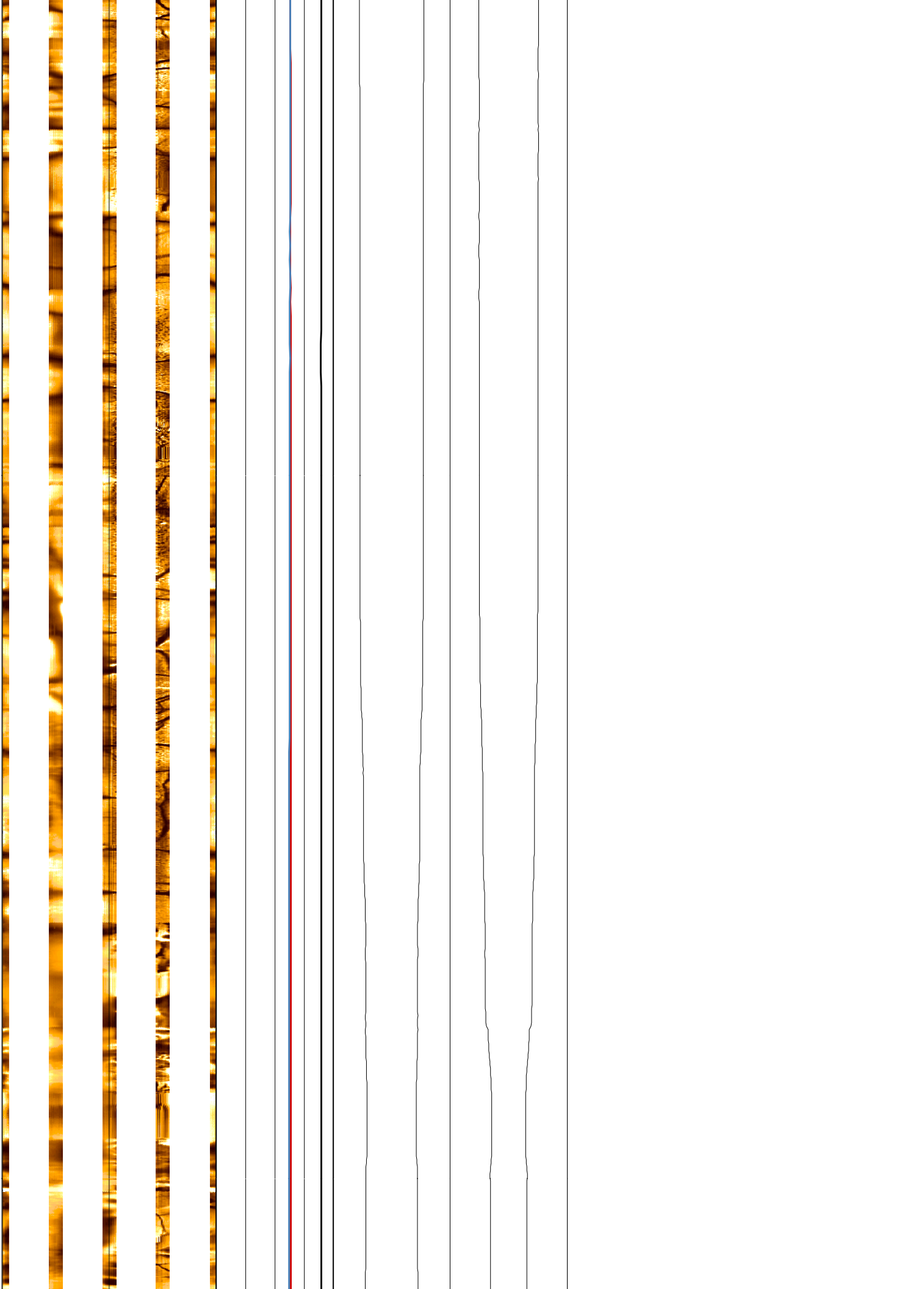
5138

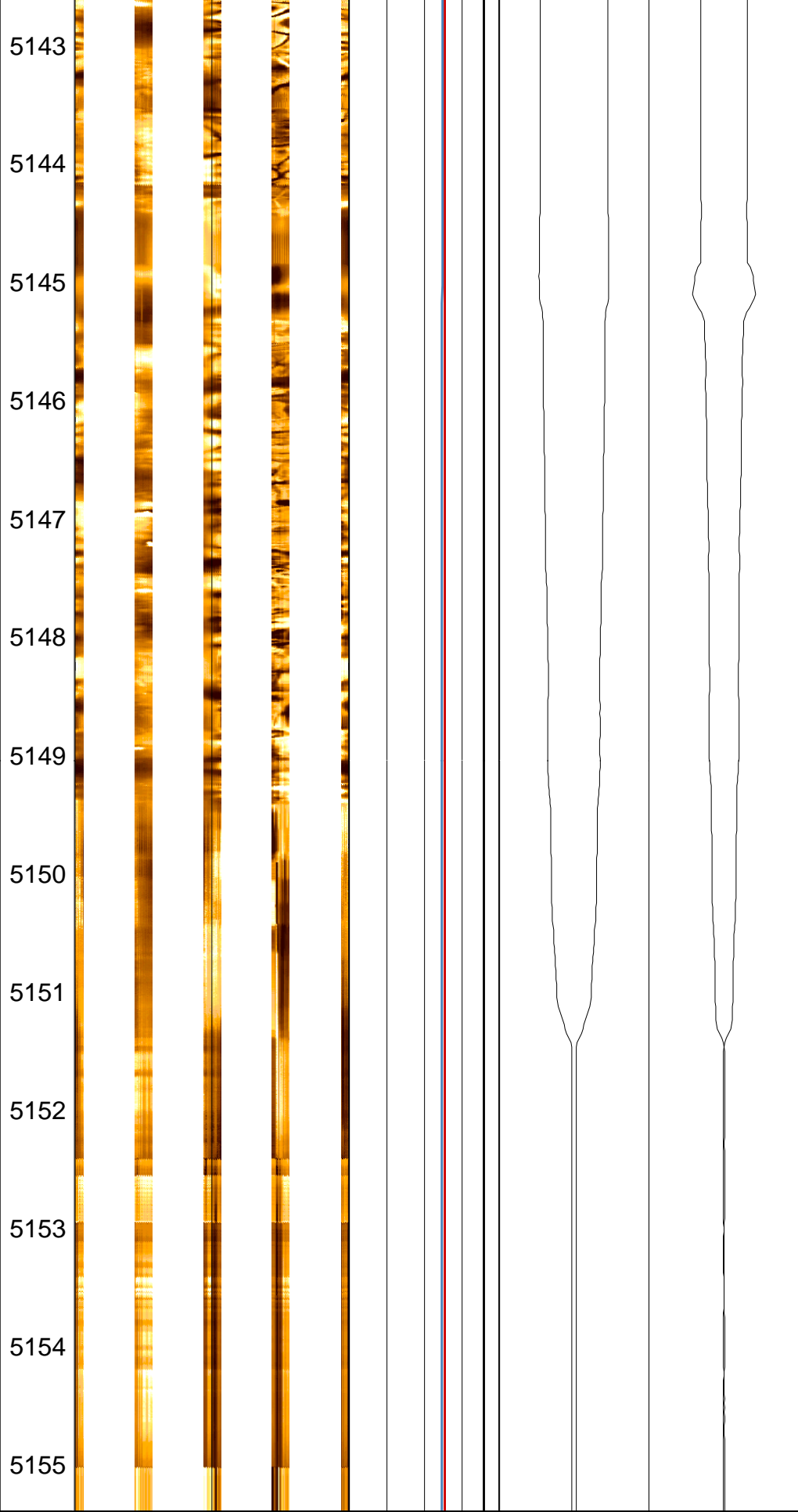
5139

5140

5141

5142





MD 1 : 50 m	DSI_037LUP FMS4 .DYNA [C311036]	DT1 .GUSTO	C1 .CRC [A	C2 .CRC [A
	Horizontal Scale: 1 : 17.000 Straight Image	200 ( us/ft ) 40	-10 ( in ) 16	-10 ( in ) 16
		DT4S .CUST	C1 .CRC [A	C2 .CRC [A
	0 120 240 360	200 ( us/ft ) 40	16 ( in ) -10	16 ( in ) -10

Resistive FMS4 Image@conductive



DT4P .CUST

200 ( us/ft ) 40

COMPANY: Lamont Doherty

WELL: ODP Leg 200, Site 1224F

FIELD: H20

COUNTY: Joides Resolution

STATE: Pacific Ocean

BOTTOM LOG INTERVAL 5150 m

SCHLUMBERGER DEPTH 5152 m

DEPTH DRILLER 5152.5 m

KELLY BUSHING 11.3 m

DRILL FLOOR 11 m

GROUND LEVEL -4978 m

**Schlumberger**

Formation Micro-Scanner