

# Processed FMS Images Depth Reference: m WMSF

\* A Mark of Schlumberger

Using the following logs: FMS  
HLDS

COMPANY: Lamont Doherty  
WELL: Expedition 336 Site U1383C  
FIELD: Mid Atlantic Ridge  
Rig:  
Ocean:  
COUNTRY:  
Date Logged: 3-Nov-2011 Date Processed:  
Well Location: Latitude: N 22° 48.1241'  
Longitude: W 46° 3.1662'  
Elevations: KB: 11m DF: 11m GL: -4421.5m  
API Number: Job Number:

FOLD HERE The well name, location and borehole reference data were furnished by the customer.

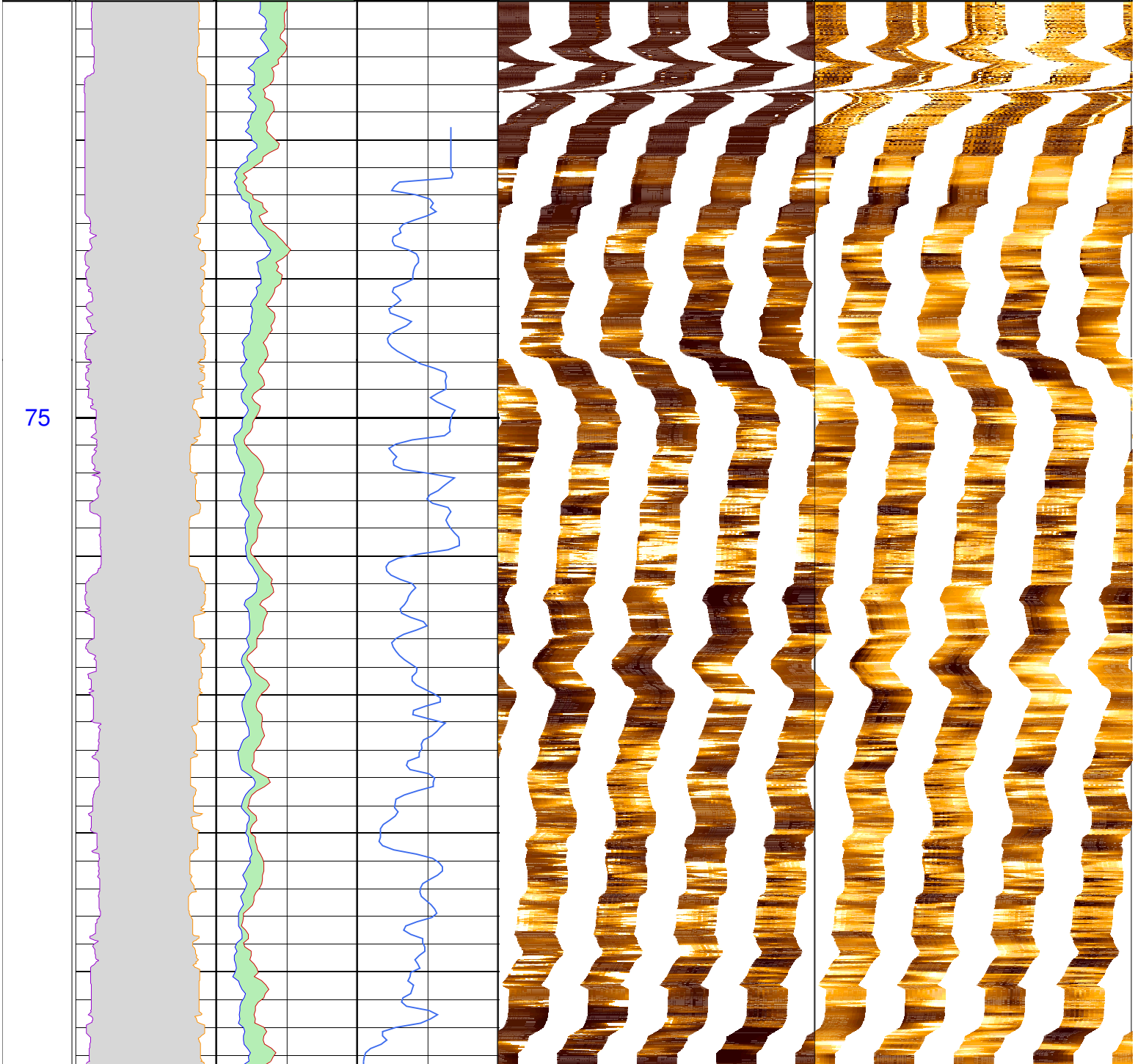
All interpretations are opinions based on inferences from electrical or other measurements and we cannot, and do not guarantee the accuracy or correctness of any interpretation, and we shall not, except in the case of gross or willful negligence on our part, be liable or responsible for any loss, costs, damages or expenses incurred or sustained by anyone resulting from any interpretations made by any of our officers, agents or employees. These interpretations are also subject to Clause 4 of our General Terms and Conditions as set out in our current Price Schedule.

Field Recording:	Location: Houston	Software Version: 19C0-187	Engineer: C. Furman
Office Recording:	ICS Center:	Baseline:	Log Analyst:
<b>Mud and Borehole Measurements:</b>			
Rm @ Measured Temperature:	@	BHT: 100degC	Bitsize: 9.875in
Rmf @ Measured Temperature:	@	Type Fluid in Hole:	Seawater
Rmc @ Measured Temperature:	@	Mud Density: 1.05g/cm3	

Remarks:

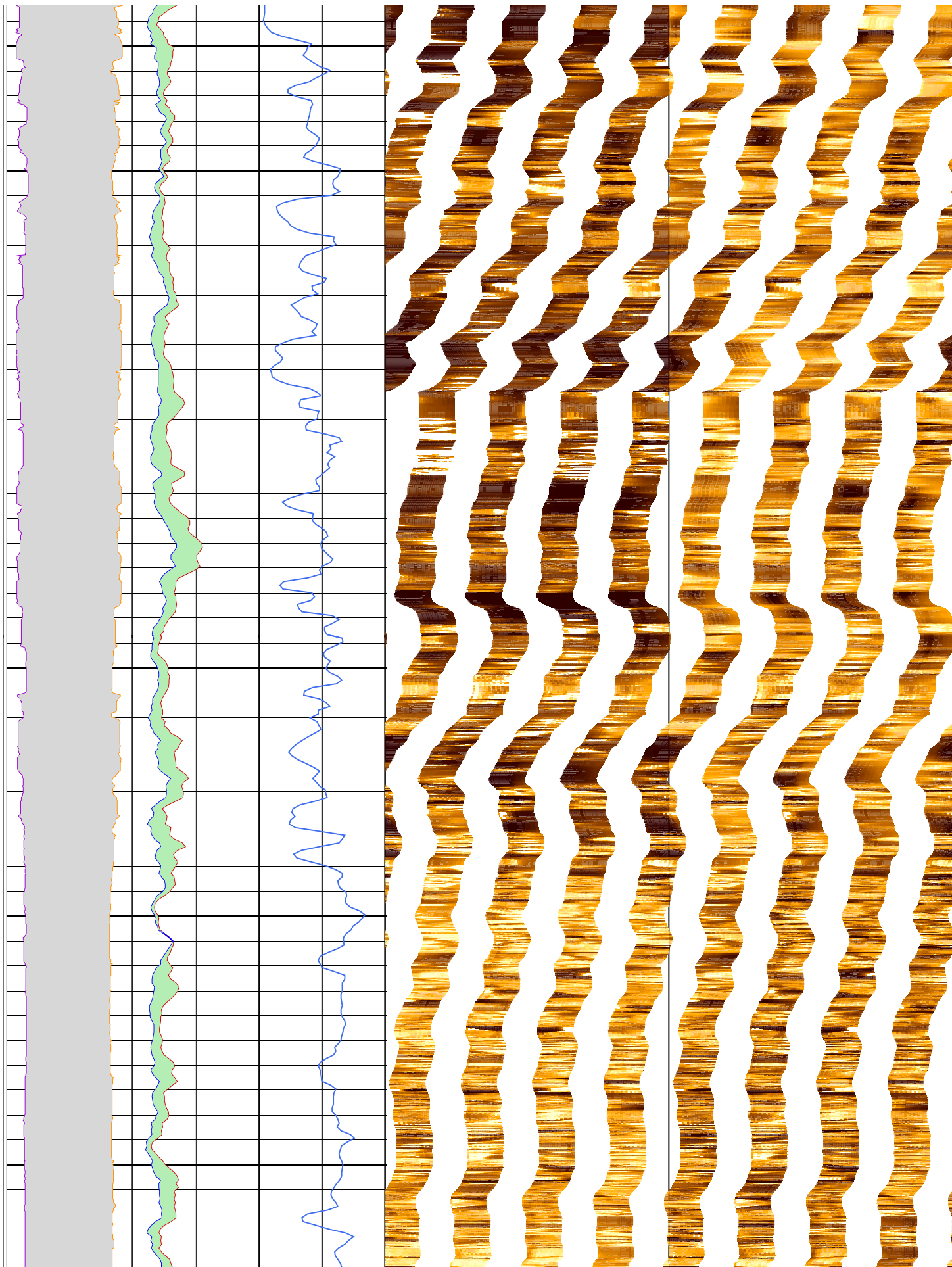
Data depth-shifted and depth-matched. Depth reference: m WMSF. Drill pipe at 52.5 m WMSF. Water depth at 4421.5 m WMSF. Average peak-to-peak heave: 2 m. Wireline heave compensator was used during the logging operation.

	C2_Pass1 -16 (in) 16	HSGR_pass 0 (gAPI) 25		FMS Pass 1 Static Horizontal Scale: 1 : 6.981 Orientation North	FMS Pass 1 Dynamic Horizontal Scale: 1 : 6.981 Orientation North
	C1_Pass1 16 (in) -16	HCGR_pass 0 (gAPI) 25		0 120 240 360	0 120 240 360
MD 1 : 200 m	lgp_Area_	lgp_Area_	RHOM_pass 1 (g/cm3) <sup>3.5</sup>	Resistive FMS4 Image Conductive	Resistive FMS4 Image Conductive



100

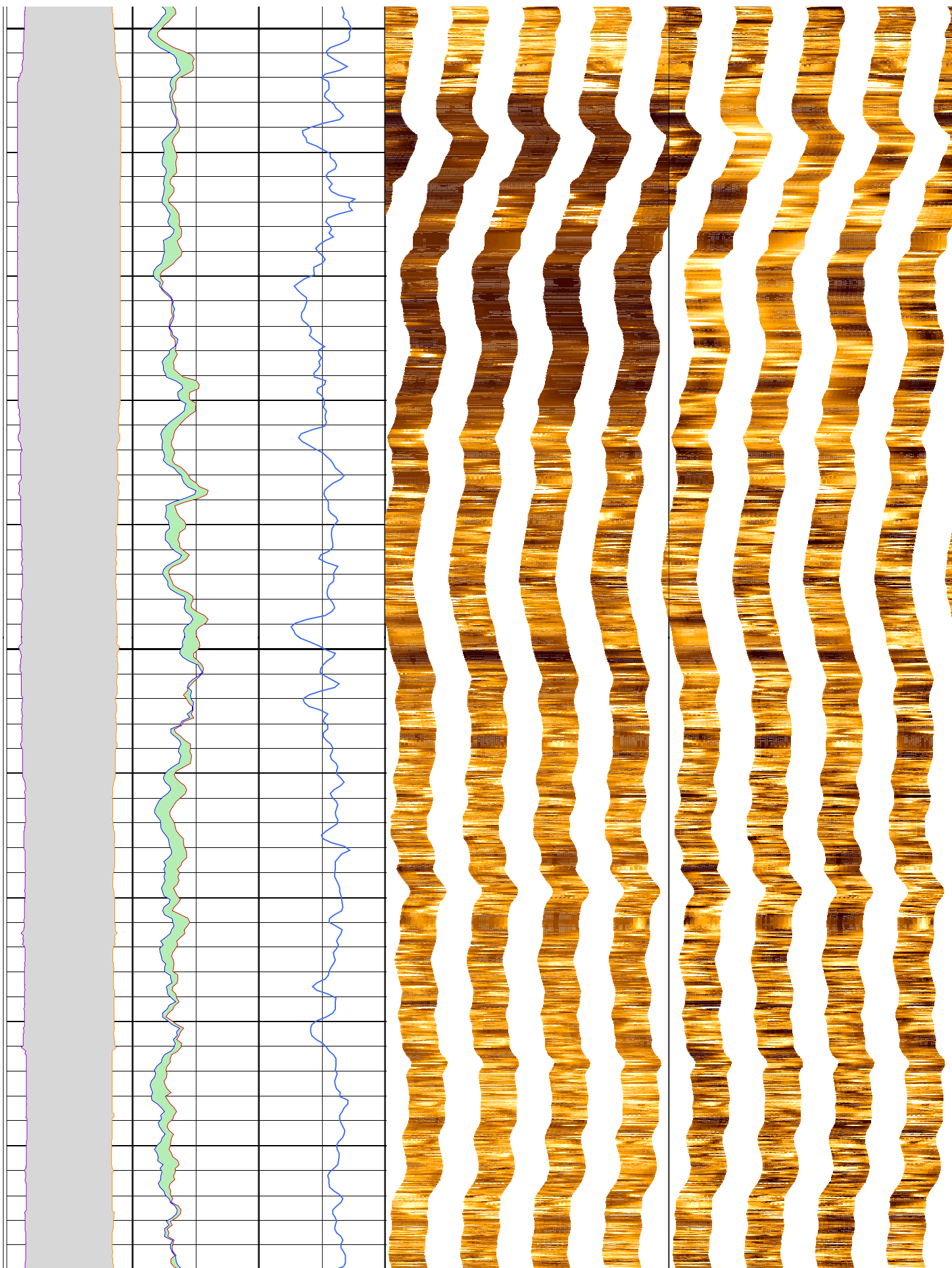
125



150

175

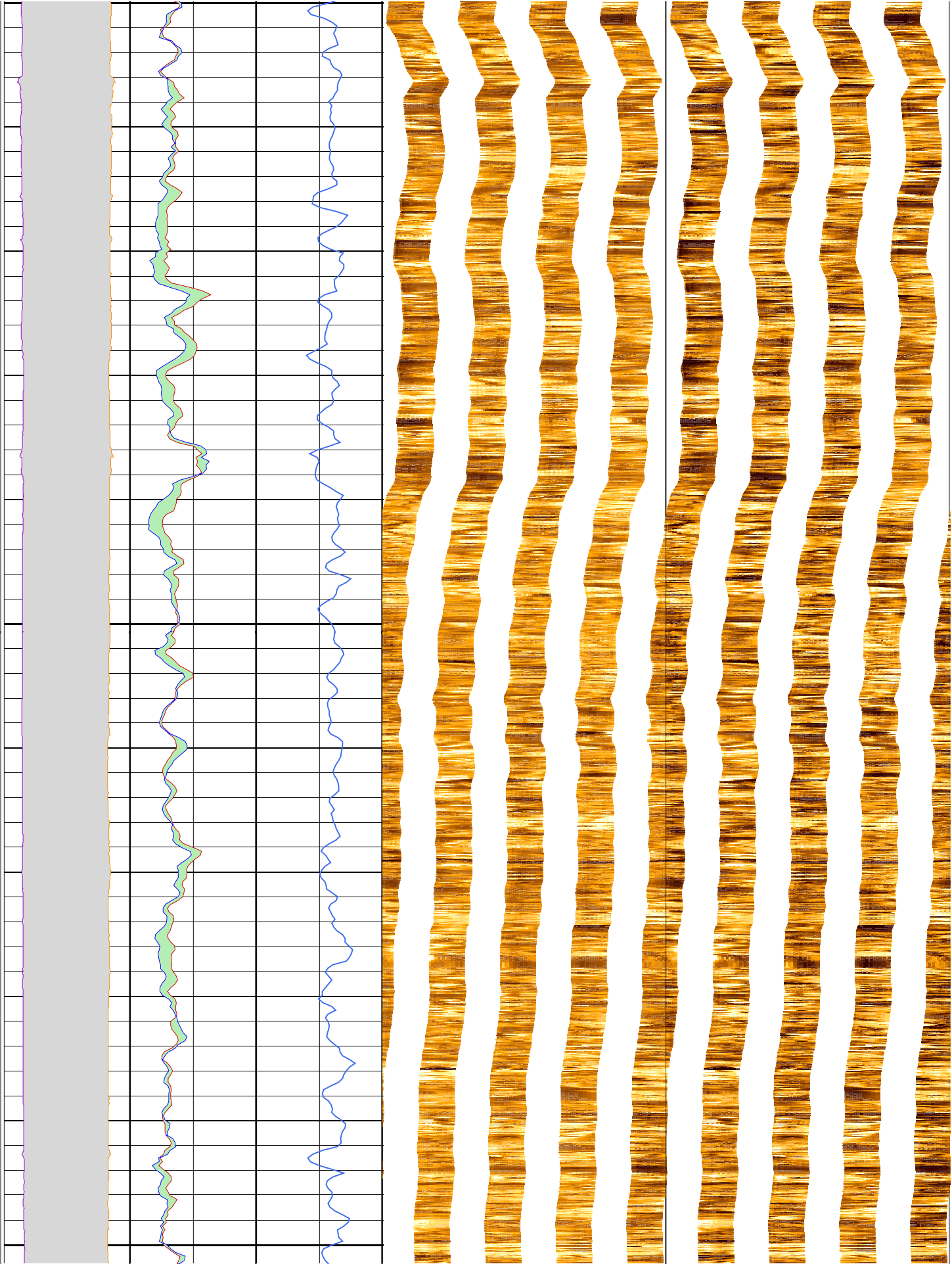
200



200

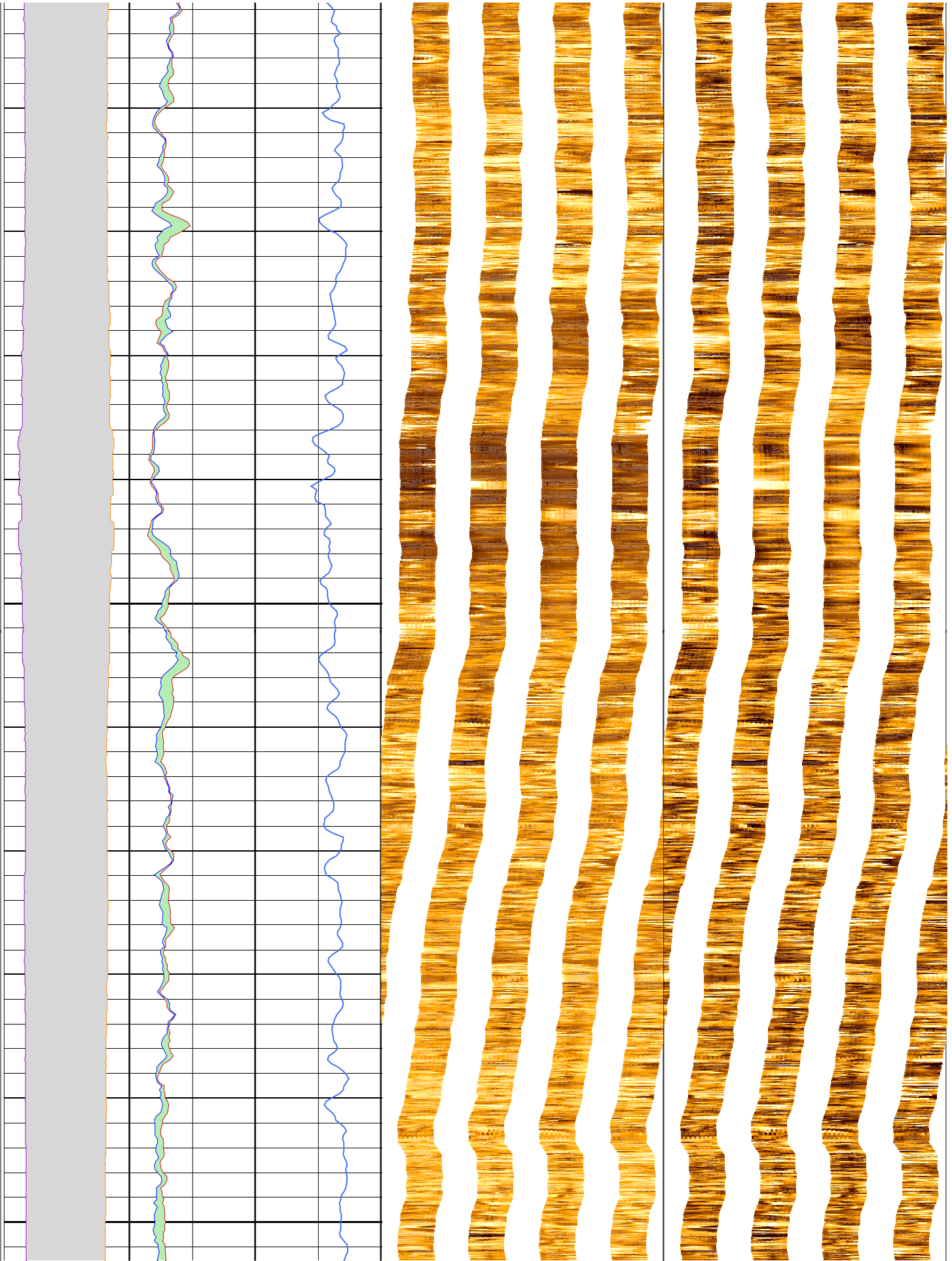
225

250

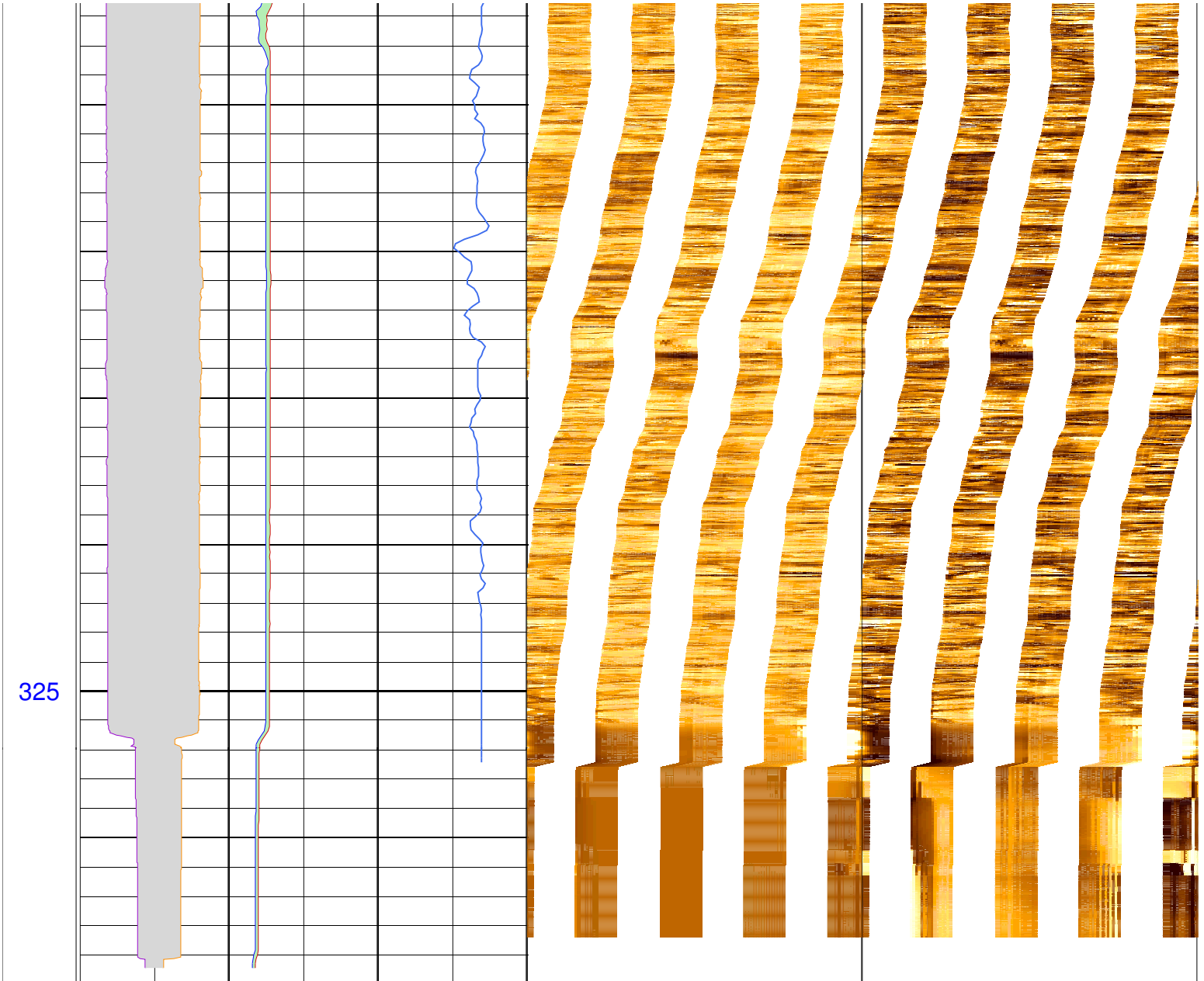


275

300



325



MD 1 : 200 m	<u>lgp_Area_</u>	<u>lgp_Area_</u>	<u>RHOM_pass</u>	FMS Pass 1 Static Horizontal Scale: 1 : 6.981 Orientation North 0 120 240 360 Resistive FMS4 Image Conductive	FMS Pass 1 Dynamic Horizontal Scale: 1 : 6.981 Orientation North 0 120 240 360 Resistive FMS4 Image Conductive
	C1_Pass1	<u>HCGR_pass</u>	1 (g/cm3) <sup>3.5</sup>		
	16 (in) -16	0 (gAPI) 25			
	<u>C2_Pass1</u>	<u>HSGR_pass</u>			
	-16 (in) 16	0 (gAPI) 25			