

Company: Lamont Doherty

Well: Expedition 323 Site U1339D

Field: Bering Sea

Rig: JOIDES Resolution **Country:** USA

APS Neutron Porosity HLDS Litho-Density Natural Gamma Spectroscopy

LOCATION		Latitude: N 54° 40.471'	Elev.: K.B. 11.00 m
		Longitude: W 169° 58.453'	G.L. -1879.40 m
			D.F. 11.00 m
Permanent Datum:	Mean Sea Level	Elev.: 0.00 m	
Log Measured From:	Drill Floor	11.00 m above Perm. Datum	
Drilling Measured From:	Drill Floor		
Ocean:	Max. Well Deviation	Longitude	Latitude
Pacific	0 deg		

Rig: JOIDES Resolution
Field: Bering Sea
Location: Latitude: N 54° 40.471'
Well: Expedition 323 Site U1339D
Company: Lamont Doherty

Logging Date	20-Jul-2009	
Run Number	1	
Depth Driller	2079.4 m	
Schlumberger Depth	2079.4 m	
Bottom Log Interval	2067 m	
Top Log Interval	1962 m	
Casing Driller Size @ Depth	4.500 in @ 1962 m	
Casing Schlumberger	1962 m	
Bit Size	11.438 in	
Type Fluid In Hole	Seawater Gel	
Density	1.258 g/cm3	
Fluid Loss		
PH		
Source Of Sample	N/A	
RM @ Measured Temperature	@ @	
RMF @ Measured Temperature	@ @	
RMC @ Measured Temperature	@ @	
Source RMF	RMC	
RM @ MRT	RMF @ MRT	
	@ 15	@ 15
Maximum Recorded Temperatures	15 degC	
Circulation Stopped	Time	Time
Logger On Bottom	Time	Time
Unit Number	Location	
Recorded By	C. Furman	
Witnessed By	T. Liu, G. Guerin	

Logging Date			Run 1	Run 2	R
Run Number					
Depth Driller					
Schlumberger Depth					
Bottom Log Interval					
Top Log Interval					
Casing Driller Size @ Depth					
Casing Schlumberger					
Bit Size					
Type Fluid In Hole					
Density					
Fluid Loss					
PH					
Source Of Sample					
RM @ Measured Temperature			@	@	
RMF @ Measured Temperature			@	@	
RMC @ Measured Temperature			@	@	
Source RMF	RMC				
RM @ MRT	RMF @ MRT		@	@	
Maximum Recorded Temperatures					
Circulation Stopped	Time	Time			
Logger On Bottom	Time	Time			
Unit Number	Location				
Recorded By					
Witnessed By					

DISCLAIMER

THE USE OF AND RELIANCE UPON THIS RECORDED-DATA BY THE HEREIN NAMED COMPANY (AND ANY OF ITS AFFILIATES, PARTNERS, REPRESENTATIVES, AGENTS, CONSULTANTS AND EMPLOYEES) IS SUBJECT TO THE TERMS AND CONDITIONS AGREED UPON BETWEEN SCHLUMBERGER AND THE COMPANY, INCLUDING: (a) RESTRICTIONS ON USE OF THE RECORDED-DATA; (b) DISCLAIMERS AND WAIVERS OF WARRANTIES AND REPRESENTATIONS REGARDING COMPANY'S USE OF AND RELIANCE UPON THE RECORDED-DATA; AND (c) CUSTOMER'S FULL AND SOLE RESPONSIBILITY FOR ANY INFERENCE DRAWN OR DECISION MADE IN CONNECTION WITH THE USE OF THIS RECORDED-DATA.

OTHER SERVICES1
OS1: FMS
OS2: DSI
OS3: DIT
OS4: HNGS

REMARKS: RUN NUMBER 1

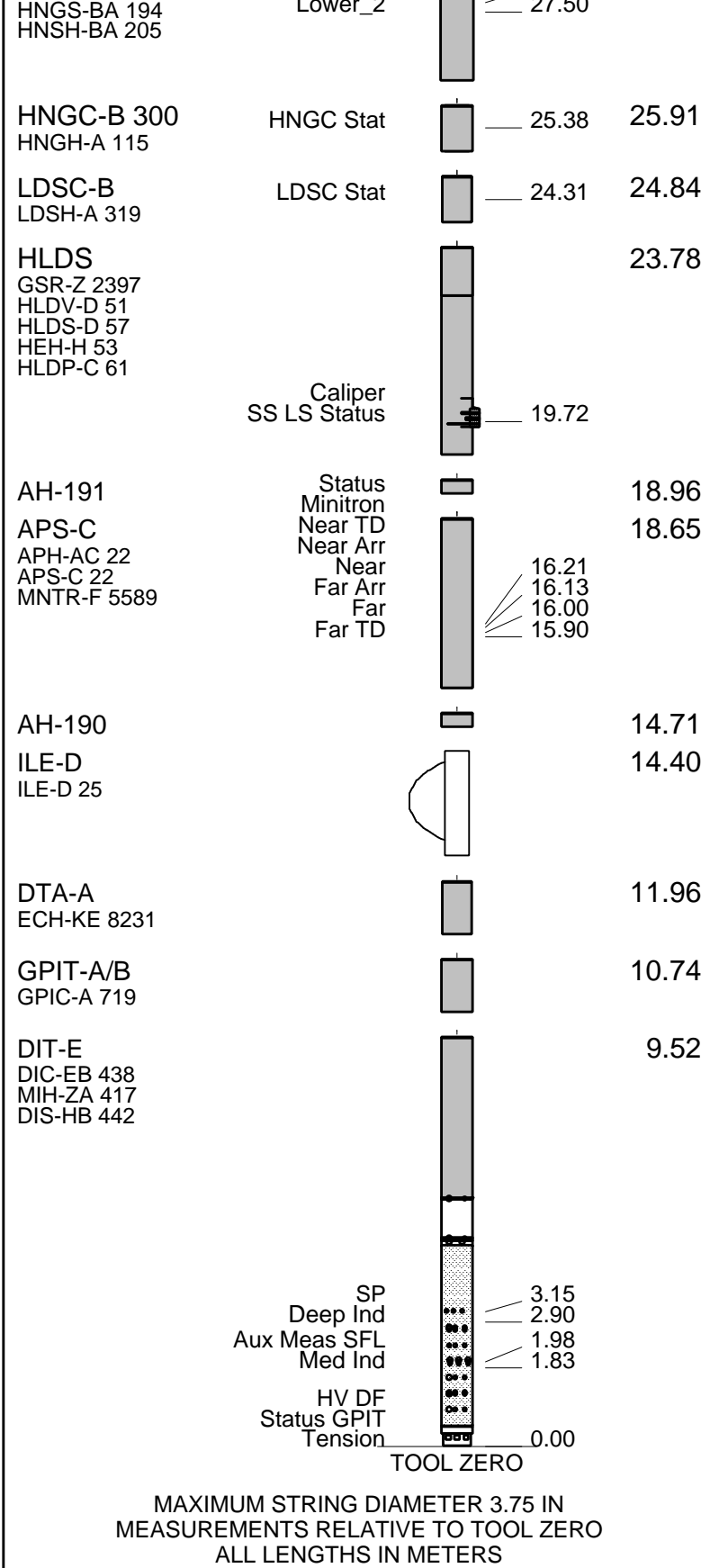
Logs run in fourth hole ("D" hole) of drilling site U1339 to aid in correlation of core data collected in surface labs.
Average heave during the run was only 0.2m; Active Heave Compensator used.
TD was found to be 2080mBRF with the pipe (bit) at 1962mBRF. Sea Bed given as 1879.4mBRF.
Hole Size input taken from HLDS Caliper.
Tools run slick in order to fit through drill pipe, as is standard practice on this project.
HLDS Caliper closed at approximately 2000m to facility entry into drill pipe.
APS eccentralized using in-line bowspring below tool supplimented by HLDS caliper above APS.
APS minitron deactivated at approximately 1933m.
HNGS data affected by minitron output from bit (1962m) to minitron shutdown (1933m).
Density recorded in high-resolution mode at a logging speed of 900 ft./hr.
Caliper slightly bent after first pass; second pass played back with caliper calibration offset to compensate.

RUN 1			RUN 2		
SERVICE ORDER #: PROGRAM VERSION: 17C0-154 FLUID LEVEL:			SERVICE ORDER #: PROGRAM VERSION: FLUID LEVEL:		
LOGGED INTERVAL	START	STOP	LOGGED INTERVAL	START	STOP

EQUIPMENT DESCRIPTION

RUN 1		RUN 2	
SURFACE EQUIPMENT			
SFT-281 2 SFT-178 2 GSR-U 616008 WITM (DTS)-A			

DOWNHOLE EQUIPMENT			
LEH-QT			30.21
LEH-QT 301			
DTC-H	CTEM		29.04
ECH-KC 2304	TelStatus		29.32
	ToolStatu		28.41
HNGS-BA 194	Upper_1		27.71
			28.41



Production String	(in)	(m)	Well Schematic	(m)	(in)	Casing String
	OD	ID		MD	OD	

Kelly Bushing Elevation

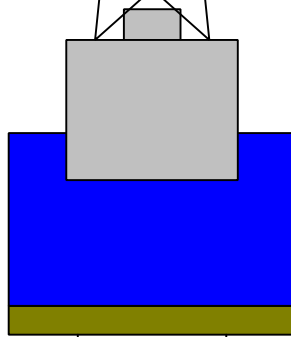
Derrick Floor Elevation

Mean Sea Level

11.0

11.0

0.0



0.0

5.875

Drill Pipe



1879.4

11.340

Sea Bed

1962.0

5.875

Bit Depth

2079.4

11.340

Total Depth

Schlumberger

Main Pass
TD to Sea Bed

MAXIS Field Log

Input DLIS Files

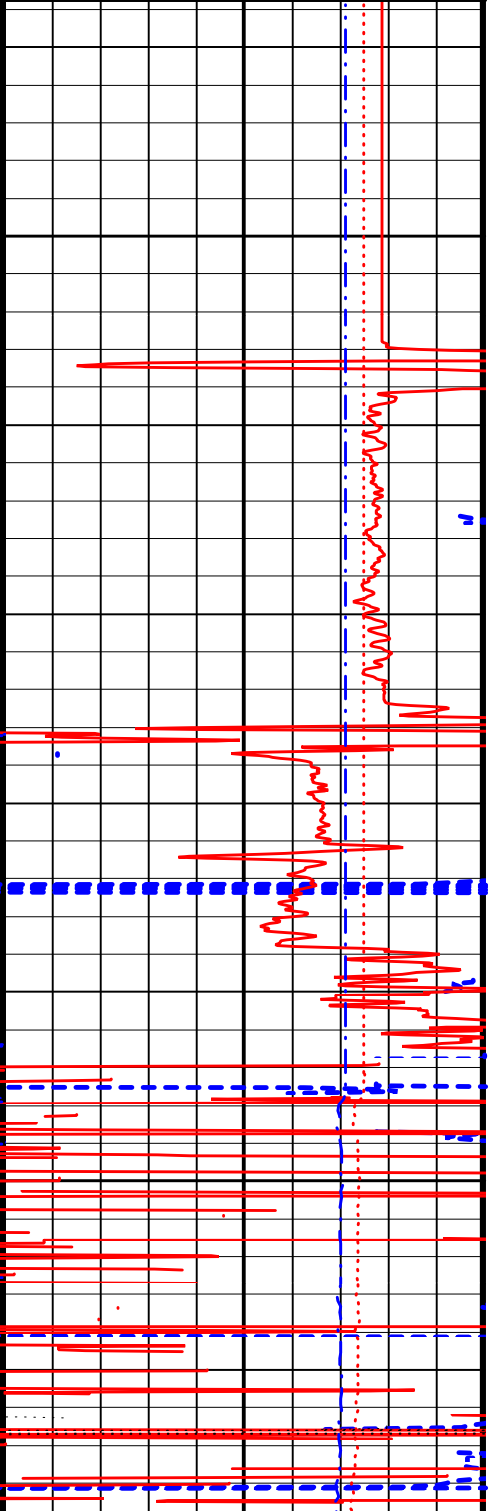
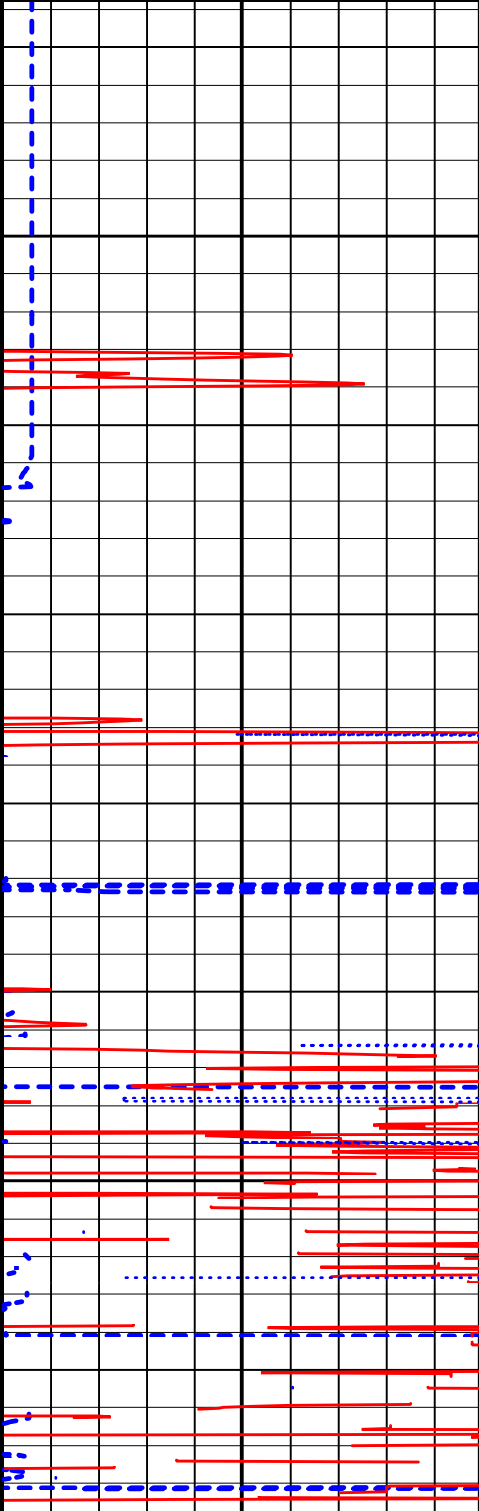
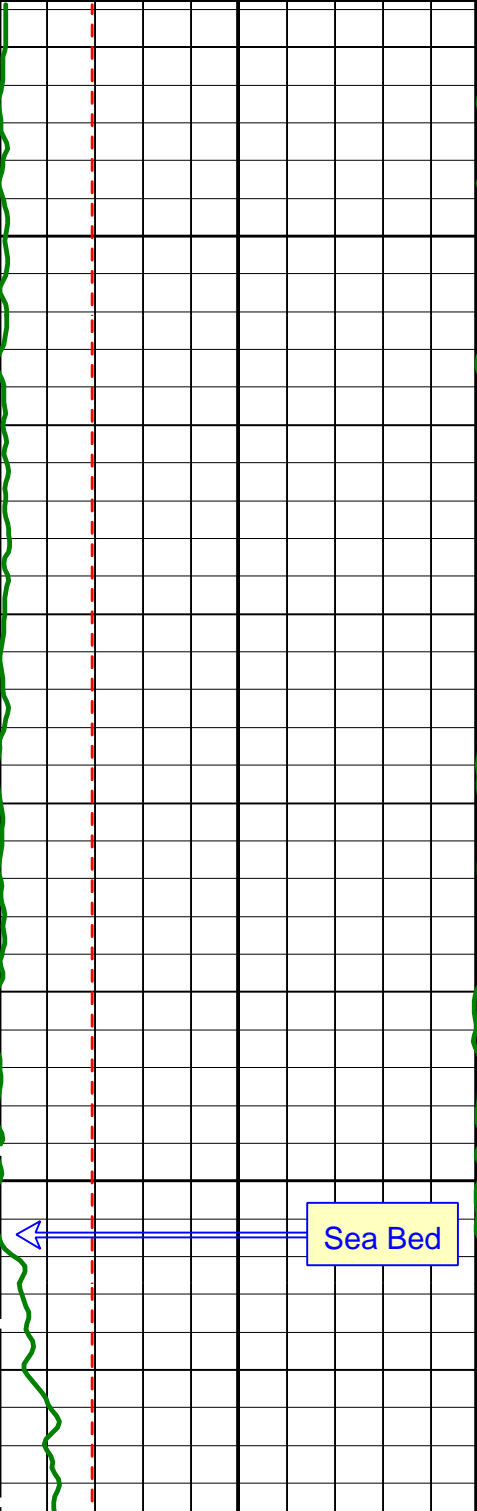
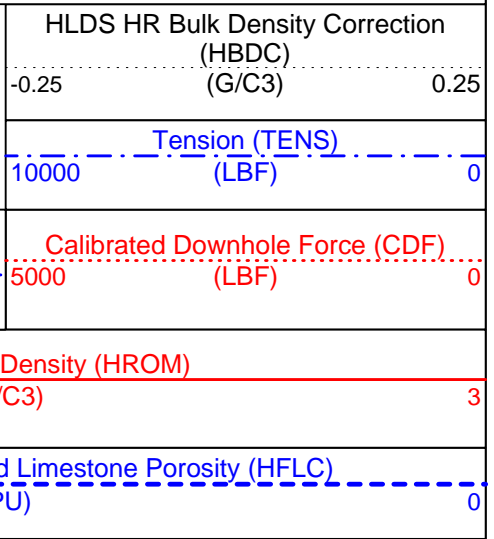
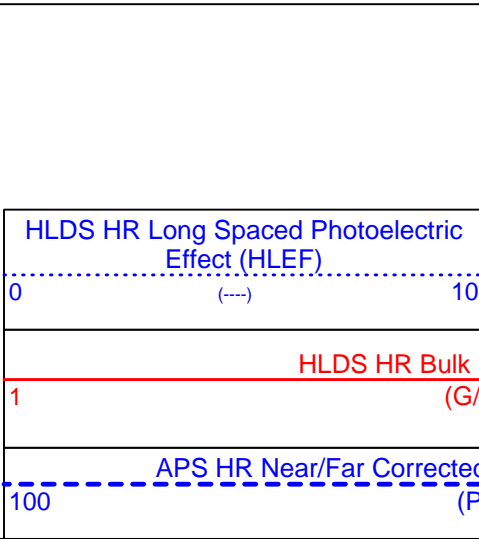
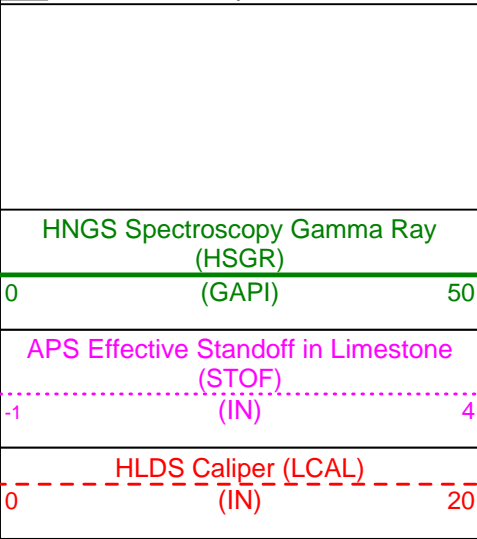
DEFAULT	PI_APS_LDL_NGS_016LUP	FN:19	PRODUCER	20-Jul-2009 16:47	2082.5 M	1843.7 M
---------	-----------------------	-------	----------	-------------------	----------	----------

Output DLIS Files

DEFAULT	PI_APS_LDL_NGS_045PUP	FN:50	PRODUCER	21-Jul-2009 16:48	2082.5 M	1843.7 M
---------	-----------------------	-------	----------	-------------------	----------	----------

OP System Version: 17C0-154

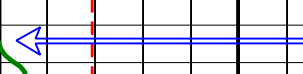
DIT-E	17C0-154	GPIT-A/B	SRPC-3762-Q1_2009_OP17
DTA-A	17C0-154	APS-C	17C0-154
HLDS	17C0-154	LDSC-B	17C0-154
HNGC-B	17C0-154	HNGS-BA	17C0-154
DTC-H	17C0-154		

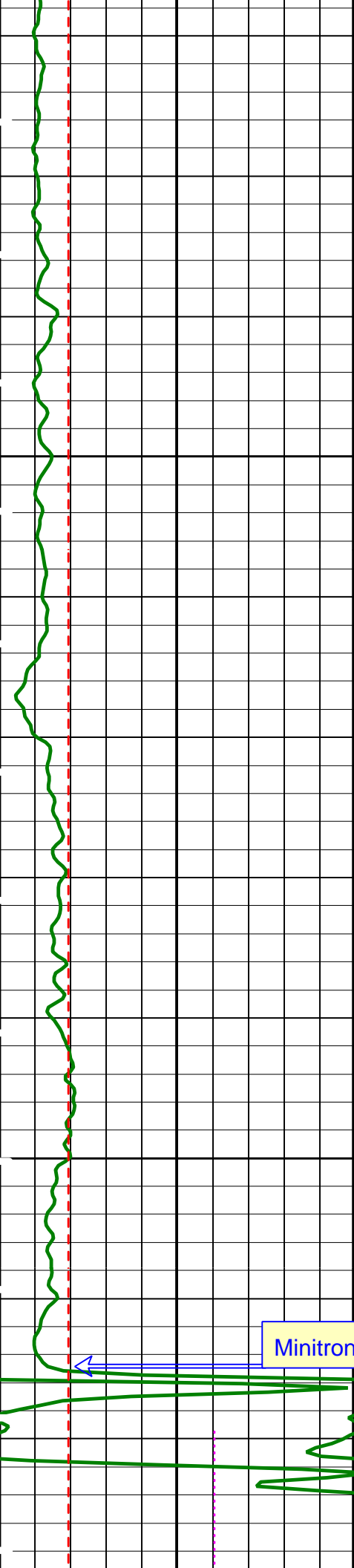


1850

1875

Sea Bed

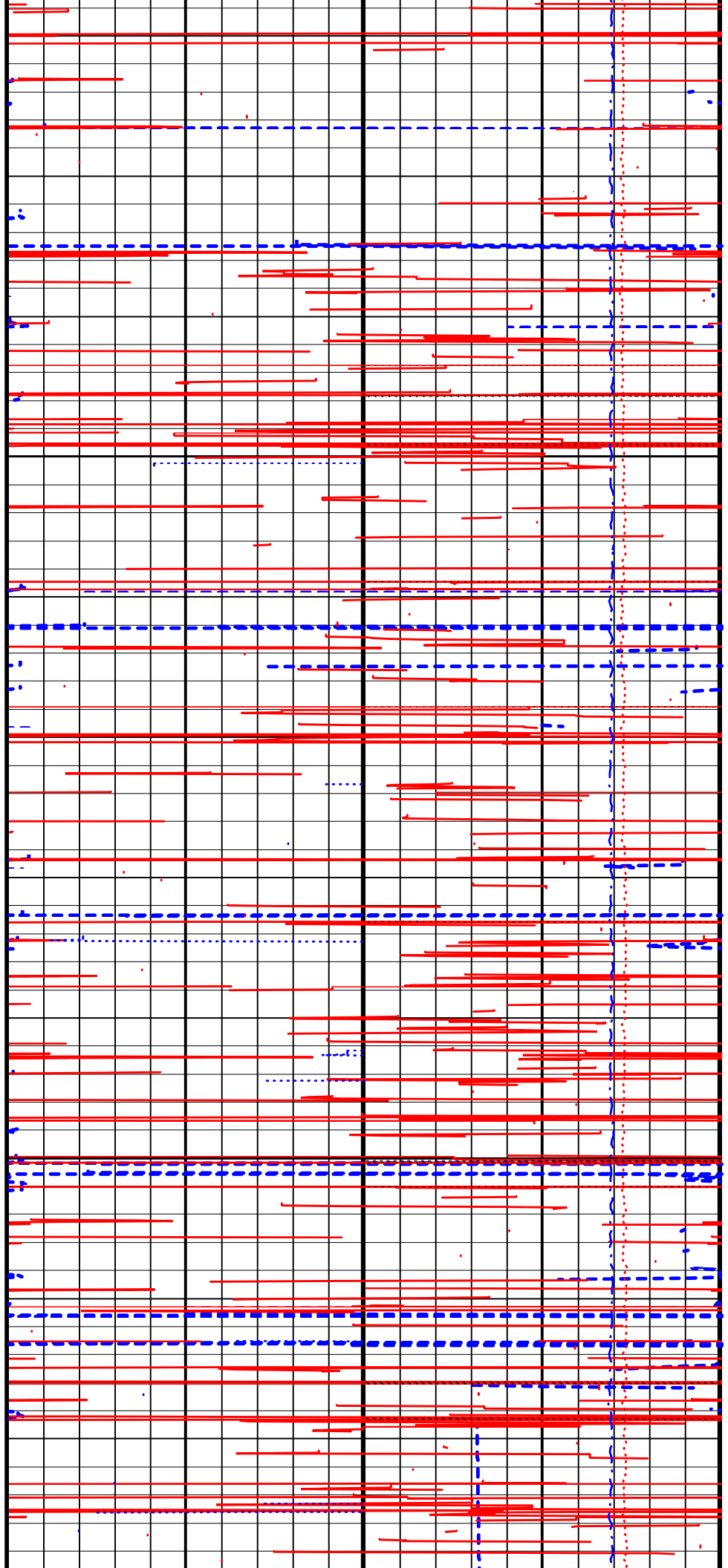


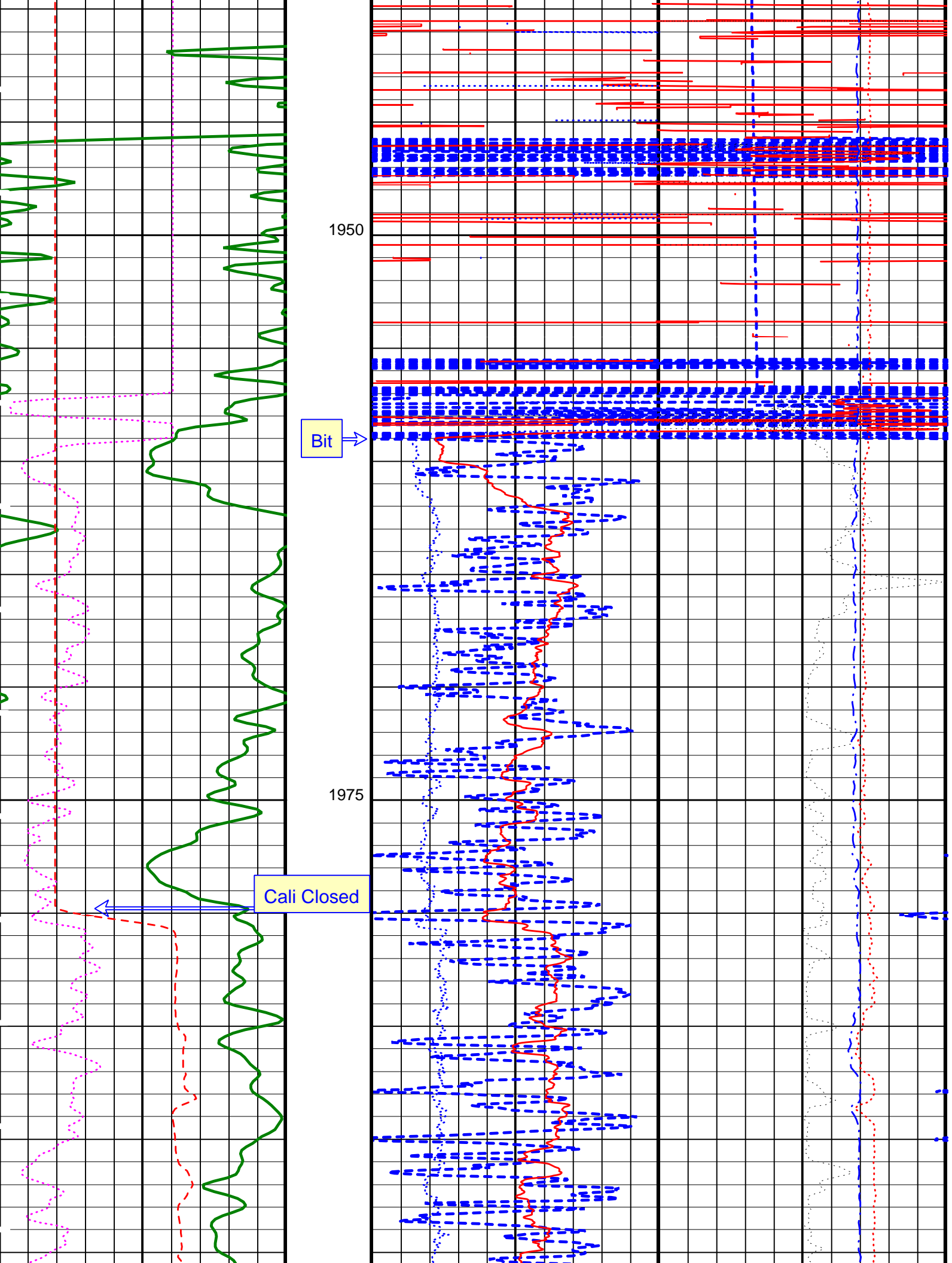


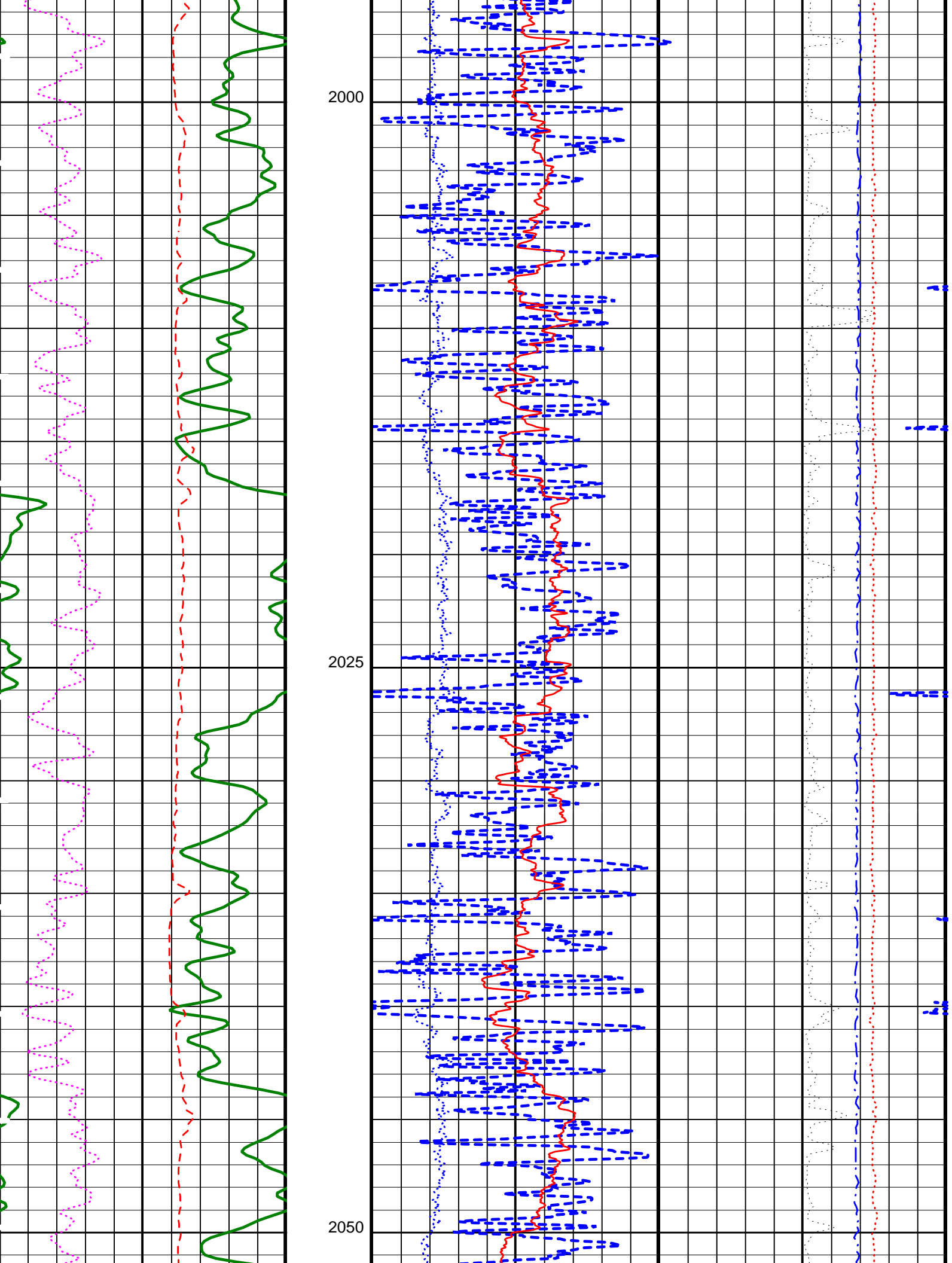
1900

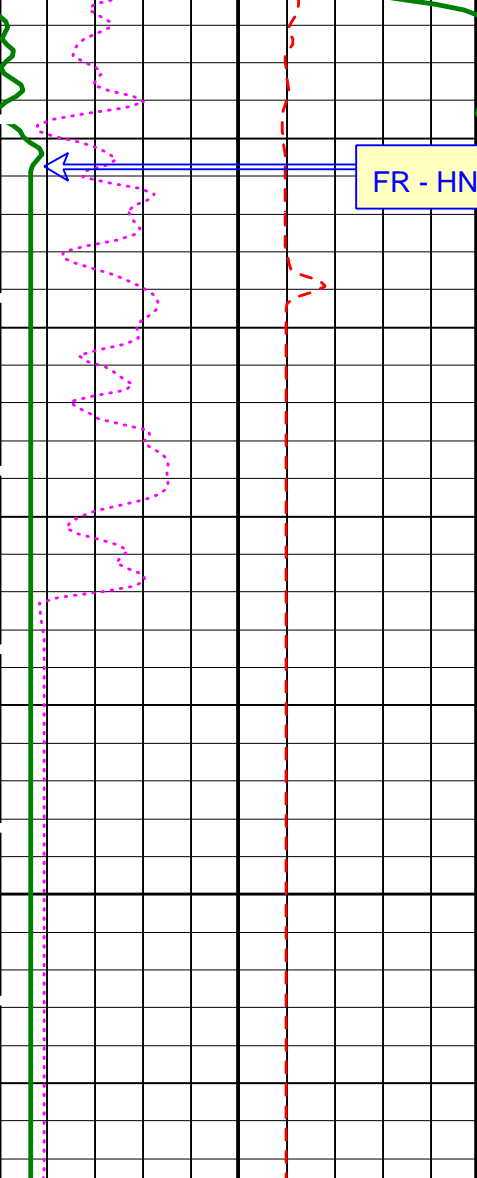
1925

Minitron Off

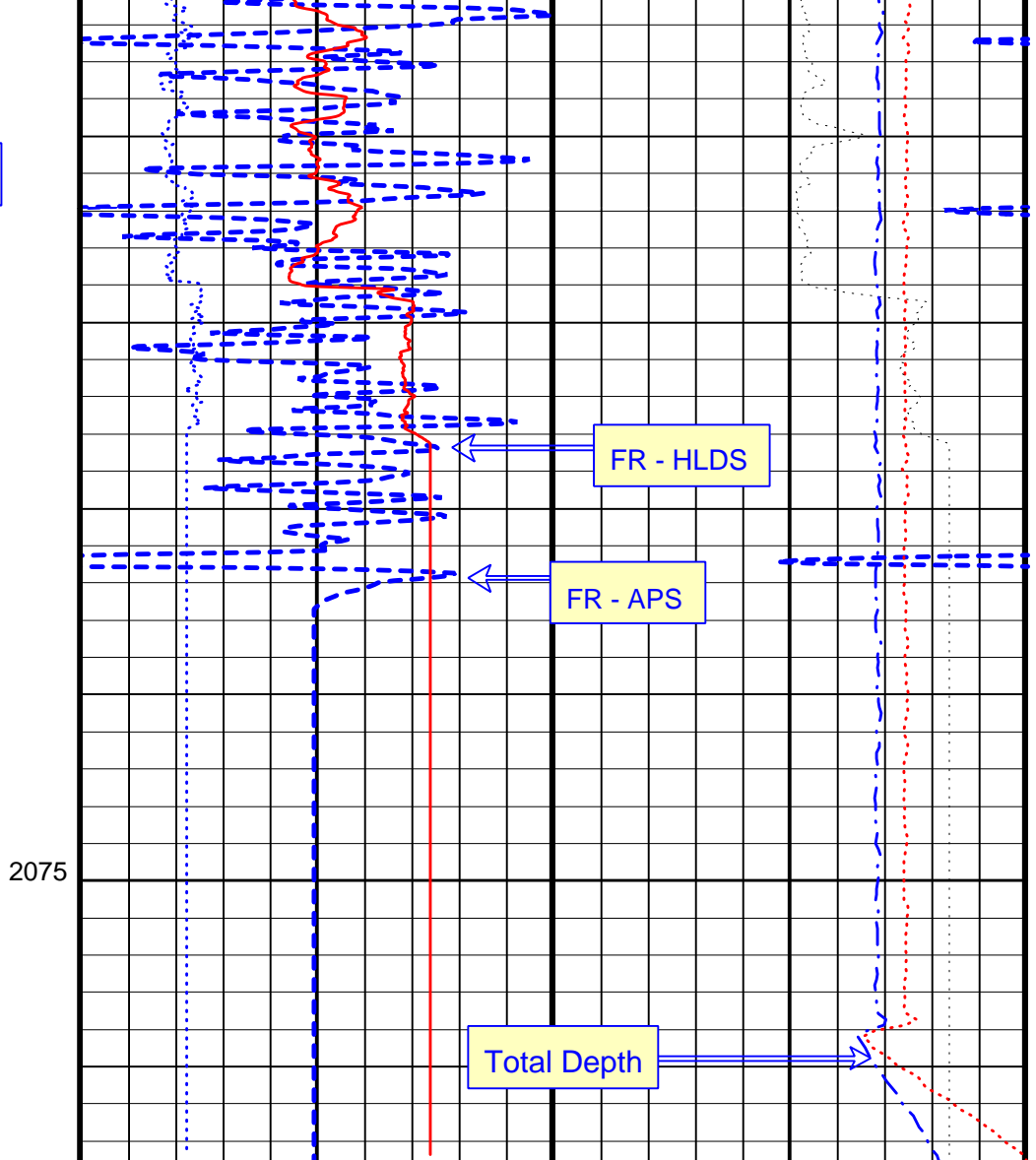








FR - HNGS



FR - HLDS

FR - APS

Total Depth

2075

HLDS Caliper (LCAL) (IN)	0	20
APS Effective Standoff in Limestone (STOF) (IN)	-1	4
HNGS Spectroscopy Gamma Ray (HSGR) (GAPI)	0	50

APS HR Near/Far Corrected Limestone Porosity (HFLC) (PU)	100	0
HLDS HR Bulk Density (HROM) (G/C3)	1	3
HLDS HR Long Spaced Photoelectric Effect (HLEF) (---	0	10
Calibrated Downhole Force (CDF) (LBF)	5000	0
Tension (TENS) (LBF)	10000	0
HLDS HR Bulk Density Correction (HBDC) (G/C3)	-0.25	0.25

PIP SUMMARY

Time Mark Every 60 S

Parameters

DLIS Name	Description	Value
DIT-E: Dual Induction - E		
BHS	Borehole Status	OPEN
BHT	Bottom Hole Temperature (used in calculations)	60 DEGF
DGF1	Deep 10 kHz Gain Factor	0.968036
DGF2	Deep 20 kHz Gain Factor	0.981641
DGF4	Deep 40 kHz Gain Factor	1.00354
DPH1	Deep 10 kHz Phase Shift	0.519505 DEG

DPH2	Deep 20 kHz Phase Shift	0.58231	DEG
DPH4	Deep 40 kHz Phase Shift	-0.0231022	DEG
DRE1	Deep Real 10 kHz Sonde Error Correction	47.0269	MM/M
DRE2	Deep Real 20 kHz Sonde Error Correction	16.7871	MM/M
DRE4	Deep Real 40 kHz Sonde Error Correction	5.70109	MM/M
DRIM	DIT-E Radial Invasion Mode	Rxo>Rt	
DSR1	Deep Sigma Reference (10 kHz)	7637	MM/M
DSR2	Deep Sigma Reference (20 kHz)	1843	MM/M
DSR4	Deep Sigma Reference (40 kHz)	405	MM/M
DSTA	DIT-E Transversal Standoff	0	IN
DXE1	Deep Quad 10 kHz Sonde Error Correction	100.491	MM/M
DXE2	Deep Quad 20 kHz Sonde Error Correction	62.191	MM/M
DXE4	Deep Quad 40 kHz Sonde Error Correction	44.6702	MM/M
GCSE	Generalized Caliper Selection	BS	
GDEV	Average Angular Deviation of Borehole from Normal	0	DEG
GGRD	Geothermal Gradient	0.01	DF/F
GRSE	Generalized Mud Resistivity Selection	CHART_GEN_9	
GTSE	Generalized Temperature Selection	LINEAR_ESTIMATE	
IFRS	DIT-E Induction Frequency Selector	20	
IPHA	DIT-E Phasor Processing Mode	ALL	
IPRO	DIT-E Induction Processing Selector	PHASOR	
ISSBAR	Barite Mud Switch	NOBARITE	
ITEN	DIT-E Temperature Enable	ENABLE	
MATR	Rock Matrix for Neutron Porosity Corrections	LIMESTONE	
MGF1	Medium 10 kHz Gain Factor	1.00192	
MGF2	Medium 20 kHz Gain Factor	1.01122	
MGF4	Medium 40 kHz Gain Factor	1.04786	
MPH1	Medium 10 kHz Phase Shift	0.190245	DEG
MPH2	Medium 20 kHz Phase Shift	-0.139176	DEG
MPH4	Medium 40 kHz Phase Shift	-1.01614	DEG
MRE1	Medium Real 10 kHz Sonde Error Correction	17.1122	MM/M
MRE2	Medium Real 20 kHz Sonde Error Correction	-2.07993	MM/M
MRE4	Medium Real 40 kHz Sonde Error Correction	-9.895	MM/M
MSR1	Medium Sigma Reference (10 kHz)	13520	MM/M
MSR2	Medium Sigma Reference (20 kHz)	3250	MM/M
MSR4	Medium Sigma Reference (40 kHz)	685	MM/M
MXE1	Medium Quad 10 kHz Sonde Error Correction	-94.7355	MM/M
MXE2	Medium Quad 20 kHz Sonde Error Correction	-32.0861	MM/M
MXE4	Medium Quad 40 kHz Sonde Error Correction	12.9006	MM/M
SBR	Shoulder Bed Resistivity Factor	1	OHMM
SFCR	SFL Channel Ratio	1000	
SFLE	SFL Enable	ENABLE	
SHT	Surface Hole Temperature	68	DEGF
SPAE	DIT-E SPARC Processing Enable	ENABLE	
SPNV	SP Next Value	0	MV
GPIT-A/B: General Purpose Inclinometer			
ACPP	Accelerometer PROM Presence	PRESENT	
AFMO	Accelerometer Filtering Mode	MOVING_AVERAGE	
ART	Accelerometer Reference Temperature	20	DEGC
GLM	GPIT Logging Mode	DIPM	
ICMO	Inclinometry Computation Mode	AUTOMATIC_SELECTION	
MAPP	Magnetometer PROM Presence	PRESENT	
MDEC	Magnetic Field Declination	9.45417	DEG
MRTE	Magneto Reference Temperature	23	DEGC
TEMS	GPIT Temperature Sensor Used	BOTH	
U-GPOF	Playback OLD VERSION GPIT FILE (BEFORE OP14 + SRPC-3098-FEB_2006_C) ?	NO	

APS-C: Accelerator-Porosity Tool

AASD	APS Software Version	5	
ADSO	APS Thermal and Array Detectors High Voltage Setting	1965.7	V
AFSD	APS Array Detectors Data Source Switch	Both	
AHCS	APS Far Detector High Voltage Setting	2077.27	V
AHSS	APS Holesize Correction Source	BS	
AMTY	APS Holesize Correction Switch	ON	
ANSD	APS Environmental Corrections Mud Type	WaterBaseBarite	
ASOS	APS Near Detector High Voltage Setting	1732.81	V
ATSS	APS Standoff Correction Switch	ON	
BHFL_APS	APS Temperature-Pressure-Salinity Correction Switch	ON	
BHS	APS TNPH Borehole Fluid Type	WATER	
BHT	Borehole Status	OPEN	
BSCO_APS	Bottom Hole Temperature (used in calculations)	60	DEGF
DPPM	APS TNPH Borehole Salinity Correction Option	YES	
DSCO_APS	Density Porosity Processing Mode	HIRS	
FSAL	APS TNPH Density Source	COMPUTED	
FSCAL_APS	Formation Salinity	-50000	PPM
GCSE	APS TNPH Formation Salinity Correction Option	NO	
GDEV	Generalized Caliper Selection	BS	
GGRD	Average Angular Deviation of Borehole from Normal	0	DEG
GRSE	Geothermal Gradient	0.01	DF/F
GTSE	Generalized Mud Resistivity Selection	CHART_GEN_9	
HSCO_APS	Generalized Temperature Selection	LINEAR_ESTIMATE	
ISSBAR	APS TNPH Hole Size Correction Option	YES	
MATR	Barite Mud Switch	NOBARITE	
MCCO_APS	Rock Matrix for Neutron Porosity Corrections	LIMESTONE	
	APS TNPH Mud Cake Correction Option	YES	

MCOR_APS	APC TNPB Mud Weight Correction Option	NATU	
MWCO_APS	APC TNPB Mud Weight Correction Option	YES	
NARC	APC Near/Array Calibration Ratio	1.05904	
NFRC	APC Near/Far Calibration Ratio	0.885245	
PTCO_APS	APC TNPB Pressure/Temperature Correction Option	YES	
SHT	Surface Hole Temperature	68	DEGF
TNCO_APS	APC TNPB Computation Option	NO	
HLDS: Hostile Litho-Density Sonde			
CLCL	HLDS LS Control Loop Controller Mode	AUTO_DEFAULT	
CLCS	HLDS SS Control Loop Controller Mode	AUTO_DEFAULT	
CLLS	HLDS Mode Loop Long Spacing	AUTO	
CLSS	HLDS Mode Loop Short Spacing	AUTO	
DHC	Density Hole Correction	BS	
DPPM	Density Porosity Processing Mode	HIRS	
FD	Fluid Density	1	G/C3
LATC	HLDS Activation Correction	OFF	
LLDL	HLDS LS Low Level Discriminator DAC	14000	
LLDS	HLDS SS Low Level Discriminator DAC	14000	
LLML	HLDS LS Low Level Discriminator Mode	AUTO	
LLMS	HLDS SS Low Level Discriminator Mode	AUTO	
MDEN	Matrix Density	2.71	G/C3
PHVL	HLDS Long Spacing High Voltage Setting	1000	V
PHVS	HLDS Short Spacing High Voltage Setting	1000	V
PSDL	HLDS LS Pulse Shape Compensation DAC	30000	
PSDS	HLDS SS Pulse Shape Compensation DAC	30000	
PSML	HLDS LS Pulse Shape Compensation Mode	AUTO	
PSMS	HLDS SS Pulse Shape Compensation Mode	AUTO	
HNGS-BA: Hostile Natural Gamma Ray Sonde			
BAR1	HNGS Detector 1 Barite Constant	1	
BAR2	HNGS Detector 2 Barite Constant	1	
BHK	HNGS Borehole Potassium Correction Concentration	0	
BHS	Borehole Status	OPEN	
BHT	Bottom Hole Temperature (used in calculations)	60	DEGF
CSD1	Inner Casing Outer Diameter	0	IN
CSD2	Outer Casing Outer Diameter	0	IN
CSW1	Inner Casing Weight	0	LB/F
CSW2	Outer Casing Weight	0	LB/F
DBCC	HNGS Barite Constant Correction Flag	NONE	
GCSE	Generalized Caliper Selection	BS	
GDEV	Average Angular Deviation of Borehole from Normal	0	DEG
GGRD	Geothermal Gradient	0.01	DF/F
GRSE	Generalized Mud Resistivity Selection	CHART_GEN_9	
GTSE	Generalized Temperature Selection	LINEAR_ESTIMATE	
H1P	HNGS Detector 1 Allow/Disallow In Processing	ALLOW	
H2P	HNGS Detector 2 Allow/Disallow In Processing	ALLOW	
HABK	HNGS Borehole Potassium Running Average	-0.0037547	
HALF	HNGS Alpha Filter Length	60	IN
HCRB	HNGS Apply Borehole Potassium Correction	NONE	
HMWM	Mud Weighting Material	BARI	
HNPE	HNGS Processing Enable	YES	
ISSBAR	Barite Mud Switch	NOBARITE	
MATR	Rock Matrix for Neutron Porosity Corrections	LIMESTONE	
S1BI	HNGS Detector 1 Calibration Bismuth Count Rate	1.3	CPS
S2BI	HNGS Detector 2 Calibration Bismuth Count Rate	1.3	CPS
SGRC	HNGS Standard Gamma-Ray Correction Flag	YES	
SHT	Surface Hole Temperature	68	DEGF
TPOS	Tool Position	ECCE	
VBA1	HNGS Detector 1 Variable Barite Factor Running Average	0.939679	
VBA2	HNGS Detector 2 Variable Barite Factor Running Average	0.932543	
DIR: Directional Survey Computation			
SPED	East Departure of Starting Point	0	M
SPND	North Departure of Starting Point	0	M
SPVD	TVD of Starting Point	0	M
TAZI	Vertical Section Azimuth	0	DEG
TIED	East Departure of Tie-in Point	0	M
TIMD	Along-hole depth of Tie-in Point	0	M
TIND	North Departure of Tie-in Point	0	M
TIVD	TVD of Tie-in Point	0	M
System and Miscellaneous			
ALTDPCHAN	Name of alternate depth channel	SpeedCorrectedDepth	
BS	Bit Size	11.438	IN
BSAL	Borehole Salinity	-50000.00	PPM
CSIZ	Current Casing Size	4.500	IN
CWEI	Casing Weight	0.00	LB/F
DFD	Drilling Fluid Density	1.26	G/C3
DO	Depth Offset for Playback	0.0	M
FLEV	Fluid Level	-50000.00	M
MST	Mud Sample Temperature	-50000.00	DEGC
PBVSADP	Use alternate depth channel for playback	NO	
PP	Playback Processing	RECOMPUTE	
RMFS	Resistivity of Mud Filtrate Sample	-50000.0000	OHMM
RW	Resistivity of Connate Water	1.0000	OHMM
TD	Total Depth	4650	M
TDD	Total Depth - Driller	2079.40	M
TDL	Total Depth - Logger	2079.40	M

OP System Version: 17C0-154

DIT-E	17C0-154	GPIT-A/B	SRPC-3762-Q1_2009_OP17
DTA-A	17C0-154	APS-C	17C0-154
HLDS	17C0-154	LDSC-B	17C0-154
HNGC-B	17C0-154	HNGS-BA	17C0-154
DTC-H	17C0-154		

Input DLIS Files

DEFAULT	PI_APS_LDL_NGS_016LUP	FN:19	PRODUCER	20-Jul-2009 16:47	2082.5 M	1843.7 M
---------	-----------------------	-------	----------	-------------------	----------	----------

Output DLIS Files

DEFAULT	PI_APS_LDL_NGS_045PUP	FN:50	PRODUCER	21-Jul-2009 16:48		
---------	-----------------------	-------	----------	-------------------	--	--



**Repeat Pass
OH Only**

MAXIS Field Log

Input DLIS Files

DEFAULT	PI_APS_LDL_NGS_014LUP	FN:15	PRODUCER	20-Jul-2009 15:49	2082.5 M	2000.9 M
---------	-----------------------	-------	----------	-------------------	----------	----------

Output DLIS Files

DEFAULT	PI_APS_LDL_NGS_050PUP	FN:1	PRODUCER	23-Aug-2009 10:09	2082.5 M	2001.0 M
---------	-----------------------	------	----------	-------------------	----------	----------

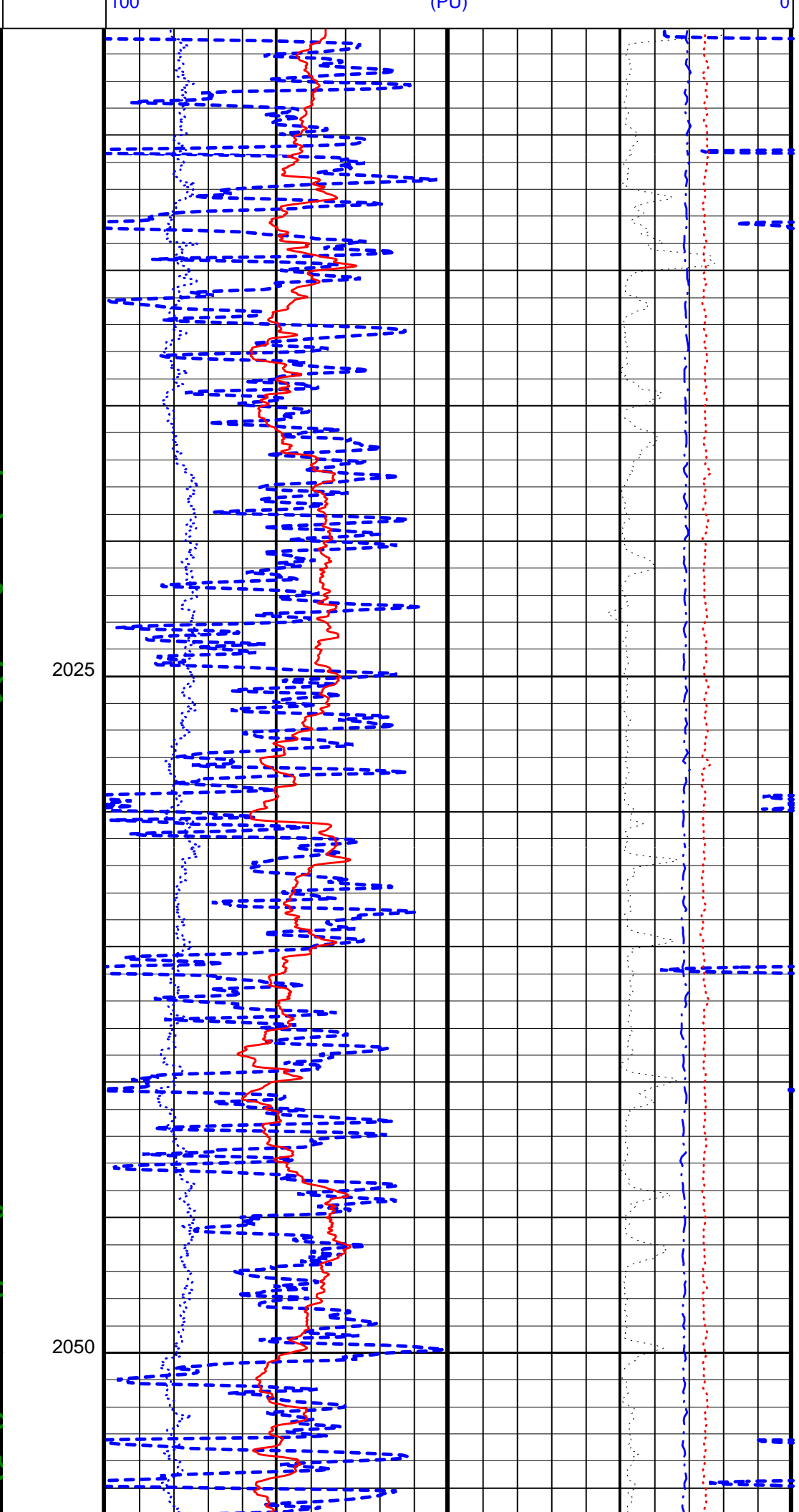
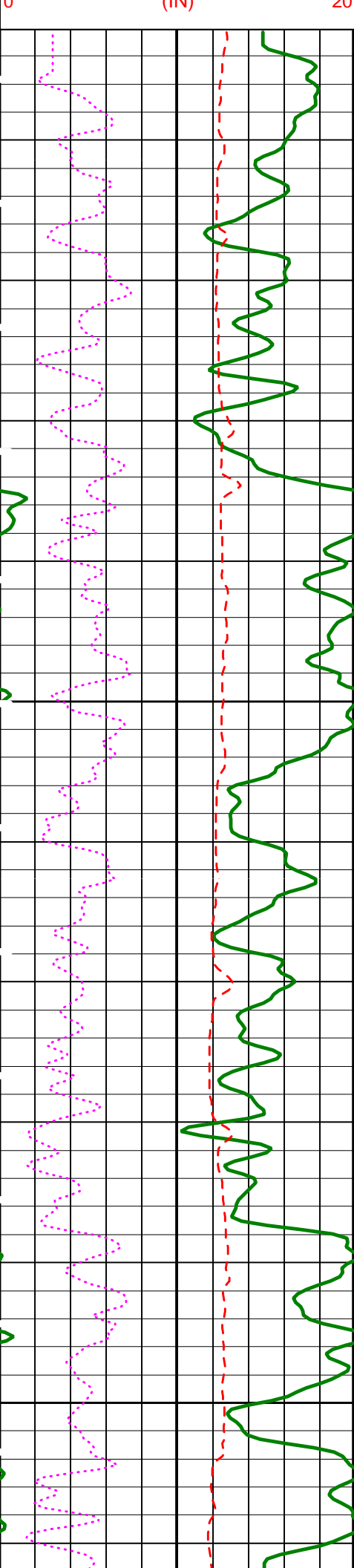
OP System Version: 17C0-154

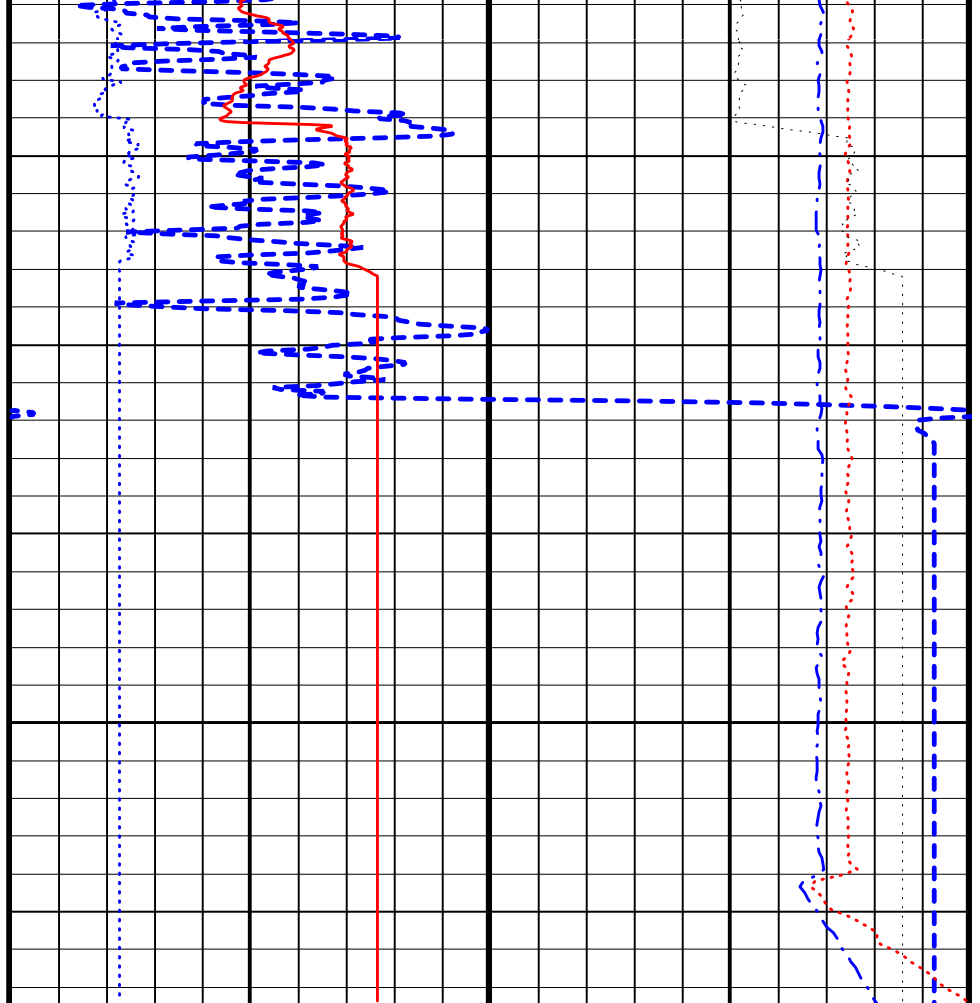
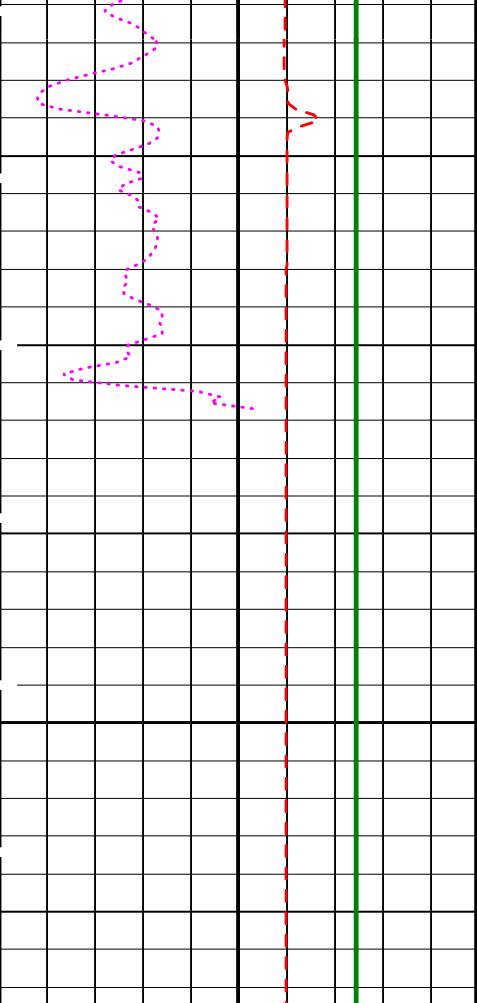
DIT-E	17C0-154	GPIT-A/B	SRPC-3762-Q1_2009_OP17
DTA-A	17C0-154	APS-C	17C0-154
HLDS	17C0-154	LDSC-B	17C0-154
HNGC-B	17C0-154	HNGS-BA	17C0-154
DTC-H	17C0-154		

PIP SUMMARY

▶ Time Mark Every 60 S

		HLDS HR Bulk Density Correction (HBDC) (G/C3)		-0.25	0.25
		Tension (TENS) (LBF)		10000	0
HNGS Spectroscopy Gamma Ray (HSGR) (GAPI)		HLDS HR Long Spaced Photoelectric Effect (HLEF) (---)		0	10
APS Effective Standoff in Limestone (STOF) (IN)		Calibrated Downhole Force (CDF) (LBF)		5000	0
HLDS Caliper (LCAL) (IN)		HLDS HR Bulk Density (HROM) (G/C3)		1	3
		APS HR Near/Far Corrected Limestone Porosity (HFLC) (PL)		100	0





HLDS Caliper (LCAL) (IN)	0	20
APS Effective Standoff in Limestone (STOF) (IN)	-1	4
HNGS Spectroscopy Gamma Ray (HSGR) (GAPI)	0	50

APS HR Near/Far Corrected Limestone Porosity (HFLC) (PU)	100	0
HLDS HR Bulk Density (HROM) (G/C3)	1	3
HLDS HR Long Spaced Photoelectric Effect (HLEF) (---)	0	10
Calibrated Downhole Force (CDF) (LBF)	5000	0
Tension (TENS) (LBF)	10000	0
HLDS HR Bulk Density Correction (HBDC) (G/C3)	-0.25	0.25

PIP SUMMARY

Time Mark Every 60 S

Parameters

DLIS Name	Description	Value
DIT-E: Dual Induction - E		
BHS	Borehole Status	OPEN
BHT	Bottom Hole Temperature (used in calculations)	60 DEG F
DGF1	Deep 10 kHz Gain Factor	0.968036
DGF2	Deep 20 kHz Gain Factor	0.981641
DGF4	Deep 40 kHz Gain Factor	1.00354
DPH1	Deep 10 kHz Phase Shift	0.519505 DEG
DPH2	Deep 20 kHz Phase Shift	0.58231 DEG
DPH4	Deep 40 kHz Phase Shift	-0.0231022 DEG
DRE1	Deep Real 10 kHz Sonde Error Correction	47.0269 MM/M
DRE2	Deep Real 20 kHz Sonde Error Correction	16.7871 MM/M
DRE4	Deep Real 40 kHz Sonde Error Correction	5.70109 MM/M
DRIM	DIT-E Radial Invasion Mode	Rxo>Rt
DSR1	Deep Sigma Reference (10 kHz)	7637 MM/M

DSR2	Deep Sigma Reference (20 kHz)	1843	MM/M
DSR4	Deep Sigma Reference (40 kHz)	405	MM/M
DSTA	DIT-E Transversal Standoff	0	IN
DXE1	Deep Quad 10 kHz Sonde Error Correction	100.491	MM/M
DXE2	Deep Quad 20 kHz Sonde Error Correction	62.191	MM/M
DXE4	Deep Quad 40 kHz Sonde Error Correction	44.6702	MM/M
GCSE	Generalized Caliper Selection	BS	
GDEV	Average Angular Deviation of Borehole from Normal	0	DEG
GGRD	Geothermal Gradient	0.01	DF/F
GRSE	Generalized Mud Resistivity Selection	CHART_GEN_9	
GTSE	Generalized Temperature Selection	LINEAR_ESTIMATE	
IFRS	DIT-E Induction Frequency Selector	20	
IPHA	DIT-E Phasor Processing Mode	ALL	
IPRO	DIT-E Induction Processing Selector	PHASOR	
ISSBAR	Barite Mud Switch	NOBARITE	
ITEN	DIT-E Temperature Enable	ENABLE	
MATR	Rock Matrix for Neutron Porosity Corrections	LIMESTONE	
MGF1	Medium 10 kHz Gain Factor	1.00192	
MGF2	Medium 20 kHz Gain Factor	1.01122	
MGF4	Medium 40 kHz Gain Factor	1.04786	
MPH1	Medium 10 kHz Phase Shift	0.190245	DEG
MPH2	Medium 20 kHz Phase Shift	-0.139176	DEG
MPH4	Medium 40 kHz Phase Shift	-1.01614	DEG
MRE1	Medium Real 10 kHz Sonde Error Correction	17.1122	MM/M
MRE2	Medium Real 20 kHz Sonde Error Correction	-2.07993	MM/M
MRE4	Medium Real 40 kHz Sonde Error Correction	-9.895	MM/M
MSR1	Medium Sigma Reference (10 kHz)	13520	MM/M
MSR2	Medium Sigma Reference (20 kHz)	3250	MM/M
MSR4	Medium Sigma Reference (40 kHz)	685	MM/M
MXE1	Medium Quad 10 kHz Sonde Error Correction	-94.7355	MM/M
MXE2	Medium Quad 20 kHz Sonde Error Correction	-32.0861	MM/M
MXE4	Medium Quad 40 kHz Sonde Error Correction	12.9006	MM/M
SBR	Shoulder Bed Resistivity Factor	1	OHMM
SFCR	SFL Channel Ratio	1000	
SFLE	SFL Enable	ENABLE	
SHT	Surface Hole Temperature	68	DEGF
SPAE	DIT-E SPARC Processing Enable	ENABLE	
SPNV	SP Next Value	0	MV

GPIT-A/B: General Purpose Inclinometer

ACPP	Accelerometer PROM Presence	PRESENT	
AFMO	Accelerometer Filtering Mode	MOVING_AVERAGE	
ART	Accelerometer Reference Temperature	20	DEGC
GLM	GPIT Logging Mode	DIPM	
ICMO	Inclinometry Computation Mode	AUTOMATIC_SELECTION	
MAPP	Magnetometer PROM Presence	PRESENT	
MDEC	Magnetic Field Declination	9.45417	DEG
MRTE	Magneto Reference Temperature	23	DEGC
TEMS	GPIT Temperature Sensor Used	BOTH	
U-GPOF	Playback OLD VERSION GPIT FILE (BEFORE OP14 + SRPC-3098-FEB_2006_C) ?	NO	

APS-C: Accelerator-Porosity Tool

AASD	APS Software Version	0	
ADSO	APS Thermal and Array Detectors High Voltage Setting	1965.7	V
AFSD	APS Array Detectors Data Source Switch	Both	
AHCS	APS Far Detector High Voltage Setting	2077.27	V
AHSS	APS Holesize Correction Source	BS	
AMTY	APS Holesize Correction Switch	ON	
ANSD	APS Environmental Corrections Mud Type	WaterBaseBarite	
ASOS	APS Near Detector High Voltage Setting	1732.81	V
ATSS	APS Standoff Correction Switch	ON	
BHFL_APS	APS Temperature-Pressure-Salinity Correction Switch	ON	
BHS	APS TNPH Borehole Fluid Type	WATER	
BHT	Borehole Status	OPEN	
BSCO_APS	Bottom Hole Temperature (used in calculations)	60	DEGF
DPPM	APS TNPH Borehole Salinity Correction Option	YES	
DSCO_APS	Density Porosity Processing Mode	HIRS	
FSAL	APS TNPH Density Source	COMPUTED	
FSCO_APS	Formation Salinity	-50000	PPM
GCSE	APS TNPH Formation Salinity Correction Option	NO	
GDEV	Generalized Caliper Selection	BS	
GGRD	Average Angular Deviation of Borehole from Normal	0	DEG
GRSE	Geothermal Gradient	0.01	DF/F
GTSE	Generalized Mud Resistivity Selection	CHART_GEN_9	
HSCO_APS	Generalized Temperature Selection	LINEAR_ESTIMATE	
ISSBAR	APS TNPH Hole Size Correction Option	YES	
MATR	Barite Mud Switch	NOBARITE	
MCCO_APS	Rock Matrix for Neutron Porosity Corrections	LIMESTONE	
MCOR_APS	APS TNPH Mud Cake Correction Option	YES	
MWCO_APS	APS TNPH Mud Correction	NATU	
NARC	APS TNPH Mud Weight Correction Option	YES	
NFRC	APS Near/Array Calibration Ratio	1.05904	
PTCO_APS	APS Near/Far Calibration Ratio	0.885245	
SHT	APS TNPH Pressure/Temperature Correction Option	YES	
TNCO_APS	Surface Hole Temperature	68	DEGF
	APS TNPH Computation Option	NO	

Parameter	Description	Value	Units
HLDS: Hostile Litho-Density Sonde			
CLCL	HLDS LS Control Loop Controller Mode	AUTO_DEFAULT	
CLCS	HLDS SS Control Loop Controller Mode	AUTO_DEFAULT	
CLLS	HLDS Mode Loop Long Spacing	AUTO	
CLSS	HLDS Mode Loop Short Spacing	AUTO	
DHC	Density Hole Correction	BS	
DPPM	Density Porosity Processing Mode	HIRS	
FD	Fluid Density	1	G/C3
LATC	HLDS Activation Correction	OFF	
LLDL	HLDS LS Low Level Discriminator DAC	14000	
LLDS	HLDS SS Low Level Discriminator DAC	14000	
LLML	HLDS LS Low Level Discriminator Mode	AUTO	
LLMS	HLDS SS Low Level Discriminator Mode	AUTO	
MDEN	Matrix Density	2.71	G/C3
PHVL	HLDS Long Spacing High Voltage Setting	1000	V
PHVS	HLDS Short Spacing High Voltage Setting	1000	V
PSDL	HLDS LS Pulse Shape Compensation DAC	30000	
PSDS	HLDS SS Pulse Shape Compensation DAC	30000	
PSML	HLDS LS Pulse Shape Compensation Mode	AUTO	
PSMS	HLDS SS Pulse Shape Compensation Mode	AUTO	
HNGS-BA: Hostile Natural Gamma Ray Sonde			
BAR1	HNGS Detector 1 Barite Constant	1	
BAR2	HNGS Detector 2 Barite Constant	1	
BHK	HNGS Borehole Potassium Correction Concentration	0	
BHS	Borehole Status	OPEN	
BHT	Bottom Hole Temperature (used in calculations)	60	DEGF
CSD1	Inner Casing Outer Diameter	0	IN
CSD2	Outer Casing Outer Diameter	0	IN
CSW1	Inner Casing Weight	0	LB/F
CSW2	Outer Casing Weight	0	LB/F
DBCC	HNGS Barite Constant Correction Flag	NONE	
GCSE	Generalized Caliper Selection	BS	
GDEV	Average Angular Deviation of Borehole from Normal	0	DEG
GGRD	Geothermal Gradient	0.01	DF/F
GRSE	Generalized Mud Resistivity Selection	CHART_GEN_9	
GTSE	Generalized Temperature Selection	LINEAR_ESTIMATE	
H1P	HNGS Detector 1 Allow/Disallow In Processing	ALLOW	
H2P	HNGS Detector 2 Allow/Disallow In Processing	ALLOW	
HABK	HNGS Borehole Potassium Running Average	-0.000399859	
HALF	HNGS Alpha Filter Length	60	IN
HCRB	HNGS Apply Borehole Potassium Correction	NONE	
HMWM	Mud Weighting Material	BARI	
HNPE	HNGS Processing Enable	YES	
ISSBAR	Barite Mud Switch	NOBARITE	
MATR	Rock Matrix for Neutron Porosity Corrections	LIMESTONE	
S1BI	HNGS Detector 1 Calibration Bismuth Count Rate	1.3	CPS
S2BI	HNGS Detector 2 Calibration Bismuth Count Rate	1.3	CPS
SGRC	HNGS Standard Gamma-Ray Correction Flag	YES	
SHT	Surface Hole Temperature	68	DEGF
TPOS	Tool Position	ECCE	
VBA1	HNGS Detector 1 Variable Barite Factor Running Average	6.70686	
VBA2	HNGS Detector 2 Variable Barite Factor Running Average	7.126	
DIR: Directional Survey Computation			
SPED	East Departure of Starting Point	0	M
SPND	North Departure of Starting Point	0	M
SPVD	TVD of Starting Point	0	M
TAZI	Vertical Section Azimuth	0	DEG
TIED	East Departure of Tie-in Point	0	M
TIMD	Along-hole depth of Tie-in Point	0	M
TIND	North Departure of Tie-in Point	0	M
TIVD	TVD of Tie-in Point	0	M
System and Miscellaneous			
ALTDPCCHAN	Name of alternate depth channel	SpeedCorrectedDepth	
BS	Bit Size	11.438	IN
BSAL	Borehole Salinity	-50000.00	PPM
CSIZ	Current Casing Size	4.500	IN
CWEI	Casing Weight	0.00	LB/F
DFD	Drilling Fluid Density	1.26	G/C3
DO	Depth Offset for Playback	0.0	M
FLEV	Fluid Level	-50000.00	M
MST	Mud Sample Temperature	-50000.00	DEGC
PBVSADP	Use alternate depth channel for playback	NO	
PP	Playback Processing	NORMAL	
RMFS	Resistivity of Mud Filtrate Sample	-50000.0000	OHMM
RW	Resistivity of Connate Water	1.0000	OHMM
TD	Total Depth	4650	M
TDD	Total Depth - Driller	2079.40	M
TDL	Total Depth - Logger	2079.40	M
TWS	Temperature of Connate Water Sample	37.78	DEGC

DIT-E 17C0-154
 DTA-A 17C0-154
 HLDS 17C0-154
 HNGC-B 17C0-154
 DTC-H 17C0-154

GPIT-A/B
 APS-C
 LDSC-B
 HNGS-BA

SRPC-3762-Q1_2009_OP17
 17C0-154
 17C0-154
 17C0-154

Input DLIS Files

DEFAULT PI_APS_LDL_NGS_014LUP FN:15 PRODUCER 20-Jul-2009 15:49 2082.5 M 2000.9 M

Output DLIS Files

DEFAULT PI_APS_LDL_NGS_050PUP FN:1 PRODUCER 23-Aug-2009 10:09



Calibrations

MAXIS Field Log

Calibration and Check Summary

Measurement	Nominal	Master	Before	After	Change	Limit	Units
General Purpose Inclinerometer Wellsite Calibration - CROUZET ACCELEROMETER PROM HAS BEEN READ CORRECTLY							
Before: 20-Jul-2009 13:03							
TEMPERATURE REFERENCE :	N/A	N/A	20	N/A	N/A	N/A	DEGC
YEAR OF CALIBRATION :	N/A	N/A	99	N/A	N/A	N/A	
MONTH OF CALIBRATION :	N/A	N/A	3	N/A	N/A	N/A	
SERIAL NUMBER :	N/A	N/A	743	N/A	N/A	N/A	
General Purpose Inclinerometer Wellsite Calibration - CROUZET MAGNETOMETER PROM HAS BEEN READ CORRECTLY							
Before: 20-Jul-2009 13:03							
TEMPERATURE REFERENCE :	N/A	N/A	23	N/A	N/A	N/A	DEGC
YEAR OF CALIBRATION :	N/A	N/A	3	N/A	N/A	N/A	
MONTH OF CALIBRATION :	N/A	N/A	9	N/A	N/A	N/A	
SERIAL NUMBER :	N/A	N/A	507	N/A	N/A	N/A	
Accelerator-Porosity Tool Wellsite Calibration - Detector Background							
Master: 18-Jun-2009 23:03 Before: 20-Jul-2009 13:08 After: 20-Jul-2009 17:38							
Near Det Bkg Cntrate	30.00	32.09	31.37	31.94	0.5673	N/A	CPS
Far Det Bkg Cntrate	30.00	31.69	32.54	32.77	0.2337	N/A	CPS
Array-1 Det Bkg Cntrate	30.00	28.61	27.80	29.25	1.451	N/A	CPS
Array-2 Det Bkg Cntrate	30.00	30.40	30.03	31.65	1.618	N/A	CPS
Array Therm Det Bkg Cntrate	30.00	32.33	32.93	31.09	-1.838	N/A	CPS
Accelerator-Porosity Tool Wellsite Calibration - Calibration Ratios							
Master: 18-Jun-2009 23:03							
Near/Far Calibration Ratio	0.9250	0.8852	N/A	N/A	N/A	N/A	
Near/Array Calibration Ratio	1.030	1.059	N/A	N/A	N/A	N/A	
Near/Array Cal Ratio Up/Down	1.000	1.008	N/A	N/A	N/A	N/A	
Accelerator-Porosity Tool Wellsite Calibration - Tank Check							
Master: 18-Jun-2009 23:03							
Array-1 Standoff Porosity	11.75	11.81	N/A	N/A	N/A	N/A	PU
Array-2 Standoff Porosity	11.75	11.56	N/A	N/A	N/A	N/A	PU
Average Slowing Down Time	6.000	5.860	N/A	N/A	N/A	N/A	US
Array-1 SDT Ratio Up/Down	1.000	0.9891	N/A	N/A	N/A	N/A	
Array-2 SDT Ratio Up/Down	1.000	1.006	N/A	N/A	N/A	N/A	
Sigma Formation	27.50	27.25	N/A	N/A	N/A	N/A	CU
Accelerator-Porosity Tool Wellsite Calibration - CCR7 signal boxes							
Master: 18-Jun-2009 23:03							
Near Detector Plateau Setting	1650	1733	N/A	N/A	N/A	N/A	V
Far Detector Plateau Setting	2000	2077	N/A	N/A	N/A	N/A	V

Far Detector Plateau Setting	2000	1966	N/A	N/A	N/A	N/A	N/A	V
Hostile Litho-Density Sonde Wellsite Calibration - Background Measurement								
Master: 30-Jun-2009 23:48 Before: 20-Jul-2009 13:08 After: 20-Jul-2009 18:59								
SS Cs Resolution Bkg	9.000	7.767	7.806	7.745	-0.06060	1.800	%	
LS Cs Resolution Bkg	9.000	7.963	8.085	8.100	0.01494	1.800	%	
LSW1 Background	100.0	92.51	92.08	91.98	-0.09248	3.000	CPS	
LSW2 Background	100.0	83.43	83.95	83.01	-0.9406	3.000	CPS	
LSW3 Background	200.0	192.3	191.3	190.1	-1.184	6.000	CPS	
LSW4 Background	250.0	236.2	234.1	234.4	0.2898	7.500	CPS	
LSW5 Background	600.0	548.3	547.2	549.3	2.092	18.00	CPS	
SSW1 Background	100.0	90.55	89.75	90.65	0.9009	3.000	CPS	
SSW2 Background	200.0	155.0	153.6	155.5	1.867	6.000	CPS	
SSW3 Background	500.0	433.9	431.7	435.0	3.271	15.00	CPS	
SSW4 Background	270.0	232.2	233.1	232.3	-0.8222	8.100	CPS	
SSW5 Background	200.0	167.8	165.5	166.9	1.349	6.000	CPS	
Hostile Litho-Density Sonde Wellsite Calibration - Aluminum Measurement								
Master: 30-Jun-2009 23:48								
LSW1 Aluminum	600.0	554.7	N/A	N/A	N/A	N/A	CPS	
LSW2 Aluminum	900.0	804.9	N/A	N/A	N/A	N/A	CPS	
LSW3 Aluminum	1100	966.0	N/A	N/A	N/A	N/A	CPS	
LSW4 Aluminum	580.0	485.4	N/A	N/A	N/A	N/A	CPS	
LSW5 Aluminum	570.0	446.3	N/A	N/A	N/A	N/A	CPS	
SSW1 Aluminum	2800	2501	N/A	N/A	N/A	N/A	CPS	
SSW2 Aluminum	8000	6891	N/A	N/A	N/A	N/A	CPS	
SSW3 Aluminum	11600	9659	N/A	N/A	N/A	N/A	CPS	
SSW4 Aluminum	5000	3955	N/A	N/A	N/A	N/A	CPS	
SSW5 Aluminum	660.0	474.6	N/A	N/A	N/A	N/A	CPS	
Hostile Litho-Density Sonde Wellsite Calibration - Lithology Measurement								
Master: 30-Jun-2009 23:48								
LSW1 Iron	400.0	378.8	N/A	N/A	N/A	N/A	CPS	
LSW2 Iron	730.0	651.5	N/A	N/A	N/A	N/A	CPS	
LSW3 Iron	1000	856.2	N/A	N/A	N/A	N/A	CPS	
LSW4 Iron	520.0	445.8	N/A	N/A	N/A	N/A	CPS	
LSW5 Iron	470.0	411.6	N/A	N/A	N/A	N/A	CPS	
SSW1 Iron	2100	1825	N/A	N/A	N/A	N/A	CPS	
SSW2 Iron	6800	5726	N/A	N/A	N/A	N/A	CPS	
SSW3 Iron	10800	8806	N/A	N/A	N/A	N/A	CPS	
SSW4 Iron	4600	3618	N/A	N/A	N/A	N/A	CPS	
SSW5 Iron	580.0	422.6	N/A	N/A	N/A	N/A	CPS	
Hostile Litho-Density Sonde Wellsite Calibration - Caliper Calibration								
Before: 16-Jul-2009 10:33								
HLDS Caliper Small Ring	12.00	N/A	13.30	N/A	N/A	N/A	IN	
HLDS Caliper Large Ring	15.19	N/A	16.70	N/A	N/A	N/A	IN	
Hostile Natural Gamma Ray Sonde Wellsite Calibration - Detector 1 Check								
Master: 19-Jun-2009 22:52 Before: 20-Jul-2009 13:09 After: 20-Jul-2009 19:00								
Na 511 Peak Loc	40.00	39.80	39.59	39.67	0.07829	1.000		
Na 511 Peak Res	15.50	15.76	14.50	14.70	0.1987	2.000	%	
High Voltage	1150	1181	1139	1143	3.388	N/A	V	
Na 1785 Peak Loc	142.6	142.6	142.5	142.3	-0.2723	7.000		
Na 1785 Peak Res	8.500	8.553	8.452	7.811	-0.6412	2.000	%	
Temperature	15.50	32.22	13.11	13.11	0.006503	N/A	DEGC	
Na Count Rate	45.00	37.08	36.43	36.67	0.2406	8.000	CPS	
Hostile Natural Gamma Ray Sonde Wellsite Calibration - Detector 2 Check								
Master: 19-Jun-2009 22:52 Before: 20-Jul-2009 13:09 After: 20-Jul-2009 19:00								
Na 511 Peak Loc	40.00	39.62	39.67	39.65	-0.01482	1.000		
Na 511 Peak Res	15.50	16.69	15.09	15.03	-0.05972	2.000	%	
High Voltage	1150	1114	1076	1078	1.726	N/A	V	
Na 1785 Peak Loc	142.6	142.4	141.6	141.7	0.05783	7.000		
Na 1785 Peak Res	8.500	8.478	8.319	8.013	-0.3059	2.000	%	
Temperature	15.50	32.71	13.07	14.40	1.323	N/A	DEGC	
Na Count Rate	45.00	38.14	36.44	36.87	0.4300	8.000	CPS	
Hostile Natural Gamma Ray Sonde Wellsite Calibration - Ratio Of Detector 1 To Detector 2								
Master: 19-Jun-2009 22:52 Before: 20-Jul-2009 13:09 After: 20-Jul-2009 19:00								
Coincidence Count Rate Ratio	1.000	0.9751	1.001	0.9950	-0.006335	0.05000		

Accelerator-Porosity Tool - Detector Plateau Settings :

Near Detector Plateau Setting 1733 V
Far Detector Plateau Setting 2077 V
Array Detector Plateau Setting 1966 V

Phase	IM Elect Quad Onset 40 KHz	MM/M	Value	Phase	IM Elect Quad Gain 40 KHz	Value	
Before			25.94	Before		1.029	
	-103.7 (Minimum)	26.25 (Nominal)	156.3 (Maximum)		0.8652 (Minimum)	1.015 (Nominal)	1.221 (Maximum)

Before: 20-Jul-2009 14:42

Dual Induction - E Wellsite Calibration						
SFL Electronics						
Phase	SFL Voltage Offset MV	Value	Phase	SFL Voltage Gain	Value	
Before		1.179	Before		1.013	
	-15.00 (Minimum)	0 (Nominal)	15.00 (Maximum)	0.8500 (Minimum)	1.000 (Nominal)	1.200 (Maximum)
Phase	SFL Current Offset MA	Value	Phase	SFL Current Gain	Value	
Before		0.009003	Before		0.9924	
	-0.6000 (Minimum)	0 (Nominal)	0.6000 (Maximum)	0.8500 (Minimum)	1.000 (Nominal)	1.200 (Maximum)

Before: 20-Jul-2009 14:42

Dual Induction - E Wellsite Calibration											
Electronics Calibration Changes Files/Depth Intervals: 8: 12191.2 - 12008.4 13: 2009.4 - 2082.1 14: 2082.5 - 2001.0 15: 1995.7 - 1920.7											
Phase	ID (R > 27 OHM-M)	MM/M	Value	Phase	ID (R < 27 OHM-M) %	Value	Phase	SFL (R < 1 OHM-M)	OHMM	Value	
After			0.07394	After		0	After			0.0008669	
	0 (Minimum)	0 (Nominal)	0.7500 (Maximum)		0 (Minimum)	0 (Nominal)	2.000 (Maximum)		0 (Minimum)	0 (Nominal)	0.02000 (Maximum)
Phase	IM (R > 27 OHM-M)	MM/M	Value	Phase	IM (R < 27 OHM-M) %	Value					
After			0.07140	After		0					
	0 (Minimum)	0 (Nominal)	0.7500 (Maximum)		0 (Minimum)	0 (Nominal)	2.000 (Maximum)				
Phase	SFL (R > 27 OHM-M)	MM/M	Value	Phase	SFL (R < 27 OHM-M) %	Value					
After			0	After		0.001624					
	0 (Minimum)	0 (Nominal)	0.7500 (Maximum)		0 (Minimum)	0 (Nominal)	2.000 (Maximum)				

After: 20-Jul-2009 17:34

General Purpose Inclinometer / Equipment Identification

Primary Equipment:			
GPIT Cartridge - A	GPIC - A	719	
Auxiliary Equipment:			
GPIT Housing	GPIH - A	2864	

Accelerator-Porosity Tool / Equipment Identification

Primary Equipment:			
Accelerator-Porosity Sonde	APS - C	22	
APS Minitron	MNTR - F	5589	
Auxiliary Equipment:			
Accelerator-Porosity Housing	APH - AC	22	
APS Calibration Water Tank	SFT - 178	2	
APS Aluminum Calibrator Sleeve	SFT - 281	2	

Accelerator-Porosity Tool Wellsite Calibration									
Detector Background									
Phase	Near Det Bkg Cntrate CPS	Value	Phase	Far Det Bkg Cntrate CPS	Value	Phase	Array-1 Det Bkg Cntrate CPS	Value	
Master		32.09	Master		31.69	Master		28.61	
Before		31.37	Before		32.54	Before		27.80	
After		31.94	After		32.77	After		29.25	
	1.000 (Minimum)	30.00 (Nominal)	50.00 (Maximum)	1.000 (Minimum)	30.00 (Nominal)	50.00 (Maximum)	1.000 (Minimum)	30.00 (Nominal)	50.00 (Maximum)
Phase	Array-2 Det Bkg Cntrate CPS	Value	Phase	Array Therm Det Bkg Cntrate CPS	Value				
Master		30.40	Master		32.33				

Before		30.03	Before		32.93
After		31.65	After		31.09
1.000 (Minimum) 30.00 (Nominal) 50.00 (Maximum)			1.000 (Minimum) 30.00 (Nominal) 50.00 (Maximum)		

Master: 18-Jun-2009 23:03 Before: 20-Jul-2009 13:08 After: 20-Jul-2009 17:38

Accelerator-Porosity Tool Wellsite Calibration								
Calibration Ratios								
Phase	Near/Far Calibration Ratio	Value	Phase	Near/Array Calibration Ratio	Value	Phase	Near/Array Cal Ratio Up/Down	Value
Master		0.8852	Master		1.059	Master		1.008
0.8000 (Minimum) 0.9250 (Nominal) 1.050 (Maximum)			0.9000 (Minimum) 1.030 (Nominal) 1.170 (Maximum)			0.9700 (Minimum) 1.000 (Nominal) 1.030 (Maximum)		

Master: 18-Jun-2009 23:03

Accelerator-Porosity Tool Wellsite Calibration								
Tank Check								
Phase	Array-1 Standoff Porosity PU	Value	Phase	Array-2 Standoff Porosity PU	Value	Phase	Average Slowing Down Time US	Value
Master		11.81	Master		11.56	Master		5.860
9.900 (Minimum) 11.75 (Nominal) 13.60 (Maximum)			9.900 (Minimum) 11.75 (Nominal) 13.60 (Maximum)			5.500 (Minimum) 6.000 (Nominal) 6.250 (Maximum)		
Phase	Array-1 SDT Ratio Up/Down	Value	Phase	Array-2 SDT Ratio Up/Down	Value	Phase	Sigma Formation CU	Value
Master		0.9891	Master		1.006	Master		27.25
0.9500 (Minimum) 1.000 (Nominal) 1.050 (Maximum)			0.9500 (Minimum) 1.000 (Nominal) 1.050 (Maximum)			20.00 (Minimum) 27.50 (Nominal) 35.00 (Maximum)		

Master: 18-Jun-2009 23:03

Hostile Litho-Density Sonde / Equipment Identification			
Primary Equipment:			
Hostile Litho Density Sonde	HLDS - D	57	
Hostile Litho Density High Voltage	HLDV - D	51	
Gamma Source Radioactive	GSR - Z	2397	
Auxiliary Equipment:			
Hostile Litho Density Pad	HLDP - C	61	
Hostile Litho Density High Voltage Housi	HEH - H	53	

Hostile Litho-Density Sonde Wellsite Calibration								
Background Measurement								
Phase	SS Cs Resolution Bkg %	Value	Phase	LS Cs Resolution Bkg %	Value	Phase	LSW1 Background CPS	Value
Master		7.767	Master		7.963	Master		92.51
Before		7.806	Before		8.085	Before		92.08
After		7.745	After		8.100	After		91.98
7.000 (Minimum) 9.000 (Nominal) 11.00 (Maximum)			7.000 (Minimum) 9.000 (Nominal) 11.00 (Maximum)			55.00 (Minimum) 100.0 (Nominal) 150.0 (Maximum)		
Phase	LSW2 Background CPS	Value	Phase	LSW3 Background CPS	Value	Phase	LSW4 Background CPS	Value
Master		83.43	Master		192.3	Master		236.2
Before		83.95	Before		191.3	Before		234.1
After		83.01	After		190.1	After		234.4
50.00 (Minimum) 100.0 (Nominal) 140.0 (Maximum)			110.0 (Minimum) 200.0 (Nominal) 290.0 (Maximum)			140.0 (Minimum) 250.0 (Nominal) 360.0 (Maximum)		
Phase	LSW5 Background CPS	Value	Phase	SSW1 Background CPS	Value	Phase	SSW2 Background CPS	Value
Master		548.3	Master		90.55	Master		155.0
Before		547.2	Before		89.75	Before		153.6
After		549.3	After		90.65	After		155.5
330.0 (Minimum) 600.0 (Nominal) 830.0 (Maximum)			55.00 (Minimum) 100.0 (Nominal) 150.0 (Maximum)			100.0 (Minimum) 200.0 (Nominal) 260.0 (Maximum)		
Phase	SSW3 Background CPS	Value	Phase	SSW4 Background CPS	Value	Phase	SSW5 Background CPS	Value
Master		433.9	Master		232.2	Master		167.8
Before		431.7	Before		233.1	Before		165.5

After	280.0 (Minimum)	500.0 (Nominal)	700.0 (Maximum)	435.0	After	150.0 (Minimum)	270.0 (Nominal)	380.0 (Maximum)	232.3	After	110.0 (Minimum)	200.0 (Nominal)	270.0 (Maximum)	166.9
Master: 30-Jun-2009 23:48					Before: 20-Jul-2009 13:08					After: 20-Jul-2009 18:59				

Litho-Density Spectroscopy Cartridge - B / Equipment Identification

Primary Equipment: LDSC Cartridge	LDSC - B	326
Auxiliary Equipment: LDSC Housing	LDSH - A	319

Hostile Natural Gamma Ray Cartridge - B / Equipment Identification

Primary Equipment: HNGC Cartridge	HNGC - B	300
Auxiliary Equipment: HNGC Housing	HNGH - A	115

Hostile Natural Gamma Ray Sonde / Equipment Identification

Primary Equipment: HNGS Sonde	HNGS - BA	194
Auxiliary Equipment: HNGS Sonde Housing	HNSH - BA	205
Gamma Source Radioactive	GSR - U	616008

Hostile Natural Gamma Ray Sonde Wellsite Calibration

Detector 1 Check

Phase	Na 511 Peak Loc	Value	Phase	Na 511 Peak Res %	Value	Phase	High Voltage V	Value	
Master		39.80	Master		15.76	Master		1181	
Before		39.59	Before		14.50	Before		1139	
After		39.67	After		14.70	After		1143	
	37.50 (Minimum)	40.00 (Nominal)	43.50 (Maximum)	12.00 (Minimum)	15.50 (Nominal)	19.00 (Maximum)	900.0 (Minimum)	1150 (Nominal)	1600 (Maximum)
Phase	Na 1785 Peak Loc	Value	Phase	Na 1785 Peak Res %	Value	Phase	Temperature DEGC	Value	
Master		142.6	Master		8.553	Master		32.22	
Before		142.5	Before		8.452	Before		13.11	
After		142.3	After		7.811	After		13.11	
	135.0 (Minimum)	142.6 (Nominal)	150.3 (Maximum)	7.000 (Minimum)	8.500 (Nominal)	11.00 (Maximum)	-28.89 (Minimum)	15.50 (Nominal)	60.00 (Maximum)
Phase	Na Count Rate CPS	Value							
Master		37.08							
Before		36.43							
After		36.67							
	10.00 (Minimum)	45.00 (Nominal)	100.0 (Maximum)						

Master: 19-Jun-2009 22:52					Before: 20-Jul-2009 13:09					After: 20-Jul-2009 19:00				
---------------------------	--	--	--	--	---------------------------	--	--	--	--	--------------------------	--	--	--	--

Hostile Natural Gamma Ray Sonde Wellsite Calibration

Detector 2 Check

Phase	Na 511 Peak Loc	Value	Phase	Na 511 Peak Res %	Value	Phase	High Voltage V	Value	
Master		39.62	Master		16.69	Master		1114	
Before		39.67	Before		15.09	Before		1076	
After		39.65	After		15.03	After		1078	
	37.50 (Minimum)	40.00 (Nominal)	43.50 (Maximum)	12.00 (Minimum)	15.50 (Nominal)	19.00 (Maximum)	900.0 (Minimum)	1150 (Nominal)	1600 (Maximum)

(Minimum)	(Nominal)	(Maximum)	(Minimum)	(Nominal)	(Maximum)	(Minimum)	(Nominal)	(Maximum)			
Phase	Na 1785 Peak Loc		Value	Phase	Na 1785 Peak Res %		Value	Phase	Temperature DEGC		Value
Master		142.4	Master		8.478	Master		32.71			
Before		141.6	Before		8.319	Before		13.07			
After		141.7	After		8.013	After		14.40			
135.0 (Minimum)	142.6 (Nominal)	150.3 (Maximum)	7.000 (Minimum)	8.500 (Nominal)	11.00 (Maximum)	-28.89 (Minimum)	15.50 (Nominal)	60.00 (Maximum)			
Phase	Na Count Rate CPS		Value								
Master		38.14									
Before		36.44									
After		36.87									
10.00 (Minimum)	45.00 (Nominal)	100.0 (Maximum)									
Master: 19-Jun-2009 22:52			Before: 20-Jul-2009 13:09			After: 20-Jul-2009 19:00					

Hostile Natural Gamma Ray Sonde Wellsite Calibration		
Ratio Of Detector 1 To Detector 2		
Phase	Coincidence Count Rate Ratio	Value
Master		0.9751
Before		1.001
After		0.9950
0.9500 (Minimum)	1.000 (Nominal)	1.050 (Maximum)
Master: 19-Jun-2009 22:52		
Before: 20-Jul-2009 13:09		
After: 20-Jul-2009 19:00		

DTS Telemetry Tool / Equipment Identification

Primary Equipment:

DTC-H Auxiliary Cartridge
DTC-H Telemetry Cartridge

DTCH - A
DTCH - A 8798

Auxiliary Equipment:

DTCH Telemetry Cartridge Housing

ECH - KC 2304

Company: Lamont Doherty

Schlumberger

Well: Expedition 323 Site U1339D

Field: Bering Sea

Rig: JOIDES Resolution

Country: USA

APS Neutron Porosity
HLDS Litho-Density
Natural Gamma Spectroscopy