

DISCLAIMER

THE USE OF AND RELIANCE UPON THIS RECORDED-DATA BY THE HEREIN NAMED COMPANY (AND ANY OF ITS AFFILIATES, PARTNERS, REPRESENTATIVES, AGENTS, CONSULTANTS AND EMPLOYEES) IS SUBJECT TO THE TERMS AND CONDITIONS AGREED UPON BETWEEN SCHLUMBERGER AND THE COMPANY, INCLUDING: (a) RESTRICTIONS ON USE OF THE RECORDED-DATA; (b) DISCLAIMERS AND WAIVERS OF WARRANTIES AND REPRESENTATIONS REGARDING COMPANY'S USE OF AND RELIANCE UPON THE RECORDED-DATA; AND (c) CUSTOMER'S FULL AND SOLE RESPONSIBILITY FOR ANY INFERENCE DRAWN OR DECISION MADE IN CONNECTION WITH THE USE OF THIS RECORDED-DATA.



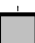
OTHER SERVICES1 OS1: WSTA OS2: OS3: OS4: OS5:	OTHER SERVICES2 OS1: OS2: OS3: OS4: OS5:
--	---

REMARKS: RUN NUMBER 1 Hole drilled with APC/XCB. All depths in Meters Below Rig Floor (MBRF). Hole flushed with Sepiolite/Barite mud. Sae Floor Driller- 1314.6 MBRF Sea Floor Logger- 1314 MBRF. Total Depth Driller- 1614.6 MBRF Total Depth Logger- 1609 MBRF. Casing bottom Driller- 1387 MBRF. Casing Bottom Logger- 1384 MBRF Caliper was broken when heave comp was turned off before entering pipe. Heave was 3-4 meters.	REMARKS: RUN NUMBER 2
--	-----------------------

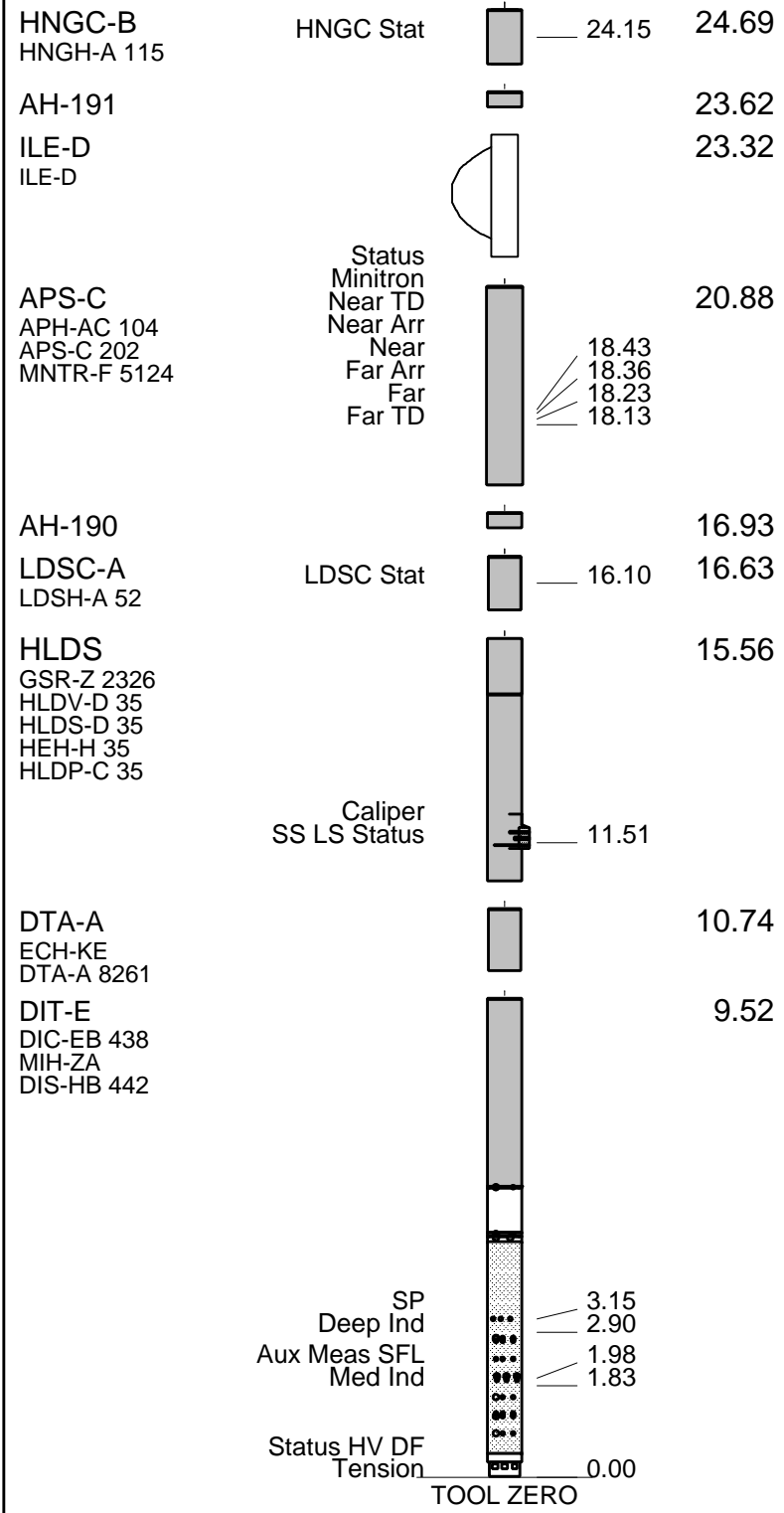
RUN 1			RUN 2		
SERVICE ORDER #:			SERVICE ORDER #:		
PROGRAM VERSION:		12C0-301	PROGRAM VERSION:		
FLUID LEVEL:			FLUID LEVEL:		
LOGGED INTERVAL	START	STOP	LOGGED INTERVAL	START	STOP

EQUIPMENT DESCRIPTION

RUN 1		RUN 2	
SURFACE EQUIPMENT			
SFT-281 6250			
SFT-178 6250			
GSR-U 135			
WITM (DTS)-A			

DOWNHOLE EQUIPMENT			
LEH-QT			28.99
LEH-QT 1726			
DTC-H	CTEM		27.82
ECH-KC 9841	TelStatus		28.10
	ToolStatu		27.19
HNGS-BA	Upper_1		26.49
HNGS-BA 194	Lower_2		26.27

HNSH-BA 205



MAXIMUM STRING DIAMETER 3.88 IN
 MEASUREMENTS RELATIVE TO TOOL ZERO
 ALL LENGTHS IN METERS

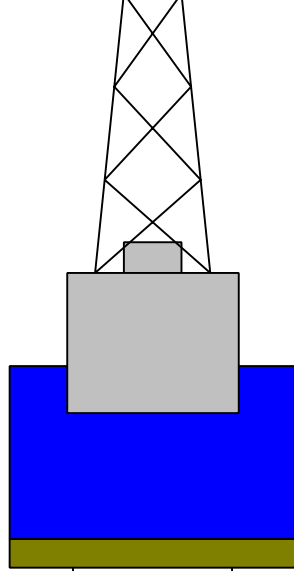
Production String	(in)	(m)	Well Schematic	(m)	(in)	Casing String
	OD	ID		MD	OD	

Kelly Bushing Elevation
 Derrick Floor Elevation

 Mean Sea Level

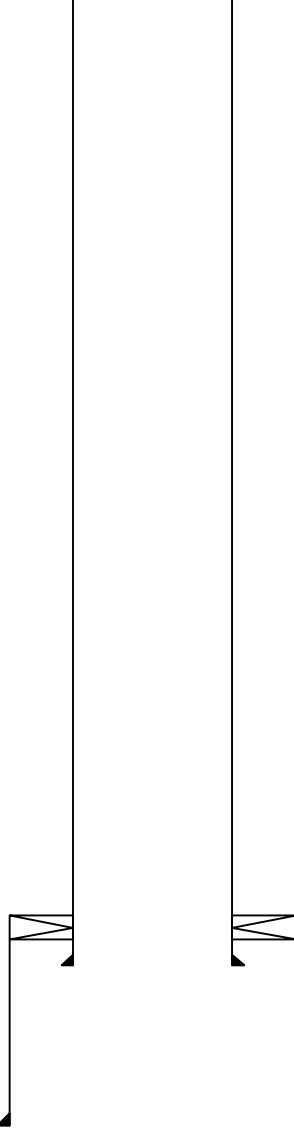
11.3
 11.0

 0.0



0.0 5.500

Casing String



1314.6 9.875
1387.6 ~~5.500~~ 9.875

 1614.6 9.875

Casing String
~~Casing String~~

 Casing Shoe

Schlumberger

Main Up Log

MAXIS Field Log

Output DLIS Files

DEFAULT	PI_LDL_APS_NGS_013LUP	FN:12	PRODUCER	08-Oct-2005 02:24	1609.3 M	1270.3 M
---------	-----------------------	-------	----------	-------------------	----------	----------

OP System Version: 12C0-301 MCM

DIT-E	12C0-301	DTA-A	12C0-301
HLDS	SPC-2602-NUCL	LDSC-A	SPC-2602-NUCL
APS-C	SPC-2602-NUCL	HNGC-B	SPC-2602-NUCL
HNGS-BA	SPC-2602-NUCL	DTC-H	12C0-301

PIP SUMMARY

 Time Mark Every 60 S

HNGS Spectroscopy Gamma Ray
(HSGR)

0 (GAPI) 150

Area1
From HCGR to HSGR

HNGS Borehole Potassium (HBHK)
-0.05 (---) 0.05

HNGS Computed Gamma Ray (HCGR)
(GAPI) 0 150

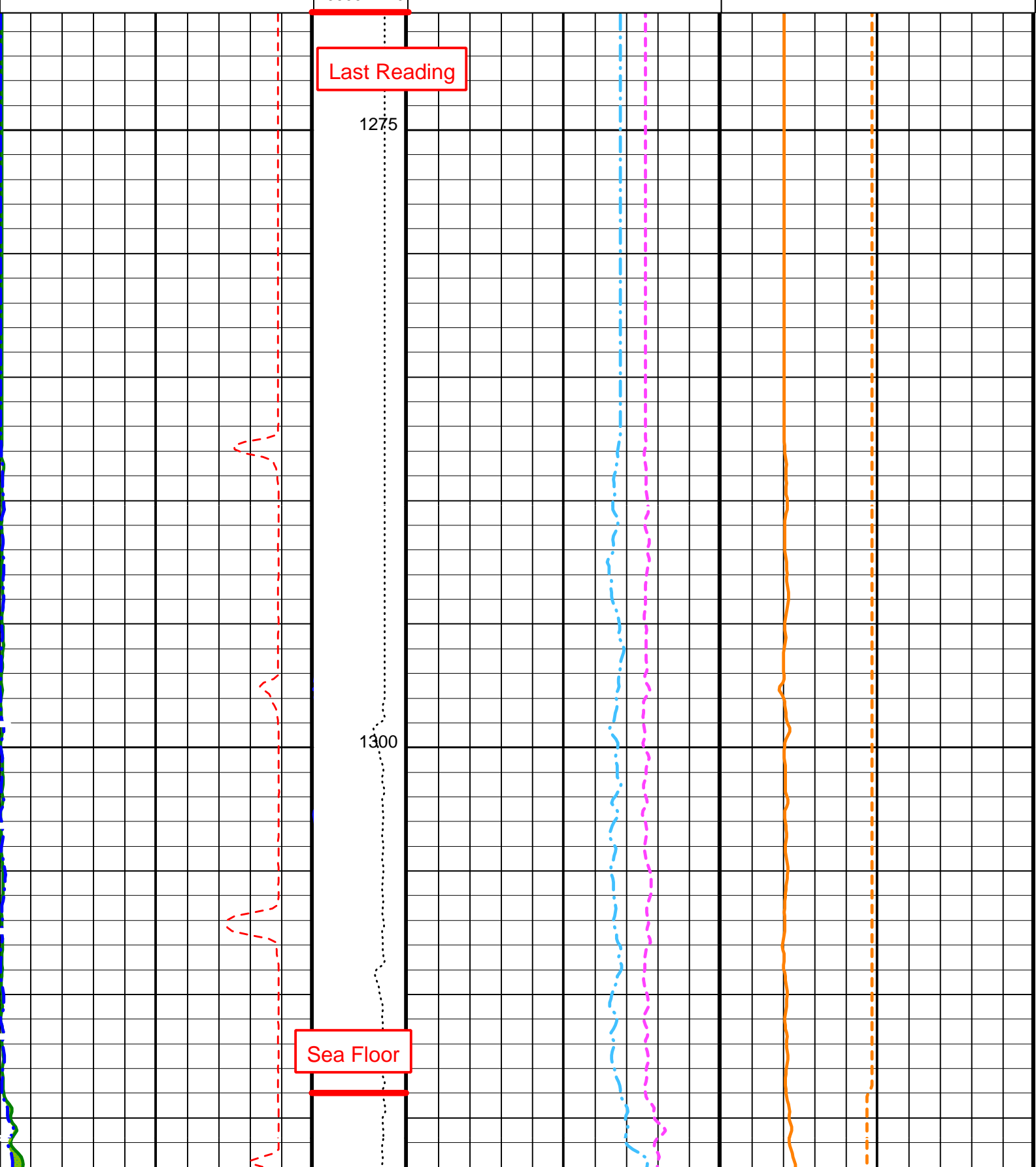
HNGS Uranium (HURA)
(PPM) -5 10

HLDS Caliper (LCAL)
(IN) 0 20

Tension
(TENS)
(LBF) 10000 0

HNGS Thorium (HTHO)
(PPM) 5 25

HNGS Potassium (HFK)
(---) -0.01 0.04

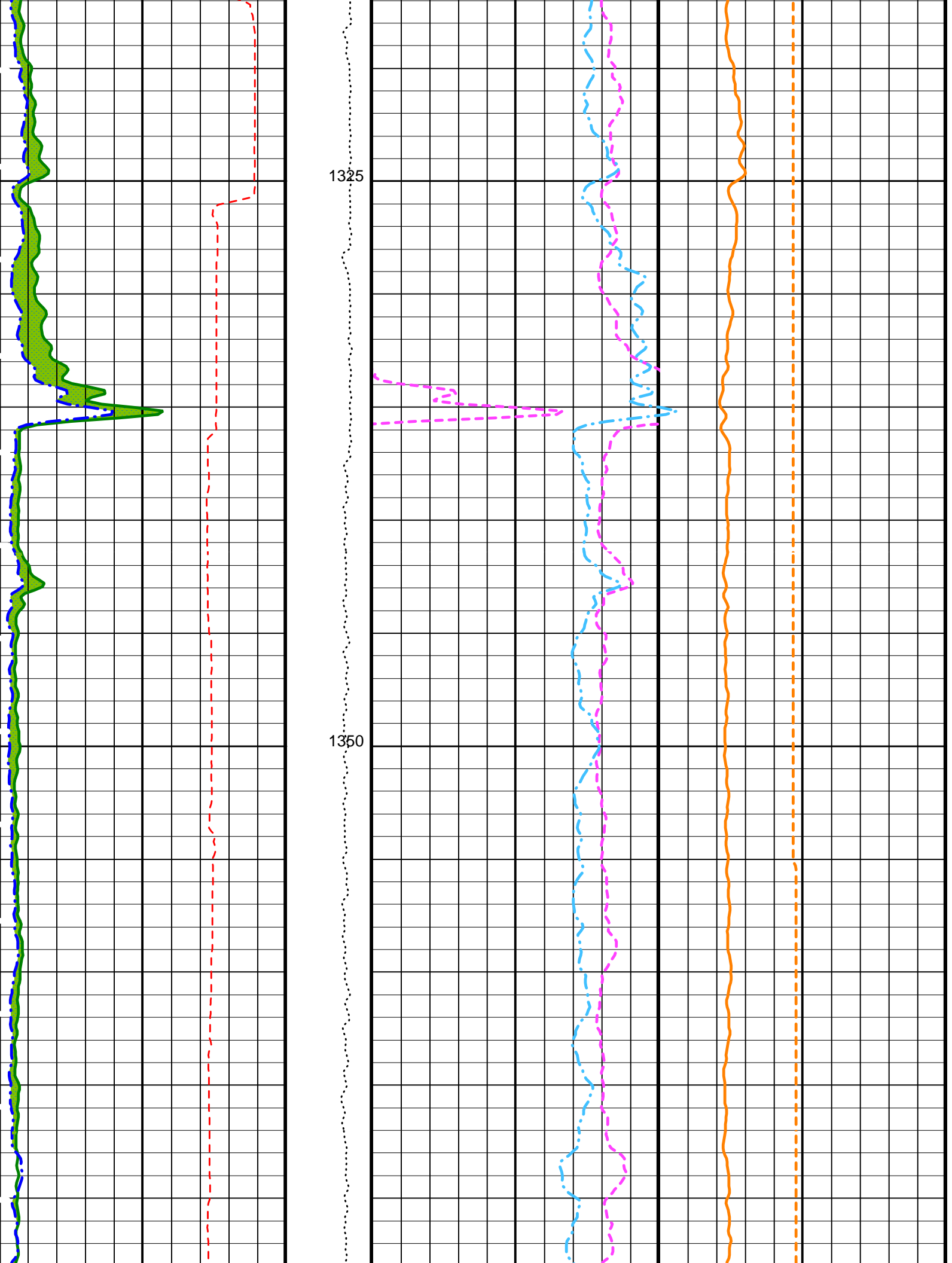


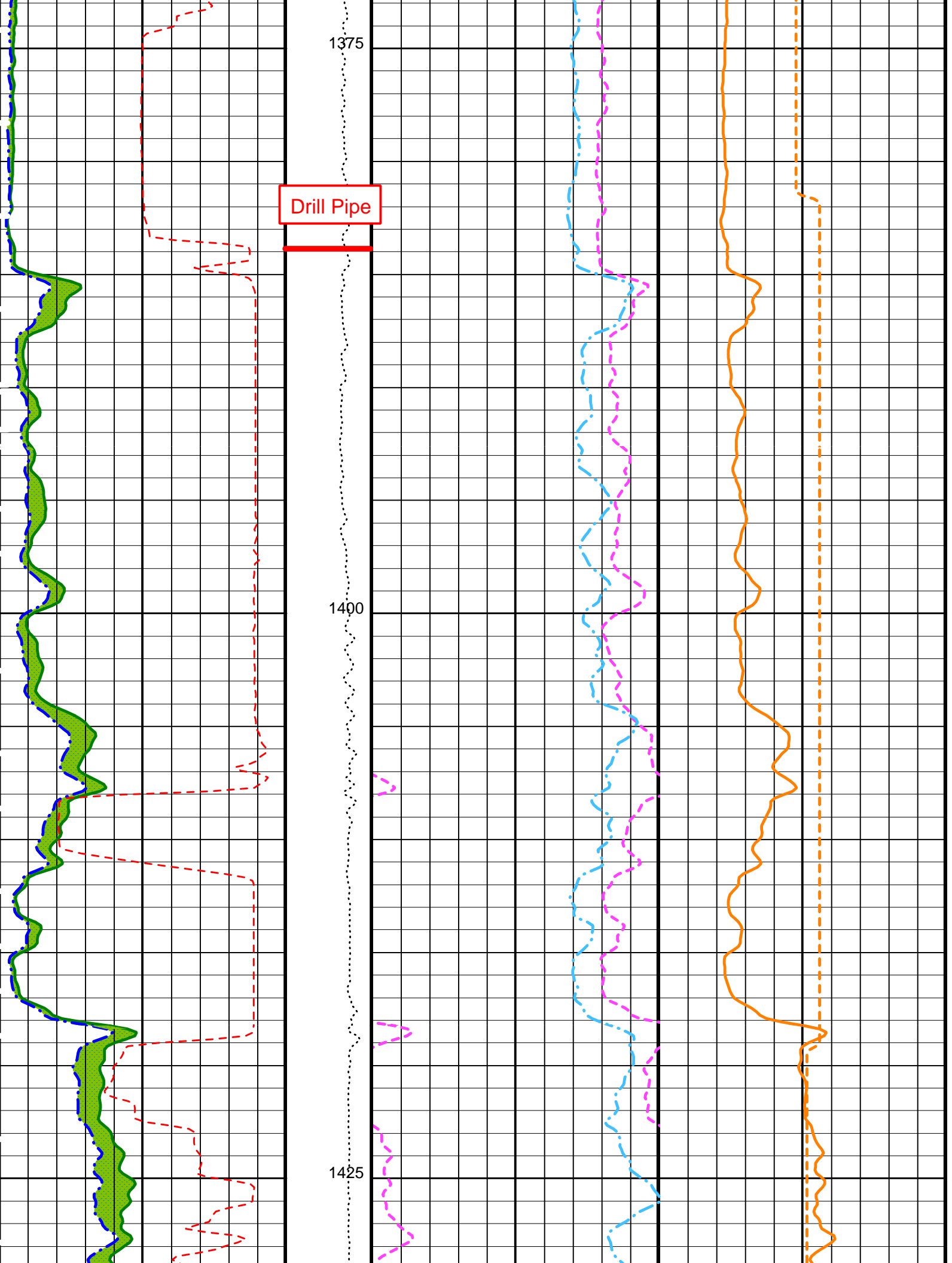
Last Reading

1275

1300

Sea Floor



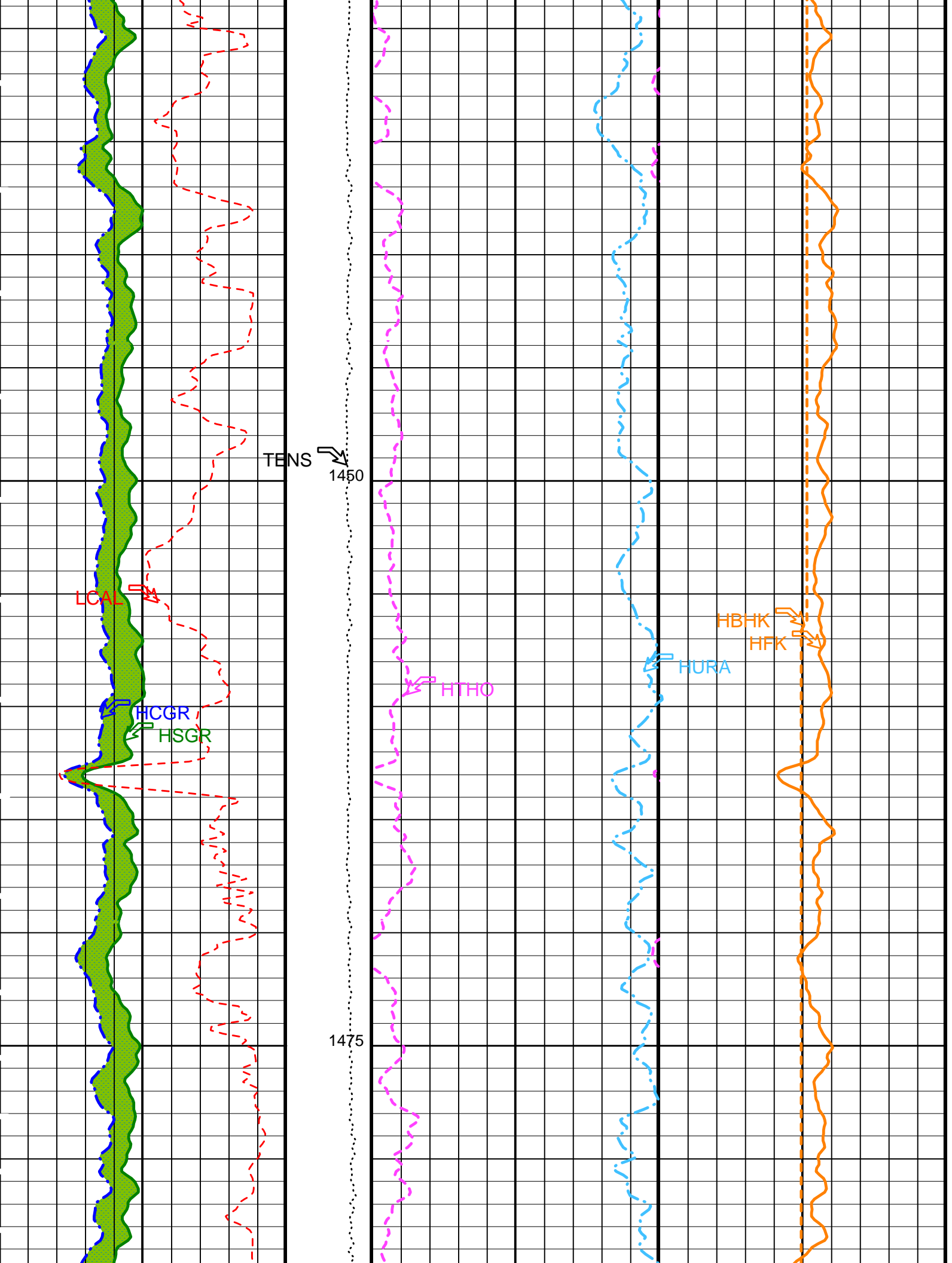


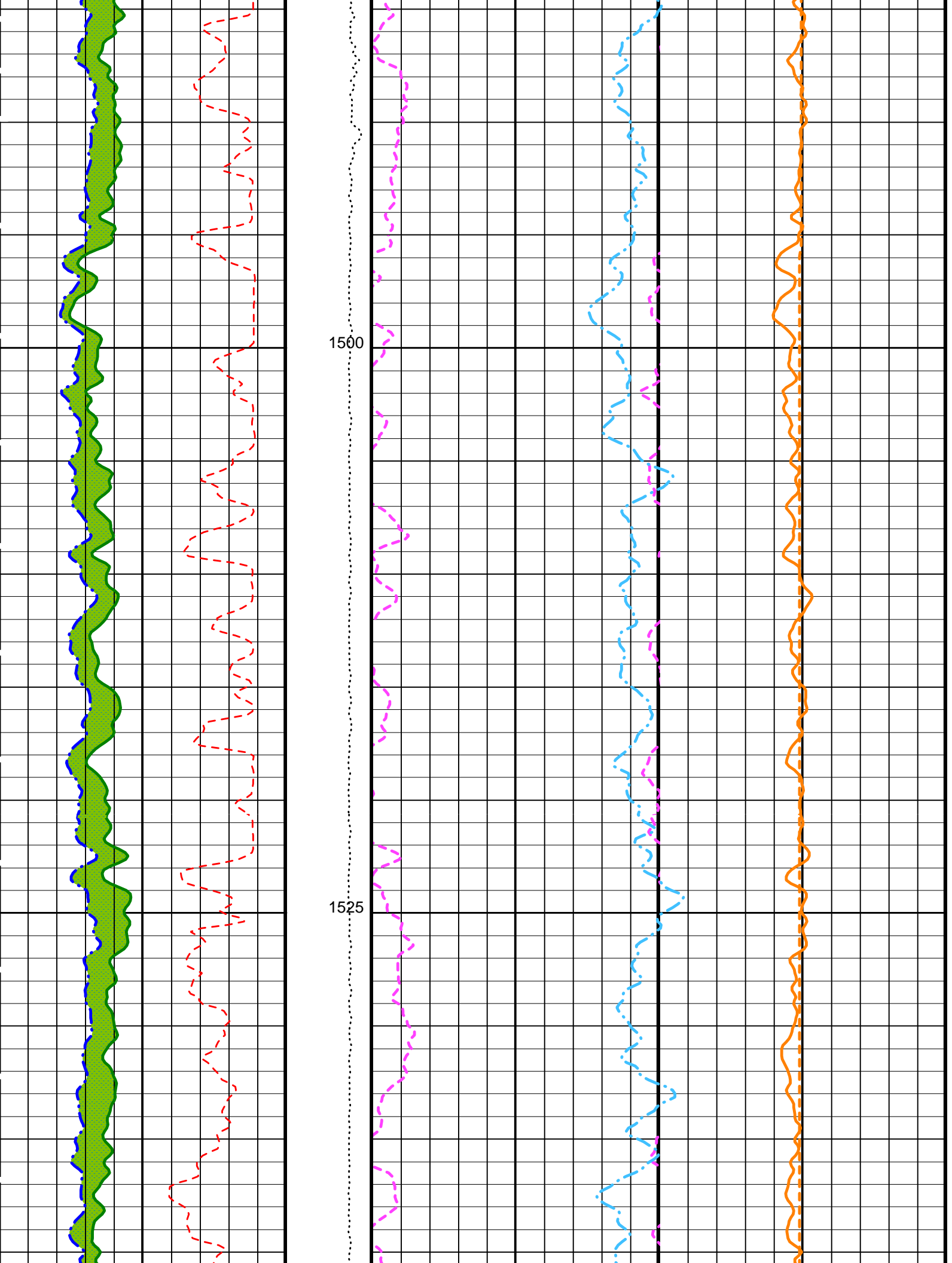
1375

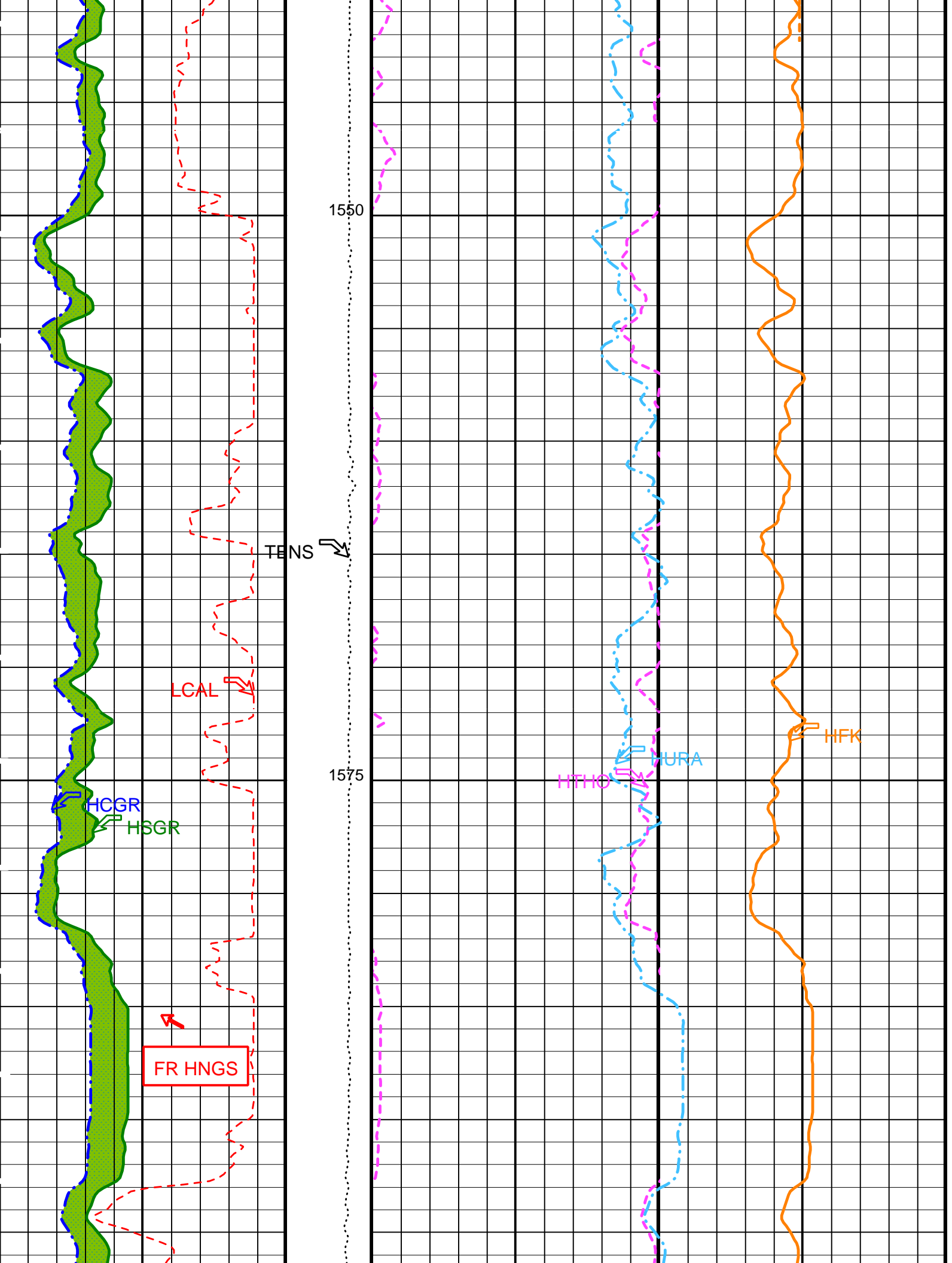
Drill Pipe

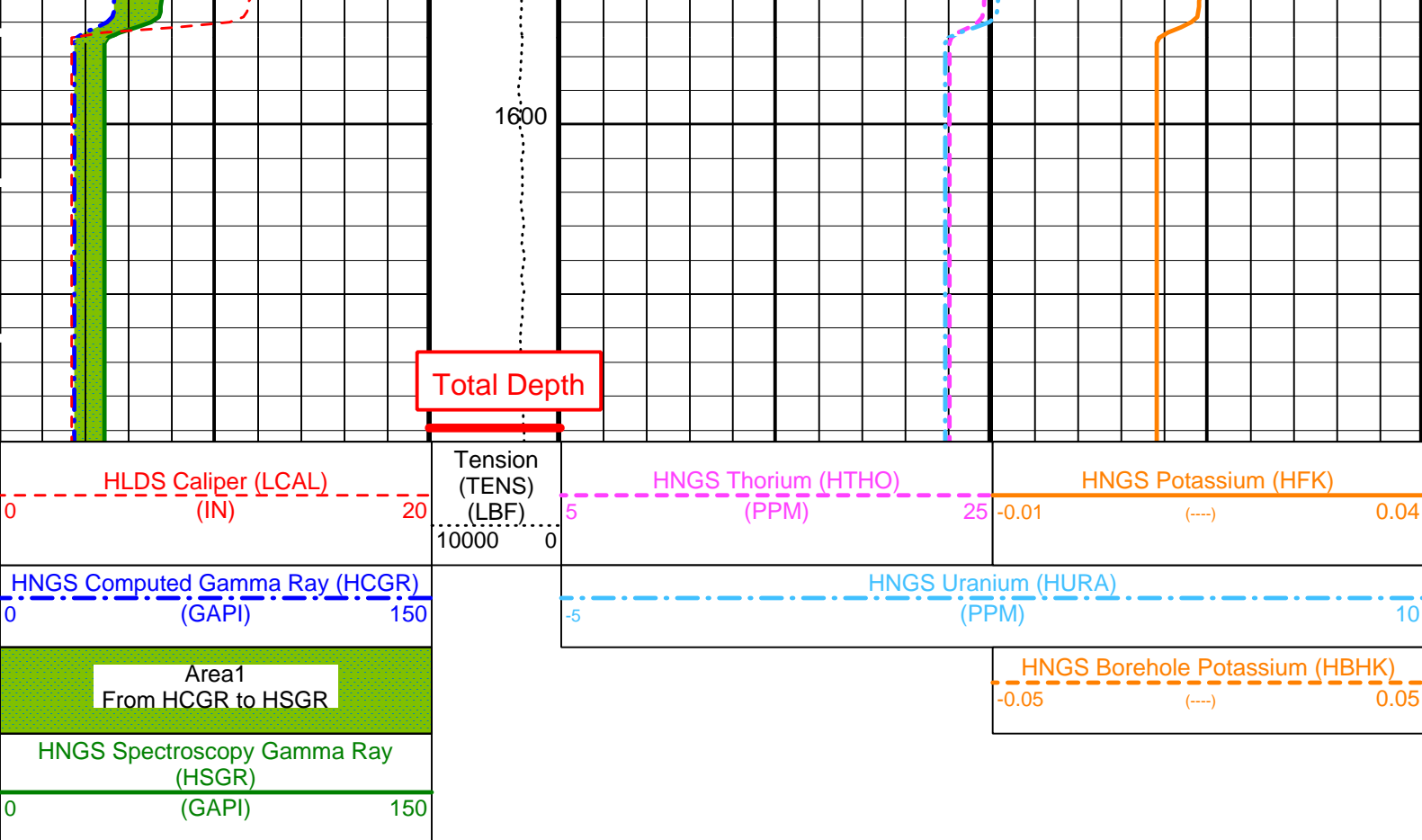
1400

1425









PIP SUMMARY

Time Mark Every 60 S

Parameters

DLIS Name	Description	Value
DIT-E: Dual Induction - E		
BHS	Borehole Status	OPEN
GCSE	Generalized Caliper Selection	LCAL
APS-C: Accelerator-Porosity Tool		
BHS	Borehole Status	OPEN
GCSE	Generalized Caliper Selection	LCAL
HNGS-BA: Hostile Natural Gamma Ray Sonde		
BAR1	HNGS Detector 1 Barite Constant	1
BAR2	HNGS Detector 2 Barite Constant	1
BHK	HNGS Borehole Potassium Correction Concentration	0
BHS	Borehole Status	OPEN
CSD1	Inner Casing Outer Diameter	0 IN
CSD2	Outer Casing Outer Diameter	0 IN
CSW1	Inner Casing Weight	0 LB/F
CSW2	Outer Casing Weight	0 LB/F
DBCC	HNGS Barite Constant Correction Flag	NONE
GCSE	Generalized Caliper Selection	LCAL
H1P	HNGS Detector 1 Allow/Disallow In Processing	ALLOW
H2P	HNGS Detector 2 Allow/Disallow In Processing	ALLOW
HABK	HNGS Borehole Potassium Running Average	-0.00188243
HALF	HNGS Alpha Filter Length	60 IN
HCRB	HNGS Apply Borehole Potassium Correction	NONE
HMWM	Mud Weighting Material	BARI
HNPE	HNGS Processing Enable	YES
S1BI	HNGS Detector 1 Calibration Bismuth Count Rate	1.3 CPS
S2BI	HNGS Detector 2 Calibration Bismuth Count Rate	1.3 CPS
SGRC	HNGS Standard Gamma-Ray Correction Flag	YES
TPOS	Tool Position	ECCE
VBA1	HNGS Detector 1 Variable Barite Factor Running Average	0.971055
VBA2	HNGS Detector 2 Variable Barite Factor Running Average	0.974887
HOLEV: Integrated Hole/Cement Volume		
BHS	Borehole Status	OPEN
GCSE	Generalized Caliper Selection	LCAL
System and Miscellaneous		
BS	Bit Size	9.875 IN
DFD	Drilling Fluid Density	1.26 G/C3

OP System Version: 12C0-301

MCM

DIT-E	12C0-301	DTA-A	12C0-301
HLDS	SPC-2602-NUCL	LDSC-A	SPC-2602-NUCL
APS-C	SPC-2602-NUCL	HNGC-B	SPC-2602-NUCL
HNGS-BA	SPC-2602-NUCL	DTC-H	12C0-301

Output DLIS Files

DEFAULT PI_LDL_APS_NGS_013LUP FN:12 PRODUCER 08-Oct-2005 02:24

Company: Lamont Doherty

Schlumberger

Well: IODP EXP 311 Site U1327D

Field: CAS-01B

Country: Canada

Ocean: Pacific

Natural Gamma Ray