

Company: Lamont Doherty

Well: IODP EXP 304 Site 1309D

Field: Atlantis Massif

Country: Mid Atlantic Ridge **Ocean:** Atlantic Ocean

Formation Micro-Scanner

Country: Mid Atlantic Ridge		Field: Atlantis Massif	
Location: Rig- Joides Resolution		Well: IODP EXP 304 Site 1309D	
Company: Lamont Doherty			
LOCATION			
Rig- Joides Resolution		Elev.: K.B. 11.3 m G.L. -1656 m D.F. 11 m	
Permanent Datum: _____		GROUND LEVEL _____	
Log Measured From: DES _____		Elev.: 0 m _____	
Drilling Measured From: DES _____		11.3 m above Perm. Datum	
API Serial No. _____	Max. Hole Devi. _____	Longitude 42.11665 W	Latitude 30.16847 N

Logging Date	
Run Number	1
Depth Driller	2057.3 m
Schlumberger Depth	2057 m
Bottom Log Interval	2056 m
Top Log Interval	1701 m
Casing Driller Size @ Depth	0.000 in @ 1710 m
Casing Schlumberger	1709 m
Bit Size	9.875 in
Type Fluid In Hole	Fresh Water
Density	1.066 g/cm3
Fluid Loss	PH
Source Of Sample	
RM @ Measured Temperature	0.322 ohm.m @ 23 degC
RMF @ Measured Temperature	@ @
RMC @ Measured Temperature	@ @
Source RMF	RMC
RM @ MRT	0.308 @ 25 @ 25
Maximum Recorded Temperatures	25 degC
Circulation Stopped	1/1/05 1600
Logger On Bottom	1/2/05 See Log
Unit Number	99 Houston
Recorded By	Steve Kittredge
Witnessed By	Florence Einaudi

	Run 1	Run 2	Run
Logging Date			
Run Number			
Depth Driller			
Schlumberger Depth			
Bottom Log Interval			
Top Log Interval			
Casing Driller Size @ Depth			
Casing Schlumberger			
Bit Size			
Type Fluid In Hole			
Density			
Fluid Loss			
Source Of Sample			
RM @ Measured Temperature			
RMF @ Measured Temperature			
RMC @ Measured Temperature			
Source RMF			
RM @ MRT			
Maximum Recorded Temperatures			
Circulation Stopped			
Logger On Bottom			
Unit Number			
Recorded By			
Witnessed By			

DISCLAIMER

THE USE OF AND RELIANCE UPON THIS RECORDED-DATA BY THE HEREIN NAMED COMPANY (AND ANY OF ITS AFFILIATES, PARTNERS, REPRESENTATIVES, AGENTS, CONSULTANTS AND EMPLOYEES) IS SUBJECT TO THE TERMS AND CONDITIONS AGREED UPON BETWEEN SCHLUMBERGER AND THE COMPANY, INCLUDING: (a) RESTRICTIONS ON USE OF THE RECORDED-DATA; (b) DISCLAIMERS AND WAIVERS OF WARRANTIES AND REPRESENTATIONS REGARDING COMPANY'S USE OF AND RELIANCE UPON THE RECORDED-DATA; AND (c) CUSTOMER'S FULL AND SOLE RESPONSIBILITY FOR ANY INFERENCE DRAWN OR DECISION MADE IN CONNECTION WITH THE USE OF THIS RECORDED-DATA.


OTHER SERVICES1 OS1: DLL/HLDS/APS OS2: HNGS/GPIT OS3: OS4: OS5:	OTHER SERVICES2 OS1: OS2: OS3: OS4: OS5:
--	---

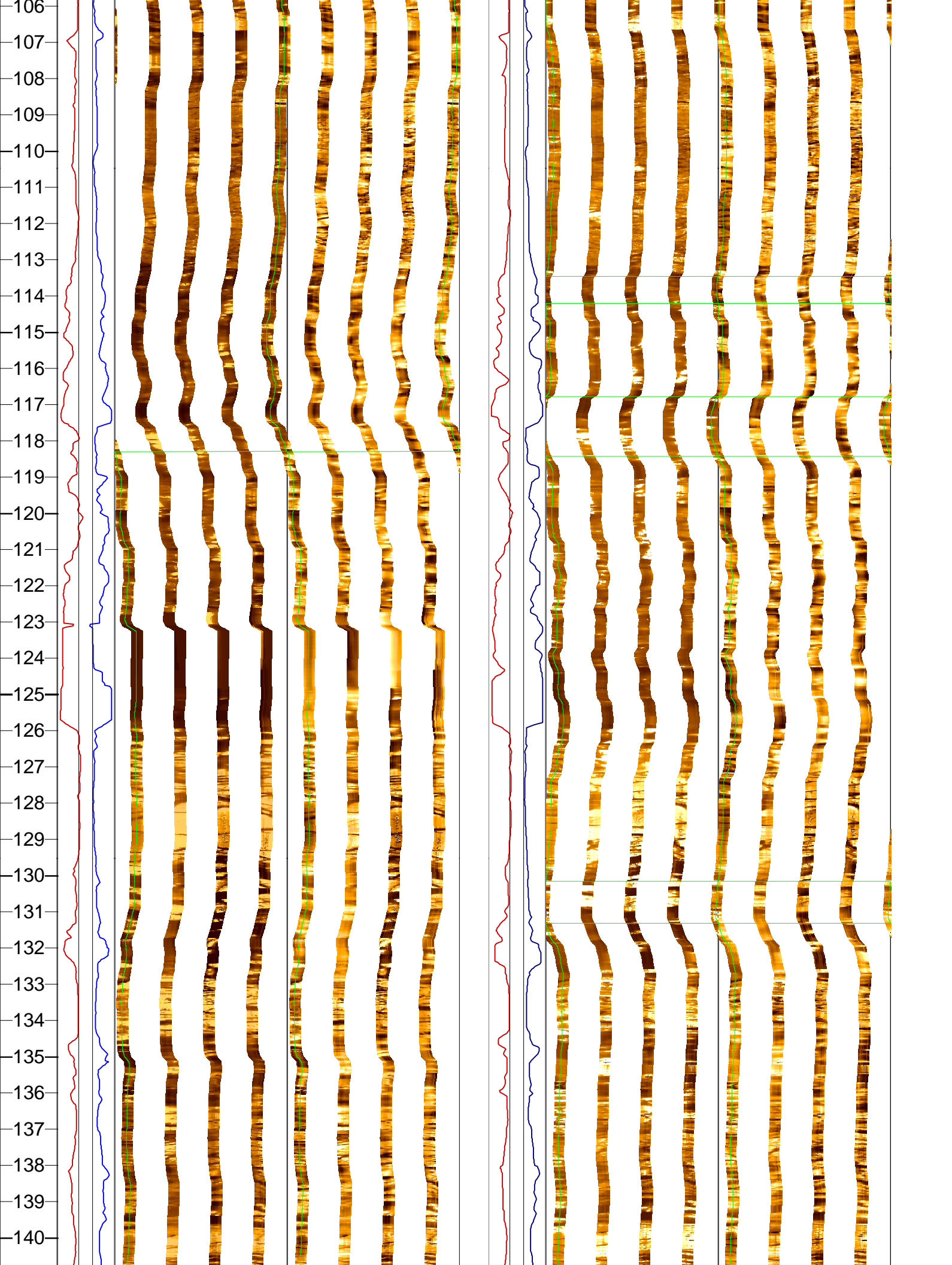
REMARKS: RUN NUMBER 1 Hole Cored with RCB All depths in Meters Below Rig Floor (MBRF). Hole Filled with fresh water. Sea Floor Driller- 1656 MBRF. Sea Floor Logger- 1656 MBRF. Total Depth Driller- 2057.3 MBRF. Total Depth Logger- 2057 MBRF. Casing bottom Driller- 1710 MBRF. Casing Bottom Logger- 1709 MBRF. Had some problems at the top of the hole with ledges. High noise level on sonic due to tool contact with borehole.	REMARKS: RUN NUMBER 2
---	-----------------------

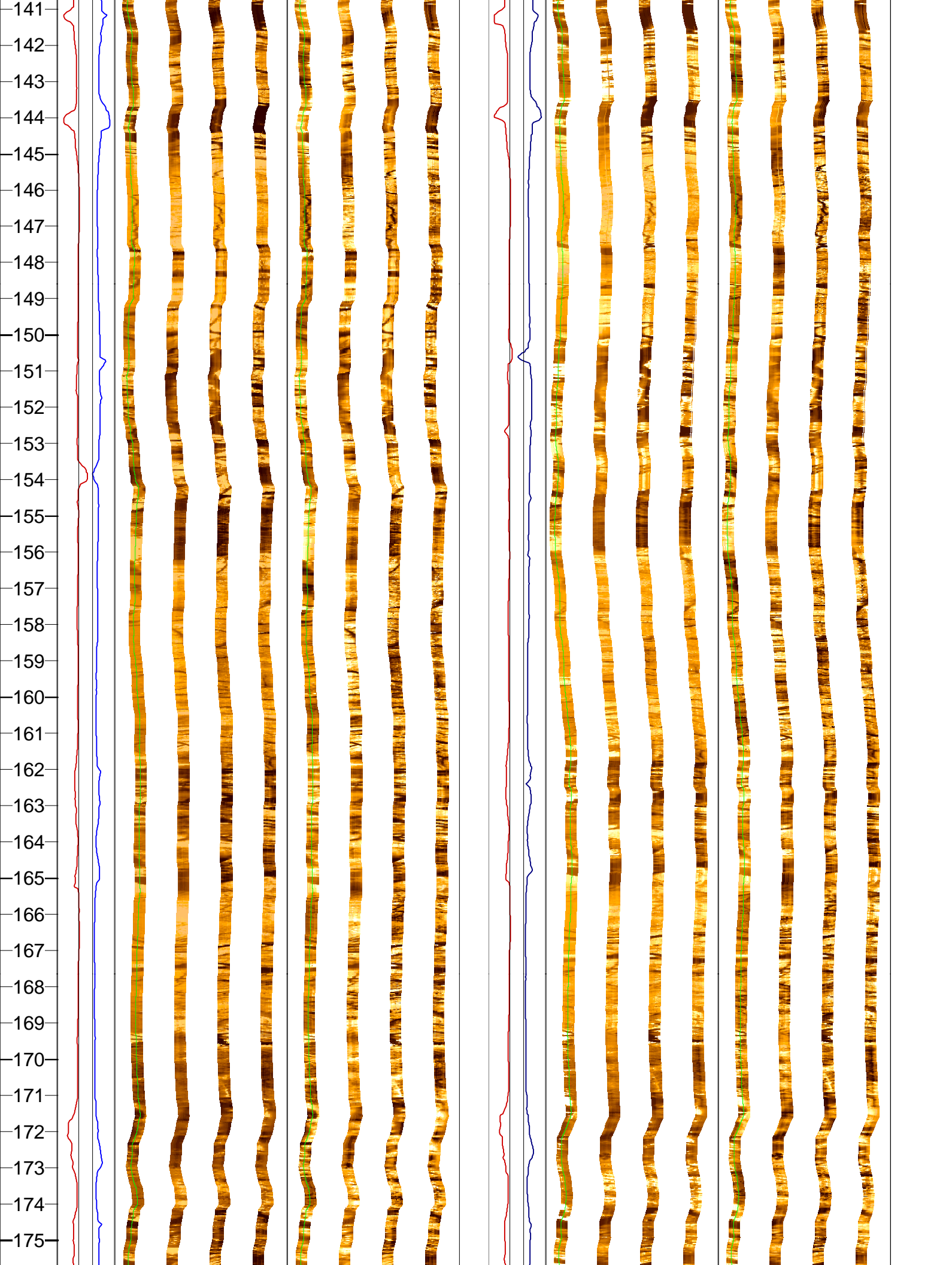
RUN 1			RUN 2		
SERVICE ORDER #:			SERVICE ORDER #:		
PROGRAM VERSION:	12C0-301		PROGRAM VERSION:		
FLUID LEVEL:			FLUID LEVEL:		
LOGGED INTERVAL	START	STOP	LOGGED INTERVAL	START	STOP

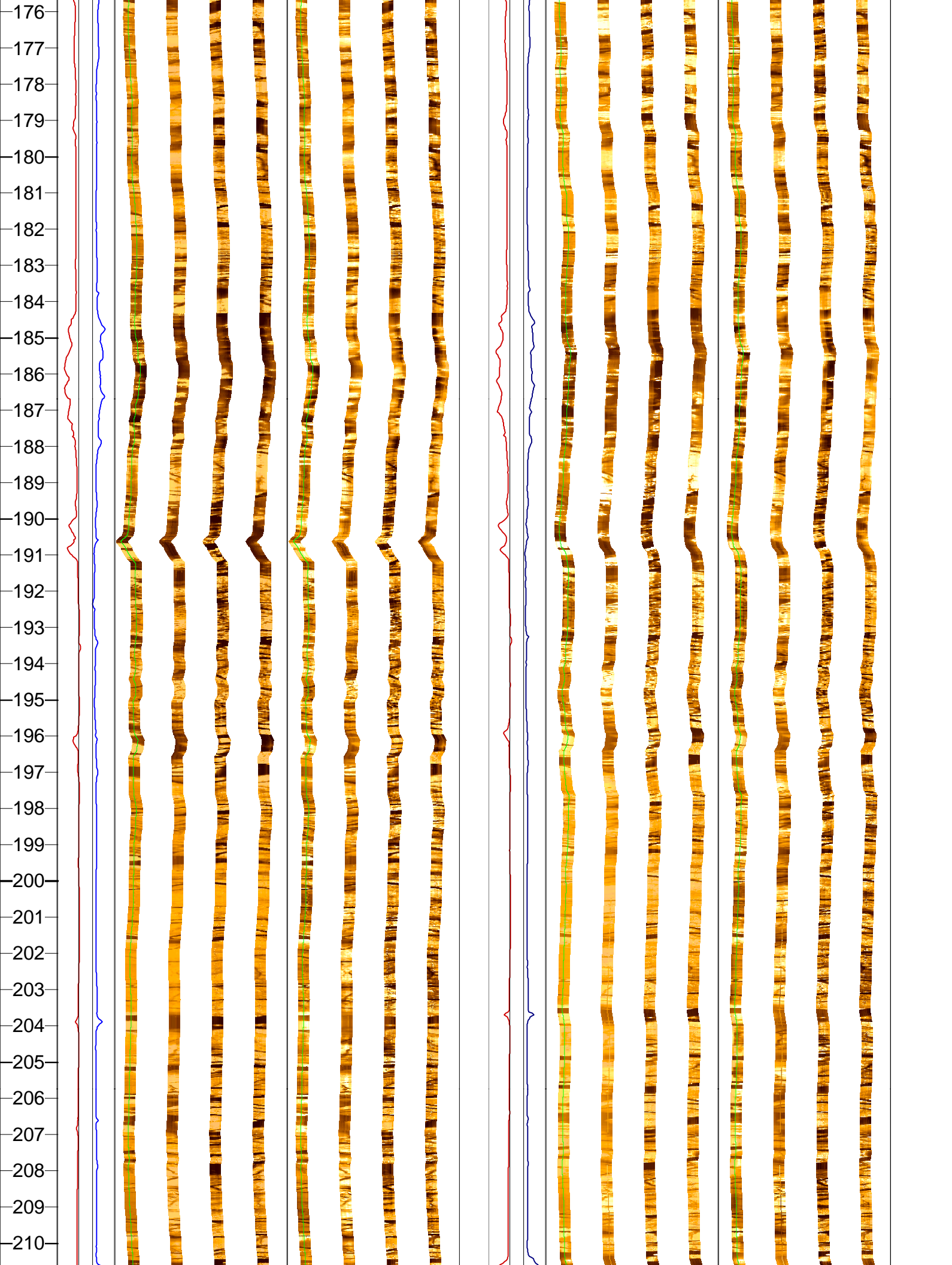
EQUIPMENT DESCRIPTION

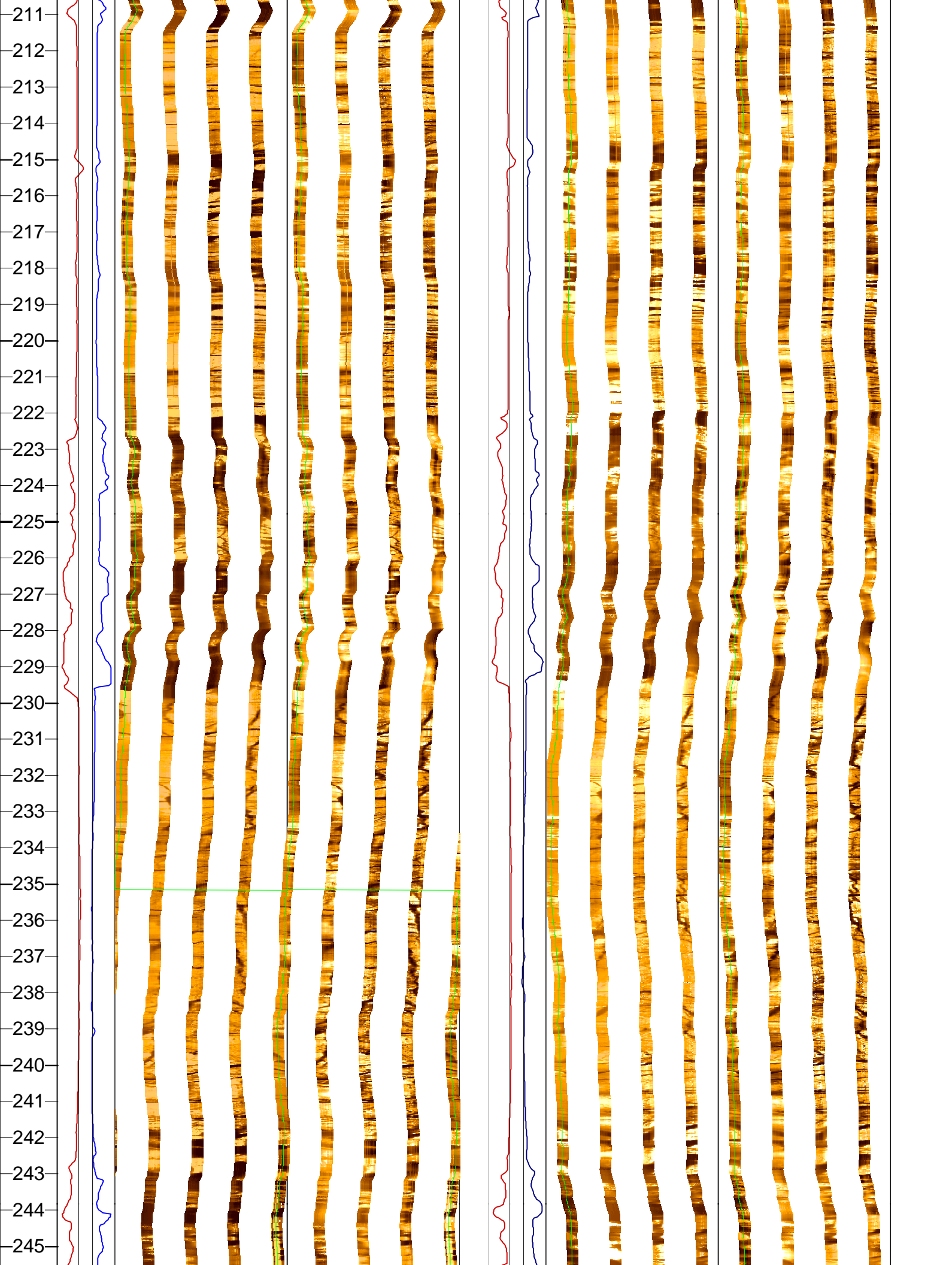
RUN 1		RUN 2	
SURFACE EQUIPMENT			
GSR-U/Y WITM (DTS)-A			

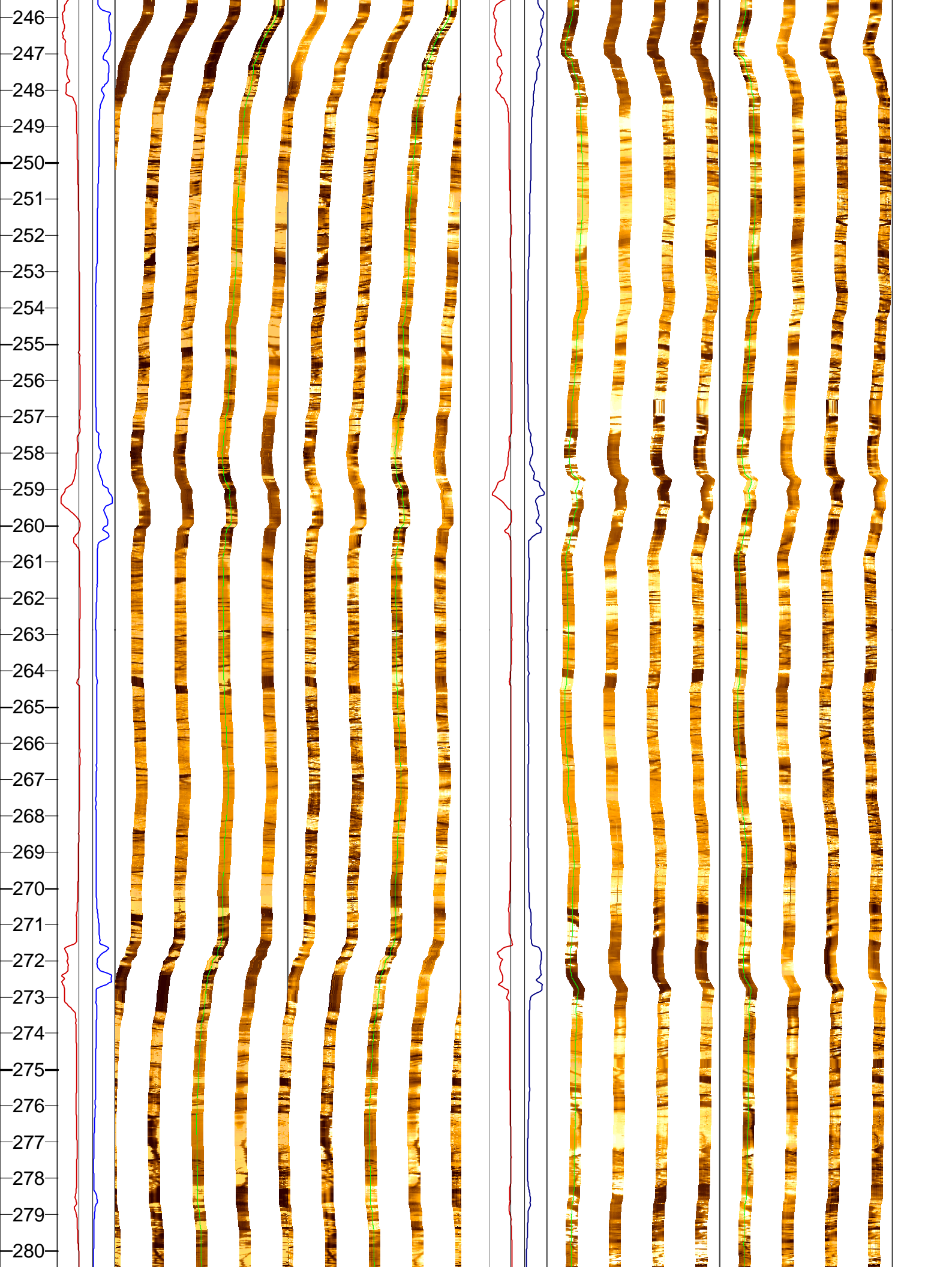
DOWNHOLE EQUIPMENT			
LEH-QT		32.33	
LEH-QT			
DTC-H	CTEM	31.16	
ECH-KC	TelStatus	31.44	
	ToolStatu	30.53	
SGT-N	Gamma Ray	30.25	30.53
SGH-K 2448			

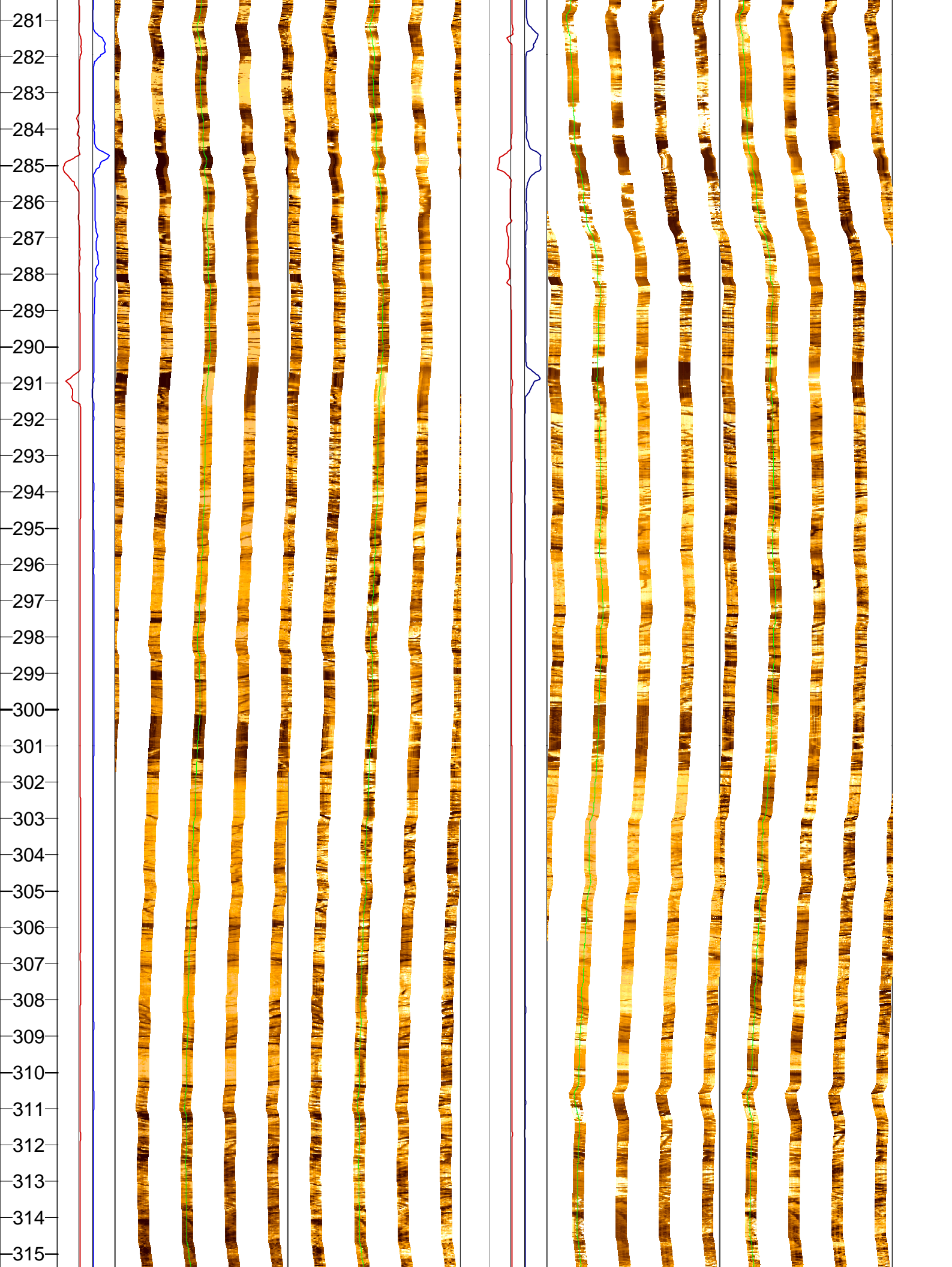




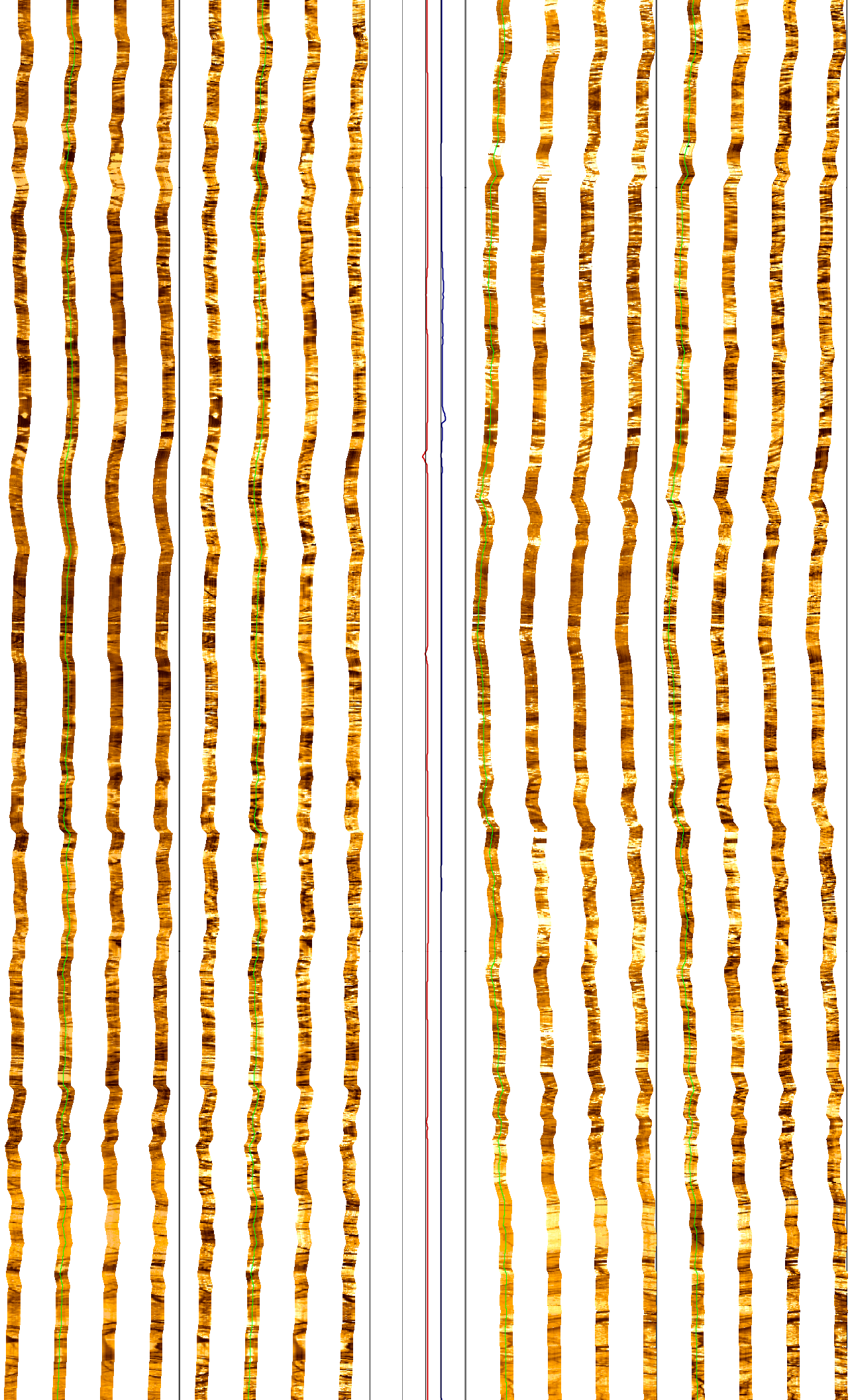


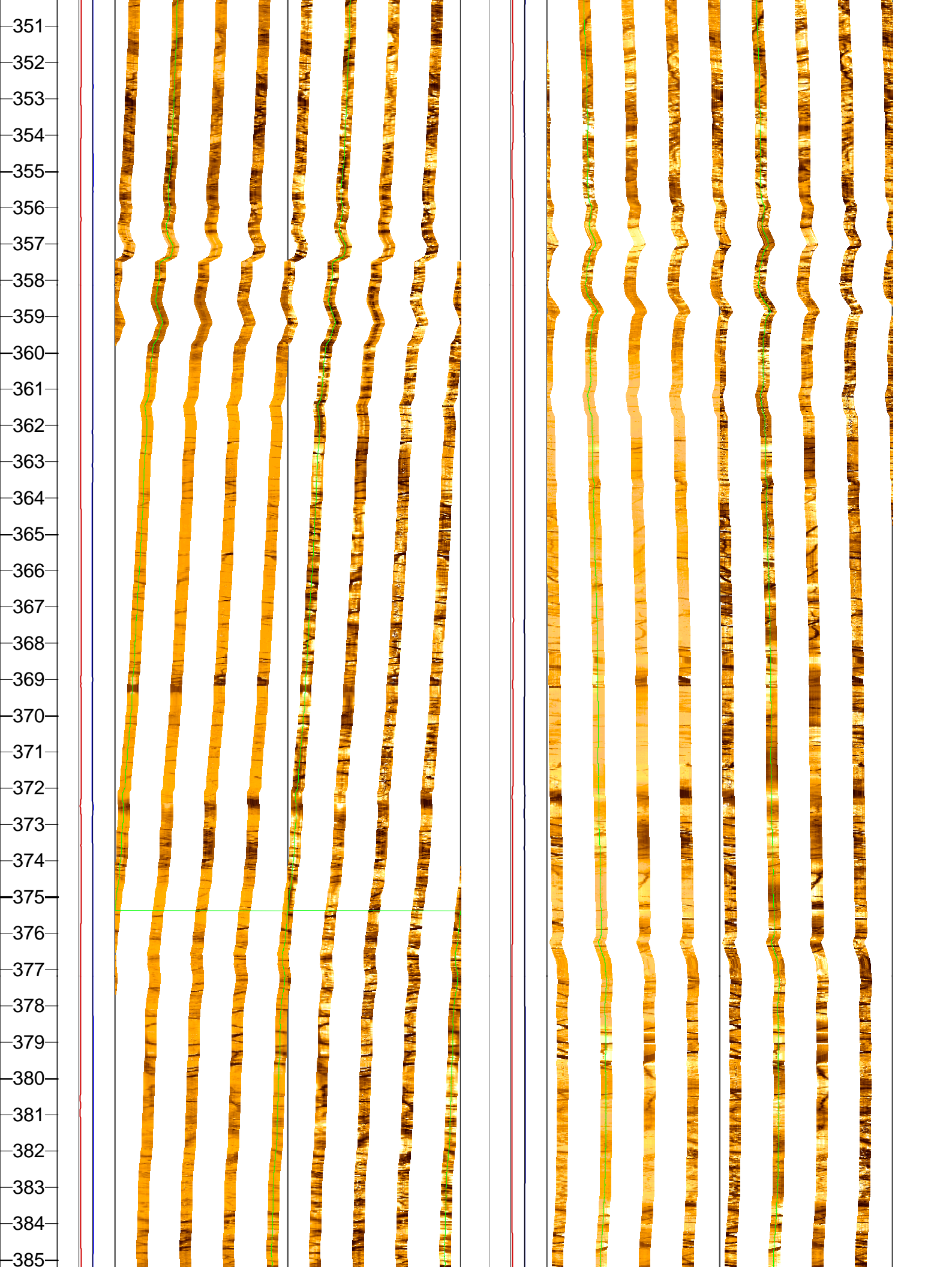


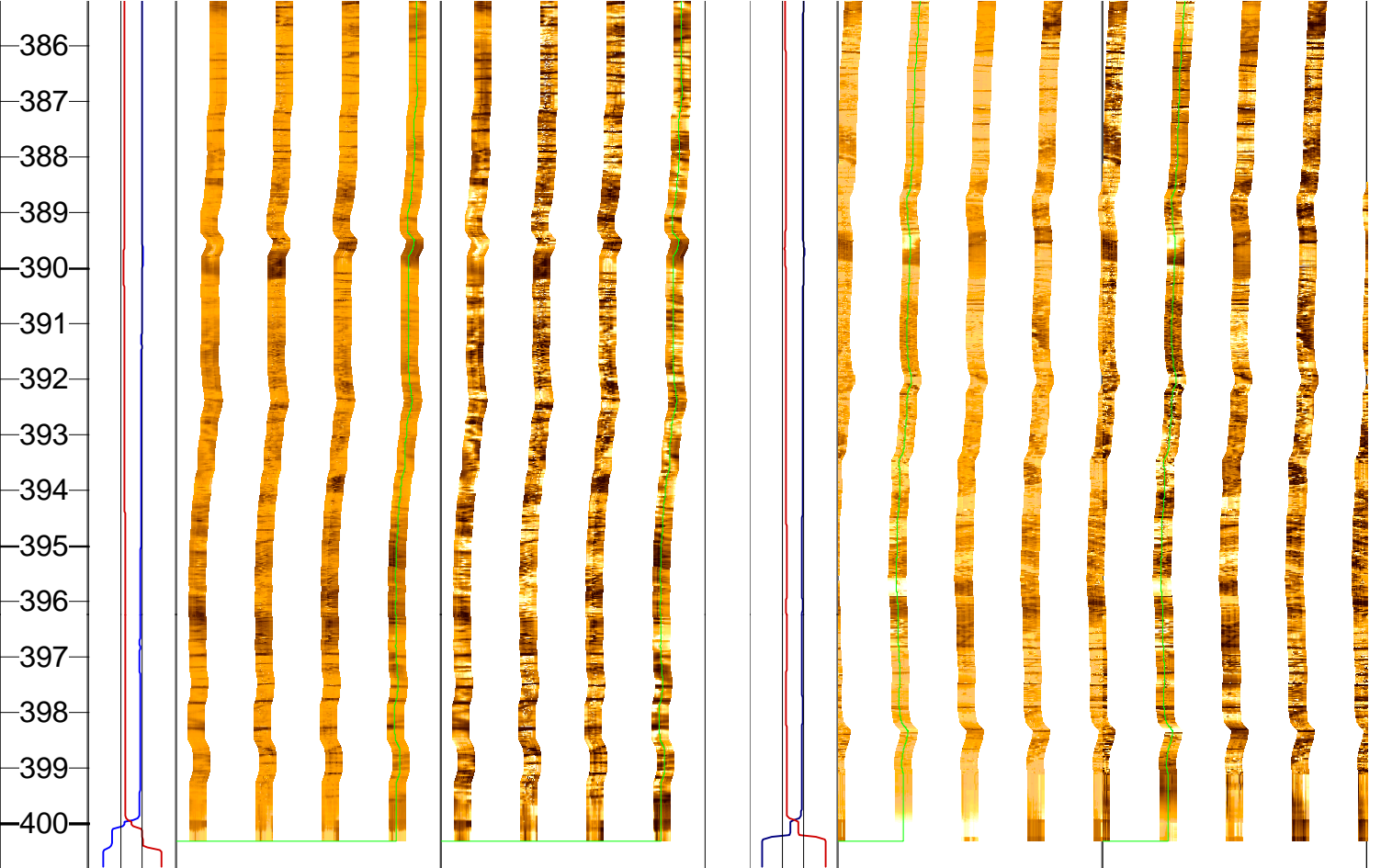




316
317
318
319
320
321
322
323
324
325
326
327
328
329
330
331
332
333
334
335
336
337
338
339
340
341
342
343
344
345
346
347
348
349
350







MD
1 : 125
m

C2@F
16 (in) 0

C1@F
0 (in) 16

FMS_DSI_034LUP
Horizontal Scale: 1 : 20.682
Orientation North

0 120 240 360

Resistivity Conductive
FMS4 Image

FMS_DSI_034LUP
Horizontal Scale: 1 : 20.682
Orientation North

0 120 240 360

Resistivity Conductive
FMS4 Image

C2@F
16 (in) 0

C1@F
0 (in) 16

FMS_DSI_036LUP
Horizontal Scale: 1 : 20.682
Orientation North

0 120 240 360

Resistivity Conductive
FMS4 Image

FMS_DSI_036LUP
Horizontal Scale: 1 : 20.682
Orientation North

0 120 240 360

Resistivity Conductive
FMS4 Image

Company: Lamont Doherty

Well: IODP EXP 304 Site 1309D

Field: Atlantis Massif

Country: Mid Atlantic Ridge

Ocean: Atlantic Ocean

Schlumberger

Formation Micro-Scanner