

Company: Lamont Doherty

Well: IODP EXP 304 Site 1309A

Field: Atlantis Massis

Country: Mid Atlantic Ridge Ocean: Atlantic Ocean

Natural Gamma Ray

Country: Mid Atlantic Ridge		Elev.: K.B. 11.3 m	
Field: Atlantis Massis		G.L. -1653.4 m	
Location: Rig- Joides Resolution		D.F. 11 m	
Well: IODP EXP 304 Site 1309A		Elev.: 0 m	
Company: Lamont Doherty		11.3 m above Perm. Datum	
LOCATION			
Rig- Joides Resolution			
Permanent Datum: _____		GROUND LEVEL _____	
Log Measured From: _____		DES _____	
Drilling Measured From: _____		DES _____	
API Serial No. _____		Max. Hole Devi.	Longitude
		42.11865 W	Latitude
			30.16847 N

Logging Date	Run 1	Run 2	Run
Run Number			
Depth Driller			
Schlumberger Depth			
Bottom Log Interval			
Top Log Interval			
Casing Driller Size @ Depth			
Casing Schlumberger			
Bit Size			
Type Fluid In Hole			
Density			
Fluid Loss			
PH			
Source Of Sample			
RM @ Measured Temperature			
RMF @ Measured Temperature			
RMC @ Measured Temperature			
Source RMF			
RM @ MRT			
RMF @ MRT			
Maximum Recorded Temperatures			
Circulation Stopped			
Time			
Logger On Bottom			
Time			
Unit Number			
Location			
Recorded By			
Witnessed By			

Logging Date	
Run Number	1
Depth Driller	1755.2 m
Schlumberger Depth	1746.5 m
Bottom Log Interval	1744 m
Top Log Interval	1593 m
Casing Driller Size @ Depth	0.000 in @ 1675 m
Casing Schlumberger	1674 m
Bit Size	9.875 in
Type Fluid In Hole	Septolite
Density	1.066 g/cm3
Fluid Loss	0 cm3
PH	
Source Of Sample	
RM @ Measured Temperature	0.322 ohm.m @ 23 degC
RMF @ Measured Temperature	@ @
RMC @ Measured Temperature	@ @
Source RMF	RMC
RM @ MRT	0.362 @ 18 @ 18
RMF @ MRT	@ @
Maximum Recorded Temperatures	18 degC
Circulation Stopped	11/30/04
Time	0400
Logger On Bottom	11/30/04
Time	See Log
Unit Number	99
Location	Houston
Recorded By	Steve Kittredge
Witnessed By	Florence Einaudi

Logging Date	Run 1	Run 2	Run
Run Number			
Depth Driller			
Schlumberger Depth			
Bottom Log Interval			
Top Log Interval			
Casing Driller Size @ Depth			
Casing Schlumberger			
Bit Size			
Type Fluid In Hole			
Density			
Fluid Loss			
PH			
Source Of Sample			
RM @ Measured Temperature			
RMF @ Measured Temperature			
RMC @ Measured Temperature			
Source RMF			
RM @ MRT			
RMF @ MRT			
Maximum Recorded Temperatures			
Circulation Stopped			
Time			
Logger On Bottom			
Time			
Unit Number			
Location			
Recorded By			
Witnessed By			

DISCLAIMER

THE USE OF AND RELIANCE UPON THIS RECORDED-DATA BY THE HEREIN NAMED COMPANY (AND ANY OF ITS AFFILIATES, PARTNERS, REPRESENTATIVES, AGENTS, CONSULTANTS AND EMPLOYEES) IS SUBJECT TO THE TERMS AND CONDITIONS AGREED UPON BETWEEN SCHLUMBERGER AND THE COMPANY, INCLUDING: (a) RESTRICTIONS ON USE OF THE RECORDED-DATA; (b) DISCLAIMERS AND WAIVERS OF WARRANTIES AND REPRESENTATIONS REGARDING COMPANY'S USE OF AND RELIANCE UPON THE RECORDED-DATA; AND (c) CUSTOMER'S FULL AND SOLE RESPONSIBILITY FOR ANY INFERENCE DRAWN OR DECISION MADE IN CONNECTION WITH THE USE OF THIS RECORDED-DATA.

OTHER SERVICES1
 OS1: MESTB/DSI/SGTN
 OS2:
 OS3:
 OS4:
 OS5:

OTHER SERVICES2
 OS1:
 OS2:
 OS3:
 OS4:
 OS5:

REMARKS: RUN NUMBER 1
 Hole Cored with RCB
 All depths in Meters Below Rig Floor (MBRF).
 Hole flushed with Sepiolite
 Sea Floor Driller: 1653.4 MBRF
 Sea Floor Logger: 1653.4 MBRF
 Total Depth Driller: 1755.2 MBRF
 Total Depth Logger: 1746.5
 Casing Bottom Driller: 1675 MBRF
 Casing Bottom Logger: 1674
 APS minitrons off on repeat pass.

REMARKS: RUN NUMBER 2

RUN 1
 SERVICE ORDER #:
 PROGRAM VERSION: 12C0-301
 FLUID LEVEL:

RUN 2
 SERVICE ORDER #:
 PROGRAM VERSION:
 FLUID LEVEL:

LOGGED INTERVAL	START	STOP

LOGGED INTERVAL	START	STOP

EQUIPMENT DESCRIPTION

RUN 1
 SURFACE EQUIPMENT
 WITM (DTS)-A
 LCM-AA
 SFT-281 6250
 SFT-178 6250
 GSR-U 135

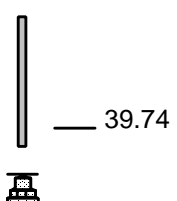
RUN 2

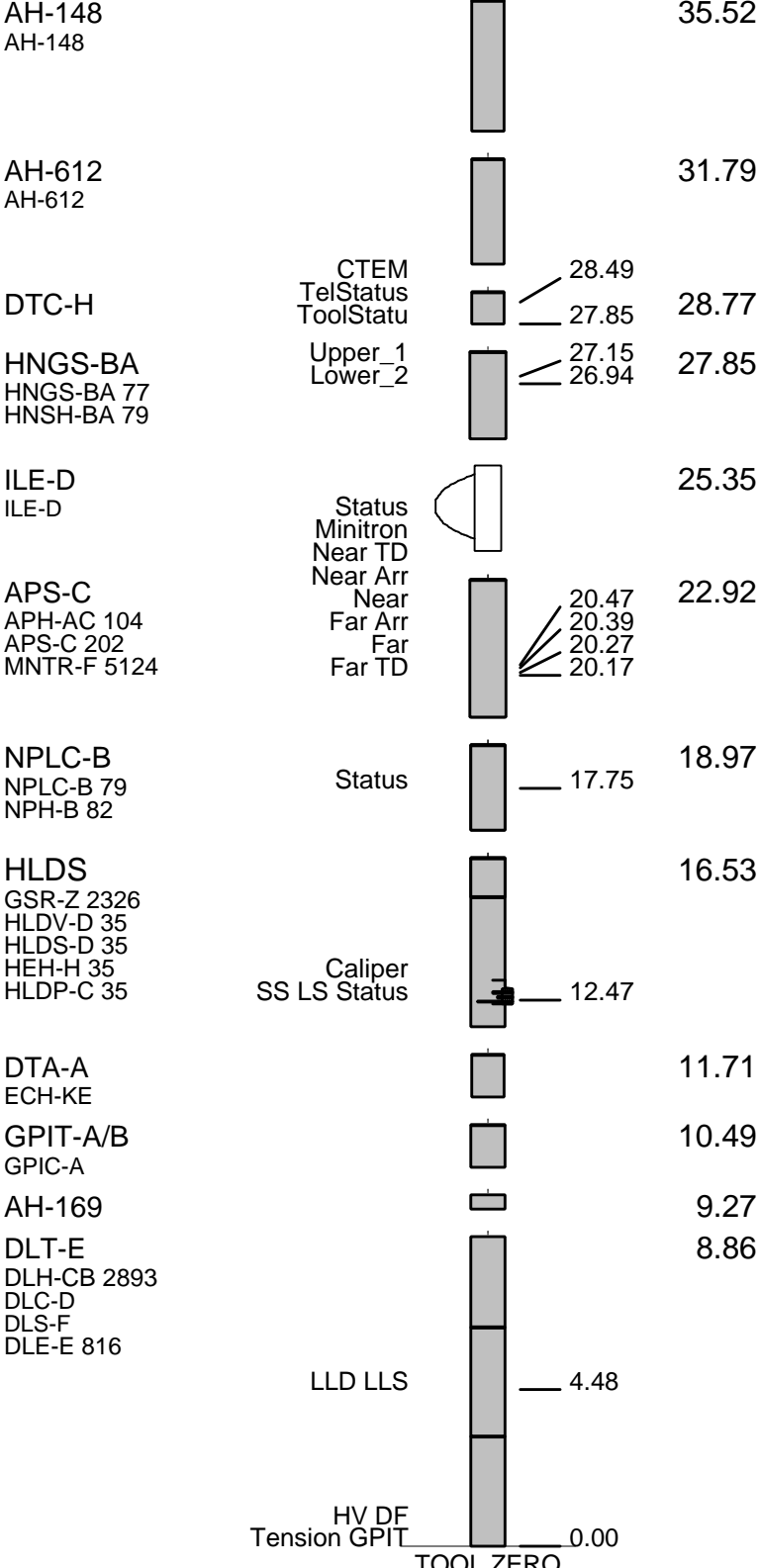
DOWNHOLE EQUIPMENT

BSP 60.80
 BRT-S

SP SPARC 39.74

LEH-QT 36.41





TOOL ZERO

MAXIMUM STRING DIAMETER 3.88 IN
 MEASUREMENTS RELATIVE TO TOOL ZERO
 ALL LENGTHS IN METERS

Output DLIS Files

DEFAULT DLL_LDL_APS_NGS_042LUP FN:41 PRODUCER 30-Nov-2004 12:10 1746.5 M 1593.0 M

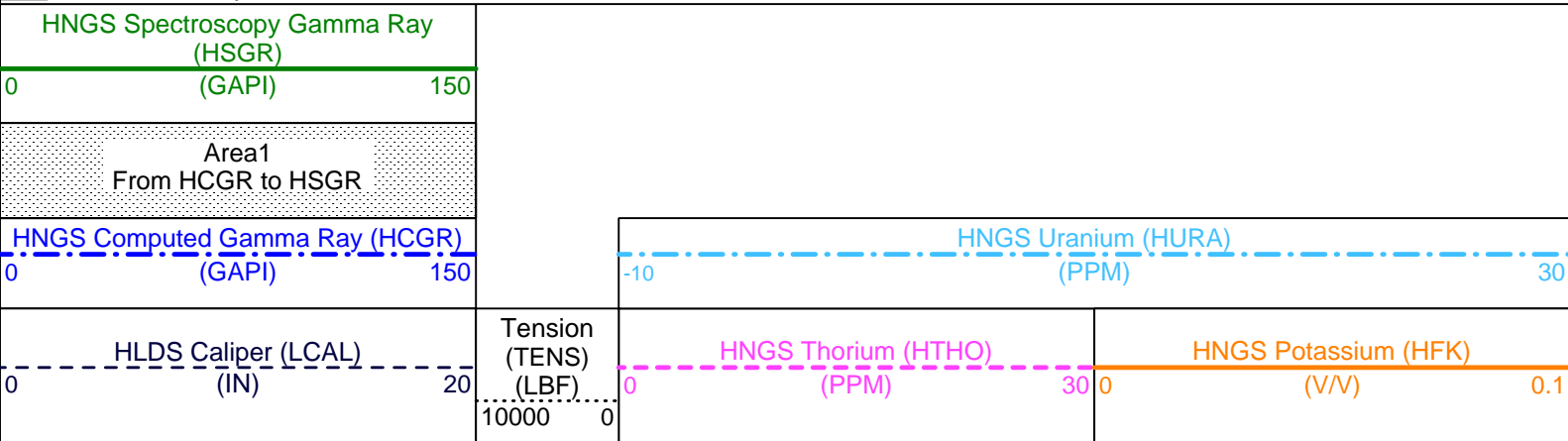
OP System Version: 12C0-301
MCM

Main Up Log

DLT-E	12C0-301	GPIT-AB	12C0-301
DTA-A	12C0-301	HLDS	12C0-301
NPLC-B	12C0-301	APS-C	12C0-301
HNGS-BA	12C0-301	DTC-H	12C0-301
BSP	12C0-301		

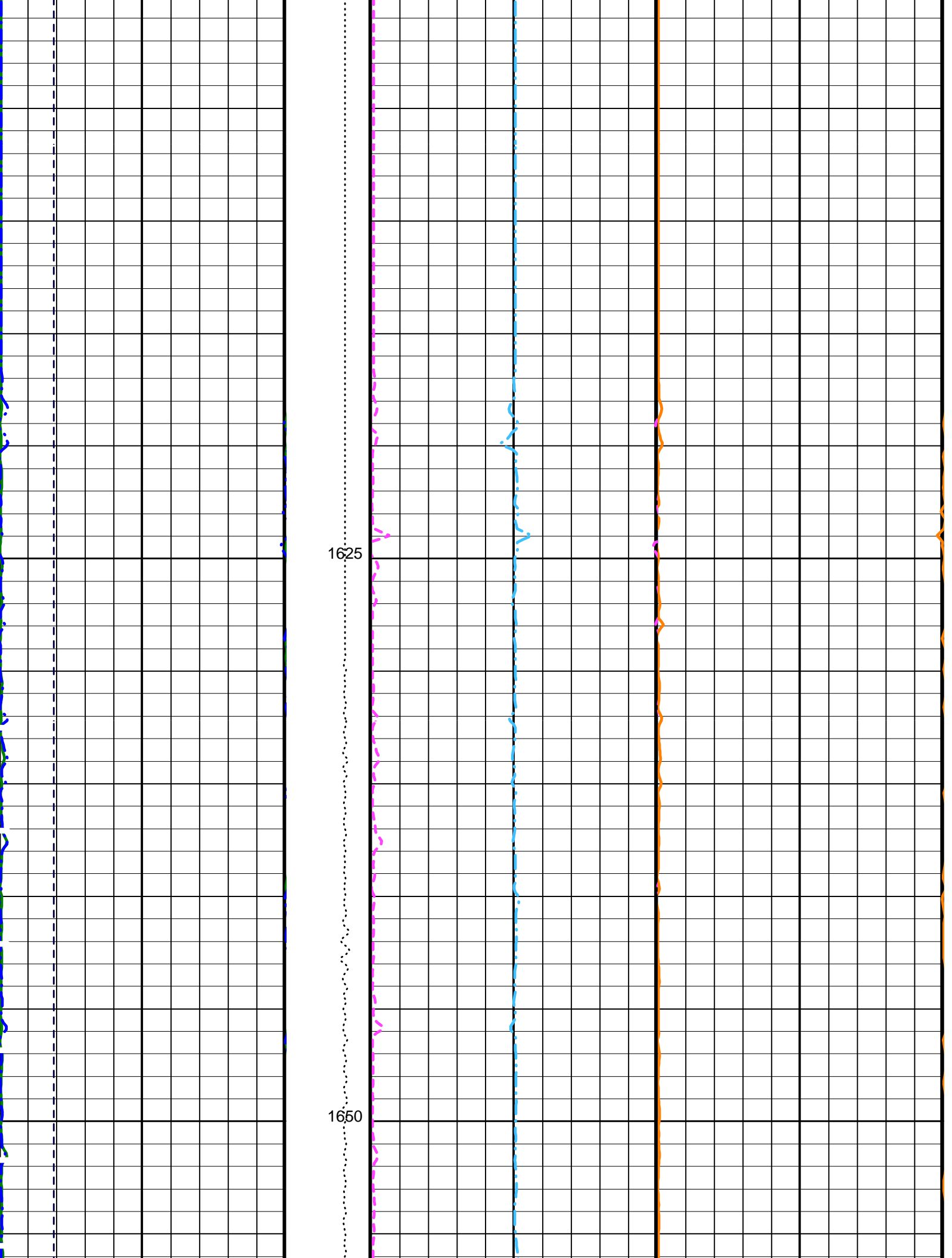
PIP SUMMARY

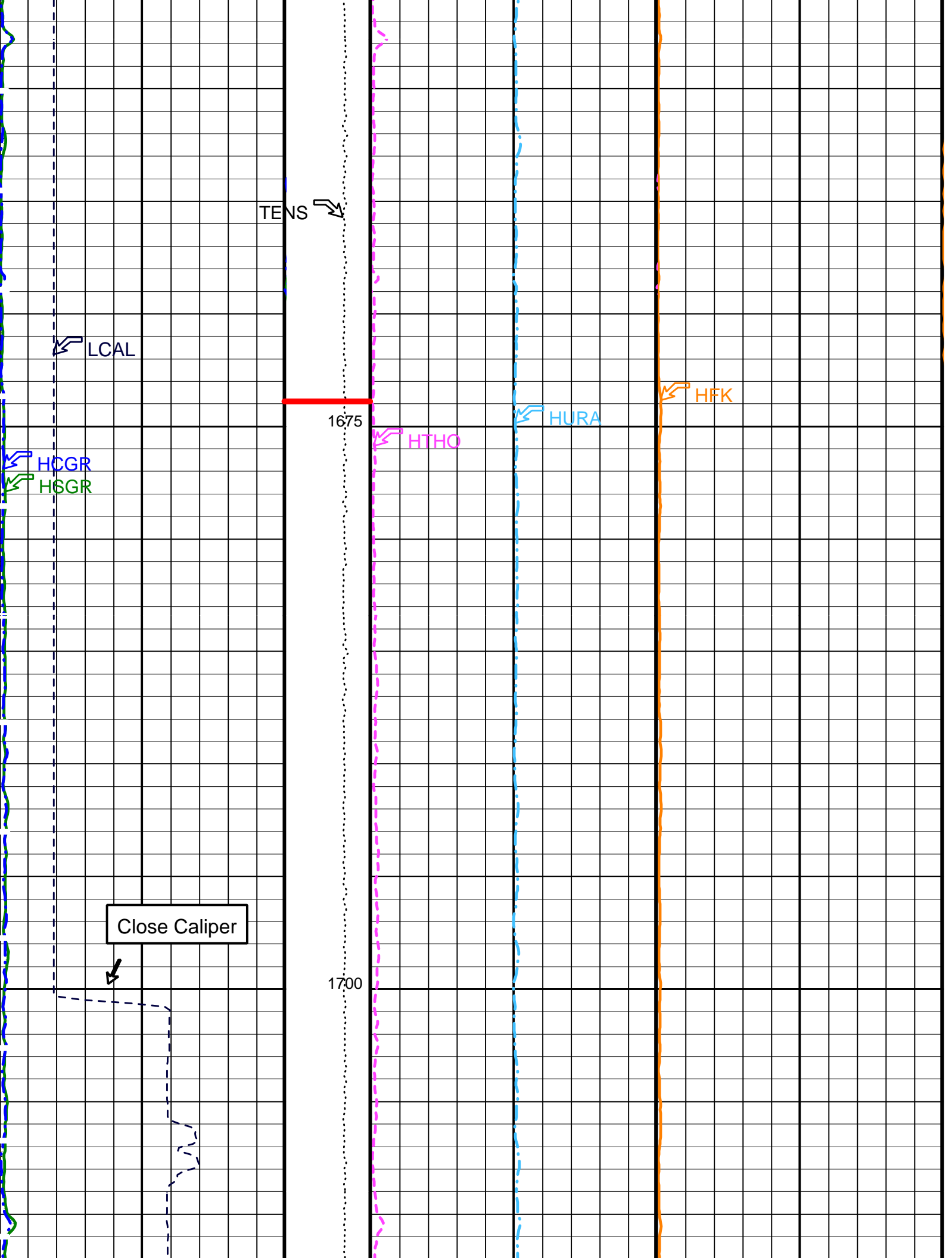
Time Mark Every 60 S



Last Reading

1600





TENS ↘

↙ LCAL

1675

↙ HTHO

↙ HURA

↙ HFK

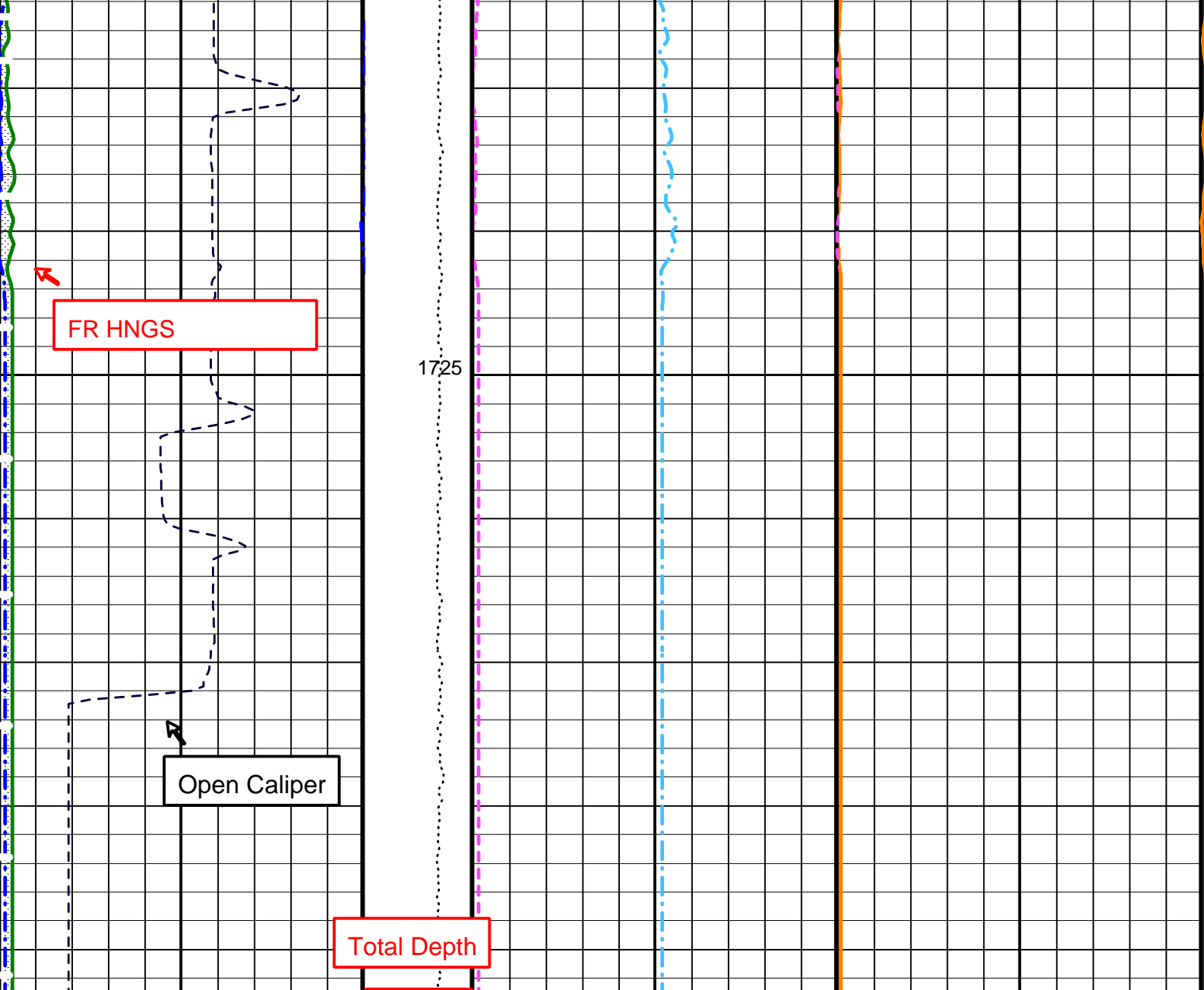
↙ HCGR

↙ HSGR

Close Caliper

↙

1700



HLDS Caliper (LCAL) (IN)	0	20	Tension (TENS) (LBF)	0	10000	HNGS Thorium (HTHO) (PPM)	0	30	HNGS Potassium (HFK) (V/V)	0	0.1
HNGS Computed Gamma Ray (HCGR) (GAPI)	0	150				HNGS Uranium (HURA) (PPM)	-10	30			
Area1 From HCGR to HSGR											
HNGS Spectroscopy Gamma Ray (HSGR) (GAPI)	0	150									

PIP SUMMARY

Time Mark Every 60 S

Parameters

DLIS Name	Description	Value
BHS	APS-C: Accelerator-Porosity Tool	
GCSE	Borehole Status	OPEN
	Generalized Caliper Selection	BS
	HNGS-BA: Hostile Natural Gamma Ray Sonde	
BAR1	HNGS Detector 1 Barite Constant	1
BAR2	HNGS Detector 2 Barite Constant	1

BHK	HNGS Detector 2 Barite Constant	0	
BHS	Borehole Status	OPEN	
CSD1	Inner Casing Outer Diameter	0	IN
CSD2	Outer Casing Outer Diameter	0	IN
CSW1	Inner Casing Weight	0	LB/F
CSW2	Outer Casing Weight	0	LB/F
DBCC	HNGS Barite Constant Correction Flag	NONE	
GCSE	Generalized Caliper Selection	BS	
H1P	HNGS Detector 1 Allow/Disallow In Processing	ALLOW	
H2P	HNGS Detector 2 Allow/Disallow In Processing	ALLOW	
HABK	HNGS Borehole Potassium Running Average	0	
HALF	HNGS Alpha Filter Length	60	IN
HCRB	HNGS Apply Borehole Potassium Correction	NONE	
HMWM	Mud Weighting Material	NATU	
HNPE	HNGS Processing Enable	YES	
S1BI	HNGS Detector 1 Calibration Bismuth Count Rate	1.3	CPS
S2BI	HNGS Detector 2 Calibration Bismuth Count Rate	1.3	CPS
SGRC	HNGS Standard Gamma-Ray Correction Flag	YES	
TPOS	Tool Position	ECCE	
VBA1	HNGS Detector 1 Variable Barite Factor Running Average	0	
VBA2	HNGS Detector 2 Variable Barite Factor Running Average	0	
HOLEV: Integrated Hole/Cement Volume			
BHS	Borehole Status	OPEN	
GCSE	Generalized Caliper Selection	BS	
System and Miscellaneous			
BS	Bit Size	9.875	IN
DFD	Drilling Fluid Density	1.10	G/C3

Format: HNGSYields Vertical Scale: 1:200 Graphics File Created: 30-Nov-2004 12:11

OP System Version: 12C0-301			
MCM			
DLT-E	12C0-301	GPIT-A/B	12C0-301
DTA-A	12C0-301	HLDS	12C0-301
NPLC-B	12C0-301	APS-C	12C0-301
HNGS-BA	12C0-301	DTC-H	12C0-301
BSP	12C0-301		

Output DLIS Files					
DEFAULT	DLL_LDL_APS_NGS_042LUP	FN:41	PRODUCER	30-Nov-2004 12:10	

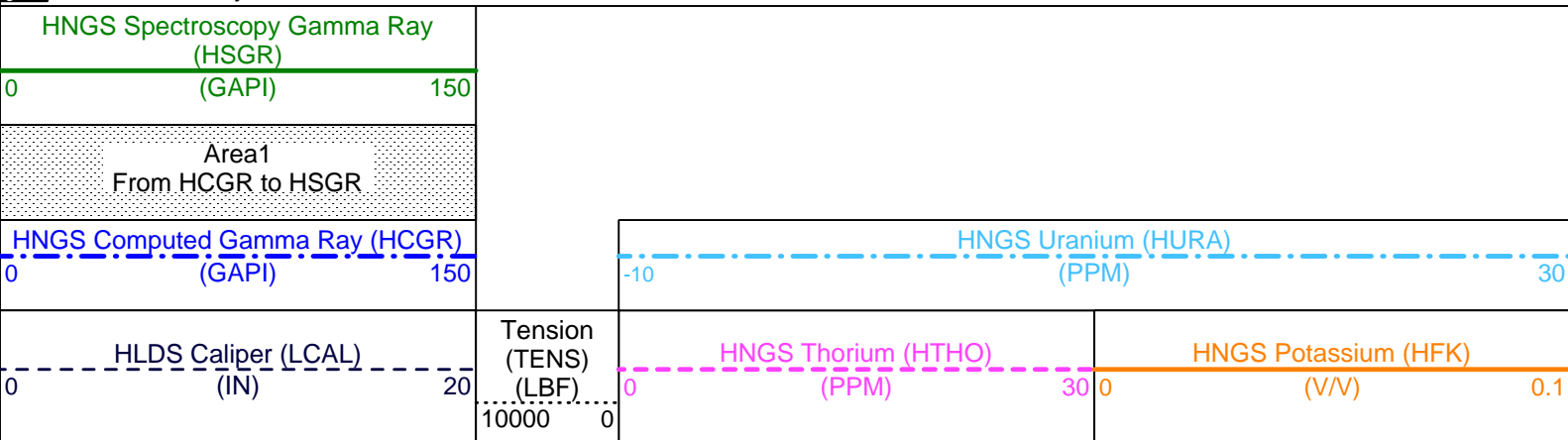
Company: Lamont Doherty Earth Observatory Well: 1309

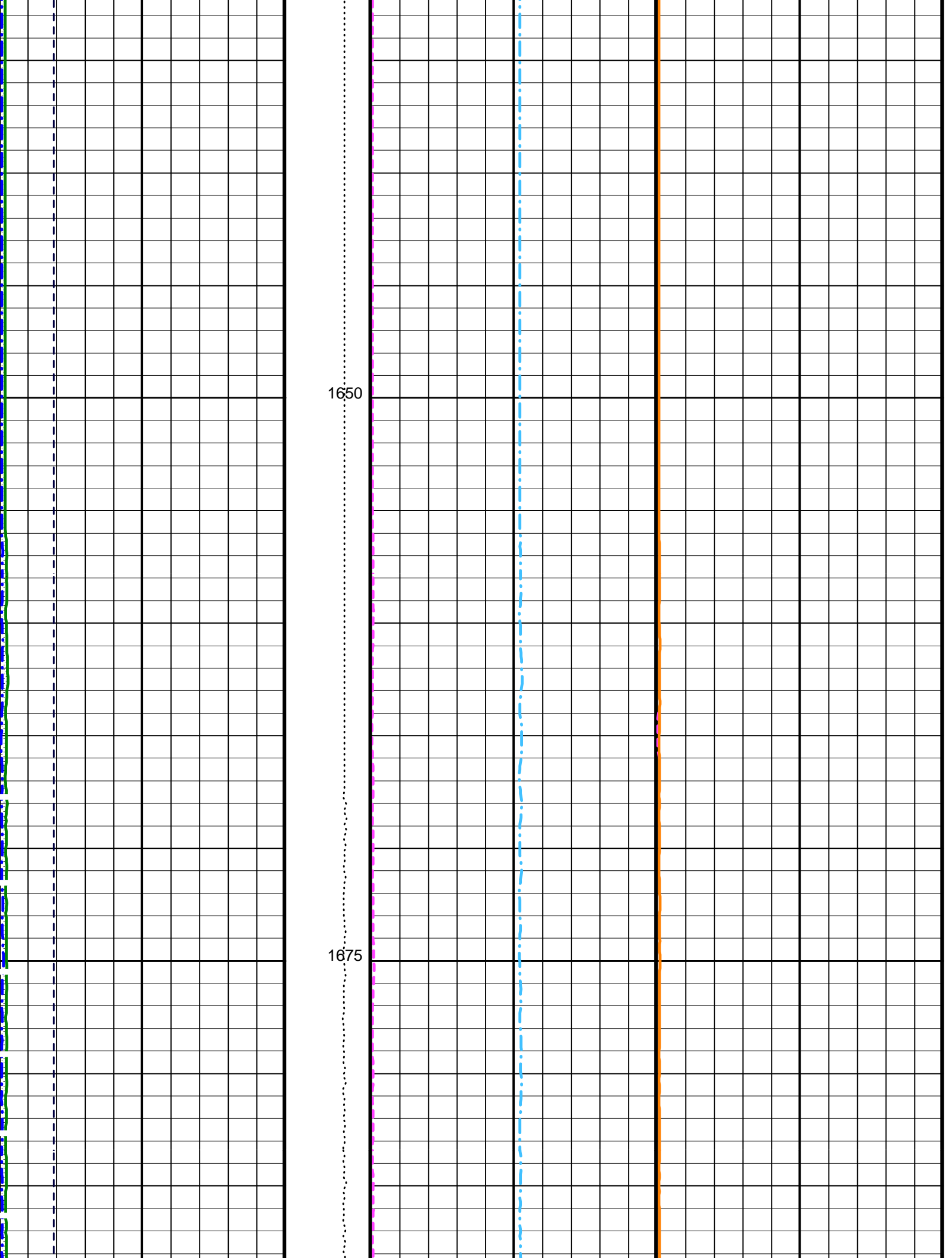
Output DLIS Files					
DEFAULT	DLL_LDL_APS_NGS_040LUP	FN:39	PRODUCER	30-Nov-2004 11:31	1746.5 M 1632.2 M

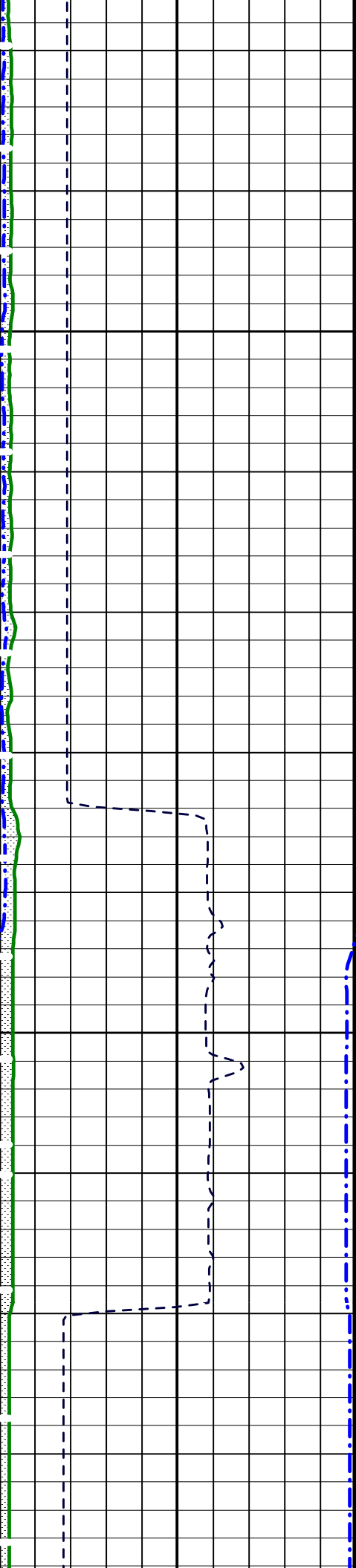
OP System Version: 12C0-301			
MCM			
DLT-E	12C0-301	GPIT-A/B	12C0-301
DTA-A	12C0-301	HLDS	12C0-301
NPLC-B	12C0-301	APS-C	12C0-301
HNGS-BA	12C0-301	DTC-H	12C0-301
BSP	12C0-301		

Repeat Up Log

PIP SUMMARY

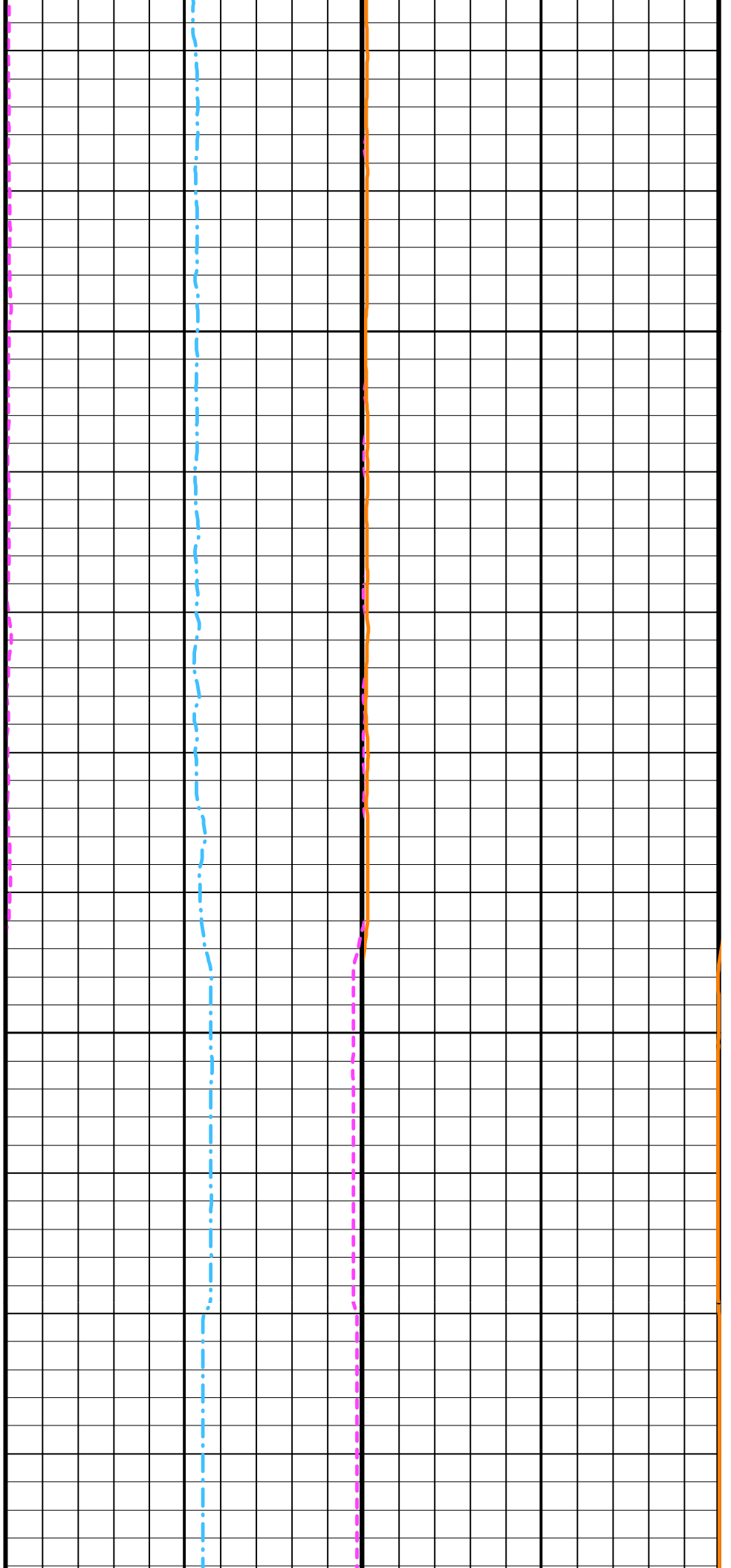


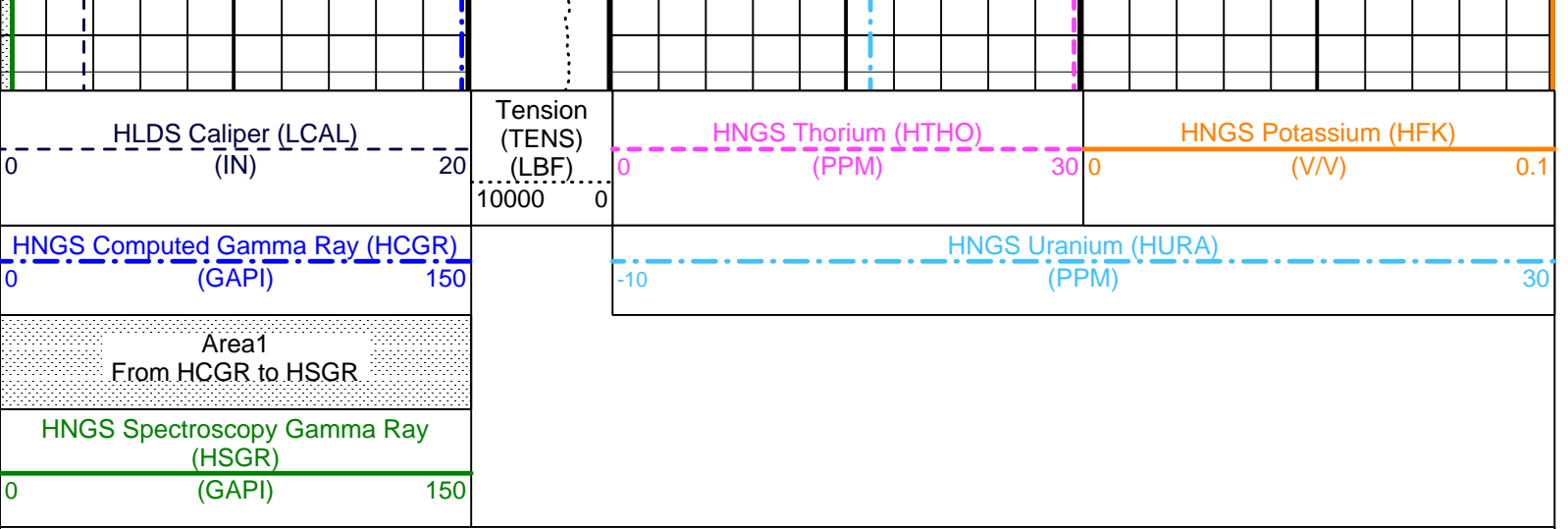




1700

1725





PIP SUMMARY

Time Mark Every 60 S

Parameters

DLIS Name	Description	Value
APS-C: Accelerator-Porosity Tool		
BHS	Borehole Status	OPEN
GCSE	Generalized Caliper Selection	LCAL
HNGS-BA: Hostile Natural Gamma Ray Sonde		
BAR1	HNGS Detector 1 Barite Constant	1
BAR2	HNGS Detector 2 Barite Constant	1
BHK	HNGS Borehole Potassium Correction Concentration	0
BHS	Borehole Status	OPEN
CSD1	Inner Casing Outer Diameter	0 IN
CSD2	Outer Casing Outer Diameter	0 IN
CSW1	Inner Casing Weight	0 LB/F
CSW2	Outer Casing Weight	0 LB/F
DBCC	HNGS Barite Constant Correction Flag	NONE
GCSE	Generalized Caliper Selection	LCAL
H1P	HNGS Detector 1 Allow/Disallow In Processing	ALLOW
H2P	HNGS Detector 2 Allow/Disallow In Processing	ALLOW
HABK	HNGS Borehole Potassium Running Average	0
HALF	HNGS Alpha Filter Length	60 IN
HCRB	HNGS Apply Borehole Potassium Correction	NONE
HMWM	Mud Weighting Material	NATU
HNPE	HNGS Processing Enable	YES
S1BI	HNGS Detector 1 Calibration Bismuth Count Rate	0.1 CPS
S2BI	HNGS Detector 2 Calibration Bismuth Count Rate	0.1 CPS
SGRC	HNGS Standard Gamma-Ray Correction Flag	YES
TPOS	Tool Position	ECCE
VBA1	HNGS Detector 1 Variable Barite Factor Running Average	0
VBA2	HNGS Detector 2 Variable Barite Factor Running Average	0
HOLEV: Integrated Hole/Cement Volume		
BHS	Borehole Status	OPEN
GCSE	Generalized Caliper Selection	LCAL
System and Miscellaneous		
BS	Bit Size	9.875 IN
DFD	Drilling Fluid Density	1.10 G/C3

Format: HNGSYields Vertical Scale: 1:200 Graphics File Created: 30-Nov-2004 11:31

OP System Version: 12C0-301
MCM

DLT-E	12C0-301	GPIT-A/B	12C0-301
DTA-A	12C0-301	HLDS	12C0-301
NPLC-B	12C0-301	APS-C	12C0-301
HNGS-BA	12C0-301	DTC-H	12C0-301
BSP	12C0-301		

Output DLIS Files

DEFAULT DLL_LDL_APS_NGS_040LUP FN:39 PRODUCER 30-Nov-2004 11:31

Well: IODP EXP 304 Site 1309A
Field: Atlantis Massis
Country: Mid Atlantic Ridge
Ocean: Atlantic Ocean

Natural Gamma Ray