

**Company:** Lamont Doherty

**Well:** IODP EXP 304 Site 1309B

**Field:** Atlantis Massif

**Country:** Mid Atlantic Ridge **Ocean:** Atlantic Ocean

## Formation Micro-Scanner

<b>Country:</b> Mid Atlantic Ridge		<b>Field:</b> Atlantis Massif		<b>Location:</b> Rig- Joides Resolution		<b>Well:</b> IODP EXP 304 Site 1309B		<b>Company:</b> Lamont Doherty	
<b>LOCATION</b>					Rig- Joides Resolution		Elev.: K.B. 11.3 m G.L. -1653.4 m D.F. 11 m		
Permanent Datum:					GROUND LEVEL		Elev.: 0 m		
Log Measured From:					DES		11.3 m above Perm. Datum		
Drilling Measured From:					DES				
API Serial No.			Max. Hole Devi.		Longitude		Latitude		
					42.11665 W		30.16847 N		

<b>Logging Date</b>	
Run Number	1
Depth Driller	1755.2 m
Schlumberger Depth	1749 m
Bottom Log Interval	1673 m
Top Log Interval	1635.6 m
Casing Driller Size @ Depth	0.000 in @ 1675 m
Casing Schlumberger	1673.5 m @
Bit Size	9.875 in
Type Fluid In Hole	Fresh Water
Density	1.066 g/cm3
Fluid Loss	PH
Source Of Sample	
RM @ Measured Temperature	0.322 ohm.m @ 23 degC
RMF @ Measured Temperature	@ @
RMC @ Measured Temperature	@ @
Source RMF	RMC
RM @ MRT	0.455 @ 10 @ 10 @
Maximum Recorded Temperatures	10 degC
Circulation Stopped	11/30/04 0400
Logger On Bottom	11/30/04 See Log
Unit Number	99 Houston
Recorded By	Steve Kittredge
Witnessed By	Florence Einaudi

	Run 1	Run 2	Run
<b>Logging Date</b>			
Run Number			
Depth Driller			
Schlumberger Depth			
Bottom Log Interval			
Top Log Interval			
Casing Driller Size @ Depth			
Casing Schlumberger			
Bit Size			
Type Fluid In Hole			
Density			
Fluid Loss			
Source Of Sample			
RM @ Measured Temperature			
RMF @ Measured Temperature			
RMC @ Measured Temperature			
Source RMF			
RM @ MRT			
Maximum Recorded Temperatures			
Circulation Stopped			
Logger On Bottom			
Unit Number			
Recorded By			
Witnessed By			

DISCLAIMER

THE USE OF AND RELIANCE UPON THIS RECORDED-DATA BY THE HEREIN NAMED COMPANY (AND ANY OF ITS AFFILIATES, PARTNERS, REPRESENTATIVES, AGENTS, CONSULTANTS AND EMPLOYEES) IS SUBJECT TO THE TERMS AND CONDITIONS AGREED UPON BETWEEN SCHLUMBERGER AND THE COMPANY, INCLUDING: (a) RESTRICTIONS ON USE OF THE RECORDED-DATA; (b) DISCLAIMERS AND WAIVERS OF WARRANTIES AND REPRESENTATIONS REGARDING COMPANY'S USE OF AND RELIANCE UPON THE RECORDED-DATA; AND (c) CUSTOMER'S FULL AND SOLE RESPONSIBILITY FOR ANY INFERENCE DRAWN OR DECISION MADE IN CONNECTION WITH THE USE OF THIS RECORDED-DATA.





OTHER SERVICES1 OS1: DLL/HLDS/APS OS2: HNGS/GPIT OS3: OS4: OS5:	OTHER SERVICES2 OS1: OS2: OS3: OS4: OS5:
--	---

REMARKS: RUN NUMBER 1 Hole Cored with RCB All depths in Meters Below Rig Floor (MBRF). Hole flushed with Sepiolite Sea Floor Driller: 1653.4 MBRF Sea Floor Logger: 1653.4 MBRF Total Depth Driller: 1755.2 MBRF Total Depth Logger: 1749 MBRF Casing Bottom Driller: 1675 MBRF Casing Bottom Logger: 1673.5 mbrf Had problems getting tool back in pipe. High noise level on DSI due to hole deviation.	REMARKS: RUN NUMBER 2
---	-----------------------

RUN 1			RUN 2		
SERVICE ORDER #:			SERVICE ORDER #:		
PROGRAM VERSION:	12C0-301		PROGRAM VERSION:		
FLUID LEVEL:			FLUID LEVEL:		
LOGGED INTERVAL	START	STOP	LOGGED INTERVAL	START	STOP

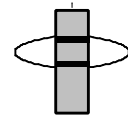
EQUIPMENT DESCRIPTION

RUN 1		RUN 2	
SURFACE EQUIPMENT			
GSR-U/Y WITM (DTS)-A			

DOWNHOLE EQUIPMENT			
LEH-QT			32.33
LEH-QT			
DTC-H	CTEM		31.16
ECH-KC	TelStatus		31.44
	ToolStatu		30.53
SGT-N	Gamma Ray		30.25
SGH-K 2448			30.53

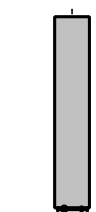
SGC-TB 9582  
SGD-TAA

AH-MCD  
AH-MCD

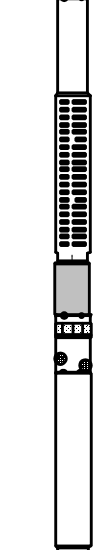


28.85

DSST-B  
SPAC-B 16  
ECH-SD 16  
SMDR-BD 8070  
SSIJ-BA 10  
SMDX-AA 66

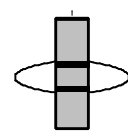


26.73



PWF — 11.18

AH-MCD  
AH-MCD



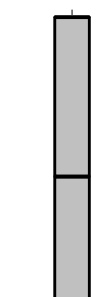
11.18

DTA-A  
ECH-KE  
DTA-A 8231



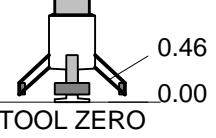
8.90

MEST-B  
MEAH-B 769  
MEAC-A  
MEPH-A 769  
GPIC-A 719  
MEPC-AB  
MEDS-B 724

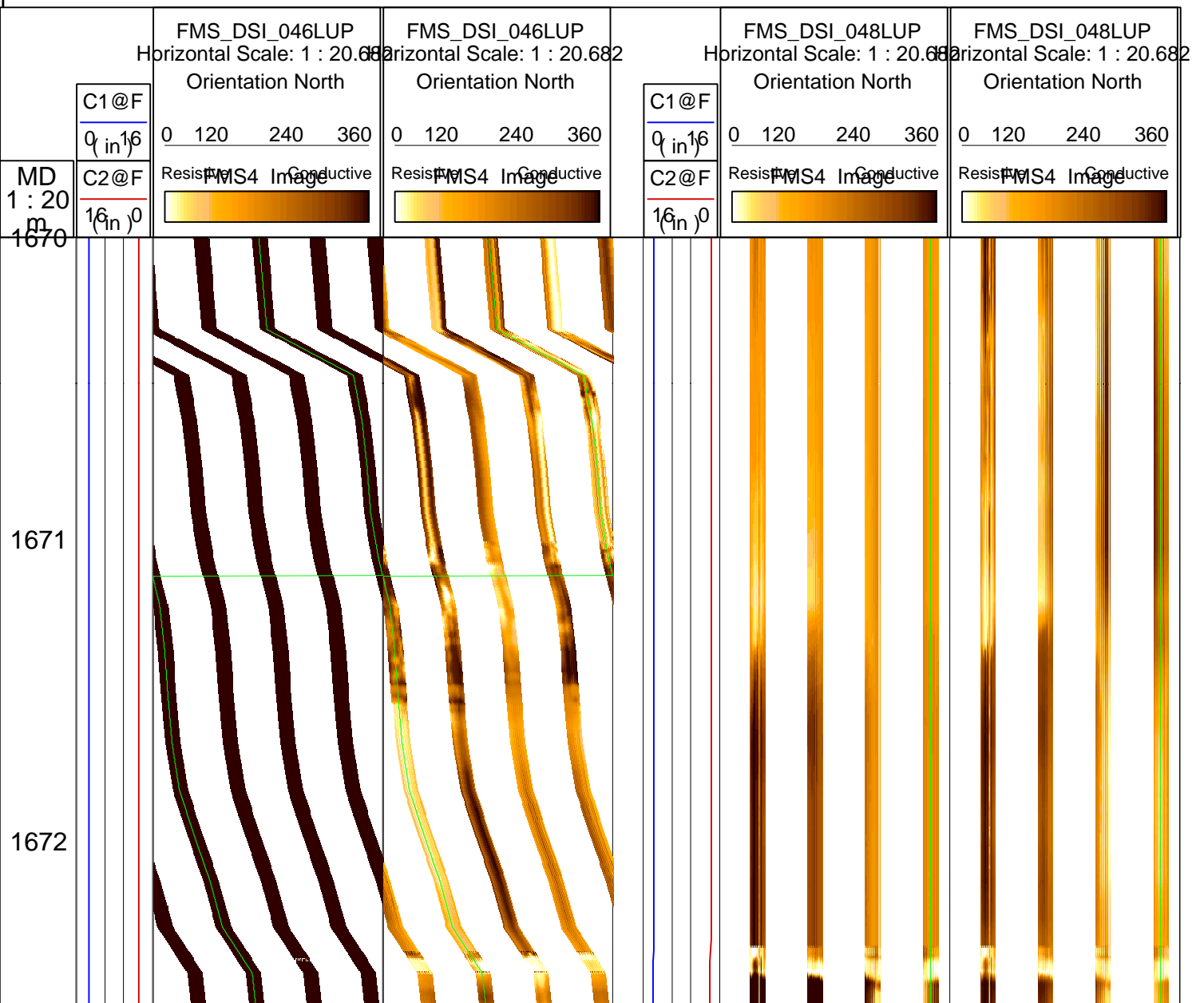


7.68

MEDR MEAC  
MEPC MEDS-B  
HV DF  
Tension GPIT



MAXIMUM STRING DIAMETER 4.50 IN  
MEASUREMENTS RELATIVE TO TOOL ZERO  
ALL LENGTHS IN METERS



1673

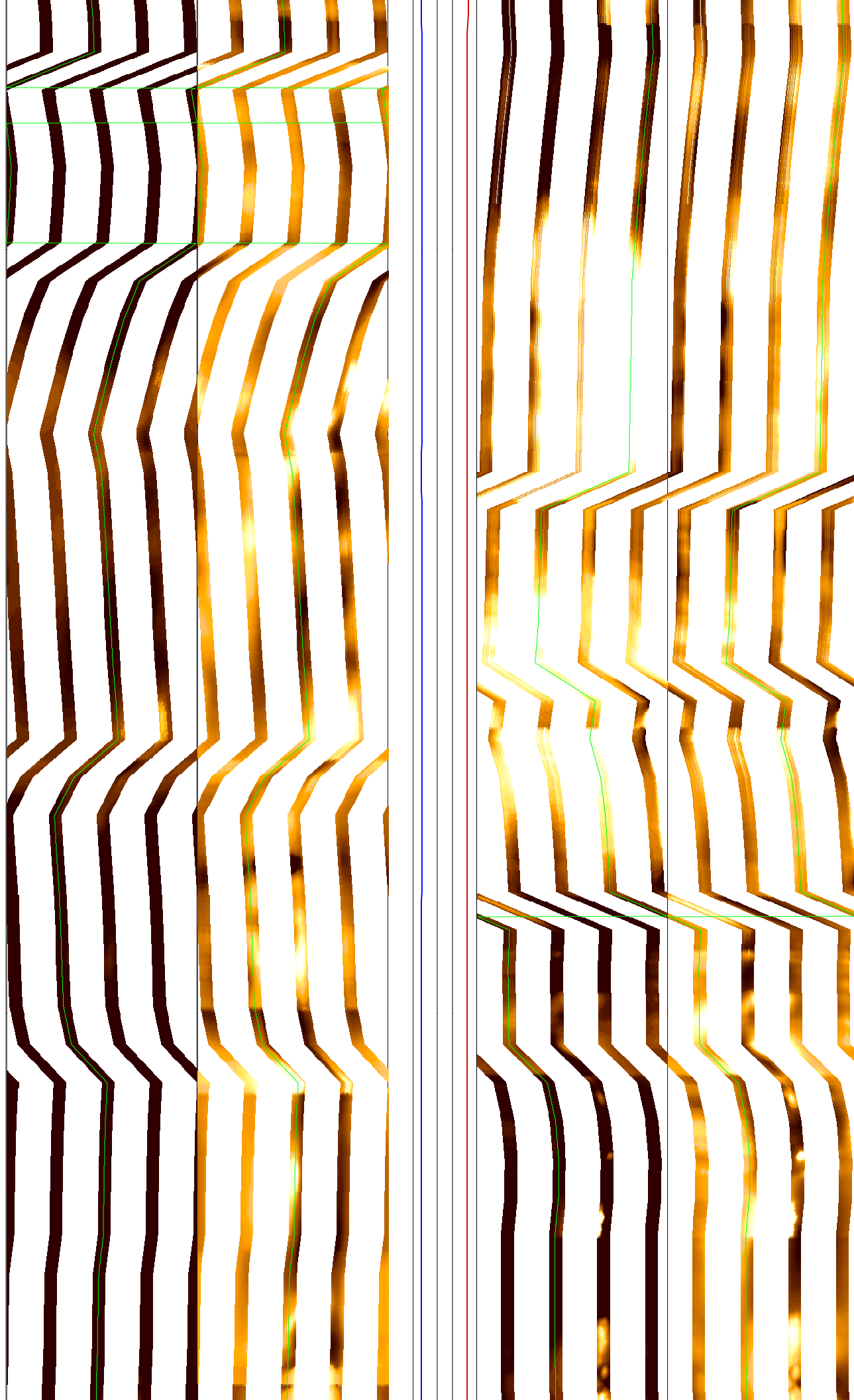
1674

1675

1676

1677

1678



1679

1680

1681

1682

1683

1684

1685

1686

1687

1688

1689



1690

1691

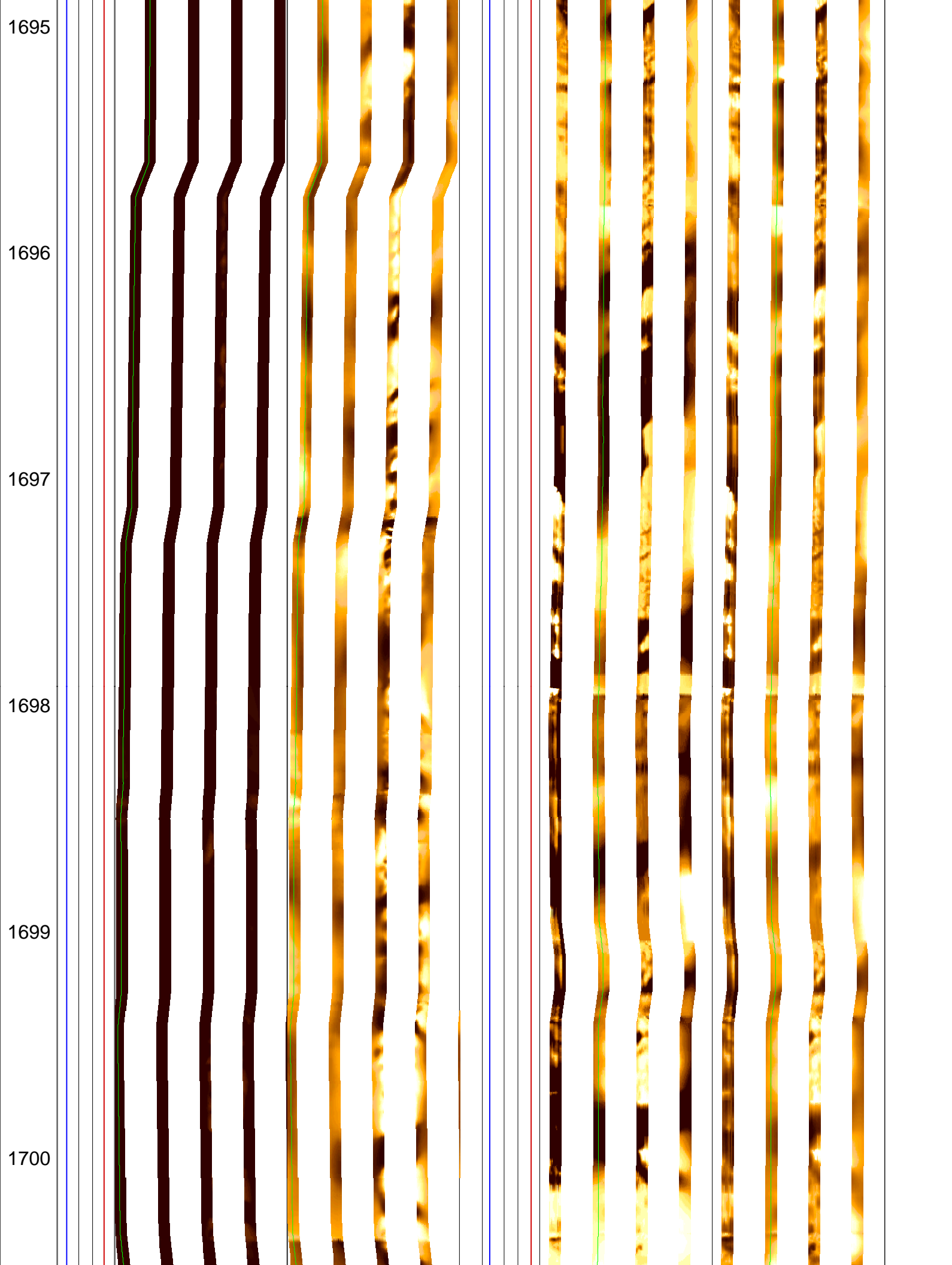
1692

1693

1694







1695

1696

1697

1698

1699

1700

1701

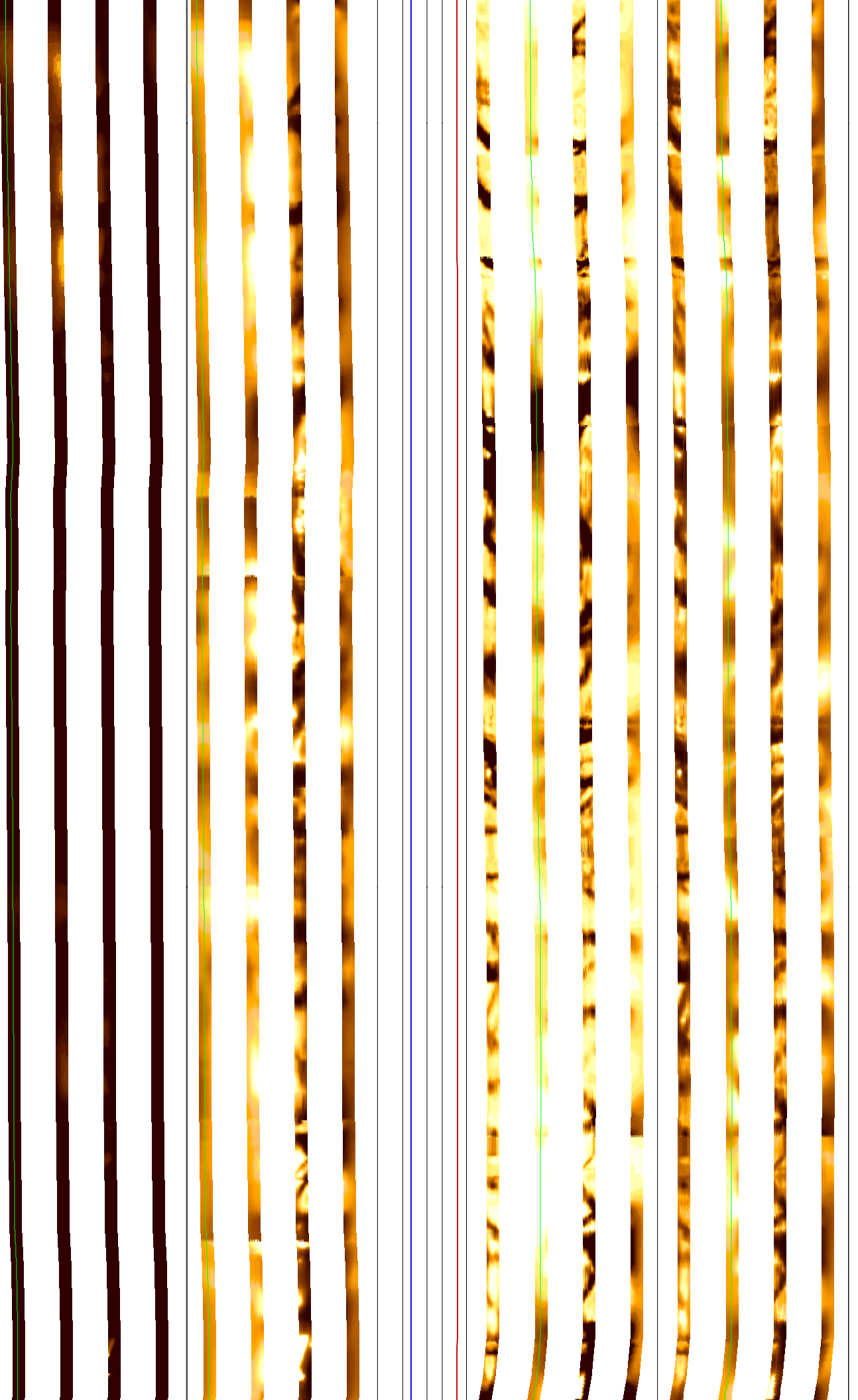
1702

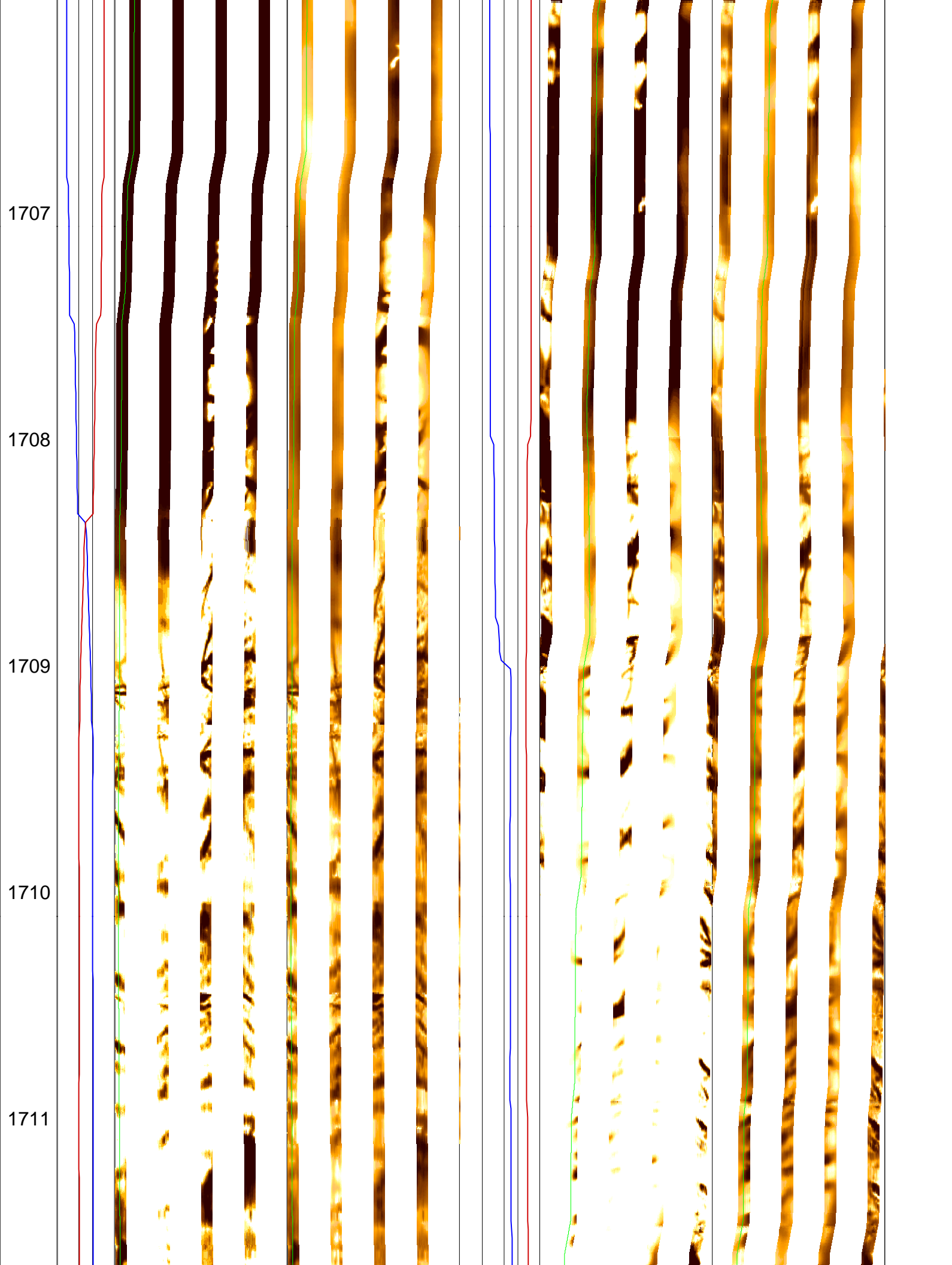
1703

1704

1705

1706





1712

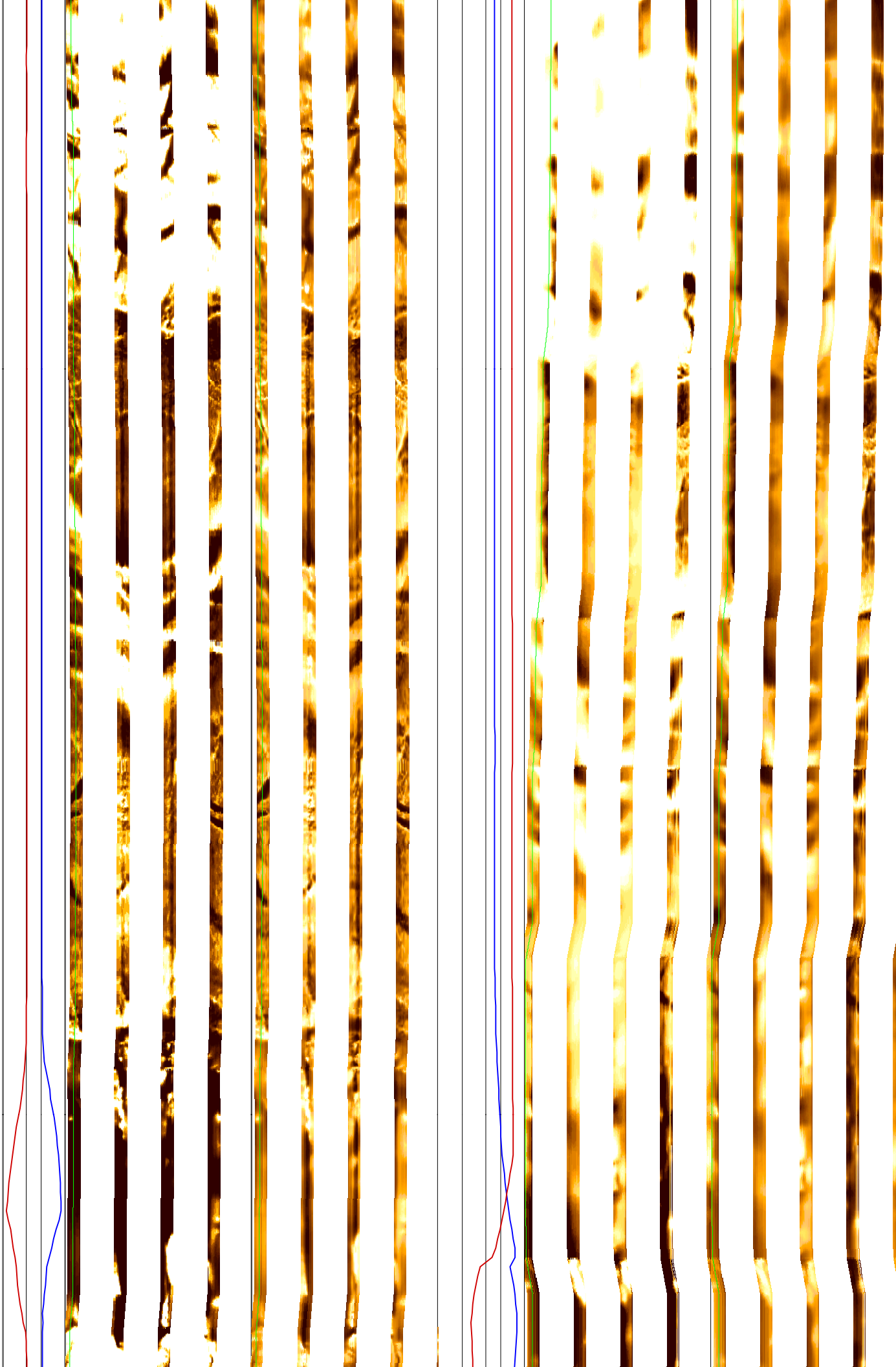
1713

1714

1715

1716

1717



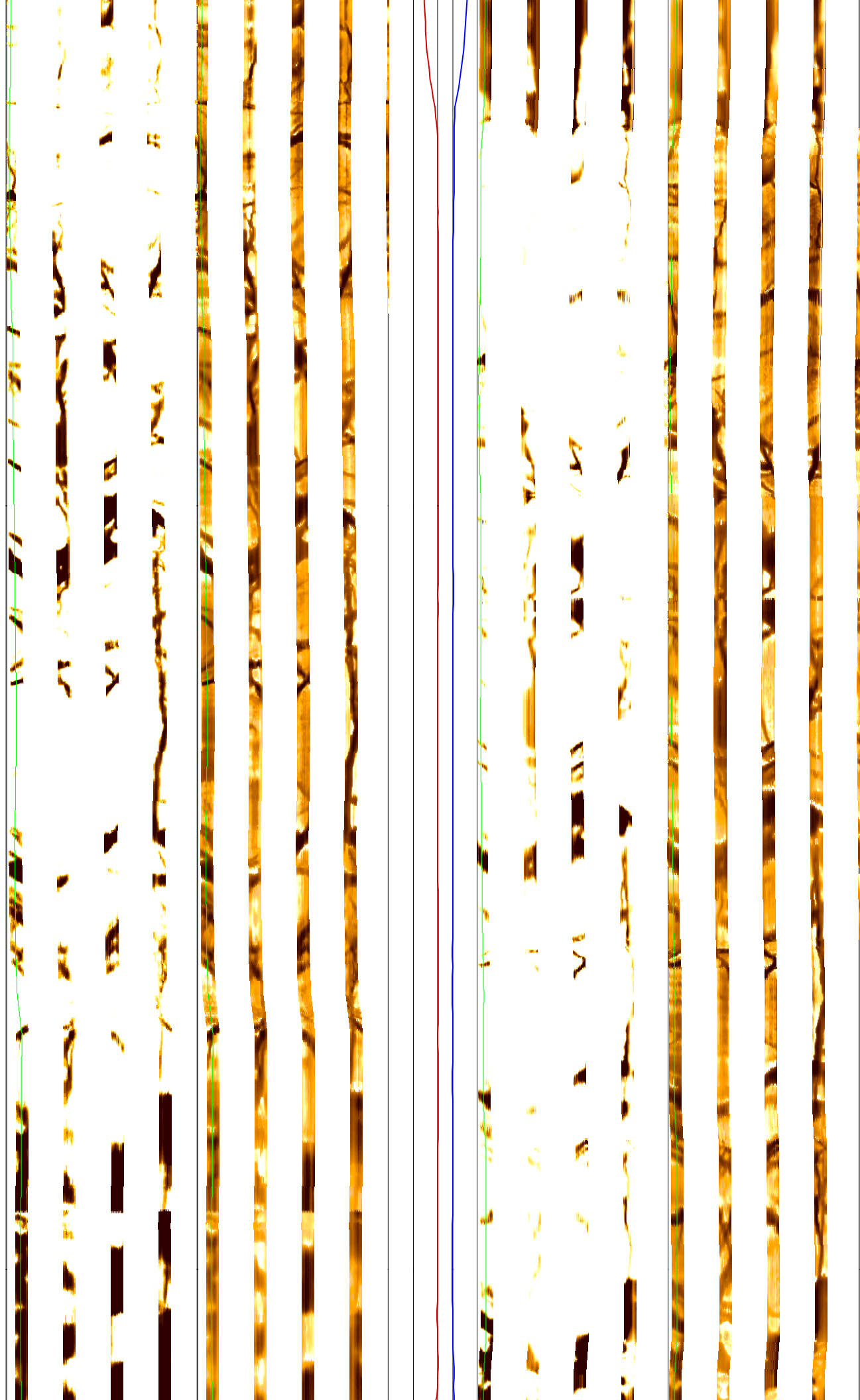
1718

1719

1720

1721

1722



1723

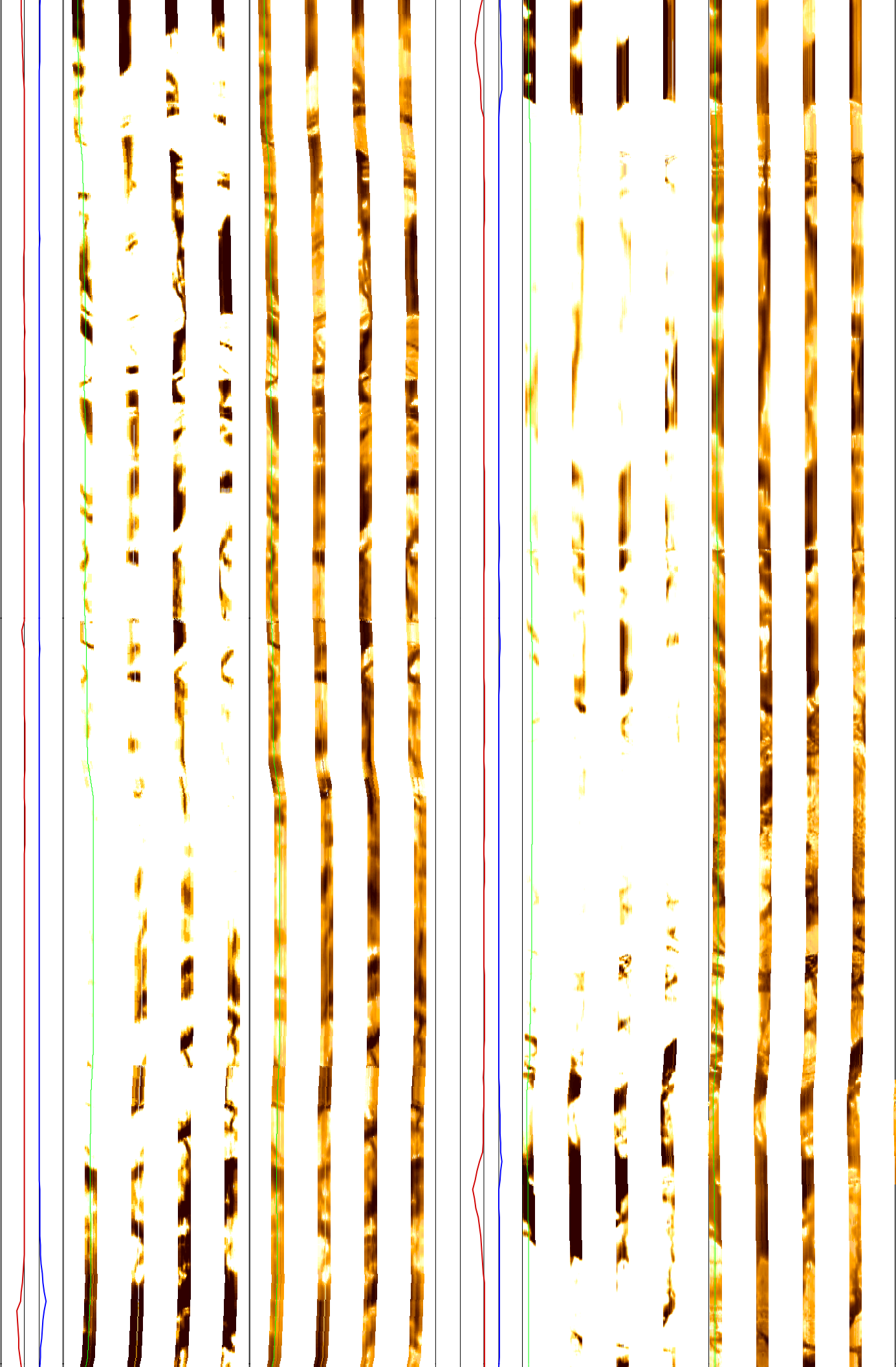
1724

1725

1726

1727

1728



1729

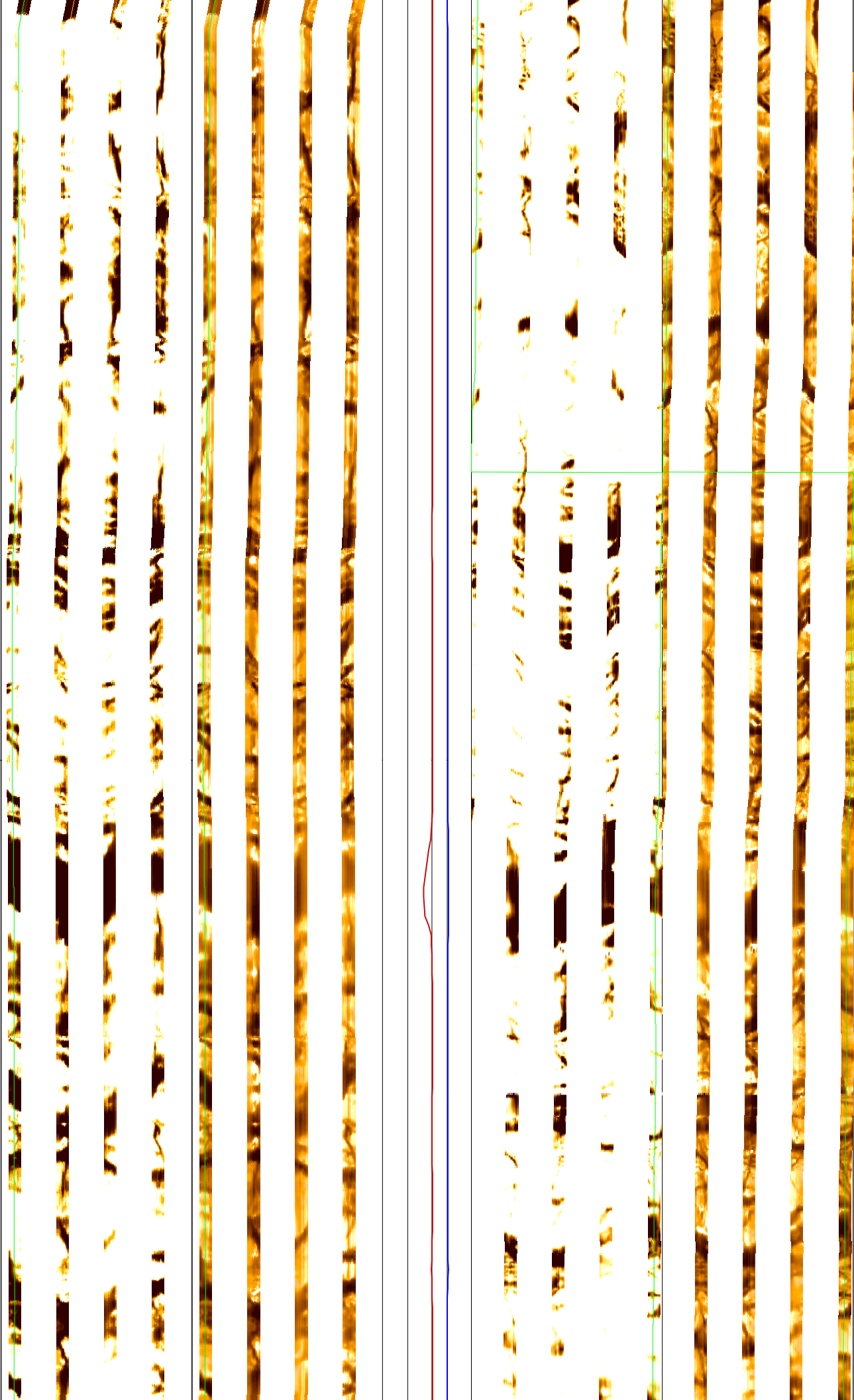
1730

1731

1732

1733

1734



1734

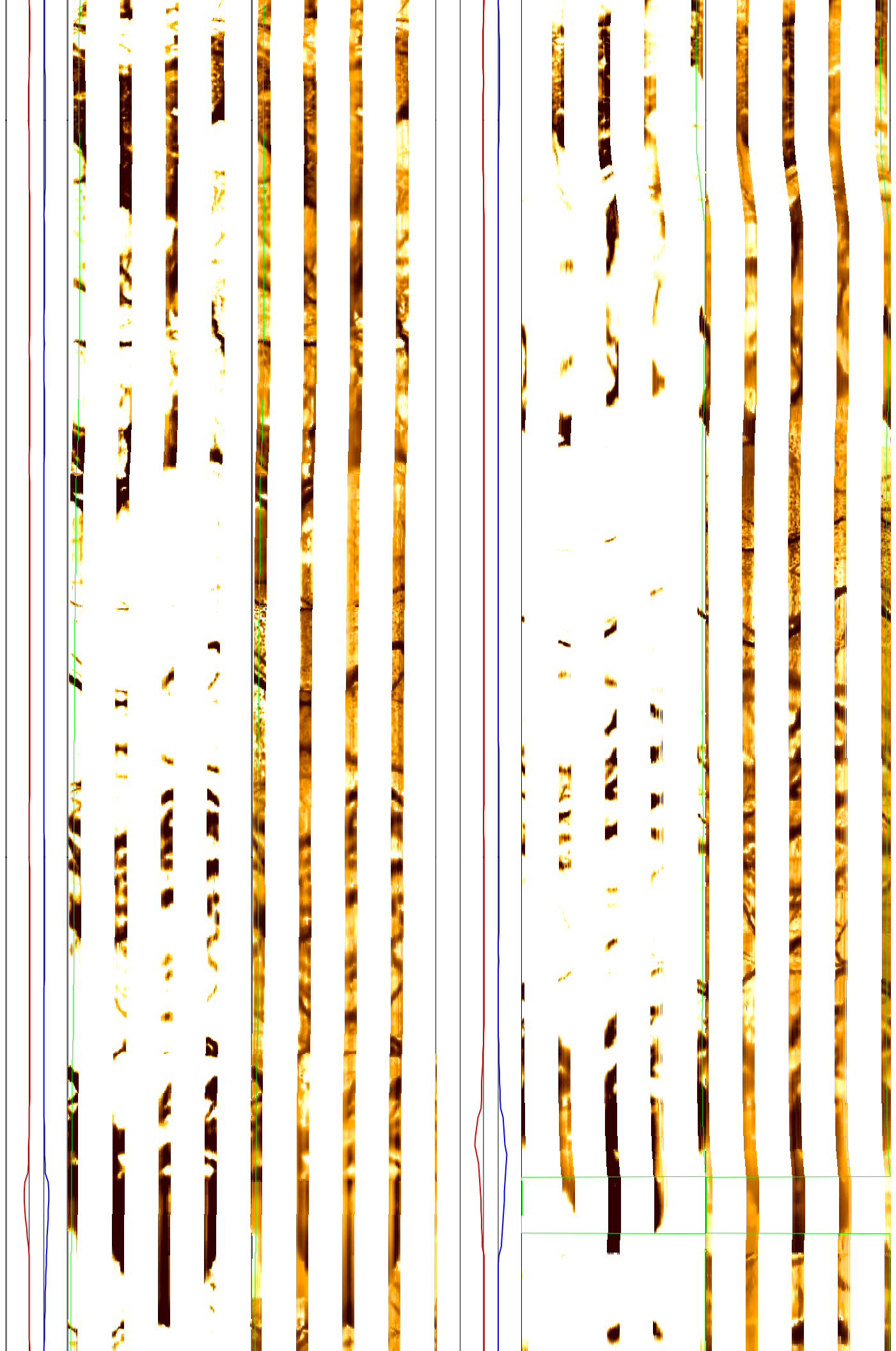
1735

1736

1737

1738

1739





1740

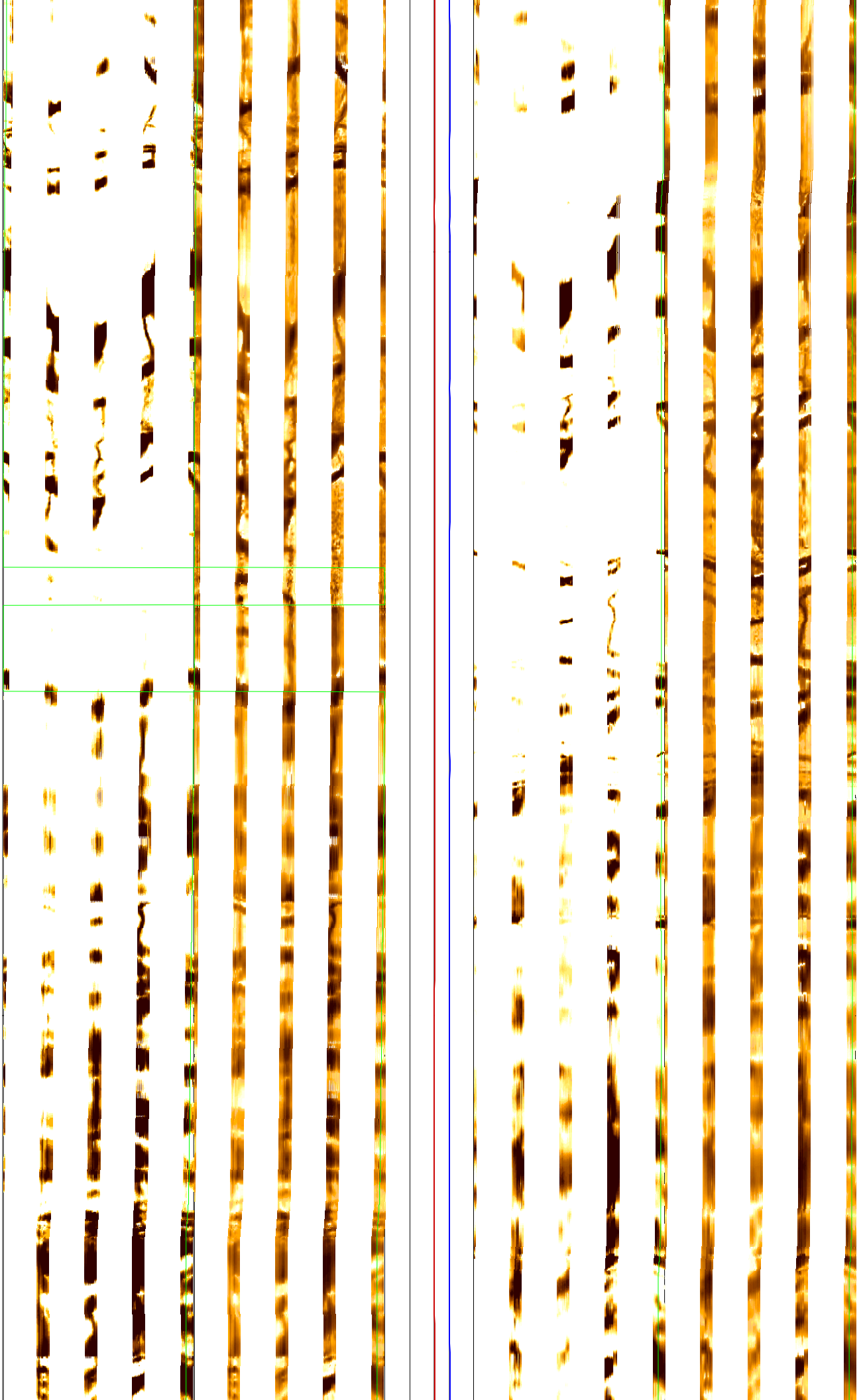
1741

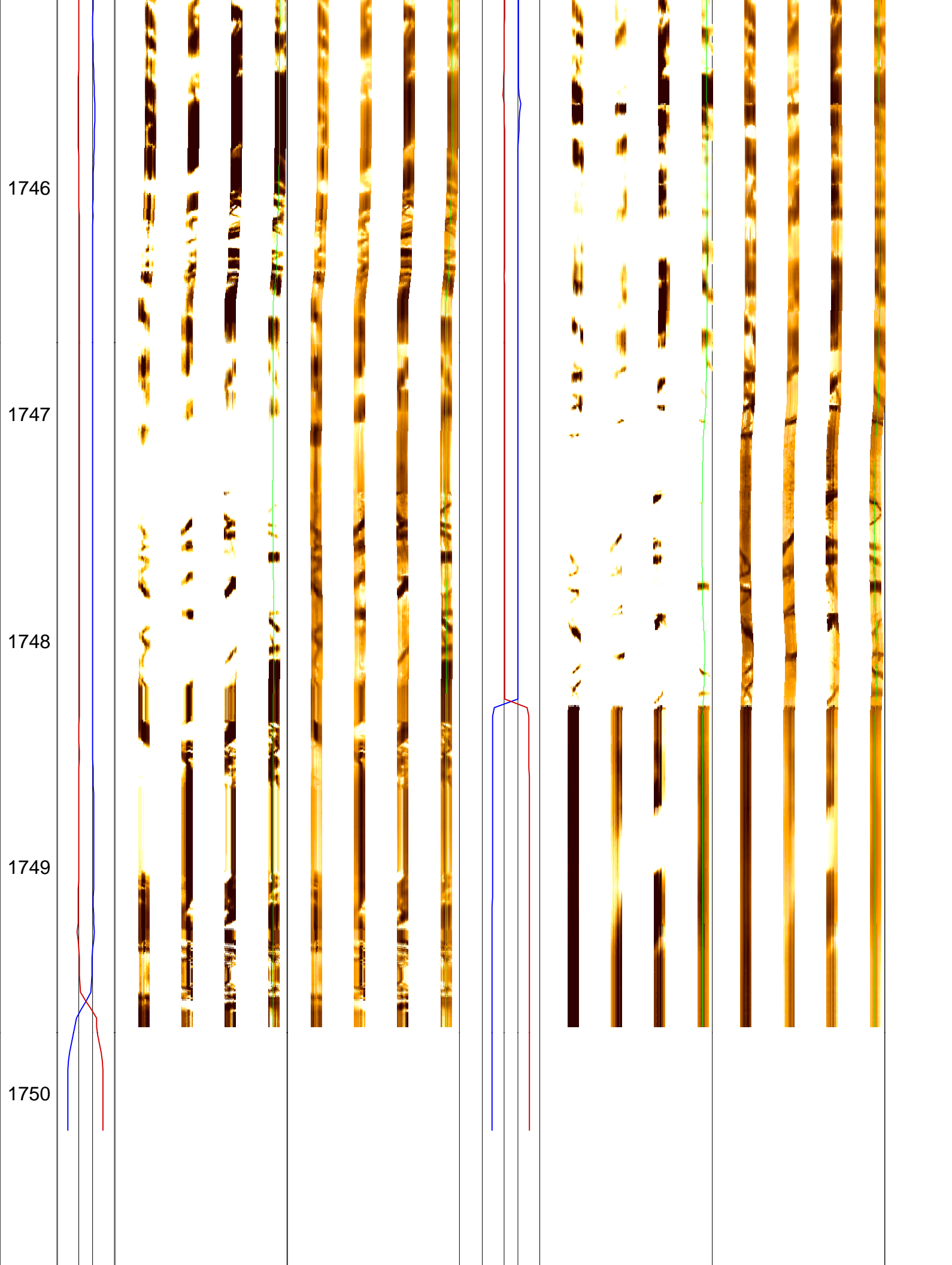
1742

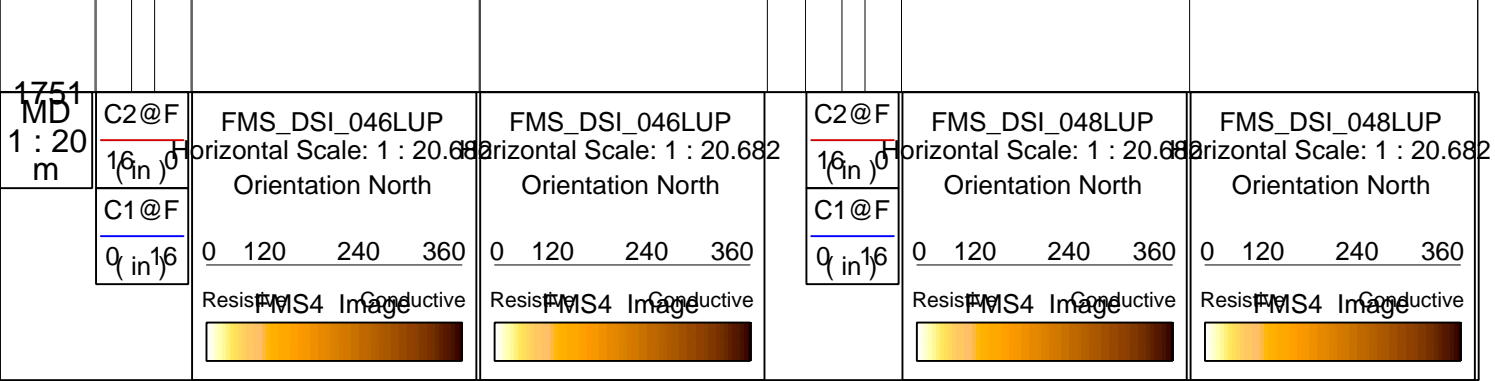
1743

1744

1745







**Calibration and Check Summary**

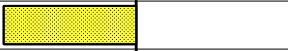


Measurement	Nominal	Master	Before	After	Change	Limit	Units
<b>Micro Electrical Scanner - B (Slim) Wellsite Calibration - Caliper Calibration</b>							
Before: 27-Nov-2004 15:55							
Caliper 1 Zero Measurement	8.000	N/A	8.626	N/A	N/A	N/A	IN
Caliper 2 Zero Measurement	8.000	N/A	8.555	N/A	N/A	N/A	IN
Caliper 1 Plus Measurement	12.00	N/A	12.56	N/A	N/A	N/A	IN
Caliper 2 Plus Measurement	12.00	N/A	12.63	N/A	N/A	N/A	IN
<b>Micro Electrical Scanner - B (Slim) Wellsite Calibration - CROUZET ACCELEROMETER PROM HAS BEEN READ CORRECTLY</b>							
Before: 27-Nov-2004 15:03							
TEMPERATURE REFERENCE :	N/A	N/A	20	N/A	N/A	N/A	DEGC
YEAR OF CALIBRATION :	N/A	N/A	92	N/A	N/A	N/A	
MONTH OF CALIBRATION :	N/A	N/A	10	N/A	N/A	N/A	
SERIAL NUMBER :	N/A	N/A	448	N/A	N/A	N/A	
<b>Micro Electrical Scanner - B (Slim) Wellsite Calibration - CROUZET MAGNETOMETER PROM HAS BEEN READ CORRECTLY</b>							
Before: 27-Nov-2004 15:03							
TEMPERATURE REFERENCE :	N/A	N/A	19	N/A	N/A	N/A	DEGC
YEAR OF CALIBRATION :	N/A	N/A	99	N/A	N/A	N/A	
MONTH OF CALIBRATION :	N/A	N/A	12	N/A	N/A	N/A	
SERIAL NUMBER :	N/A	N/A	428	N/A	N/A	N/A	
<b>Scintillation Gamma-Ray - N Wellsite Calibration - Detector Calibration</b>							
Before: 22-Nov-2004 17:35							
Gamma Ray (Jig - Bkg)	151.3	N/A	151.3	N/A	N/A	13.75	GAPI
Gamma Ray (Calibrated)	165.0	N/A	165.0	N/A	N/A	15.00	GAPI

**Micro Electrical Scanner - B (Slim) / Equipment Identification**

<b>Primary Equipment:</b>		
MEST Sonde - B	MEDS - B	724
MEST Preamplifier Cartridge - AB	MEPC - AB	
GPIT Cartridge - A	GPIC - A	719
MEST Acquisition Cartridge - A	MEAC - A	
<b>Auxiliary Equipment:</b>		
MEST-B Preamplifier Cartridge Housing	MEPH - A	769
MEST Acquisition Cartridge Housing (Slim)	MEAH - B	769

**Scintillation Gamma-Ray - N / Equipment Identification**

<b>Primary Equipment:</b>		
Scintillation Gamma Cartridge	SGC - TB	9582
Scintillation Gamma Detector	SGD - TAA	
<b>Auxiliary Equipment:</b>		
Scintillation Gamma Housing	SGH - K	2448
Gamma Source Radioactive	GSR - U/Y	

Phase	Gamma Ray Background GAPI	Value	Phase	Gamma Ray (Jig - Bkg) GAPI	Value	Phase	Gamma Ray (Calibrated) GAPI	Value	
Before		4.742	Before		151.3	Before		165.0	
	0 (Minimum)	30.00 (Nominal)	120.0 (Maximum)	137.5 (Minimum)	151.3 (Nominal)	165.0 (Maximum)	150.0 (Minimum)	165.0 (Nominal)	180.0 (Maximum)
Before: 22-Nov-2004 17:35									

Company: Lamont Doherty



Well: IODP EXP 304 Site 1309B

Field: Atlantis Massif

Country: Mid Atlantic Ridge

Ocean: Atlantic Ocean

Formation Micro-Scanner