

Schlumberger

Company: Lamont Doherty Earth Observatory

Well: 1305 C

Field:

Rig: Joides Resolution Expedition: 303

Hostile Gamma Ray

Rig: Joides Resolution Field: N 57 28.5068 Location: N 57 28.5068 Well: 1305 C Company: Lamont Doherty Earth Observatory	
LOCATION Permanent Datum: _____ Log Measured From: _____ Drilling Measured From: _____ API Serial No. _____	N 57 28.5068 W 48 31.783
	Elev.: K.B. 11 m G.L. -3469.7 m D.F. 10 m
	Mean Sea Level _____ Drill Floor _____ Elev.: 0 m 11.0 m above Perm. Datum Drill Floor _____
	Max. Hole Devi. _____ Longitude _____ Latitude _____

Logging Date	21-Oct-2004
Run Number	One
Depth Driller	3756.8 m
Schlumberger Depth	3729 m
Bottom Log Interval	3723 m
Top Log Interval	3471 m
Casing Driller Size @ Depth	0.000 in @ 3565.5 m
Casing Schlumberger	3565.5 m
Bit Size	11.438 in
Type Fluid In Hole	Sepiolite
Density	1.1 g/cm ³
Fluid Loss	0 cm ³
Source Of Sample	
RM @ Measured Temperature	0.322 ohm.m @ 5 degC
RMF @ Measured Temperature	@
RMC @ Measured Temperature	@
Source RMF	RMC
RM @ MRT	RMF @ MRT @
Maximum Recorded Temperatures	
Circulation Stopped	Time
Logger On Bottom	21-Oct-2004
Unit Number	2022
Recorded By	Javier Espinosa
Witnessed By	Stuart Robinson

Logging Date		Run 1	Run 2	Run
Run Number				
Depth Driller				
Schlumberger Depth				
Bottom Log Interval				
Top Log Interval				
Casing Driller Size @ Depth	@			
Casing Schlumberger				
Bit Size				
Type Fluid In Hole				
Density				
Fluid Loss				
Source Of Sample				
RM @ Measured Temperature	@			
RMF @ Measured Temperature	@			
RMC @ Measured Temperature	@			
Source RMF	RMC			
RM @ MRT	RMF @ MRT @			
Maximum Recorded Temperatures				
Circulation Stopped	Time			
Logger On Bottom	Time			
Unit Number	Location			
Recorded By				
Witnessed By				

DISCLAIMER
 THE USE OF AND RELIANCE UPON THIS RECORDED-DATA BY THE HEREIN NAMED COMPANY (AND ANY OF ITS AFFILIATES, PARTNERS, REPRESENTATIVES, AGENTS, CONSULTANTS AND EMPLOYEES) IS SUBJECT TO THE TERMS AND CONDITIONS AGREED UPON BETWEEN SCHLUMBERGER AND THE COMPANY, INCLUDING: (a) RESTRICTIONS ON USE OF THE RECORDED-DATA; (b) DISCLAIMERS AND WAIVERS OF WARRANTIES AND REPRESENTATIONS REGARDING COMPANY'S USE OF AND RELIANCE UPON THE RECORDED-DATA; AND (c) CUSTOMER'S FULL AND SOLE RESPONSIBILITY FOR ANY INFERENCE DRAWN OR DECISION MADE IN CONNECTION WITH THE USE OF THIS RECORDED-DATA.

OTHER SERVICES1
 OS1: HLDS
 OS2: APS
 OS3: DITE
 OS4:
 OS5:

OTHER SERVICES2
 OS1:
 OS2:
 OS3:
 OS4:
 OS5:

REMARKS: RUN NUMBER 1
 Parameters and presentations as per IODP standards
 Tool ran as per tool scketch below.
 TD not reached due to hole conditions.
 Repeat pass incomplete due to cable stuck in drill pipe.

REMARKS: RUN NUMBER 2

RUN 1
 SERVICE ORDER #:
 PROGRAM VERSION: 12C0-301
 FLUID LEVEL:

RUN 2
 SERVICE ORDER #:
 PROGRAM VERSION:
 FLUID LEVEL:

LOGGED INTERVAL	START	STOP




LOGGED INTERVAL	START	STOP

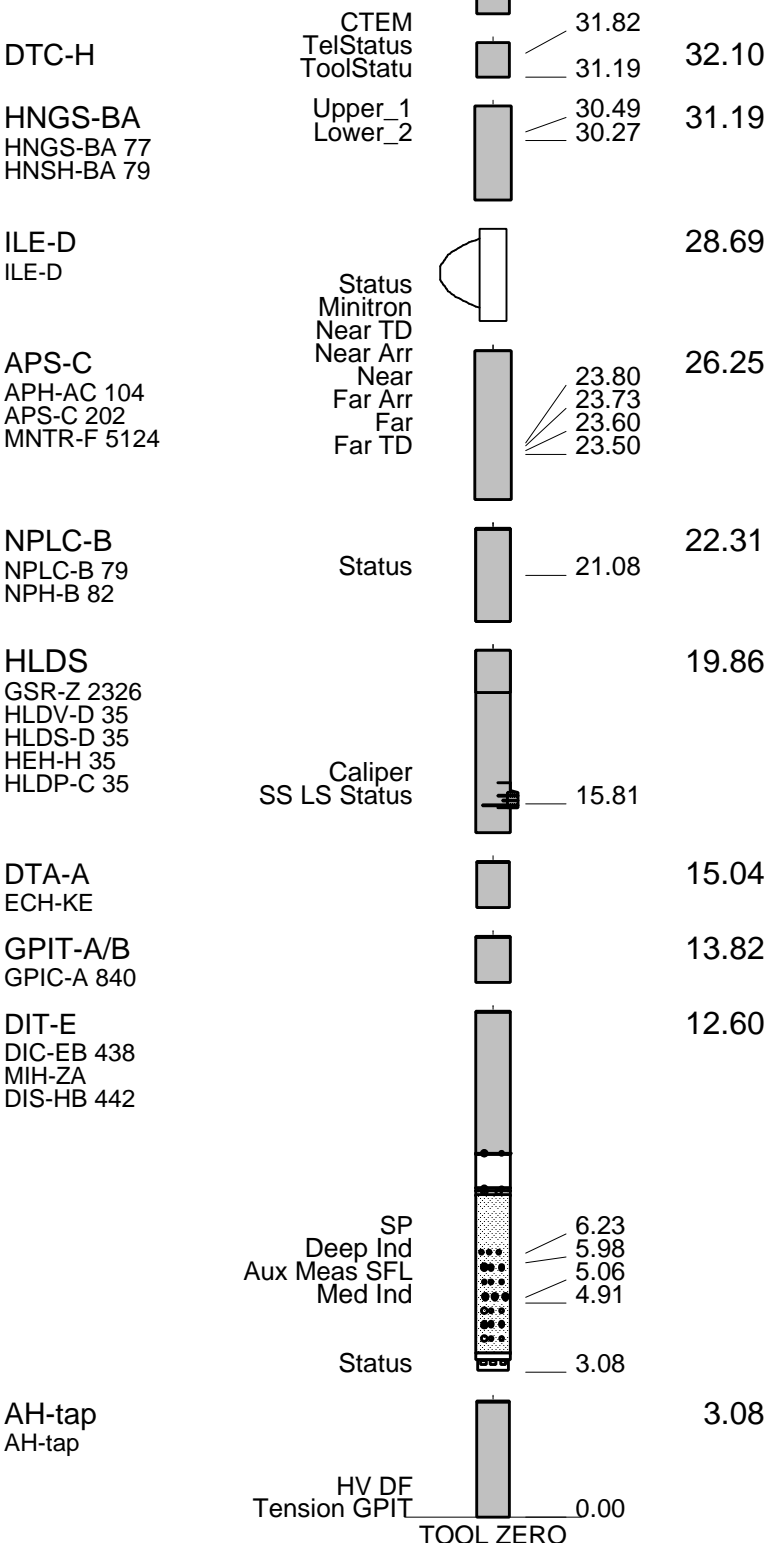
EQUIPMENT DESCRIPTION

RUN 1
SURFACE EQUIPMENT
 SFT-281 6250
 SFT-178 6250
 GSR-U 135
 WITM (DTS)-A

RUN 2

DOWNHOLE EQUIPMENT

LEH-QT  38.60
 AH-mgt  37.72
 AH-mgt 



TOOL ZERO

MAXIMUM STRING DIAMETER 3.88 IN
 MEASUREMENTS RELATIVE TO TOOL ZERO
 ALL LENGTHS IN METERS

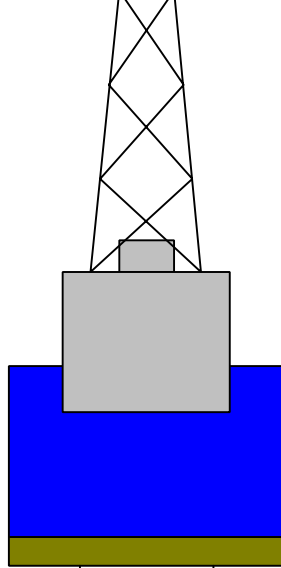
Production String	(in)	(m)	Well Schematic	(m)	(in)	Casing String
	OD	ID		MD	MD	

Kelly Bushing Elevation
Derrick Floor Elevation

11.0
11.0

Mean Sea Level

0.0



0.0 5.500

Casing String

3565.5 5.500
3565.5 11.438

Casing Shoe
Borehole Segment

Schlumberger

MAIN PASS

MAXIS Field Log

Company: Lamont Doherty Earth Observatory

Well: 1305 C

Input DLIS Files

DEFAULT	PI_LDL_APS_NGS_039PUP	FN:60	PRODUCER	23-Oct-2004 12:26	3735.6 M	3424.6 M
---------	-----------------------	-------	----------	-------------------	----------	----------

Output DLIS Files

DEFAULT	PI_LDL_APS_NGS_042PUP	FN:67	PRODUCER	23-Oct-2004 12:30	3735.6 M	3429.3 M
ACCELERATION	PI_LDL_APS_NGS_042PUP	FN:68	PRODUCER	23-Oct-2004 12:30	3735.6 M	3429.3 M
REDUCED	PI_LDL_APS_NGS_042PUP	FN:69	PRODUCER	23-Oct-2004 12:30	3735.6 M	3429.3 M

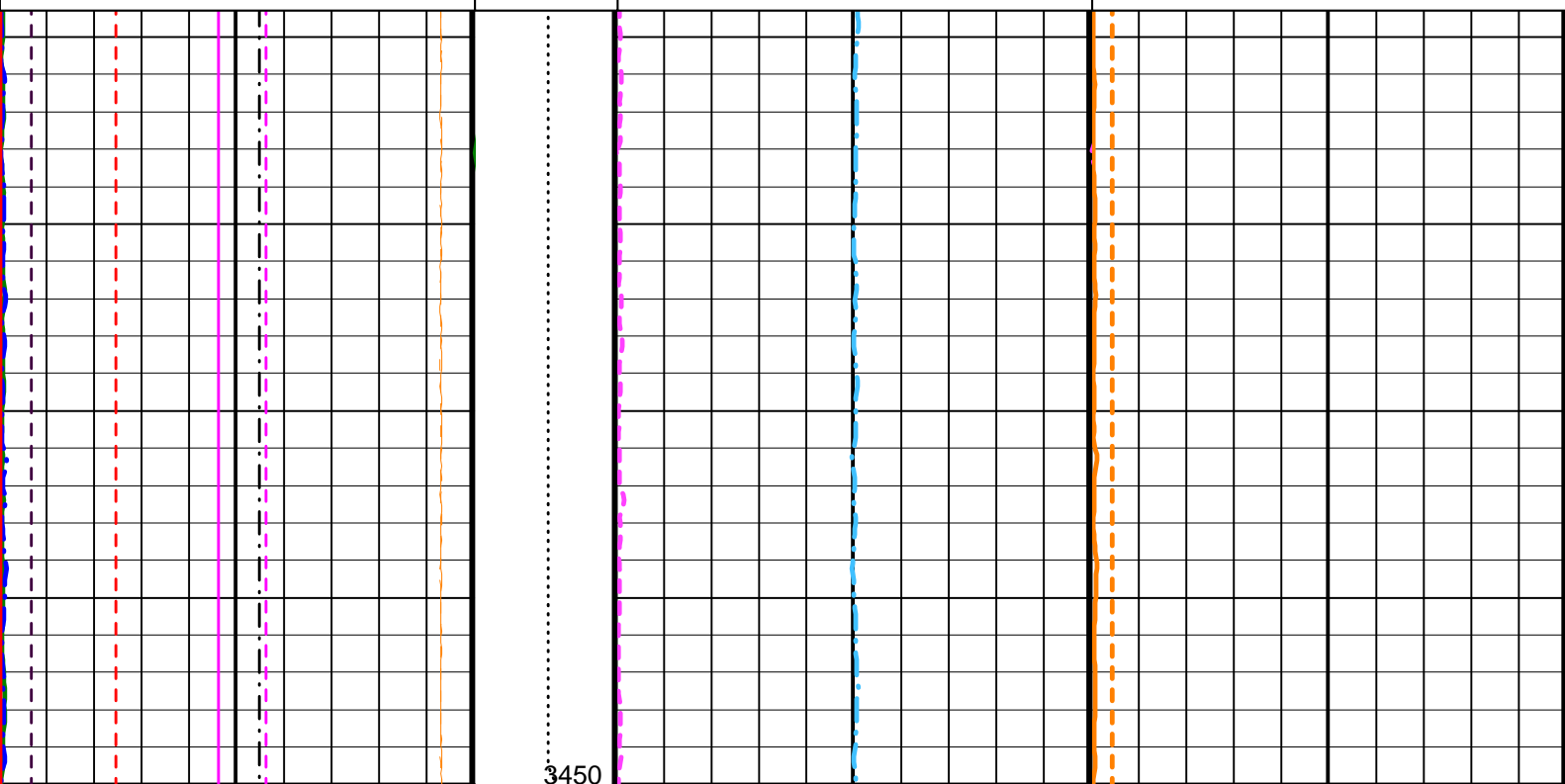
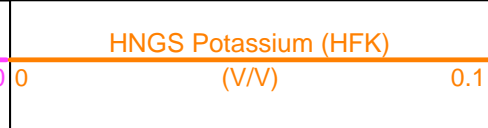
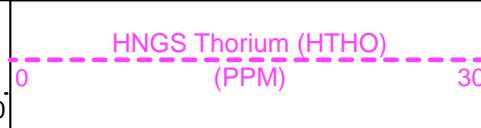
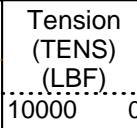
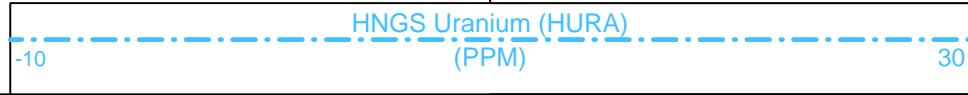
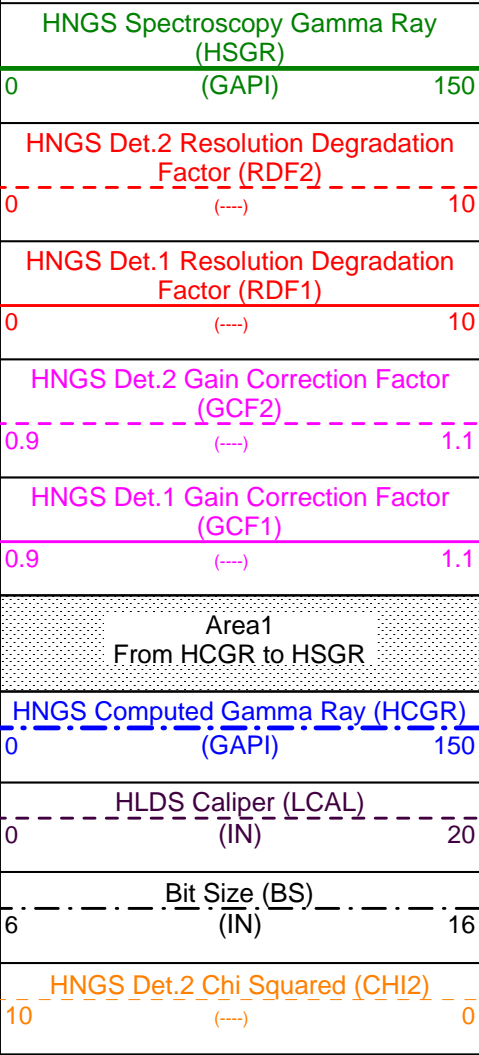
OP System Version: 12C0-301

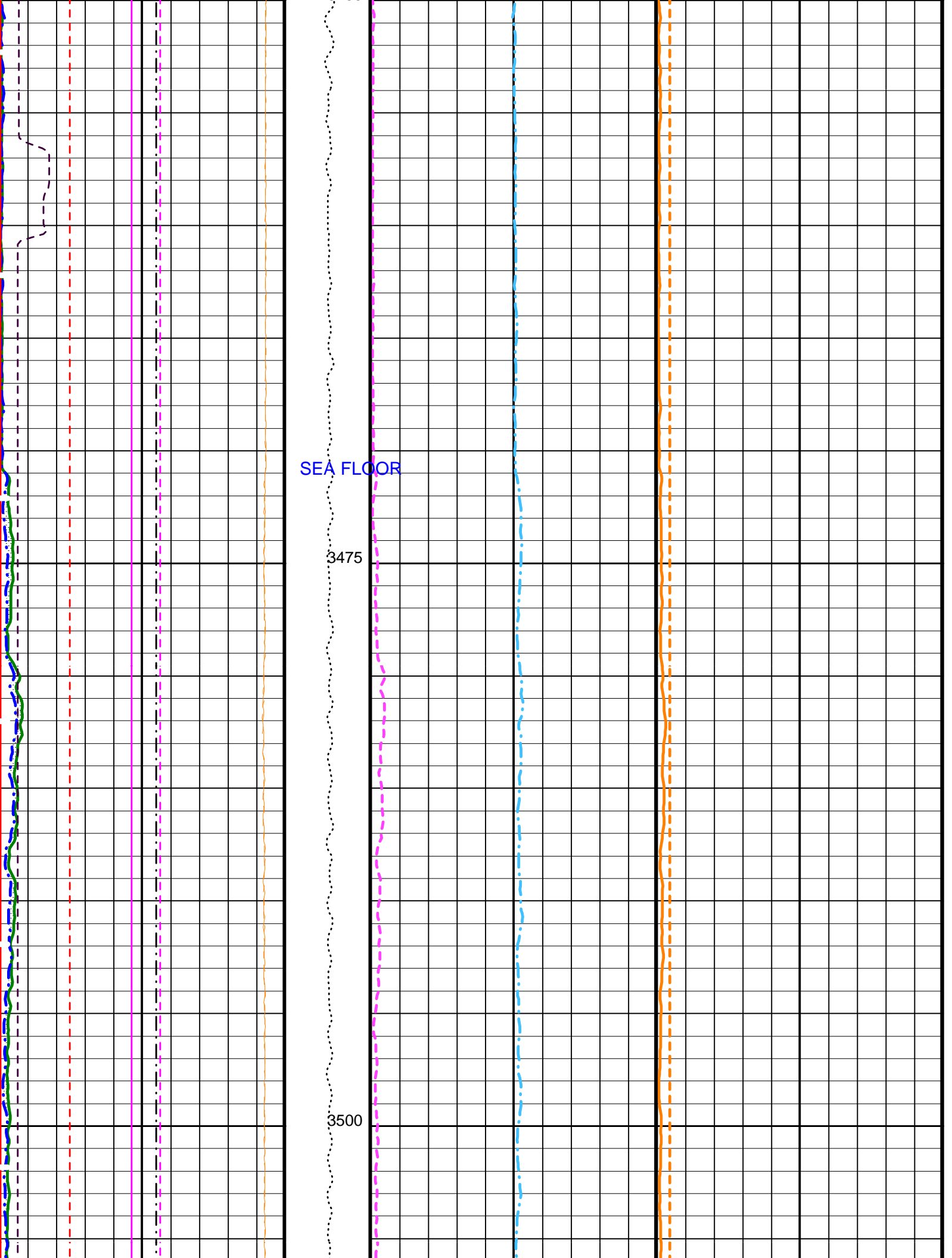
MCM

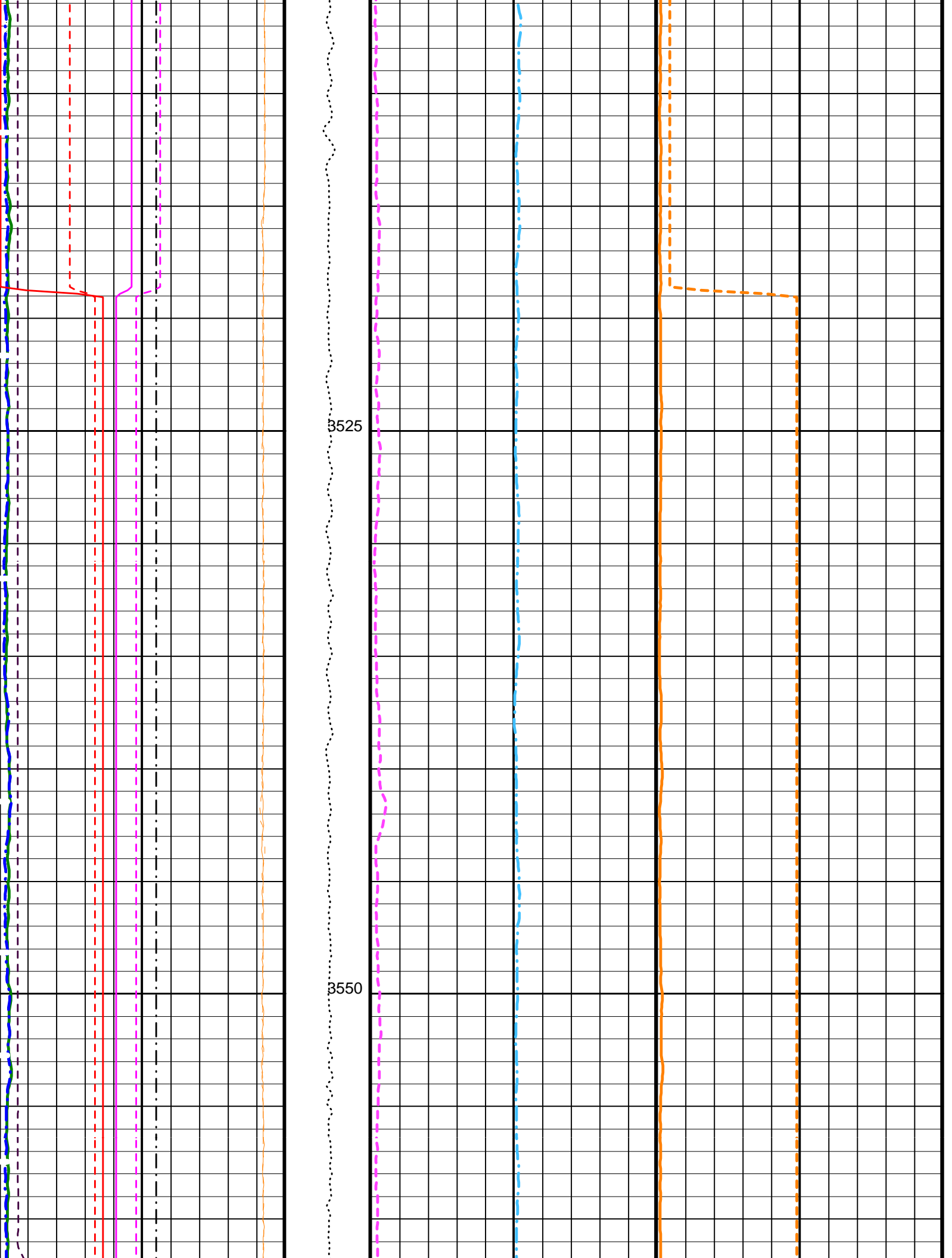
DIT-E	12C0-301	GPIT-A/B	12C0-301
DTA-A	12C0-301	HLDS	12C0-301
NPL C-B	12C0-301	APS-C	12C0-301

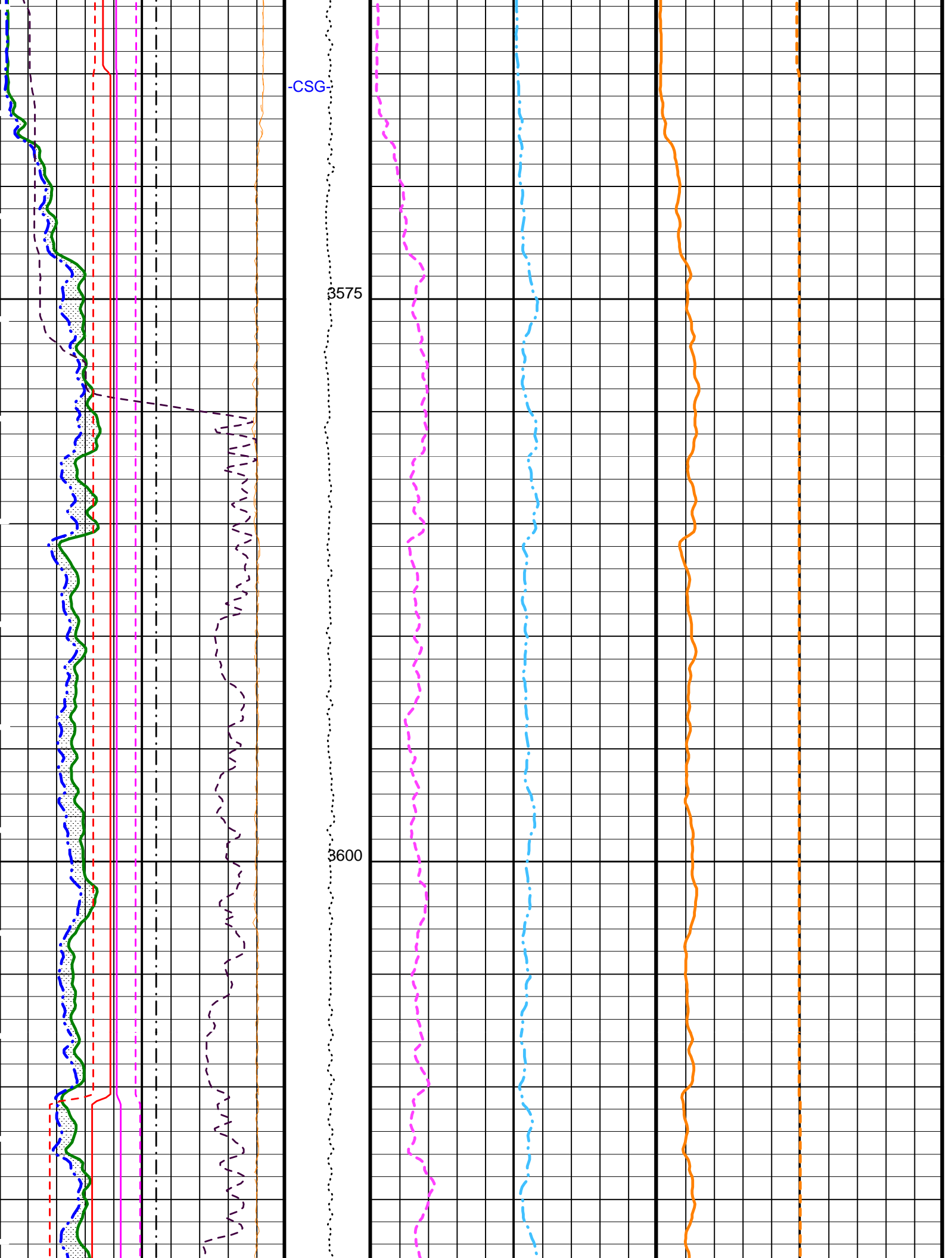
PIP SUMMARY

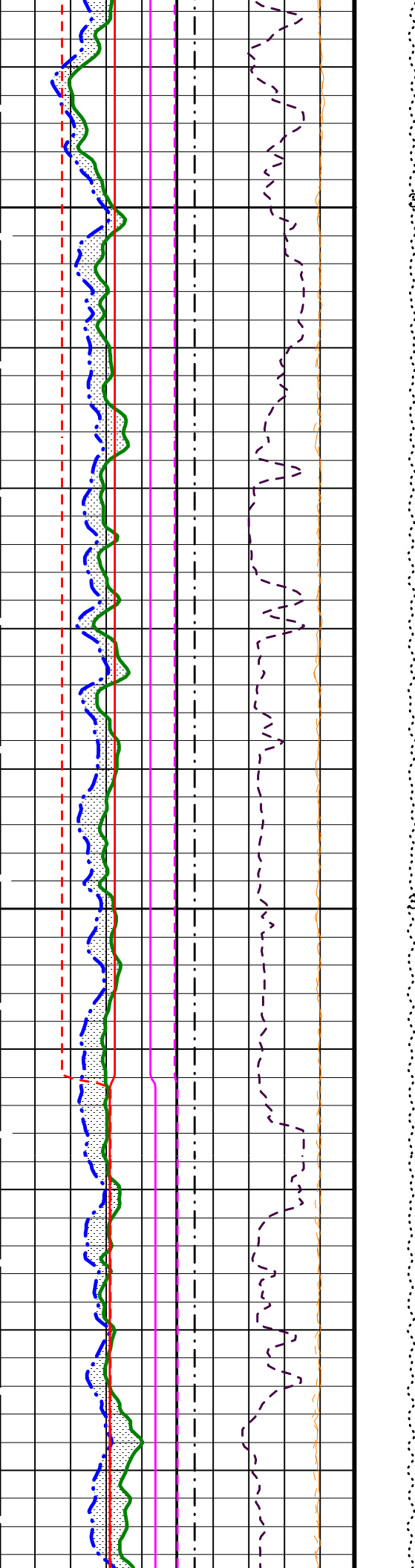
Time Mark Every 60 S





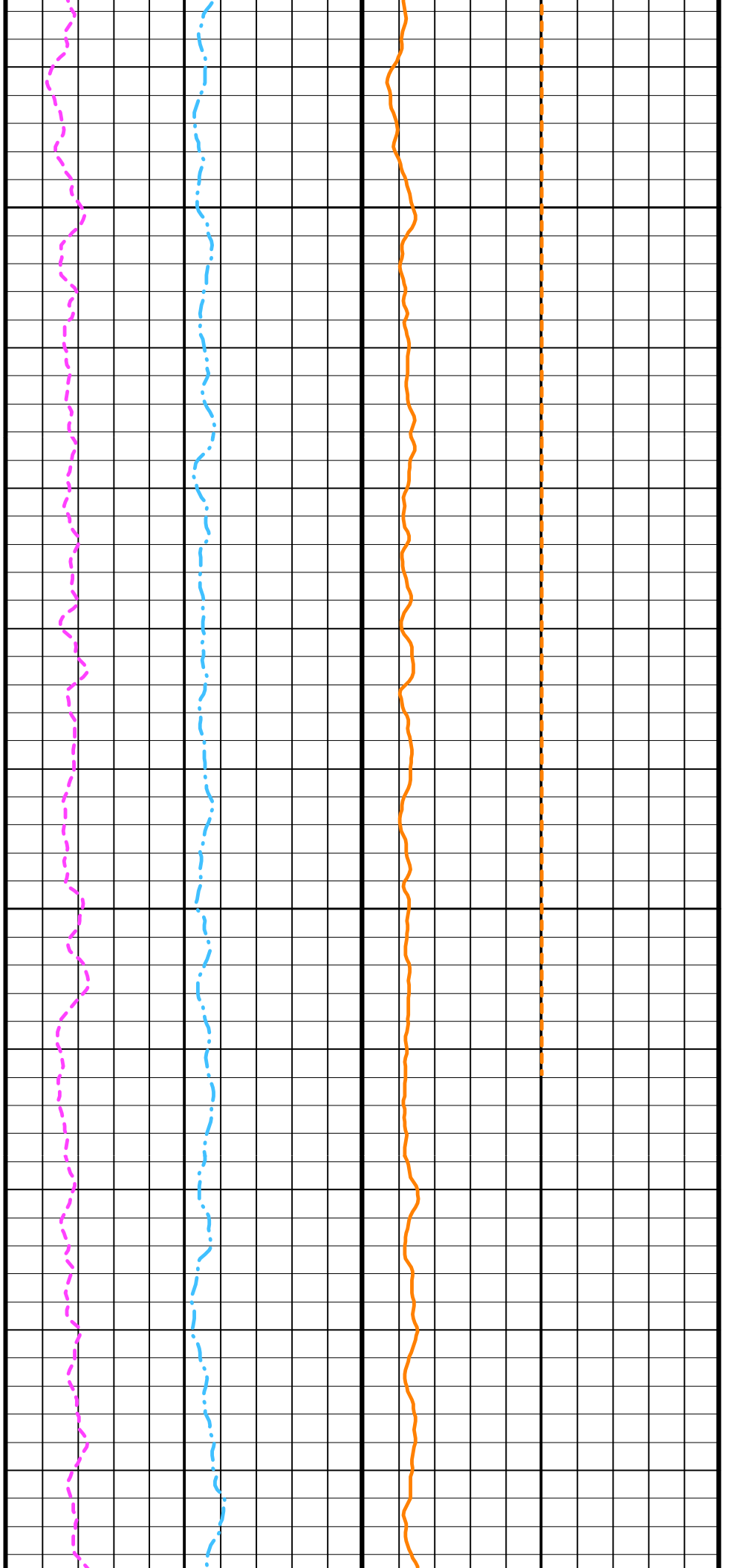


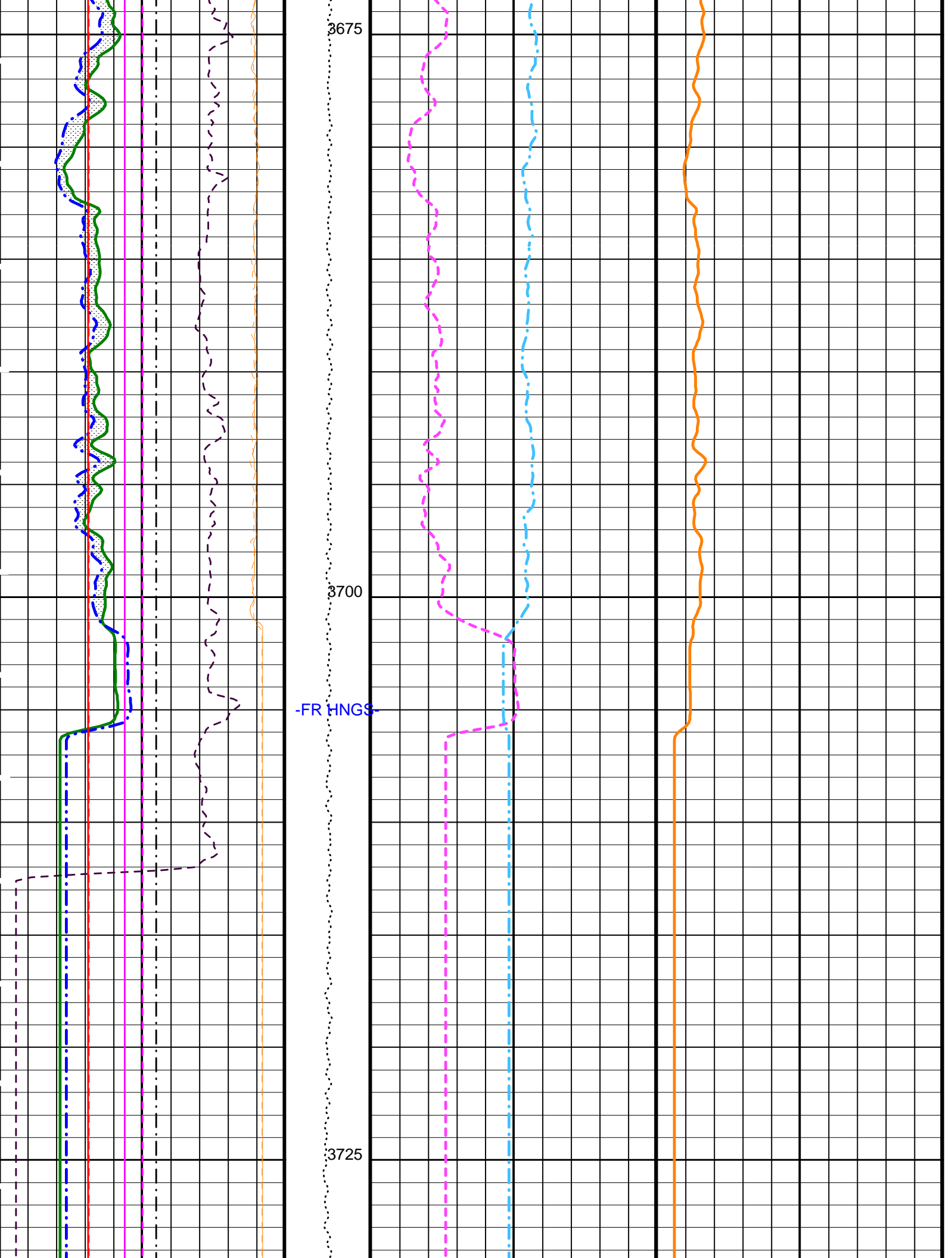


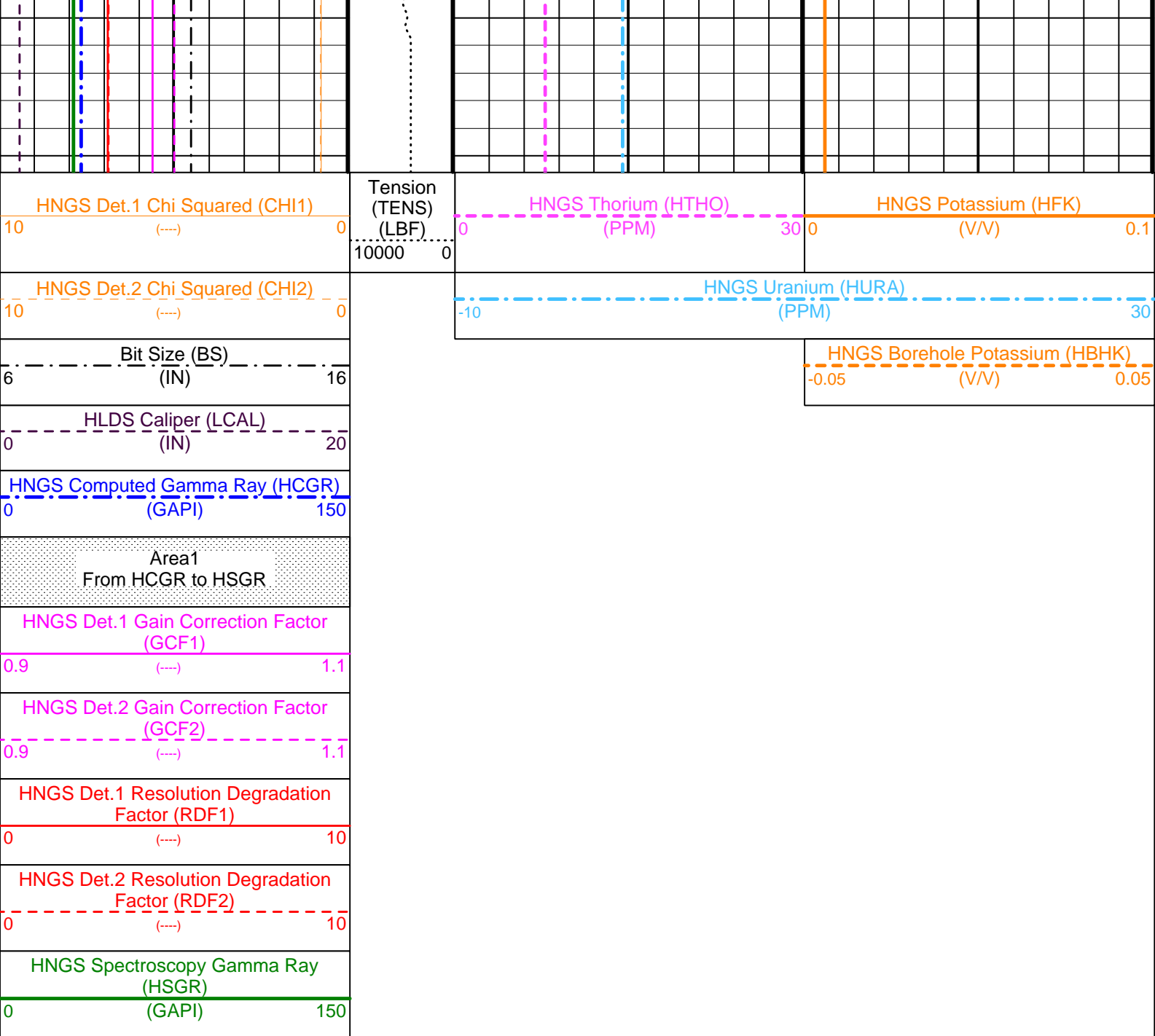


3625

3650







PIP SUMMARY

▶ Time Mark Every 60 S

Parameters

DLIS Name	Description	Value
BHS	DIT-E: Dual Induction - E Borehole Status	OPEN
GCSE	Generalized Caliper Selection	LCAL
BHS	APS-C: Accelerator-Porosity Tool Borehole Status	OPEN
GCSE	Generalized Caliper Selection	LCAL
BAR1	HNGS-BA: Hostile Natural Gamma Ray Sonde HNGS Detector 1 Barite Constant	1
BAR2	HNGS Detector 2 Barite Constant	1
BHK	HNGS Borehole Potassium Correction Concentration	0
BHS	Borehole Status	OPEN
CSD1	Inner Casing Outer Diameter	0 IN
CSD2	Outer Casing Outer Diameter	0 IN
CSW1	Inner Casing Weight	0 LB/F
CSW2	Outer Casing Weight	0 LB/F
DBCC	HNGS Barite Constant Correction Flag	NONE
GCSE	Generalized Caliper Selection	LCAL
H1P	HNGS Detector 1 Allow/Disallow In Processing	ALLOW
H2P	HNGS Detector 2 Allow/Disallow In Processing	ALLOW

HABK	HNGS Borehole Potassium Running Average	-0.00206142	
HALF	HNGS Alpha Filter Length	60	IN
HCRB	HNGS Apply Borehole Potassium Correction	NONE	
HMWM	Mud Weighting Material	NATU	
HNPE	HNGS Processing Enable	YES	
S1BI	HNGS Detector 1 Calibration Bismuth Count Rate	1.3	CPS
S2BI	HNGS Detector 2 Calibration Bismuth Count Rate	1.3	CPS
SGRC	HNGS Standard Gamma-Ray Correction Flag	YES	
TPOS	Tool Position	ECCE	
VBA1	HNGS Detector 1 Variable Barite Factor Running Average	2.19159	
VBA2	HNGS Detector 2 Variable Barite Factor Running Average	0.935656	
System and Miscellaneous			
BS	Bit Size	11.438	IN
DFD	Drilling Fluid Density	1.10	G/C3
DO	Depth Offset for Playback	0.0	M
PP	Playback Processing	NORMAL	

Format: HNGSYields Vertical Scale: 1:200 Graphics File Created: 23-Oct-2004 12:30

OP System Version: 12C0-301

MCM

DIT-E	12C0-301	GPIT-A/B	12C0-301
DTA-A	12C0-301	HLDS	12C0-301
NPLC-B	12C0-301	APS-C	12C0-301
HNGS-BA	12C0-301	DTC-H	12C0-301

Input DLIS Files

DEFAULT	PI_LDL_APS_NGS_039PUP	FN:60	PRODUCER	23-Oct-2004 12:26	3735.6 M	3424.6 M
---------	-----------------------	-------	----------	-------------------	----------	----------

Output DLIS Files

DEFAULT	PI_LDL_APS_NGS_042PUP	FN:67	PRODUCER	23-Oct-2004 12:30		
ACCELERATION	PI_LDL_APS_NGS_042PUP	FN:68	PRODUCER	23-Oct-2004 12:30		
REDUCED	PI_LDL_APS_NGS_042PUP	FN:69	PRODUCER	23-Oct-2004 12:30		

REPEAT PASS

MAXIS Field Log

Company: Lamont Doherty Earth Observatory

Well: 1305 C

Input DLIS Files

DEFAULT	PI_LDL_APS_NGS_040PUP	FN:62	PRODUCER	23-Oct-2004 12:27	3673.9 M	3575.5 M
---------	-----------------------	-------	----------	-------------------	----------	----------

Output DLIS Files

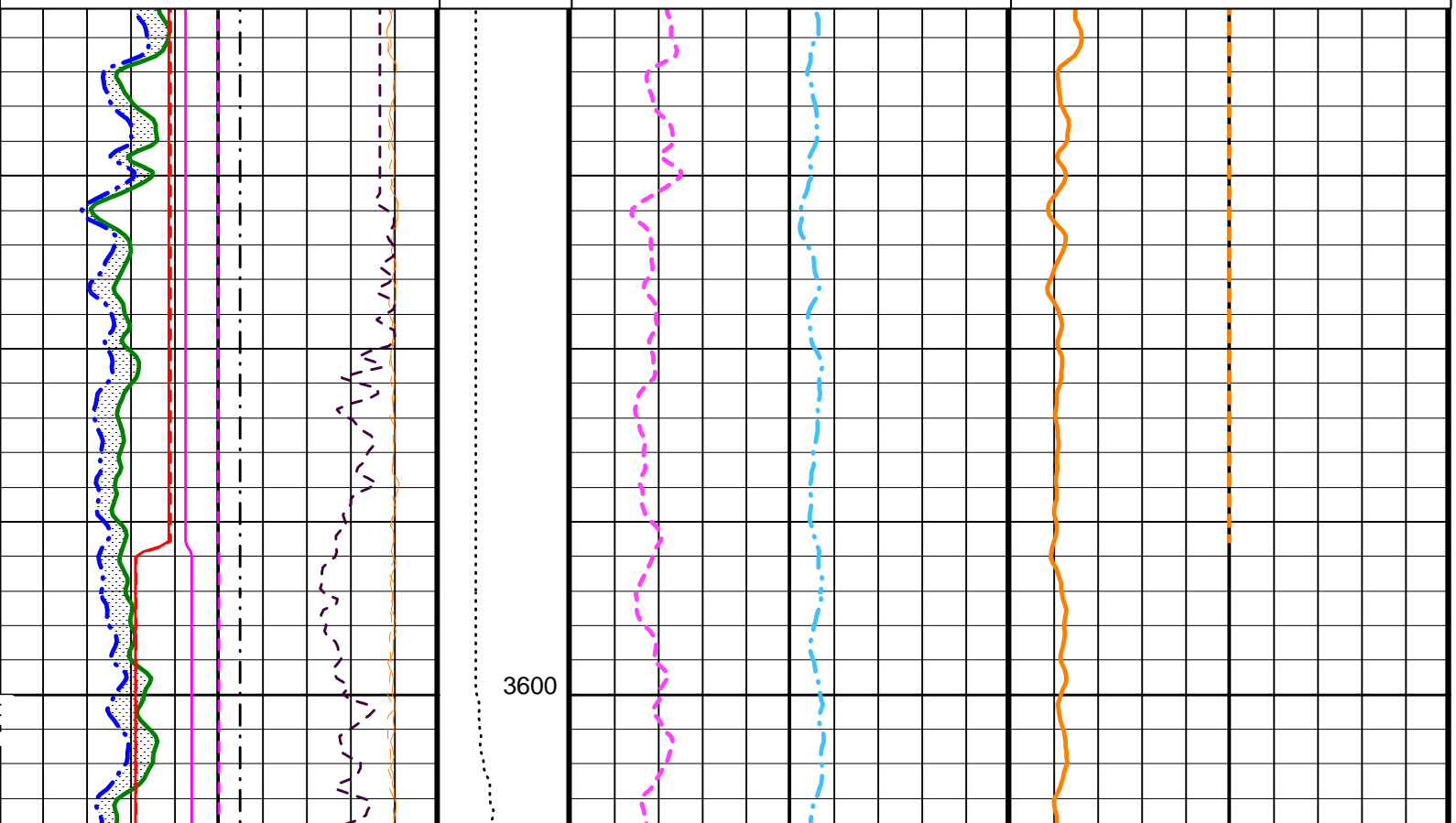
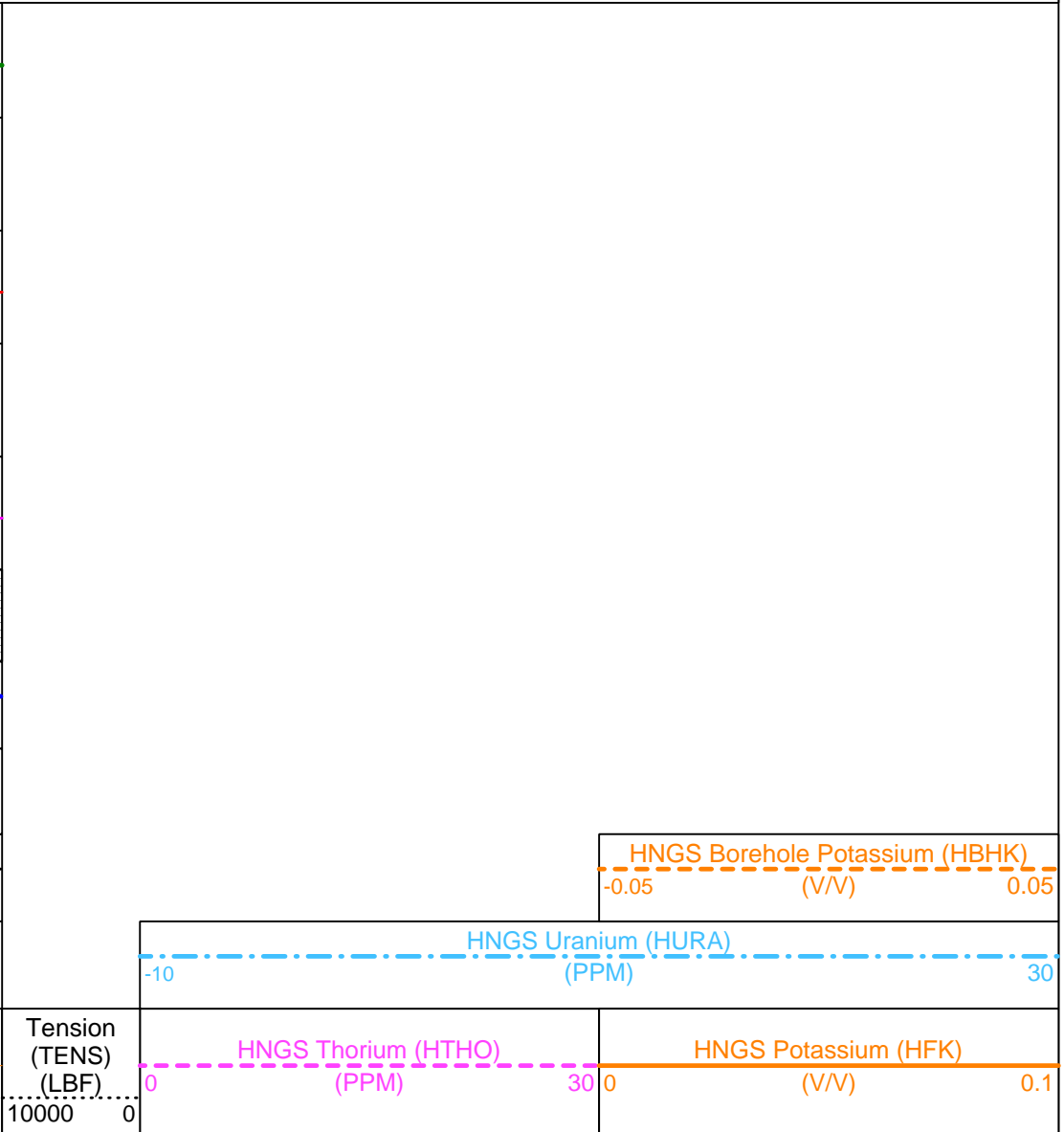
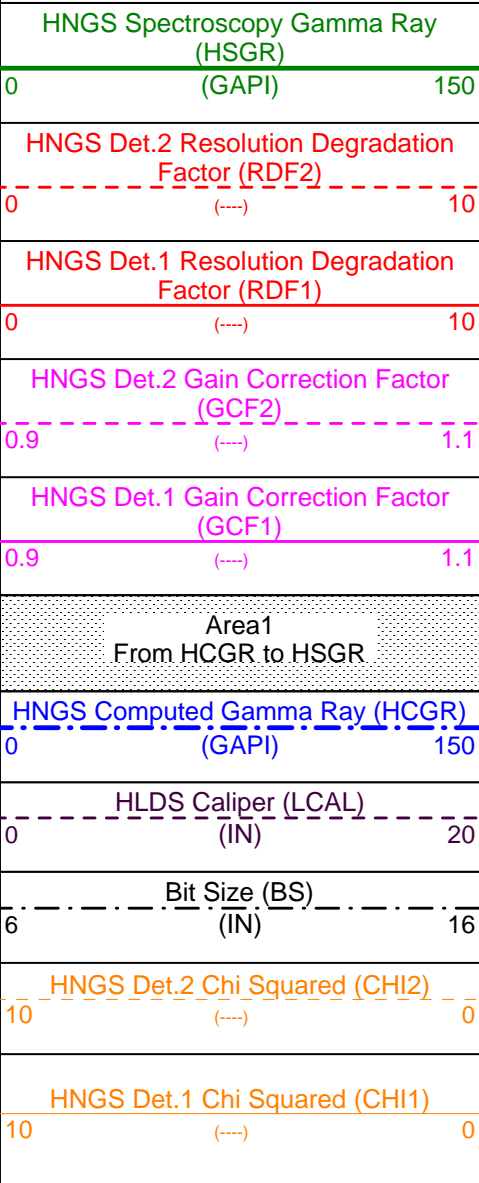
DEFAULT	PI_LDL_APS_NGS_043PUP	FN:70	PRODUCER	23-Oct-2004 12:31	3673.9 M	3580.2 M
ACCELERATION	PI_LDL_APS_NGS_043PUP	FN:71	PRODUCER	23-Oct-2004 12:31	3673.9 M	3580.2 M
REDUCED	PI_LDL_APS_NGS_043PUP	FN:72	PRODUCER	23-Oct-2004 12:31	3673.9 M	3580.2 M

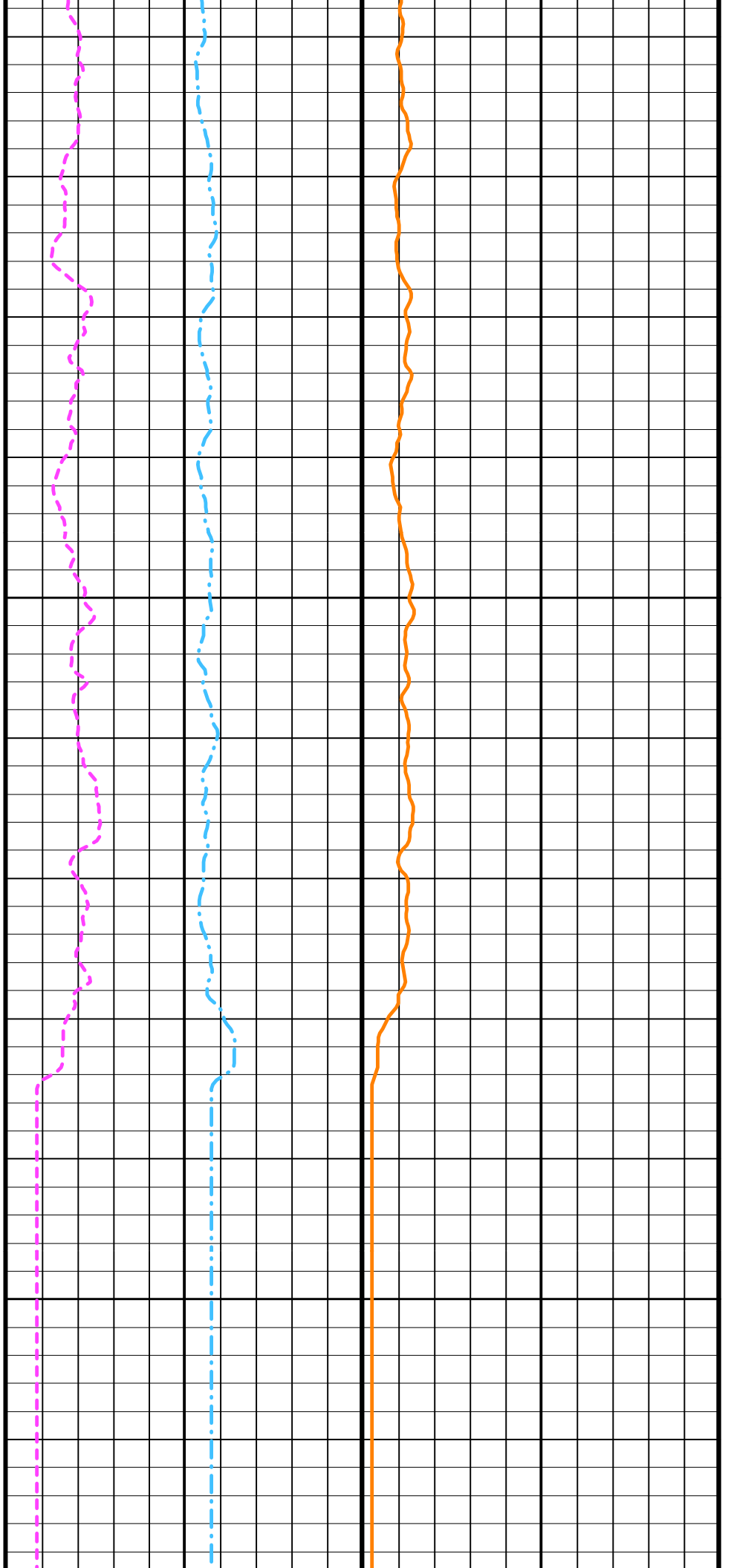
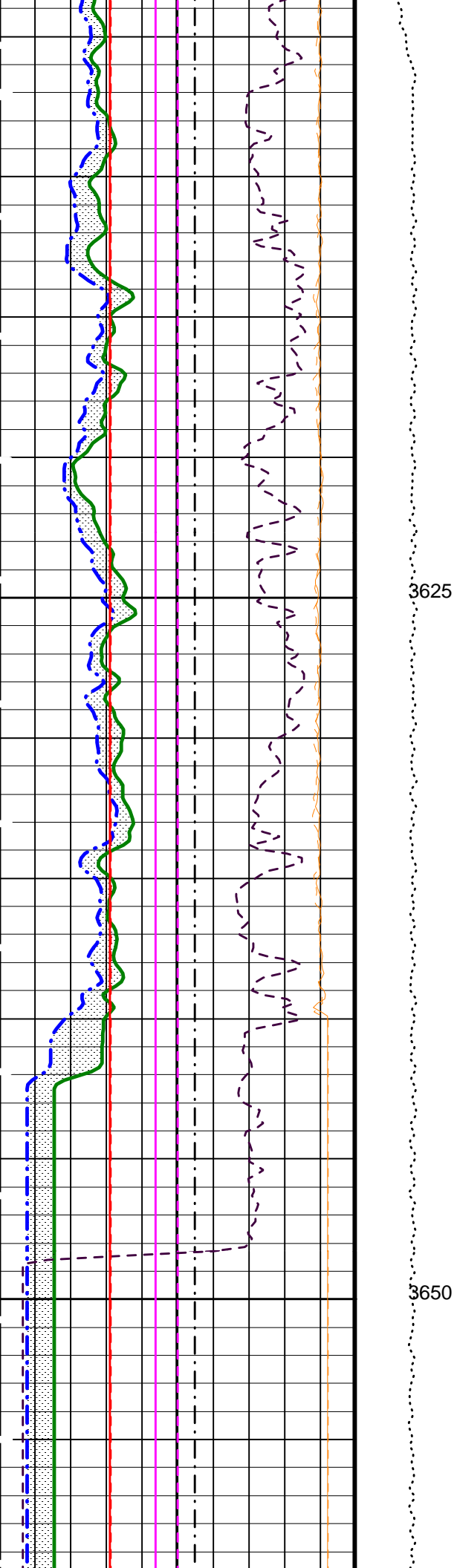
OP System Version: 12C0-301

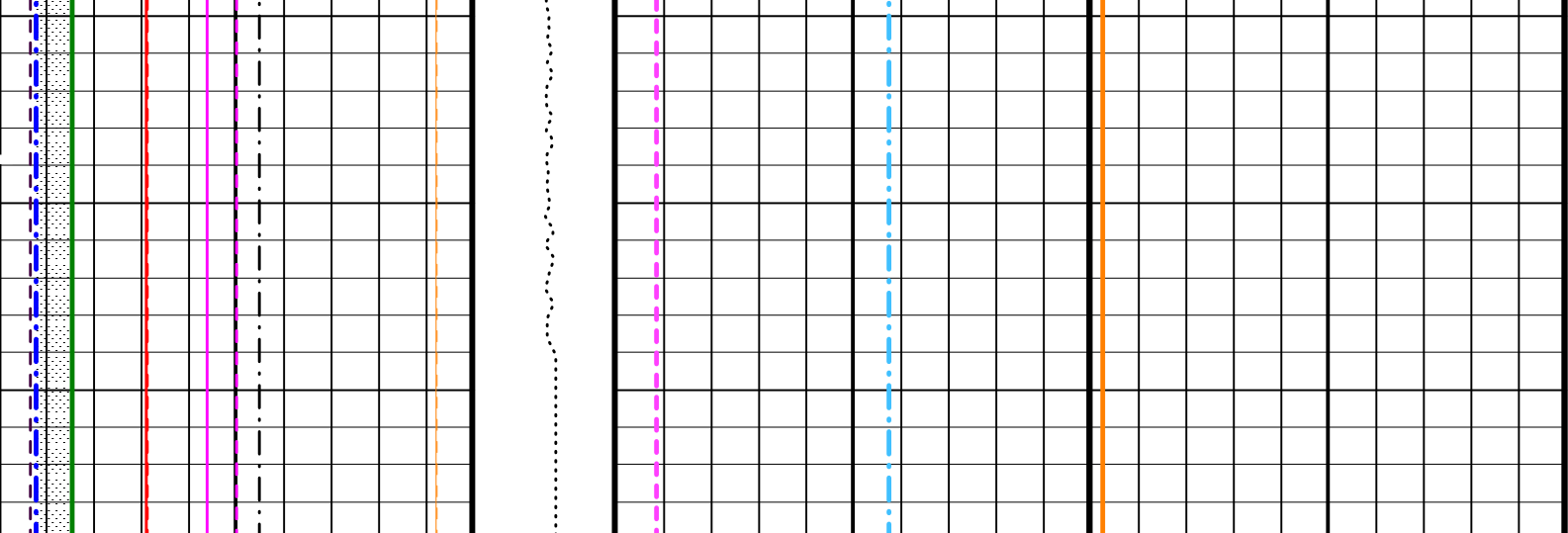
MCM

DIT-E	12C0-301	GPIT-A/B	12C0-301
DTA-A	12C0-301	HLDS	12C0-301
NPLC-B	12C0-301	APS-C	12C0-301
HNGS-BA	12C0-301	DTC-H	12C0-301

PIP SUMMARY







HNGS Det.1 Chi Squared (CHI1) 10 (----) 0	Tension (TENS) (LBF) 10000 0	HNGS Thorium (HTHO) (PPM) 0 30	HNGS Potassium (HFK) (V/V) 0 0.1
HNGS Det.2 Chi Squared (CHI2) 10 (----) 0		HNGS Uranium (HURA) (PPM) -10 30	
Bit Size (BS) (IN) 6 16			HNGS Borehole Potassium (HBHK) (V/V) -0.05 0.05
HLDS Caliper (LCAL) (IN) 0 20			
HNGS Computed Gamma Ray (HCGR) (GAPI) 0 150			
Area1 From HCGR to HSGR			
HNGS Det.1 Gain Correction Factor (GCF1) 0.9 (----) 1.1			
HNGS Det.2 Gain Correction Factor (GCF2) 0.9 (----) 1.1			
HNGS Det.1 Resolution Degradation Factor (RDF1) 0 (----) 10			
HNGS Det.2 Resolution Degradation Factor (RDF2) 0 (----) 10			
HNGS Spectroscopy Gamma Ray (HSGR) (GAPI) 0 150			

PIP SUMMARY

Time Mark Every 60 S

Parameters

DLIS Name	Description	Value
BHS	DIT-E: Dual Induction - E Borehole Status	OPEN
GCSE	Generalized Caliper Selection	LCAL
BHS	APS-C: Accelerator-Porosity Tool Borehole Status	OPEN
GCSE	Generalized Caliper Selection	LCAL
	HNGS-BA: Hostile Natural Gamma Ray Sende	

BAR1	HNGS Detector 1 Barite Constant	1	
BAR2	HNGS Detector 2 Barite Constant	1	
BHK	HNGS Borehole Potassium Correction Concentration	0	
BHS	Borehole Status	OPEN	
CSD1	Inner Casing Outer Diameter	0	IN
CSD2	Outer Casing Outer Diameter	0	IN
CSW1	Inner Casing Weight	0	LB/F
CSW2	Outer Casing Weight	0	LB/F
DBCC	HNGS Barite Constant Correction Flag	NONE	
GCSE	Generalized Caliper Selection	LCAL	
H1P	HNGS Detector 1 Allow/Disallow In Processing	ALLOW	
H2P	HNGS Detector 2 Allow/Disallow In Processing	ALLOW	
HABK	HNGS Borehole Potassium Running Average	-0.00206142	
HALF	HNGS Alpha Filter Length	60	IN
HCRB	HNGS Apply Borehole Potassium Correction	NONE	
HMWM	Mud Weighting Material	NATU	
HNPE	HNGS Processing Enable	YES	
S1BI	HNGS Detector 1 Calibration Bismuth Count Rate	1.3	CPS
S2BI	HNGS Detector 2 Calibration Bismuth Count Rate	1.3	CPS
SGRC	HNGS Standard Gamma-Ray Correction Flag	YES	
TPOS	Tool Position	ECCE	
VBA1	HNGS Detector 1 Variable Barite Factor Running Average	2.19159	
VBA2	HNGS Detector 2 Variable Barite Factor Running Average	0.935656	
System and Miscellaneous			
BS	Bit Size	11.438	IN
DFD	Drilling Fluid Density	1.10	G/C3
DO	Depth Offset for Playback	0.0	M
PP	Playback Processing	NORMAL	

Format: HNGSYields Vertical Scale: 1:200 Graphics File Created: 23-Oct-2004 12:31

OP System Version: 12C0-301

MCM

DIT-E	12C0-301	GPIT-A/B	12C0-301
DTA-A	12C0-301	HLDS	12C0-301
NPLC-B	12C0-301	APS-C	12C0-301
HNGS-BA	12C0-301	DTC-H	12C0-301

Input DLIS Files

DEFAULT	PI_LDL_APS_NGS_040PUP	FN:62	PRODUCER	23-Oct-2004 12:27	3673.9 M	3575.5 M
---------	-----------------------	-------	----------	-------------------	----------	----------

Output DLIS Files

DEFAULT	PI_LDL_APS_NGS_043PUP	FN:70	PRODUCER	23-Oct-2004 12:31		
ACCELERATION	PI_LDL_APS_NGS_043PUP	FN:71	PRODUCER	23-Oct-2004 12:31		
REDUCED	PI_LDL_APS_NGS_043PUP	FN:72	PRODUCER	23-Oct-2004 12:31		

Company: Lamont Doherty Earth Observatory

Schlumberger

Well: 1305 C

Field:

Rig: Joides Resolution

Expedition: 303

Hostile Gamma Ray